

Greenbelt News Review

AN INDEPENDENT NEWSPAPER

Volume 44, Number 8 P. O. Box 68, Greenbelt, Maryland 20770 Thursday, January 8, 1981

City Council Grants Easement For Prudential's Storm Water

by Leta Mach

Good will characterized the discussion between city council and Prudential Insurance Company representatives during the last council session before the holidays. Council authorized city staff in consultation with the city solicitor to negotiate conditions informally accepted on December 15, for a stormwater easement across the city park on the Golden Triangle.

Council decided to grant an easement across Indian Springs Park conditional on the approval of The Washington Suburban Sanitary Commission (WSSC) and the State Highway Administration (SHA) agencies with current easements in that area. The easement will be used to construct a storm sewer line to direct site run-off from a proposed 133,000 square foot office building. This six-story building will be built by Prudential Insurance Company on lot 17 of the Golden Triangle, (between the city Indian Springs Park and Capitol Cadillac). Future plans call for an adjacent office building to the west and a multi-level parking garage between that building and the western end of Indian Springs Park.

Conditions

In principal, council and Prudential's representatives agreed that a ten foot easement would be

used on the eastern side of an existing WSSC easement. (This WSSC easement was once used for Greenbelt junior high sewage.) Other conditions include easements for two points of access to the city park, one on each end of the park, provision for picnic equipment (at least six tables) by Prudential, constructing a new concrete channel angled to the existing 48-inch pipe going under the Capital Beltway, and retaining a section of Prudential property to the east of the city park in its natural state.

Councilman Thomas White felt the triangular piece of Prudential land abutting the city park, Beltway and lot 17 would provide "a desirable buffer." Kathleen Moore, investment manager for Prudential Insurance Company, stated that there were no current plans for the 10,000 square foot plot. One alternative to the easement across the city park was running a pipe around the city park on this Prudential property. However, this alternative would result in more tree loss. Cost estimates are \$16,000 for storm drainage across the city park and \$21,000-\$22,000 around the park.

White continued to be concerned about the preservation of the affected Prudential plot. Mayor Gil Weidenfeld explained, "White is concerned that those trees may be taken down anyway in the future and that may sway the decision in going through your or our property." Moore responded, "I'm

sure we can work it out." She recommended that a covenant be made that the property always remain treed. As far as deeding the property to the city she did not foresee that possibility and added, "I have no authority to give up Prudential land."

More Landscaping?

The Advisory Planning Board has recommended that there be additional landscape buffering between the office building and Capitol Cadillac. Moore noted that Prudential already has more landscaping and open space than required. She would prefer to construct the building first before deciding whether more landscaping is necessary.

"Our interests coincide." Moore told council early in the evening. Reminding members that Prudential is a new owner with a new concept for the Golden Triangle, she stated that the company planned to be sole owner of the property for a long time. Accesses to the park and park facilities such as benches were two specific

See STORM WATER p. 3

What Goes On

Thurs., Jan. 7, 8 p.m. GHI Board Meeting, Hamilton Pl.

Tues., Jan. 13, 2 p.m. Meeting on Center Mall, Municipal Building
8 p.m. City Council - GHI Work Session Municipal Building

Council Decides On Post Office Co-op Basement A "Good Alternative"

by Leta Mach

City council began 1981 by giving the go-ahead to Postal Service plans to relocate in the lower level of the Co-op supermarket. Council voted 4 to 1 with councilman Richard Pilski registering a strong dissent. City staff was directed to work with the Postal Service in achieving the relocation and providing a parking enclosure for postal vehicles. Postal Service representative Richard Jozwiak told the *News Review* he expected the move would probably be made before another new year.

Jozwiak stated that the proposed location in the Co-op basement would provide 7900 square feet of net interior space. Representatives of the Postal Service and Greenbelt Cooperative, Inc. (GCI) have met, and now a lease has to be negotiated. GCI will need to remodel the basement to Postal Service specifications. Charles Gray, acting Greenbelt Postmaster (the former Postmaster, Emory Harman, retired in November) noted that the lease of the present post office just recently expired

and is on a month-to-month basis.

During the last half of 1980, the Postal Service presented this "compromise" plan to council, asking in particular for the use of a portion of city land for exclusive use of the post office. Secure parking for postal vehicles and more space for the postal facility were the major motives for the proposed move of the Greenbelt Post Office. At the January 5 meeting, council discussed the option of locating a fenced parking compound on the far side of the back parking lot across from the proposed facility. The compound would take 16 parking spaces plus five feet of land beyond the pavement so that the area would not block the driving lane. The city originally acquired 15 feet of land beyond the pavement for parking purposes explained City Manager James Giese. Beyond that is land acquired as parkland. Mayor Gil Weidenfeld wondered if parking the vehicles in two rows and using more unpaved land would have less impact. Giese thought an extra 10 feet might be enough. Such a plan would entail further grading and might take one tree. Jozwiak stated there was "no problem" with the idea. In its motion,

council directed that this avenue be explored. Another idea, to excavate the parking lot for a two level parking compound, was suggested by Ed James.

Two or three additional parking spaces would be lost for a loading platform beside the building. The platform would be at sidewalk level, and Geise felt it could accommodate pedestrians when not in use. After observing trucks near the Co-op Supermarket, Giese did not feel the maneuvering of postal trucks in the back parking lot would cause much problem. The space should be more than adequate, normally the back lot is nearly empty, and postal trucks come at odd times, he observed.

Many people realized that the improvement of the parking situation in the upper lot would be a side benefit of the plan. Many observed that the upper lot has parking problems during the daytime and on Friday evenings (banking hours). Under this proposal, 16 postal jeeps and about 20 postal employee vehicles could vacate spaces in the upper lot. "I expect it to improve the overall parking situation in the Center," said Giese.

See POST OFFICE p. 3

Step - by - Step Plan to Study Center Improvements Set Forth

by Hally Ahearn

On December 9 Center Mall business representatives and city officials met with Maryland-National Capital Park and Planning Commission urban design and marketing staff to review a work program outline for revitalization of the Greenbelt commercial area — better known as "the Center." The representatives included Albert Herling for the Cultural Arts Center, Stephen Weiner for Ben Franklin's, Joe Comproni and Ben Rosenzweig for the Credit Union, Robert Laurer for the Co-op, Leo Gerton for High's, Carolyn Esteridge for the library, and Lois Jamison for Suburban Trust Bank.

The outline proposes a study of the site and the market potential of the Center Shopping Mall in order to develop an overall plan for revitalization. During January, business representatives will be interviewed or complete a questionnaire to identify activities, merchandise or services offered, seasonal sales cycles and problems such as vandalism, shoplifting or parking space. City staff has agreed to provide information on square footage and a map of existing locations, streets, curbs, sidewalks, parking spaces and other physical features. MNCPPC staff will prepare a history of the center and its development and check the locations for code problems.

As these initial data-gathering tasks are completed, MNCPPC staff will begin analysis of market and design factors. The market analysis will include interviews with merchants, a statistical calculation of the market size based on square footage, sales volume and number of households served by the Center. If adequate funds (about \$400) can be provided by the city and/or businesses, a customer survey will be taken to evaluate what items and services are shopped for at the Center, what its attraction to shoppers is, what needs it does not fulfill. Another important survey will help to determine traffic patterns, travel times to the Center, the locations of competing stores or services.

MNCPPC design staff will look at the spatial definition of the Center: how much is open space, how much enclosed, how the buildings connect. This analysis of physical factors will also look at visual factors — views in or out, focal points, visual clutter — and at lighting, architectural styles and character, and plantings. The study will even show "microclimate," the sun, wind and humidity of the area.

Market Potential

A projection of market growth — growth in the number of households, population and income, growth in product or service sales to Center Mall customers — will help to determine the potential demand for more or different-commercial space in the Center in the future.

Many influences affect the viability of a shopping area: its appearance, convenience, the goods and services it has to offer, the strength of its competition, how well it is advertised, its overall atmosphere. After about 2½ months of study, MNCPPC hopes to draft a proposal for a course of action for revitalizing the Center Shopping Mall.

MNCPPC staff emphasized that the market and site analysis were "not two separate studies, but a unified effort." They will continue to work with the city and with center businesses to assess the opportunities for and constraints to rehabilitation of the commercial area. Finally, a completed revitalization plan will recommend economic and design choices. Then the Commission will help the Center seek funding for improvements. One MNCPP-

Retirement Party Honors Zoellner

Greenbelt Police Lt. Marshall ("Bud") Zoellner, who is retiring February 1 after 27 years of service with the Department, will be honored at a Retirement Dinner and Dance at the Greenbelt American Legion Post 136 on January 31. The affair, which is being co-hosted by the city of Greenbelt and the Greenbelt branch of the Fraternal Order of Police (F.O.P.), will be held from 7 p.m. to 1 a.m.

A limited number of tickets are available for sale at the Greenbelt Police Station

School Committee Meets On North End Closing

The School Study Committee will meet on the consolidation of North End and Center Schools on Sunday, Jan. 11 at 8 p.m. in the City Council Chamber. Everyone is urged to attend, especially North End parents, since the school is slated for closing in the fall of 1981.

METRO FARES UP FOR BUS AND RAIL

by Barbara Likowski

Higher transit fares are now in effect on all Metrorail and Metrobus routes. The standard boarding fee for Metrobus will be 60 cents in Maryland. Trips from Greenbelt to the District of Columbia will cost \$1.40 during rush hour, 85 cents other times. Elderly and handicapped passengers will pay 30 cents for trips within Maryland and 50 cents for trips between Maryland and D.C. Fare for the Downtowners Midibus will be increased to 25 cents.

It will now cost 60 cents for first three miles on Metrorail during rush hours and 125 cents a mile thereafter. (From New Carrollton to Metro Center the cost will be \$1.50.) Non-rush hour rail fares will be 60 cents for trips of any length. Elderly and handicapped passengers will pay half the peak period fare, with a maximum of 60 cents.

For the first time passengers will be able to receive a discount if they buy high-value fare cards or tokens in packages of 20. Five percent will be added to every farecard when \$10 or more is purchased on added to an existing card. There will be a 50 cent discount on packages of 20 tokens.

Rail-to-bus transfers in Maryland are 25 cents. Applicable zone changes will continue to require further payment.

The parking lot fee at New Carrollton station will continue to be \$1. Elsewhere parking fees will be \$1.25, including unmetered short term and kiss-and-ride-spaces. The monthly permit rate at New Carrollton will be \$30.

PC staffer said, "We want to be sensitive to the area's history and reflect the desires of the community."

The group will meet again on Tuesday, January 13 at 2 p.m.

Greenbelt News Review

AN INDEPENDENT NEWSPAPER
ALFRED M. SKOLNIK, PRESIDENT, 1959-1977
Editor: Mary Lou Williamson, 441-2662
News Editor: Elaine Skolnik, 474-6060
Copy Editors: Barbara Likowski, 474-8483
Virginia Beauchamp
STAFF

Hally Ahearn, Alan Amberg, Sandra Barnes, Suzanne Batra, Edith Beauchamp, Sheri Beck, Ann Bolt, Clint Boushell, Margaret Butler, Lee Chambers, Carl Choper, Corinne Comulada, Mavis Flecher, Joan Freeman, Jenny Geiger, Judy Goldstein, Marion Harrison, Rosemary Herrity, Peggy Hool, Janet James, Bernice Kastner, Sid Kastner, Martha Kaufman, Katherine Keene, Dorothy Lauber, Loretta Levesque, Larry Levine, Leta Mach, Elizabeth Maffay, Ray McCawley, Peggy Melley, Robert Mongelli, Diane Oberg, James O'Sullivan, Ruth Powell, Lois Schrom, Pearl Siegel, James Simon, Sandy Smith, Joanne Tucker, Jean Turkiewicz, Otilie Van Allen, June Webb, Mar-Lyn Weiner.
Business Manager: Betty Aggson; Circulation Manager: Earl Kepler, 345-2670; Spring-hill Lake Circulation: Barbara Clawson, 474-4541, News Review: 474-4131. Staff Photographer: J. Henson.

Published every Thursday by Greenbelt Cooperative Publishing Association, Inc.
BOARD OF DIRECTORS
Pres., Elaine Skolnik; Vice Pres., Sid Kastner; Sec., Barbara Likowski; Treas., Leta Mach; Virginia Beauchamp.
MAIL SUBSCRIPTIONS: \$15 per year. Advertising and news articles may be mailed (Box 68, Greenbelt); deposited in our box at the Twin Pines Office before 4:30 p.m. Tuesday; or delivered to the editorial office in the basement of 15 Parkway, (474-4131). The office is open Monday after 8 pm for display advertising; deadline is 10 pm. News articles and classified ads are accepted after 8 pm on Tuesday; deadline is 10 pm.

Volume 44, Number 8 Thursday, January 8, 1981

Meeting Standards

To the Editor:

The article in the December 4 News Review concerning the proposed construction of single family homes on Ridge Road was misleading and detrimental to the future of geodesic dome homes. It stated that "a sixth family who wanted to build a geodesic dome dropped out upon being informed that there would be architectural standards."

First, the sixth family did not drop out but was forced out by people supposedly interested in energy conservation.

Second, and most important, geodesic domes do meet the architectural standards set by Howard County, Ann Arundel County, Baltimore County, Baltimore City, and Prince Georges County! In fact, dome homes have met architectural standards and have been built throughout the United States. The dome has been proven to be approximately 30% more energy efficient than a conventional home.

As many people realized upon viewing a geodesic dome at the Design Show at the Armory in Washington, D.C. recently, geodesic domes meet architectural standards, are energy efficient, are aesthetically pleasing, and a viable alternative to other housing styles.

We hope that the Greenbelt News Review will see fit to set the record straight on the facts and standards of geodesic dome homes. We are also sincerely sorry that Greenbelt could not become a forerunner of energy conservation in this manner in Prince Georges County.

The Sixth Family,
Judy and Robert Goldberg-
Strassler

Louise M. Reidy

Louise M. Reidy, mother of Lori (Cresta M.) Beaird of Lakecrest Drive, passed away on December 19 after a long illness. She had been living at the Prince Georges County extended care facility for several years for treatment and care of multiple sclerosis. Mrs. Reidy was 84.

She leaves another child, Philip A. Reidy of Peabody, Massachusetts and his three children. Mrs. Reidy was buried in Lynn, Massachusetts.

In Greenbelt and nearby she leaves many loving grandchildren and great grandchildren: Glynnis, Philip and Lisa Beaird, Kathy Shumaker and daughter Amanda, Paula Jackson and daughters Candi and Cresta, and Jody Nesbitt.

Although Louise Reidy first contracted multiple sclerosis at the age of 22, she lived to be 84. She is remembered as one who maintained her high spirits, even when MS made living difficult for her.

CITY NOTES

Several members of the general and parks crew expressed their devotion to the city when they spent their New Year's Eve on the city snow plows. These men worked for approximately ten hours. Their efforts kept the streets and sidewalks clear.

Regular and special trash collections were very heavy during the holidays. Even though crews were on a holiday schedule, no problems developed. Paper collection on Wednesdays resumed this week.

The parks crew cleaned various parks and playgrounds. Roadside debris and Christmas trees were placed in the chipper. The crew also installed a gate at the Northway Field.

Recreation Review

Area Gyms Open

Several area schools offer open gym hours to the public. Listed below are the Greenbelt schools and hours: Greenbelt Junior High, Sundays, 1-5 p.m., and Roosevelt Senior High, Sundays, 6-10 p.m.

Golden Age Club

by Blanche Lee

Senior Citizen Travel Chairman for Prince Georges County, Charlie Steeg, has announced plans for a special free bus trip to Atlantic City at Harrah's, the latest Casino to open there. The trip is planned for February 5 and a bus will leave Greenbelt at 8 a.m., returning at 10 p.m. For reservation and further information call Travel Chairman Zelpha Parsons, 345-3904.

On Wednesday, February 25 there will be a trip to the Dinner Theatre at Burn Brae to see the play "I Do, I Do", a musical comedy dating back to the 20's and up to the present time. There will be two buses. Reservations should be made as soon as possible by calling Mrs. Parsons.

Members are reminded that annual dues for 1981 are now payable.

A Retirement Dinner & Dance honoring LT. MARSHALL "BUD" ZOELLNER

will be held on January 31, 1981

at the Greenbelt American Legion Post 136

from 7:00 p.m. to 1:00 a.m.

Tickets can be purchased at the Greenbelt Police Station

Tickets are \$10.00 per person.



Sponsored by
The City of Greenbelt
and the
Greenbelt F.O.P.

Safeway Opening Warms New Shoppers on Cold Day

by Virginia Beauchamp

Virtually all the action Sunday morning at the Greenway Shopping Center was at the Safeway store, which opened for business for the first time at 8 a.m. No, there had not been a big crowd that early on the frostiest morning of the winter. "But after church let out," said Susan, the clerk behind the counter in the gifts section, "suddenly it got pretty crowded." She had been doing a brisk business in watches she said.

The aisles were crowded when we got there, about 10:30 or so. Dark suited men with white boutonnières stood around prominently, greeting shoppers and welcoming them to the store. All the employees, in fact, wore carnations. Clerks behind the counters of the special sections, cashiers. Well, maybe not the stock boys helping customers outside with their bags. They were covered up with heavy coats against the cold so we couldn't tell. Although most of the employees had arrived at 7 or 7:30, they were all smiling and looking pleasant.

Who were they? Mostly experienced Safeway personnel transferred from other stores. You don't want greenhorns for a grand opening. Many will work here regularly; but one cashier we found momentarily unoccupied said she works new stores frequently. She is experienced with the scanner machines and often transfers in for two or three weeks until the regular employees get accustomed to the routine.

Susan said she had not applied for the new assignment. She had worked a long time at the New Carrollton store, and they just picked her out for the transfer. She was delighted, she said, since she lives in College Park and the new post would be closer for her.

Diane Smith, though, in the natural foods section, said she had applied. She is working toward a Master's degree in nutrition at

Howard University. She has been a Safeway cashier for three and a half years at a store in the District. When she went down with a friend who was applying for her first job with Safeway, Smith decided to fill out an application for a position she felt would have more career potential. When she got home, she said, they were already calling her.

Will she be doing any demonstrations, we asked. "That depends," she said. If there seems to be enough interest, the store may sell juicers and yogurt makers. Then she would demonstrate their use.

There were some familiar Greenbelt faces among the customers. Tony McCarthy was filling up with the week's grocery needs. Don Volk was looking things over. So was Claire Pilski. But most of the people wandering around seemed to come from elsewhere. One man said he was from Berwyn Heights. "A beautiful store," he said.

We bundled up against the cold. The car was far away. All the parking spaces in the entire section near the Safeway had been taken when we drove up. If the chill air kept any shoppers away, we couldn't have told.

Mishkan Torah News

A panel will discuss "ERA and Judaism" at the Mishkan Torah on Friday, January 9 at 8 p.m.

On Saturday, January 10, Carolyn Sanger, a founder of the Young Women's Coalition of the United Jewish Appeal Federation, will speak. Services start at 9:30 a.m.

Winter Hike in Park

There will be a winter hike in Greenbelt National Park on Saturday January 10 at 11 a.m. A park ranger will lead the non-interpretive hike, which begins at the Blueberry Trail in the campground area. For more information call 344-3943.

Bahá'í Faith

Greenbelt Community

P.O. Box 245

Greenbelt, Md.

474-4090 * 345-2918

ST. JOHN'S CHURCH Episcopal

Baltimore Blvd. at Powder Mill Rd., Beltsville

8:30 a.m. Holy Eucharist
10:30 a.m. Morning Prayer
10:30 a.m. Sunday School
Rev. John G. Bals, Rector
422-8057

GOD'S WORD HAS A MODERN MESSAGE FOR MODERN MAN.

DISCOVER THIS IN YOUR LIFE

GREENBELT BAPTIST CHURCH

474-4212 Crescent & Greenhill Roads

Bible Study for all ages (Sun.) 9:45 am
Worship Services 11:00 am & 7:00 pm
Mid-week Prayer service (Wed.) 8:00 pm

For bus transportation, call Church office
8:30 a.m.- 12:30 p.m. weekdays.

Greenbelt Community Church

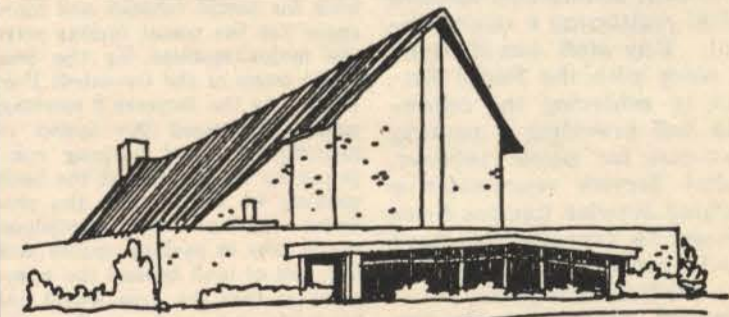


(United Church of Christ)
Hillside and Crescent Roads
Phone 474-6171 mornings

11 a.m. - Sunday Morning Worship and Church School

Nursery provided at
2B Hillside

Rev. Sherry Taylor and
Rev. Harry Taylor co-pastors



Holy Cross Lutheran Church

6905 Greenbelt Road

Worship Services: 8:30 and 11:15 a.m.

Sunday School: 9:50 a.m.

Weekday Nursery School: 9-11:30 a.m.

Edward H. Birner, Pastor

Phone 345-5111

POST OFFICE con't fr. p. 1

Citizen Support

Supporters of the Co-op basement proposal gave reasons reminiscent of past discussions about the post office. These included increasing the viability of the commercial center by keeping the post office in the Center and avoiding the creation of a new commercial area at the proposed Parkway site. Citizens who gave their views favored the Co-op site 2:1. Bill Wilkerson supported the location for keeping the post office in the Center, "the focal point of Greenbelt." He added that the Parkway site was too close to residences. "I feel this is an excellent alternative," said Evelyn Feller. She noted that individuals could walk to the post office from either side instead of using the steps, an objection raised by others. Harvey Geller, President of Twin Pines Savings and Loan, urged the city to expedite the move of the post office by approving the Co-op site. Already, he noted, Twin Pines and the Credit Union have talked with mall owner George Christacos about sharing the present postal location. Geller thought Suburban Trust would enlarge its quarters by taking over the Twin Pines spot.

The Parkway site lacked merit, explained Councilman Thomas White, "This site, as an alternative, is a good alternative," he added. He characterized the efforts of postal, city, county, and state officials in dealing with this problem in the last year as "very cooperative, and fruitful." Councilman Charles Schwan called the proposal a compromise and explained that planners had advised against extending the city commercial area. Councilman Richard Castaldi added "the best planning heads in the county feel the post office is vital in the Center." And, "Parkway is not good for the city," he said. Mayor Gil Weidenfeld agreed that the Co-op location was more advantageous.

Sandra Barnes, President of the Greenbelt Labor Day Festival Committee, stated that the Festival, "does not oppose the use of the lower lot for the post office if the upper lot is made available to the Festival." In steering committee discussions last fall, the committee favored a Festival move to the upper lot because of more shade trees, more flat surface, and greater distance from apartments as required by the county zoning inspector. If the post office and the Festival were both located in the back lot, she feared it would decrease the number of rides possible and thus decrease profits necessary to meet growing expenses.

Favors Parkway

Favoring the Parkway location, Pilski said, "I feel my voice . . . is a lonely one." He expressed his confidence in the viability of the center with or without the post office. "People want something new," he felt, to reflect the image of Greenbelt. "A reconditioned bargain-basement post office," was Pilski's description of the future Co-op site. Further, he predicted that the post office could soon vacate that location.

Opposed

Ben Hogensen felt the Co-op basement site was a "poor compromise." "This newest idea of a post office under the supermarket is intolerable," cried Janet James. She strenuously objected to the long flight of steps from the basement level up to the Center Mall and to the danger to pedestrians who might walk around the Co-op building past loading trucks in order to avoid the steps. She also predicted that this "under-the-supermarket deal" would not last. "Let us have our nice new post office at Parkway and Crescent!" she pleaded.

Ed James entertained both council and audience when he said he

Storm Water con't fr. p. 1

areas of agreement she noted. Councilman Richard Castaldi made note of the cooperation and said, "I'm glad you have the same feeling with respect to the park as we do."

Although the Prudential plans showed the easement to the west of the present WSSC easement, Moore said it could easily be changed to the east per the recommendation of City Manager James Giese. Giese had made that recommendation in his agenda notes because the trees on the east side were less significant. About six large trees would be lost. "Because there is already present cleared right-of-way and there are other large specimen trees adjacent to these, their loss will not greatly alter the existing appearance of the land," Giese felt. Using an existing stream channel for storm run-off, as was originally suggested, Giese felt, "would seriously impact upon this channel and the vegetation to either side, as the channel has several bends and several large specimen trees growing on the bank sides."

did not have any strong preference for one site over the other. Taking a position, he noted, would place himself either with his "political enemy, Miss James" or worse, with councilmen Schwan and White. Speaking as treasurer of GHI, he said that council lacked foresight. Over two years ago GHI members approved the sale of the Parkway land to the post office. He suggested that the land would eventually be sold to someone. "I'm willing to bet you 10:1 odds you're going to find a business up there eventually," he said. Council reminded him that the area was zoned residential and further, Council members felt it very unlikely that rezoning it commercial would be supported.

Ponding

City Engineer John Emler recommended that the new concrete swale be made to improve the flow by eliminating a right angle and thus helping to reduce storm water flooding. City staff noted that ponding during peak rainfalls would be for less than a one-hour period. This area of ponding is primarily in the existing stream and ditch channels and a cleared area for PEPCO easements. Assistant City Manager Dennis Pindak told council that there was "some evidence of past ponding." During a 2-year storm, at the pipe under the Beltway, the water would be 1.3 feet deep before development and 3.1 feet after development.

When property lines were staked, it was determined that an existing pathway from the cemetery to the WSSC right-of-way runs off city property about 15 feet in one area and 30 feet in another. For this reason and the local topography, Giese recommended two access points to the park. The beginning of the stream channel is also located a few feet on Prudential property. A condition of the preliminary plan was that access to the city property be given at the appropriate time. "We say this is the proper time," Councilman Richard Pilski noted. Compensation for the easement, the city solicitor noted, could be asked and not necessarily in cash, but perhaps in picnic facilities.

Council also received a report on the matter from the Park and Recreation Advisory Board. Their recommendation was against the proposed storm drainage system because "1) private developers should not be permitted to use city parkland anywhere within the city; and 2) Indian Springs Park should be preserved for its historical value."

Greenbelt Federal CREDIT UNION

at the Center

Share Drafts can do everything checks can do and more . . .



Open your Special Share Draft Account Today

Your advantages will include:

- No Service Charge
- Unused balance earns dividends
- Low cost overdraft loan option available on approved credit
- Automatic transfer for Credit Union loan payments
- Automatic TOTAL PAY DEPOSIT
- Up-to-the-minute information on your balance through our on-line-real-time data processing service.
- Immediate access to your Credit Union account.

Take advantage of our complete package of financial service at your Credit Union today!

Eligibility for Special Share Draft Account: All members in good standing with a minimum balance of \$25.00 in a regular share savings account in the Greenbelt Federal Credit Union. Savings insured to \$100,000 by National Credit Union Administration, A U.S. Government Agency.

Mon. thru Thurs.:

Phone: 474-5900

9:00 a.m. - 3:00 p.m.

Friday: 9:00 a.m. - 7 p.m.

121 Centerway (P.O. Box 157)

Greenbelt, Md. 20770

STAMPS B+E COINS
ANTIQUES
BUY • SELL • TRADE

Buying - Silver & Gold
Jewelry & Flatware

TOP PRICES
937-9119

11110 Balt. Blvd. Beltsville
Park & Shop Shopping Center

LONG & FOSTER
REALTORS®

FLASH—FLASH—DOUBLE FLASH!

TOUCH OF HEAVEN is the only way to describe the location of this fabulous 3 BR END BRICK home with LARGE paneled FAMILY ROOM. Located near center, library, and everything! It is complete with panoramic view through unsullied trees. From the large patio you will enjoy perfect privacy! If you have been waiting for the 3 BR END home of your dreams call Don or Lin McCoughey or Kathy Crawford at 441-9511 or 474-6348 BEFORE SOME ONE ELSE DOES.

HERE'S TO THE NEW YEAR and you will say this 4 BR 2 bath CAC home with den in College Park will more than meet your needs. Equipped with good appliances and near shopping. This could be your investment for the future! Mid-sixties on FHA/VA terms ask for Don/Lin or Kathy at 441-9511 or 474-6348.

OUT OF THIS SNOW and into this 3 BR 2 bath CAC rancher with garage in Belair. BIG ROOMS! Large ELL SHAPED LR/DR. Comb. The kitchen is so "table spaced" you can get a large pool table in it and still have room (in fact there is a pool table in the kit.) Come see for yourself! Mid-seventies! Ask for Don/Kathy or Lin at 441-9511 or 474-6348.

BACK TO SCHOOL! Tired of working for someone else? Here is your live-in (if you choose) educational center that has been in business for over ten years. This is a real opportunity to grab a partner (if you want) and take advantage of expanding a growing business. There is over 3500 square ft. of living space on a one acre Plus lot in Beltsville area. GREAT FINANCING Call Don/Kathy or Lin at 441-9511 or 474-6348.

I LOVE A FIREPLACE on a cold winter's night don't you? Here is a splendid 3 BR 1½ + bath CAC rambler with gorgeous back yard (makes Park and Planning reach for Aspiren). There is a real play house or you can just play house if you want to take advantage of a fabulous location near 95 and close to the beltway. Oh yes, there is a mystery carport Call Kathy/Lin or Don for details.

NEW CARROLLTON ANGEL Owner will help finance this 3 BR 2½ bath CAC Rambler with fireplace in the rec. rm. Call to get on the list and ask for Kathy/Don or Lin.

BRING BRUSHES REAP THOUSANDS You won't be able to resist this 3 BR+ (could be 6) 3 bath CAC, 4 fire places. Zoned heated FEDERAL Williamsburg Colonial, on a one acre plus lot. Located in Calvert County. Has an assumable GI loan or owner will hold second. Name your terms and take over this country estate. For other features Call Lin/Kathy or Don. 441-9511 or 474-6348.

GOING HOLLYWOOD? Mrs. Clean lives here! Seeing is believing and when you do you won't believe how nice this 3 BR col. will be for your family. Trees in yard give you the protection you have always wanted. Mid-60's. Call Kathy/Don or Lin tonight before someone else calls tomorrow! 441-9511 or 474-6348.

9094 BALTIMORE AVENUE
COLLEGE PARK

LONG AND FOSTER SOLD NEARLY THREE FOURTHS OF A BILLION DOLLARS WORTH OF REAL ESTATE IN THE WASHINGTON AREA. THERE MUST BE A REASON FOR THIS COMPANY BECOMING WASHINGTON'S LARGEST REALTOR IN TWELVE YEARS. Call 441-9511 TO FIND OUT WHY BUYERS AND SELLERS ARE COMING TO LONG AND FOSTER. WE KNOW A LOT ABOUT REAL ESTATE WE WOULD LIKE TO SHARE WITH YOU.

CALL 441-9511 or 474-6348
ASK FOR DON & LIN
MCCAUGHEY OR KATHY
CRAWFORD. WE'RE
PROFESSIONAL TEAMS
THAT CAN MOVE YOU FAST!

PRINCE GEORGES BOARD OF REALTORS

Equal Housing Opportunity

GHI Requests Further Commitment from City on Revenue Bond Financing of Rehab

by Bill Rowland

At its first meeting of the new year, the members of city council disposed of what they had expected to be the major business of the evening by approving parking arrangements for postal vehicles in connection with the proposed move of the Greenbelt Post Office to the Co-op grocery store basement (see separate story).

They then turned to a series of more routine-appearing items, only to find themselves confronting a last-minute request by Greenbelt Homes, Inc. that the city commit itself to issue revenue bonds for GHI rehabilitation in an amount \$3.1 million higher than the \$17,500,000 approved by council last October. This commitment would be made through a new ordinance and two new resolutions, now carrying a price tag of \$20,600,000. Moreover, the council was being asked to approve the new figure before GHI membership has been given its opportunity to pass judgment on the amount, at a membership meeting to be scheduled for sometime in February.

When council members asked for an explanation of the price increase, they were given a flurry of facts, figures, opinions, and wishes by Donald Volk, President of the GHI Board of Directors; by Kenneth Kopstein, GHI General Manager; and by representatives of three brokerage and law firms representing GHI. The Maryland Community Development Administration has given GHI a commitment for both the temporary and permanent financing of the rehabilitation program. Furthermore, MCDA has issued a bond anticipation note, and the money has been placed in a bank to be drawn upon after the mortgage agreement between GHI and MCDA has been executed. However, a commitment from the city is being sought in the event that MCDA is unable to issue the bonds, or if GHI finds it advantageous for the city rather than MCDA to issue the bonds.

The additional \$3.1 million cost results from an MCDA requirement for a 20 percent contingency fund because GHI is serving as its own contractor for the rehabilitation work; from MCDA fees for the financing, and from a decision to replace the cold-water lines in the frame homes. The GHI Bylaws were quoted to the council as showing that even if the council makes a commitment for the city, the commitment would not bind the city to issue bonds unless the GHI membership has approved the new dollar figure.

Despite the explanations and reassurances, members of council agreed they would need a work session with GHI management and its brokerage and legal representatives, as well as a representative of MCDA, in order to understand all the implications of this changed request. The work session is scheduled for Tuesday, January 13, at 8 p.m. With that much settled.

JOE MICHILINE FUND

The Jaycees report that contributions have started coming in to "The Joe Michiline Fund." Joe needs \$4,000 by March so he will be able to attend the "Deaf Olympics" to be held in Cologne, West Germany.

The Jaycees have asked that those concerned send contributions to The Joe Michiline Fund, P. O. Box 302, Greenbelt, Md. 20770, or contact Rick Barber at 474-5700 or Larry Noel at 474-9362. All contributions will be acknowledged.

the council heard the first reading of the ordinance and the two resolutions.

In other business at the January 5 meeting:

Bernard Kessler was appointed by the council to serve as Greenbelt's representative to the Council of Governments Environmental Resources Public Advisory Committee. Kessler replaces Rhea Cohen, who has resigned from the position.

Cerebral Palsy Month

Mayor Gil Weidenfeld proclaimed January as "United Cerebral Palsy Month" in Greenbelt. The proclamation was delivered to county councilman Roy Dabney, who is chairman of this year's "Weekend with the Stars" Telethon for Cerebral Palsy. The telethon will be shown on WTTG-TV Channel 5 on Sat., and Sun., Jan. 17 and 18.

Traffic Back-up

Councilman Thomas White questioned City Manager James Giese about improvements to the northbound off-ramp from the Baltimore-Washington Parkway. White noted that traffic is backing up on the Parkway back to the Beltway during evening rush hour. Giese said that the work now being done to the exit ramp will include widening the ramp to allow a splitting of exiting cars into those turning left on Greenbelt Road, and those turning right. This work is expected to be completed soon. Giese also reported that new traffic lights now in place and to be operational within the next few weeks will improve the flow of traffic. White asked Giese to find out whether the State Highway Administration thinks these two improvements will resolve the backup problem and to report back to council.

Mayor Weidenfeld noted that the county council will soon be making a decision crucial to the future of a Greenbelt Metrorail line. Weidenfeld expressed concern that County Councilman Frank Casula is not adequately representing Greenbelt in pushing for approval of the proposed alignment. Council agreed that a letter be sent to Casula urging his support for an alignment that

does not require further environmental impact studies and therefore does not threaten to deny future Metrorail service to Greenbelt.

Council members meet this week with Greenbelt's representatives to the Maryland General Assembly. The purpose of the annual meeting is to discuss the city's legislative program based on actions and positions that the city council has taken in the past. General topics included are state highways and transportation, state shared revenues, and other legislation.

The Motor Vehicle Administration reminds motorists that all offices will be open for normal business the first Saturday of each month and will be closed the Monday following each Saturday the offices are open. During July, August, and September however, the branch offices will be open regular Monday to Friday hours.

MVA headquarters in Glen Burnie will continue to adhere to regular Monday to Friday hours throughout the year as a convenience for motorists whose only day off is Monday.

Business hours, both at MVA branch offices, including the office at 5112 Berwyn Rd., College Park, and at Glen Burnie, are

TM Lecture at Library

A free public introductory lecture on the Transcendental Meditation (TM) Program will be given at 7:30 p.m. Tuesday, January 13, at the Greenbelt Library.

The lecture titled "Perfect Health and the Aging Process" will be given by Mark and Pauline Stickels, Greenbelt residents and TM teachers.

The lecture will begin with a film on TM and professional sports, followed by a discussion of benefits gained through the TM program.

For more information, call Mark or Pauline Stickels at 441-9398.

8:30 a.m. to 4:30 p.m.

No money.

At Prince George's Community College one credit hour costs ONLY \$17.50. A very affordable price. We are open seven days a week, hold classes between 7 am-11 pm, have six extension centers, in addition to our main campus in Largo.

We offer classes on TV and in a local newspaper. With these possibilities, and the low tuition, no money is no excuse.

Register now for Spring Semester. Classes begin January 17, 1981.

Register in person for Extension Centers credit courses and Special Programs courses: Weekend College, Telecredit Courses, Course by Newspaper at these locations:

- | | |
|--|--|
| Jan. 12 - Surrattsville S.H.
6:30 - 8:30 PM | Jan. 14 - Bowie S.H.
6:30 - 8:30 PM |
| Jan. 13 - Eleanor Roosevelt S.H.
6:30 - 8:30 PM | Jan. 14 - Andrews Air Force Base
(Military Personnel)
2:30 - 8:30 PM |
| Jan. 13 - Northwestern S.H.
6:30 - 8:30 PM | Jan. 15 - Andrews Air Force Base
(All Personnel)
2:30 - 5:30 PM |
| Jan. 14 - Laurel S.H.
6:30 - 8:30 PM | |

For additional information please call:

Admissions-322-0867 Extension Centers-322-0783
24-hour Information-322-0781 Special Programs-322-0785

Continuous registration at the Largo Campus from 9 AM - 7 PM.

Prince George's Community College

301 Largo Road, Largo, MD 20870

Greenway Liquors

GREENWAY SHOPPING CENTER GREENBELT ROAD AT THE BALTIMORE-WASHINGTON PARKWAY

GRAND OPENING Specials!

ALMADEN WINES
\$3.29 1.5 LITER

KING GEORGE \$8.50
SCOTCH 1.75 LITER

Gallo WINES
\$5.32 3 LITER

JIM BEAM \$9.75
1.75 LITER

Canadian Mac Naughton \$8.50
1.75 LITER

LOWENBRAU BEER
\$2.29 12-02 BOTTLES
6-PACK or \$9.89 CASE

BEEFEATER ENGLISH GIN
\$14.67 1.75 LITER

Kamchatka VODKA
\$5.99 1.75 LITER

SALE PRICES GOOD THRU 1-14-81 ... WE RESERVE THE RIGHT TO LIMIT QUANTITIES ON ALL LIQUOR AND WINE PURCHASES.

Charge ALL your purchases!

WE GLADLY ACCEPT • VISA • MASTERCARD • CHARGE • CREDIT CARDS.

7533 GREENBELT ROAD, GREENBELT, MD. 345-0598

"FOURPOSTER" AT UTOPIA THEATRE

by Paula Lipman

Greenbelt Cultural Arts Center and Greenbelt Players present "The Fourposter" by Jan de Hartog, directed by Angela Schreiber. Performances will be Friday, January 16, 23, 30 and Saturday Jan. 17, 24, 31 at 8:15 p.m., and Sunday Matinee February 1 at 2:30 p.m. at the Utopia Theatre.

The Fourposter, starring Craig Mooring, and Claire Auckenthaler is a tender, rollicking comedy that spans 35 years of the marriage of Agnes and Michael. At alternate performances Claudia Schreiber and Bruce Fleishman will play the roles.

The play is a human study of the ups and downs, the joys and sorrows of married life in all of its stages. Agnes faces an identity crisis when her two children leave home and the anger she feels when she suspects her husband Michael of infidelity. Michael resents seeing his wife in curlers and cold cream too often and is frustrated by the attention Agnes lavishes on their growing children.

Mooring and Auckenthaler, under the directorship of Angela Schreiber, have performed "The Fourposter" to enthusiastic audiences in nursing homes in the Washington area.

For information, call 474-7763 or 345-3516.

Our Neighbors

Condolences to the family of Louise M. Reidy, especially her grandchildren Glynnis, Phillip and Lisa Beard and daughter Lori Beard, all of Greenbelt.

Congratulations to Robert Darmody for his recent graduation from the University of Maryland, Agronomy Dept.

Best wishes for a quick recovery to Beth Kessler of 2-D Woodland Way who is recuperating at Johns Hopkins Hospital, Baltimore, after surgery on Jan. 6.

Wishing speedy mending to Dorothy Rothgeb, Greenbriar's Social Director, who recently broke her leg.

NOW Meeting Jan. 14

The Northern Prince Georges NOW chapter will hold its Wednesday, January 14 meeting in the Greenbelt Library at 7:30 p.m. "Goal Planning for the Chapter" will be the topic of the meeting. Possible projects and activities for 1981 will be discussed. The general public is welcome. For more information, call 794-7532.

Fun Runs

The first Fun Runs of the New Year will take place this Saturday, January 10, at 9 a.m. at Greenbelt Lake. The distances planned will be 1/2, 1, and 2 miles, with finishers receiving color-coded certificates. In case the Lake path is frozen or covered with snow, runners should meet in the parking lot. Come appropriately dressed. Snowshoes permitted. For further information, call Larry Noel at 474-9362.

Notice: GHI Owners All Vinyl Replacement Windows

Before you buy any Replacement Windows, Call us for Free Brochure

Go by and see our Sample House.

3C Gardenway Mr. Wood (or any of our 20 other sample houses)



A. T. George & Son Storm Window & Door Co.
6415 OLD BRANCH AVENUE-CAMP SPRINGS, MARYLAND 20831
TELEPHONE: 297-4705



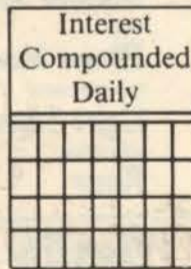
LOCATIONS FOR CHRISTMAS TREE DISPOSAL

Christmas trees may be dropped off at the following locations for pickup by the City beginning January 5, 1981.

- Playground opposite 73 court Ridge Road
- Corner of Research and Hillside Roads
- Playground at Plateau Place and Ridge Road
- Corner of Eastway and Crescent Roads
- Entrance to 21 court Ridge Road, (Across from Green Ridge House)
- Area adjacent to Candy Cane City
- Playground at junction of Crescent and Ridge Roads
- Playground at Ivy Lane and Lastner Lane
- Charlestowne Village & Charlestowne North - Adjacent to Lake Park service road
- University Square - Front of Swimming Pool
- Lakeside North - Near Swimming Pool
- Springhill Lake Community Building
- Greenbriar
 - Between Buildings: 7708 and 7710; 7728 and 7730 7826 and 7828 Hanover Parkway
 - Between Buildings: 8003 and 8009 Mandan Road
- Glen Oaks
 - Between Buildings: 7903 and 7905; 7509 and 7511 Mandan Road
- Windsor Green
 - Adjacent to playground on Canning Terrace
 - Court Entrances: 7248 - 7294 Mandan Road 7200 - 7246 Mandan Road
 - Entrance to Burkart Court
 - Entrance to Bird Lane

7% PASSBOOK

PLUS



AT

Twin Pines

Your Savings and Loan Association owned and operated by and for its members

Greenbelt Shopping Center
Greenbelt, MD 20770
301-474-6900

HOURS

Monday-Thursday ... 9-6
Friday 9-8
Saturday 9-12

MSSIC-insured savings to \$100,000 per account



* **NEW MONDAYS** *



ALL YOU CAN EAT LASAGNA

- ... **ALL THE SALAD** CRISP GREENS, TOMATO WEDGES, MUSHROOMS, DICED EGG, HAM, GRATED CHEDDAR, CHOICE OF FOUR DRESSINGS, CROUTONS, BACON BITS, ETC.
- ... **ALL THE LASAGNA** OUR DELICIOUS HOMEMADE LASAGNA DINNER WITH ALL THE CHEESES & SAUCES BLENDED FOR THAT FINE ITALIAN FLAVOR.
- ... **YOU CAN EAT \$3.99**
(Children under 10 - \$1.99)
- ... **EVERY MONDAY 5-10 P.M.**

Pizza Inn

BELTWAY PLAZA 345-4455



CO-OP

CONSUMER SUPERMARKETS

A DIVISION OF GREENBELT CO-OPERATIVE

PRICES EFFECTIVE JAN. 7, 1981 THRU JAN. 13, 1981

Not Responsible for Typographical Errors
QUANTITY RIGHTS RESERVED

We Gladly Accept U.S.D.A. FOOD STAMPS

BEEF BONELESS SHOULDER ROAST CHOICE \$1.98 LB	FRESH GROUND CHUCK \$1.78 LB	BEEF BONELESS CHUCK ROAST CHOICE \$1.88 LB	BEEF BONELESS CHUCK STEAK CHOICE \$1.98 LB
--	--	---	---

FRESH WHOLE PORK BUTT
\$1.28 LB

FRESH PORK STEAK \$1.38 LB

HOLLY FARMS CHICKEN BREAST
USDA A GRADE
\$1.25 LB

FIRST CUT BONE-IN BEEF CHUCK ROAST
USDA CHOICE
\$1.45 LB

BONE-IN CHUCK STEAK \$1.68 LB

FRESH PORK SHOULDER
Picnic 1.98[¢] Sliced \$1.08[¢] LB

ESSKAY-REG. OR HOT
Sausage 1-LB ROLL \$1.19

HOLLY FARMS
Chicken Bologna 1-LB VAC PAK 99[¢]

HOLLY FARMS
Chicken Franks 1-LB VAC PAK 99[¢]

ESSKAY
Bacon 1-LB VAC PAK \$1.58

FRESH FISH FILLETS
Cod 1-LB \$2.18 Flounder 1-LB \$2.78

FRESH AMERICAN LAMB

LAMB Shoulder Blade Chops \$2.29 LB

LAMB Round Bone Chops 1-LB \$2.49

FRESH Lamb Patties 1-LB \$1.79

CO-OP
Vegt. Soup 4 10 1/2-OZ CANS \$1

GREEN GIANT-Niblets, Cream & Shoopog
Corn or Peas 4 7-OZ CANS \$1

LIQUID LAUNDRY
Wisk Detergent 128-OZ JUG \$5.98

CO-OP TRASH
Can Liners 20-CT PKG \$2.18

CO-OP - Punch, Orange & Grape
Juice Drink 46-OZ CAN 58[¢]

HUNT'S
Tomato Sauce 5 8-OZ CANS \$1

BIG BONUS COUPON
GOOD JAN. 7 THRU JAN. 13, 1981

CHARMIN TOILET TISSUE
4-ROLL PKG WITHOUT COUPON 99[¢]

78[¢]

With This Coupon Limit One Per Family Used Only At

SPECIAL BONUS BUY!

WISE NACHO CHEESE TORTILLA CHIPS
BUY 1-6 1/2-OZ PKG AT REG PRICE

GET ONE PKG **FREE**

SPECIAL BONUS BUY!

CO-OP FARM FRESH MEDIUM EGGS
DOZ **69[¢]**

SPECIAL BONUS BUY!

DAWN DISH LIQUID
22-OZ BTL **98[¢]**

FROZEN FOODS

MINUTE MAID ORANGE JUICE
16-OZ CAN **98[¢]**

MRS. PAUL'S LT. BATTER
Fish N CHIPS OR FILLETS 7 1/4-OZ PKG \$1.09

SARA LEE
Pound Cake 10 1/4-OZ PKG \$1.27

CO-OP
Orange Juice 3 4-OZ CANS \$1

MEADOW GOLD
Viva Ice Milk HALF GAL \$1.29

DAIRY DEPARTMENT

CO-OP BUTTER
1-LB QTRS **\$1.78**

BEST BUYS FOR THE CONSUMER

Mayonnaise KRAFT QT JAR \$1.39	CO-OP CHICKEN Noodle Soup 10 1/2-OZ CAN 27 [¢]	BETTY CROCKER WHITE Cake Mix 18.5-OZ PKG 69 [¢]
CO-OP Apple Juice 64-OZ BTL \$1.39	CO-OP Elbow Macaroni 1-LB PKG 59 [¢]	COFFEE Maxwell House 1-LB CAN \$2.49
KOUNTY KIST Sweet Peas 17-OZ CAN 33 [¢]	STAR-KIST CHUNK Light Tuna 6 1/2-OZ CAN 99 [¢]	TOILET TISSUE - PRINTS Softweve 2-ROLL PKG 57 [¢]
LONG GRAIN River Rice 1-LB PKG 47 [¢]	GOLD MEDAL Flour 5-LB BAG 95 [¢]	CO-OP Liquid Bleach GAL JUG 69 [¢]

"Quality & Variety Is The Best Value"

BANANAS
GOLDEN RIPE **25[¢] LB**

STAYMAN Apples 3-LB BAG 78 [¢]	SWEET JUICY TANGERINES 175 SIZE 7 [¢] EA	RED RADISHES 6-OZ BAG 15 [¢]
CALIF. AVOCADOS EA 25 [¢]		YELLOW COOKING ONIONS LB 25 [¢]
MOIST POTTING SOIL 4-QT BAG 58 [¢]		WESTERN ANJOU PEARS LB 48 [¢]
		INDIAN RIVER Pink Or White GRAPEFRUIT 32 SIZE 33 [¢] EA

CO-OP YELLOW
American Slices 12-OZ PKG \$1.58

PROMISE
Margarine 1-LB PKG 95[¢]

BUTTERMILK or SWEETMILK
Pillsbury Biscuits 4-CT 4.75-OZ TUBES 98[¢]

KRAFT THIN NATURAL
Swiss Slices 8-OZ PKG \$1.48

CO-OP
Margarine 1-LB QTRS 39[¢]

HEALTH & BEAUTY AIDS

MINT OR REG.
Crest Toothpaste 7-OZ TUBE \$1.28

DEODORANT - REG. OR UNSCENTED
Secret Roll On 1.5-OZ SIZE \$1.48

HOUSEWARES & NON FOODS

5 HOLE - WIDE RULE
Filler Paper 200-CT PKG 99[¢]

100-CT WIREBOUND
Theme Book 99[¢]

CLASSIFIED

\$1.50 for a ten word minimum, 10c each additional word. Submit ads in writing, accompanied by cash payment to the News Review office at 15 Parkway before 10 p.m. of the Tuesday preceding publication, or to the News Review drop box in the Twin Pines Savings & Loan office before 4:30 p.m. Tuesday. There is no charge for listing items that are found. BOXED ADS: \$4.50 minimum for a 1 1/2 inch, 1 column box; \$1.50 each additional half inch.

ELLERS TYPEWRITER REPAIR - Electric, Standard and portable. Call 474-0594.

PIANO TUNING AND REPAIR - Expert and Reliable Piano Service to Greenbelt since 1960. Benjamin Berkofsky 474-6894.

PIANO LESSONS: Peabody Conservatory Graduate. Beginners - Advanced. 490-8208.

PAINTING - Interior, exterior, wallpapering, light carpentry, and ceramic tile. Good Greenbelt references, excellent workmanship. Frank Gomez, 474-3814.

Reasonable Rates All Work Guaranteed
Odd Jobs a Specialty

HOME & YARD IMPROVEMENT SERVICES

Everything for your home or yard - No job too small

Free estimates

Bob Wilhide 345-8368

UNIVERSAL CARPET CLEANING - Quality work at reasonable rates, steam cleaned. 474-8035. Free estimates.

TYPING DONE IN MY HOME - by expert typist, \$1 per page, 25c per carbon, 25c per card. \$1.25 per page for dissertations, thesis, or term papers. Call 345-9162 between 9 a.m. and 9 p.m.

SALE: Light grey bed & dresser, antique chest, small bookcase. 345-3346.

DISHWASHER - Excellent condition, compact/wheels. \$65 or offer. Call any time 474-8397.

WASHER - Sears heavy duty, excellent condition, \$200. Electric range \$80/offer. 345-7017.

INCOME TAX - done in your home - reasonable rates, call James Cantwell, CPA. 474-2784.

NEED SITTING to watch 5 yr. old from 2 to 6 p.m. Preferable with child attending North End School or responsible adult in 14 Court Hillside Vicinity. Call 441-1266.

RETIRED Citizens Wanted. We will pay you to share your knowledge and skills with others. CME. 279-9545.

ODD JOBS - Top - Quality plus Low prices equals CME 279-9545.

TUTORING / Instruction. Arts & Crafts. Academic, Music, Sports, much more. CME 279-9545.

J. Henson Photographics

- WEDDINGS -

- PORTRAITS -

- PORTFOLIOS -

ADVERTISING & COMMERCIAL PHOTOGRAPHY

J. Henson, Photographer

441-9231

Recreation Review

Registration will be held on Monday, January 12, 7-8:30 p.m. at the Greenbelt Youth Center; Tuesday, January 13, 7-8:30 p.m. at Springhill Lake Recreation Center and Wednesday, January 14, 3-5 p.m. at the Greenbelt Youth Center. For more information, call the Rec. Dept. Mon.-Friday 9-5 p.m., 474-6878.

James Lockard

Licensed Electrical Contractor

Specializing In Heavy-ups Rec Room Additions Emergency Service

552-1653

or

after 5 p.m.

552-9535

PART-TIME - Sun/Mon. Assistant to work in a community building in Greenbelt. General office duties with light typing and supervision of game room. For interview, call Dorothy Rothgeb, 441-1096. EOE.

HELP WANTED - Custodian/ Building Maintenance Person. Full-Time M-F to assist in the maintenance of municipal buildings. Starting salary \$4.38 an hour. Applications Available at City of Greenbelt, 25 Crescent Rd. 474-8052. EOE.

Need

Bathroom Remodeled?

CALL JOHN

345-7497

Specializing in Ceramic Tile

Beltway

Appliance Service

SAME DAY SERVICE

on

• Washers • Refrigerators
• Dryers • Freezers
• Ranges • Dishwashers

Discounts to Senior Citizens

Phone 345-5511

ALL WORK GUARANTEED

INSIDE-OUT IMPROVEMENTS

Painting Carpentry
Papering Decks
Tile Additions
Tub Kits Porches
Gutters Storm Windows
Sheds Fences

Paul Remenick 441-8699



For Insurance Call:

Don W. Taulelle
9200 Edmonston Rd.
Greenbelt, Md. 20770
474-5007

Like a good neighbor,
State Farm is there.
State Farm Insurance Co's.
Home Offices: Bloomington, Ill.

Police Blotter

Thefts from autos were reported from Breezewood Terrace, Hedgewood Drive, Julian Court, Springhill Drive, Greenhill Road and Westway Road.

Jewelry was stolen from an apartment on Cherrywood Terrace. Jewelry and coins were taken from an apartment on Mandan Road. An electric guitar was removed from a residence on Cherrywood Terrace and clothing and a TV were taken from a residence on Mandan Road. Cash was removed from a residence on Research Road and an attempted breaking and entering on Ridge Road was unsuccessful.

After effecting a traffic stop, a man became violent and assaulted Officer McGrath. He was placed under arrest, but again became violent and assaulted Cpl. Coombes.

Officer Sappington was assaulted by an adult female as he was responding to a call for an overdose. No serious injury was sustained.

Moving South Sale

Men's Clothing, most new, Leather Coat, Topcoat, Sweaters, etc. (All 40-42R) Dingo Style Leather Boots (9D) Ski Rack, Snow Shovels Pictures, Misc. Items. Jalousie Glass Porch Window 9'x5' w/screens \$10. 345-3028

RON BORGWARDT

10272 Baltimore Blvd.
College Park, Md. 20740
(on U.S. 1 at the Beltway)
474-8400

"See me for car, home, life, health and business insurance."



State Farm Insurance Companies
Home Offices: Bloomington, Illinois

SF-171

&

RESUMES

Frustrated and confusing are two terms frequently associated with applicants seeking Federal employment. Now a group of professional personnel specialists offer their services in completing Federal applications that obtain the highest possible ratings based on individual qualifications. We do the writing, the typing and the footwork.

We prepare RESUMES that bring out the best in you.

FOR INFORMATION CALL: 345-0324 (or 474-4418 after 6 p.m.)



F. Johnson of

In-Home TV Service

visits Greenbelt

4 days each week

- ✓ Always estimates within 10%
- ✓ Always calls before visiting
- ✓ Works some nights & weekends
- ✓ Top rated with consumer groups
- ✓ Prompt, fair - 18 yrs. experience - He listens!
- ✓ Most repairs done in your home

Master Charge, VISA accepted
CALL 588-4166 IN DAYTIMES
565-0001 Evenings & Weekends

Please ask us how we can help do-it-yourselfers over the phone

Wendy's Old Fashioned Hamburgers

NOW HIRING IN GREENWAY CENTER

All shifts 8-5 or 5-11, 12 Fri. & Sat.

\$ NOW TRAINING \$

474-7131

Eric "Rick" Barber, G.R.I.

Nyman Realty, Inc.

1979 Community Involvement Award

Prince George Board of Realtors

For ALL your REAL ESTATE NEEDS - call your community REALTOR Associate.

441-1010 474-5700

Voice Instruction

LEARN TO SING WELL IN A SHORT TIME

Frank Hirschel
474-6605

auditions free

Ceramic Tile

Bathrooms - Kitchens
Slate Foyers - Patios

Reasonable Rates

Call Bob Bell

336-3572

20 years experience
References in Greenbelt

SPECIAL

\$5.00 off on all Repair Jobs With This Ad

CALL 441-9116

Edgewood TV & Audio

Dependable Guaranteed Service

4932 EDGEWOOD RD.
COLLEGE PARK, MD. 20740

Licensed & Bonded

Typical Units Inside Measurements Appx.	Pella Windows Clad Casement	Aluminum Windows Vinyl Clad Casement	Weathershield Windows Vinyl Clad Casement
4/5x3/3	\$510 2032CC2		\$440.00 (C-21-2032)
4/5x3/11	\$560 2040CC2		\$475.00 (C-21-2040)
1/9x3/3	\$310 1632CC		\$275.00 (C-11-1632)
1/9x3/11	\$320 1640CC		\$285.00 (C-11-1640)
5/9x4/7	\$695 2848CC2		\$545.00 (C-21-2844)
2/10x3/3	\$340 2832CC		\$295.00 (C-11-2832)
2/10x3/11	\$360 2840CC		\$305.00 (C-11-2840)
5/9x4/7	\$820 16.48 20.48 1648CC		\$624.00 (C-31-16-20-1644)

T. E. WIMSATT CONSTRUCTION CO.

953-2456 Md. HIC - 1512

LEGAL CLINIC of DOUGLAS I. MALCOM

Divorce, Uncont.	200.00	FREE INITIAL CONSULTATION Beltway Plaza Shopping Center Greenbelt, Md. 20770 474-8808 Call for appointment
Incorporation	200.00	
Simple Will	35.00	
Bankruptcy	225.00	
Adoption	200.00	
Guardianship	100.00	
Auto Accident	25%	
Hourly Rate	\$ 35.00	
(Fees Exclude Costs)		

KENT'S CARPET CARE

WE CAN AFFORD TO DO THE JOB RIGHT

JANUARY CLEANING SPECIAL

10% OFF

OUR ALREADY LOW PRICES
SHAMPOO, STEAM, DUAL PROCESS

Call for Free Estimate 474-3529

Body Rhythms

presents a program of Aerobic Dance Exercise

Winter Session begins Week of January 12

CAPITAL PLAZA:	Mon., Wed., - 10:00 - 11:00 A.M. Mon., Wed., - 7:30 - 8:30 P.M. Tues., Thurs., - 6:15 - 7:15 P.M. 7:30 - 8:30 P.M.
GREENBELT:	Tues., Thurs., - 9:30 - 10:30 A.M. Mon., Wed., - 7:00 - 8:00 P.M. 8:00 - 9:00 P.M.

CARDIOVASCULAR CONDITIONING TO POPULAR MUSIC. RECAPTURE THAT FEELING OF WELL BEING. REGISTRATION AT FIRST CLASS.

For further information call 341-1199



Seven-year-old Terry Facchina of College Park poses with the giant stocking stuffed with toy animals and games which she won in the December 22 drawing at the Pizza Inn in Beltway Plaza. According to manager Tom Valley, Terry won from among 1200 entries, but had a little trouble walking away with her prize.

ADELPHI \$89,500

BRICK RAMBLER

Super home has everything to offer, 4 bedrooms & family room w/Franklin Stove. Call today for an appointment.

COLLEGE PARK \$112,500

250 AZALEAS

What a house!! Features 4 bedrooms, 2 fireplaces, complete eat-in kitchen & extra lot. Don't miss the chance to see this beauty.

KETTERING \$89,900

BRICK & STONE

Spacious colonial w/4 bedrooms, formal dining room & eat-in kitchen. Delightful in-ground heated pool.

CHEVERLY \$65,000

BRICK CAPE COD

Beautiful brick home with nice yard, 3 bedrooms, CAC & wooden sun deck. Priced to sell.

LANHAM \$72,500

SUPER RAMBLER

Fantastic 3 bedroom, Brick & Alum. rambler comes complete w/carpport and custom rec-room. Call today, you won't be disappointed!!

DID YOU KNOW???? - While Nyman Realty, Inc. does a great business here in Greenbelt, we also list and sell many properties outside of Greenbelt in Prince Georges County and neighboring counties. Call today and let us help you with all of your real estate needs, in or out of the Greenbelt area!!!

CALL 474-5700

NYMAN REALTY INC.

151 Centerway



**1981 WINTER LEISURE TIME ACTIVITIES
GREENBELT RECREATION DEPARTMENT**

474-6878

In-person registration, first come-first serve basis. ALL REGISTRANTS MAY SIGN UP AT EITHER CENTER FOR ALL CLASSES.

Monday, January 12th, 7-8:30 pm, Greenbelt Youth Center

Tuesday, January 13th, 7-8:30 pm, Springhill Lake Recreation Center

Wednesday, January 14th, 3-5 pm, Greenbelt Youth Center

Late registration on a space available basis only on Thursday, January 15th at the Youth Center Business Office. All late registrants will be charged a \$1.00 late fee. Make all checks payable to the CITY OF GREENBELT.

A 10% discount will be given to all senior citizens, 62 years old and over, registering for classes. Non-residents will be charged an additional 25% for all classes.

All classes begin the week of January 19, 1981. Should any class be cancelled due to snow, make-ups will be held at the end of the regular class schedule. Classes are held for the number of sessions or hours designated.

Refunds will be made if classes are cancelled by the Department due to insufficient registration. Other refunds will be made only according to provisions in City of Greenbelt Resolution No. 65, which also requires that refund requests be made in writing immediate for valid reasons.

LOCATION CODE: CS - Center Elementary School; SHLES - Springhill Lake Elementary School; SHLRC - Springhill Lake Recreation Center; YC - Youth Center.

BABYSITTING: Services provided for classes indicated by asterisks (**). Fee is 75c per child per class hour. Participants must register for entire class and fee is required at time of registration.

CHILDREN, TEEN & ADULT CLASSES

ACTIVITIES	LOCATION	DAY/TIME	AGE GROUP	FEE
				Non-Resident add 25%
Arts & Crafts	YC/SHLRC	Mon 3:30-4:30p	K-3 Grades	FREE - 8 weeks
	YC/SHLRC	Wed 3:30-4:30p	4-6 Grades	FREE - 8 weeks
Ballet - Adult	YC	Thu 6:00-7:00p	16 & over	\$15/8 sessions
Children 6 yrs. & over	YC	Sat 9:30-10:30 a	6 & over	\$12/8 sessions
Preschool	YC	Sat 10:30-11:30a	3-5 yrs.	\$12/8 sessions
Basketry - plus materials	SHLRC	Mon 7:00-8:30p	16 & over	\$15/8 sessions
Chucks 'n' Lassies	SHLRC	Sat 9:00-10:30a	6-10 yrs	FREE - 8 weeks
	YC	Sat 12:00n-1:30p	6-10 yrs.	FREE - 8 weeks
Clay Modeling	YC	Sat 9:30-10:30a	6-12 yrs	\$8/8 sessions
Creative Carousel	YC	Sat 10:30-11:30a	4-5 yrs.	\$5/8 sessions
	CS		SHL Elemen.	
CPR - Cardiopulmonary Resuscitation		Feb 10 & 11	18 & 19	7-10:30p
PRE-REGISTER		Mar 10 & 11	18 & 19	7-10:30p
CALL M-F, 9-5, 474-6878		Apr 7 & 8	22 & 23	7-10:30p
Floor Acrobatics	YC	Mon 4:00-5:00p	6 & over	\$8/8 sessions
Frame Making - plus materials	SHLRC	Wed 7:30-8:30p	16 & over	\$10/6 sessions
Gymnastics	SHLRC	Sat 9:00-10:00a	6-8 yrs	\$12/8 sessions
	SHLRC	Sat 10:00-11:00a	9-11 yrs	\$12/8 sessions
	SHLI	Sat 11:00-12:00n	12-16 yrs	\$12/8 sessions
Japanese Cooking - Classes held on January 13, 27, February 3, 10 & 17.	YC	Tue 10:00a-12:00n	Adults	\$18/5 sessions
Jazz Dance	YC	Sat 11:30-12:30p	9 & over	\$12/8 sessions
Karate	YC	Wed 4:30-5:30p	6-14 yrs.	\$12/10 sessions
	YC	Wed 8:00-9:00p	15 & over	\$12/10 sessions
Kid's Kitchen	YC	Tue 3:30-4:30p	3-6 yrs	\$5/4 sessions
	YC	Wed 3:30-4:30p	10-12 yrs.	\$5/4 sessions
	YC	Thu 3:30-4:30p	7-9 yrs.	\$5/4 sessions
Pottery - By Hand and Wheel - plus materials - UNLIMITED PRACTIC	YC	**Mon 10:00a-12:00n	Adults	\$32/10 sessions
Beg/Int	YC	Mon 7:30-9:30p	16 & over	\$32/10 sessions
Beg/Int	YC	Wed 7:30-9:30p	16 & over	\$32/10 sessions
Pre-School Playtime	YC/SHLRC	Thu 3:30-4:30p	3-6 yrs	FREE - 8 weeks
Roller Skating	CS	Wed 4:00-6:00p	K-3 Grades	50c w/own skates
	CS	Fri 4:00-6:00p	4-6 Grades	75c skate rental
	CS	Sun 1:00-3:00p	All Skate	
Slimnastics	SHLRC	**Tu/Th 9:15-10:15a	Adults	\$12.50/10 sessions
	YC	Tue 7:00-8:00p	16 & over	\$12.50/10 sessions
	YC	Wed 7:00-8:00p	16 & over	\$12.50/10 sessions
	YC	**Thu 10:00-11:00a	Adult	\$12.50/10 sess.
Stained Glass - plus materials	YC	Thu 7:00-8:30p	16 & over	\$12/6 sessions
Tap Dance	YC	Mon 5:00-6:00p	6 & over	\$12/8 sessions
Trampoline	YC	Mon 3:30-4:30p	6 & over	\$10/8 sessions
	SHLRC	Wed 3:30-4:30p	6 & over	\$10/8 sessions
Tumbling	YC	Fri 3:30-4:30p	6 & over	\$8/8 sessions
Volleyball - Competitive	CS	Mon 8:30-10:30p	16 & over	FREE - January
Leisure	CS	Wed 8:30-10:30p	16 & over	thru March
Yoga - Continuing	YC	Wed 6:00-7:00p	16 & over	\$15/10 sessions