

Greenbelt News Review

AN INDEPENDENT NEWSPAPER

Volume 44, Number 7 P. O. Box 68, Greenbelt, Maryland 20770 Thursday, January 1, 1981

Possibility For Post Office Move To Co-op Basement Is Under Study

by Bill Rowland

A new location for the Greenbelt Post Office will again be discussed by the city council when it meets on Monday, January 5, at 8 p.m. The council will give interested persons an opportunity to express their views during the meeting. Council will then consider taking final action during the evening.

The Postal Service has proposed that the post office move into the Co-op grocery store basement. This plan would require that a part of the basement be finished in accordance with Postal Service specifications and that a part of the city's back parking lot be fenced in for postal vehicles. Greenbelt Cooperative, Inc. (GCI), owner of the grocery store, is willing to improve and rent the needed basement space if a current cost study by its contractor shows that GCI will not lose money on the project.

The specific aspect of the plan under study by council is the parking compound which, as now proposed, would be a 24-foot by 160-foot fenced-in area along the wooded edge of the parking lot across from the Co-op building. To minimize disruption of traffic flow, the compound would extend five feet into city park land. There would be no loss of trees,

and no interference with Candy Cane City playground.

Perhaps no one really wants to see the post office leave the Center. However, because the present facility is too small, an eventual change is regarded as inevitable. Yet the Co-op basement location is not considered an ideal solution. Post office customers would have to negotiate a flight of outdoor steps or use a roundabout route to reach it from the mall. The movement and parking of mail trucks would remove some public parking spaces; it would interfere also with use of the parking lot for the Labor Day Festival.

On the other hand, most council members seem to agree that keeping the new post office as part of the Greenbelt Commercial Center is highly desirable, both as a convenience for postal patrons and as a generator of public "traffic" to benefit businesses in the center.

Only Councilman Richard Pilski has continued to oppose the Co-op basement location. He favors use of GHI-owned vacant land on Parkway, which GHI has offered to sell. That facility would be a new main post office, both a finance station and carrier annex. However, that proposal caused considerable citizen protest and was opposed by the majority of council.

Council has already obtained

advice from the city's Advisory Planning Board and from city Consulting Engineer John Emler regarding the positioning of the fenced parking compound. During December, council has also asked for comments from the Maryland-National Capital Park and Planning Commission, the Greenbelt Labor Day Festival Committee, and the city's Park and Recreation Advisory Board. These comments, together with those from citizens at the January 5 meeting, may enable council to reach its final decision about the parking compound during that meeting. If council approves the parking arrangement, then further decisions about a move of the post office to the Co-op basement would be worked out between GCI and the Postal Service.

Greenbelt Jaycees To Sponsor Michiline In "Deaf Olympics"

The Greenbelt Jaycees will sponsor and lead the fund-raising campaign for fellow Jaycee Joe Michiline in his effort to raise his expenses to the World Games for the Deaf. The "Deaf Olympics" will be held in Cologne, West Germany, in July, 1981. Unlike the U.S. Olympic Team, competitors in the Deaf Olympics do not receive any financial support from major corporations or the U.S. Olympic Committee. The Deaf Team supports itself through individual drives by each athlete in his or her hometown.

As reported in the *News Review* of December 25, Michiline earned his place on the U.S. team by winning the gold medal in the pole vault at the tryouts in Fulton, Missouri in June, 1980. He was one of 45 men and 26 women athletes selected for the team out of 250 top U.S. deaf athletes from all over the country who tried out for the team. Joe holds the U.S. deaf athlete record of 14 feet 2 1/4 inches in pole vaulting.

Joe, winner of several gold medals for pole vaulting, won his first gold medal at the Deaf Olympics in Belgrade, Yugoslavia in 1969. He did not try out for the U.S. team in 1973 but made the team in 1977. Even though he made the 1977 team he was unable to attend due to lack of money.

He has been working out at the University of Maryland, Catholic

University and Gallaudet College. Michiline is optimistic that he can reach his goal of 15 feet in the pole vault. If he can raise the money, he will be able to train for three weeks at North Carolina School for the Deaf at Morganton before he and his teammates leave for Cologne, where they will spend 12 days.

Expenses for each athlete amount to \$4,000 and must be raised by March. Contributions are tax deductible and should be made out to Joe Michiline Fund and sent to Greenbelt Jaycees, Post Office Box 302, Greenbelt, Md. 20770. All contributions will be acknowledged. The Jaycees have asked that those concerned send any suggestions for or offers to help in fund raising to Greenbelt Jaycees or contact Rick Barber at 474-5700 (day) or Larry Noel at 474-9362.

NEW SHOPPING CENTER TO OPEN FORMALLY - SUNDAY, JANUARY 4

by Elaine Skolnik

The Greenway Shopping Center will open officially on Sunday, January 4. On Sunday thirteen of the center's 37 stores will be open. They are Safeway, Greenway Liquors, Linens 'N Things, Radio Shack, The Vacuum Center, Delta Hosiery, Curiosity Shoppe, Kay-Bee Toy & Hobby Shop, Maternity Wearhouse Outlet, Zipper's, Greenway Interiors, Kemp Mill Records and Haircuttery. Some are already conducting business. Most of the remaining 24 stores are slated for completion by spring.

The 220,000 square-foot shopping center is located in the Greenbelt East subdivision on Greenbelt Road between Hanover Parkway and the Baltimore-Washington Parkway. The property was annexed by the city on July 5, 1979.

The single entrance to Greenway is from Greenbelt Road. In order to provide a second access from Hanover Parkway, Greenway developers, Western Development Corporation, have purchas-

ed the adjacent 5.1-acre Smith Ewing tract. The additional access road is expected to alleviate traffic congestion on Greenbelt Road. Planned for this property also are a Mexican restaurant, a full-service Exxon station and possibly a catalog store and a women's discount clothing store.

Located at the western end of the Greenbelt East tract is the 16-story, 192,000-square foot tower office building, "The Maryland Trade Center." Developers of this project are Coakley & Williams, who, unlike Western Development, did not favor annexation. At the time of annexation, the city estimated that the shopping center could eventually bring Greenbelt at least \$50,000 a year in tax revenues. This estimate was based on the property's being valued at 6 million dollars. (It did not account for inflation nor the increased property values since July 1979.)

Safeway

According to Safeway officials, the 60,044 square foot Greenway store is "the largest yet built by Safeway in the Eastern United States." There will be 43,460 square feet of sales space and 12 electronic-scanner checkstands.

Special departments include a 1,100 square-foot "Book Shoppe," a 900 square-foot natural food department, and a special international foods department carrying products from 15 countries. The store will also offer a complete pharmacy; a photo-gift center that will carry televisions, stereo equipment, cameras, jewelry, phonograph records and tapes; a full-service delicatessen-bakery; a flower and plant department; auto-care center; and a health and beauty aids department.

Safeway has installed a heat recovery system, whereby heat generated by the refrigeration system is used to heat the building and provide hot water.

The store will operate from 7 a.m. to 11 p.m. Monday through Saturday, with Sunday hours from 8 a.m. to 7 p.m.

Greenway Liquors

Among the owners of Greenway Liquors is Winfield Kelly, former county executive. The 3,300 square-foot store will carry a complete line of liquors and wines, as well as cheeses and a small New York-style delicatessen.

Dems Seek Candidates

The Prince Georges County Democratic Central Committee will hold a public hearing on a number of political appointments on Wednesday evening, January 7, at 7:30 p.m. in Courtroom No. 1 of the County Service Building, 5012 Rhode Island Avenue, Hyattsville.

The Committee is reviewing various boards and commissions to ascertain which appointments might be available to qualified citizens of Prince Georges County. It will make appropriate recommendations to Governor Hughes.

Interested persons should present resumes and make a statement to the Committee at this meeting. For further information, call the Committee at 552-1188.

City School Committee To Meet on North End

The Greenbelt School Study Committee will hold a public meeting on Sunday, January 11 concerning the proposal to close North End School and transfer the students to Center School. (Some Washington Heights Students would be transferred to John Carroll Elementary.)

Time and place will be announced in next week's *News Review*.

WHAT GOES ON

Mon., Jan. 5, 8 p.m. City Council Meeting, Municipal Building.

Tues., Jan. 6, 8 p.m. Baltimore Symphony, E. Roosevelt High School

Wed., Jan. 7, 7:30 p.m. Public Hearing on School Budget, E. Roosevelt High School

Baltimore Symphony Ticket Sales Booming

by Albert K. Herling

Greenbelters and other residents from surrounding communities are taking advantage of the appearance of the Baltimore Symphony Orchestra at the Eleanor Roosevelt High School on January 6 at 8 p.m. Advance ticket sales indicate a near-capacity audience.

A block of tickets has been set aside to enable those who did not have the opportunity to secure their tickets in advance to purchase them at the high school box office on the night of the concert.

The free lecture by Ronald Kaye is set for Friday evening, January 2, at 7:30 in the Council Chambers at the Municipal Building. Kaye, audio-visual librarian at the Hyattsville Branch of the Prince Georges Memorial Library System, will discuss the composers and the music which will be performed by the Baltimore Symphony Orchestra.

Immediately following the concert, a champagne reception will be held for Maestro Sergiu Commissiona, music director and conductor of the Baltimore Symphony at the Greenbriar Community Building. Reservations for the fund-raiser can still be made by calling 474-4621 and admission can be arranged at the reception site. The reception will serve as a fund raiser for the Greenbelt Cultural Arts Center. (See advertisement.)

The January 6 concert is the first concert in the "American Orchestras on Tour" program of the Bell System — not only in Maryland but in the nation.



AGENDA REGULAR MEETING OF CITY COUNCIL

Monday, Jan. 5, 1981
8 P.M.

- I. ORGANIZATION
 1. Call to Order
 2. Roll Call
 3. Meditation
 - Pledge of Allegiance to the Flag
 4. Minutes of Regular Council Meetings
 5. Additions to Agenda by Councilmen and Manager
- II. COMMUNICATIONS
 6. Petitions and Requests
 7. Administrative Reports
 8. Committee Reports
- III. OLD BUSINESS
 9. Resolution to Transfer Funds Within Departments - \$1,200 - Second Reading
 10. Post Office - Proposed Site Plan (Relocation to Lower Level of Co-op Food Store)
- IV. NEW BUSINESS
 11. Appointment to Council of Governments Environmental Resources Committee
 12. Legislative Program - 1981
 13. Request from Greenbelt Homes, Inc. - City Commitment to Issue Revenue Bonds
 14. Meetings
- V. MISCELLANEOUS

NOTE: This is a preliminary agenda - subject to change.

Greenbelt News Review

AN INDEPENDENT NEWSPAPER
 ALFRED M. SKOLNIK, PRESIDENT, 1959-1977
 Editor: Mary Lou Williamson, 441-2662
 News Editor: Elaine Skolnik, 474-6060
 Copy Editors: Barbara Likowski, 474-8483
 Virginia Beauchamp

STAFF
 Hally Ahearn, Alan Amberg, Sandra Barnes, Suzanne Batra, Edith Beauchamp, Sheri Beck, Ann Bolt, Clint Boushell, Margaret Butler, Lee Chambers, Carl Choper, Corinne Comulada, Mavis Flecher, Joan Freeman, Jenny Geiger, Judy Goldstein, Marion Harrison, Rosemary Herrity, Peggy Hool, Janet James, Bernice Kastner, Sid Kastner, Martha Kaufman, Katherine Keene, Dorothy Lauber, Loretta Levesque, Larry Levine, Leta Mach, Elizabeth Maffay, Ray McCawley, Peggy Melley, Robert Mongelli, Diane Oberg, James O'Sullivan, Ruth Powell, Lois Schrom, Pearl Siegel, James Simon, Sandy Smith, Joanne Tucker, Jean Turkiewicz, Otilie Van Allen, June Webb, Mar-Lyn Weiner.
Business Manager: Betty Aggson; **Circulation Manager:** Earl Kepler, 345-2670; **Springhill Lake Circulation:** Barbara Clawson, 474-4541. **News Review:** 474-4131. **Staff Photographer:** J. Henson.

Published every Thursday by Greenbelt Cooperative Publishing Association, Inc.
BOARD OF DIRECTORS
 Pres., Elaine Skolnik; Vice Pres., Sid Kastner; Sec., Barbara Likowski; Treas., Leta Mach; Virginia Beauchamp.
MAIL SUBSCRIPTIONS: \$15 per year. Advertising and news articles may be mailed (Box 68, Greenbelt); deposited in our box at the Twin Pines Office before 4:30 p.m. Tuesday; or delivered to the editorial office in the basement of 15 Parkway. (474-4131). The office is open Monday after 8 pm for display advertising; deadline is 10 pm. News articles and classified ads are accepted after 8 pm on Tuesday; deadline is 10 pm.

Volume 44, Number 7 Thursday, January 1, 1981

Green Light

The Postal Service proposal to relocate the Greenbelt Post Office in the basement of the Co-op store offers a viable compromise between the needs of the postal facility for additional space, including fenced-in parking for postal vehicles, and the desires of most people in the community to keep this vital service in the city center. The basement location is not a perfect solution. Some customers may have a problem negotiating the steps from the mall, or using a more round-about walkway. The conflicting needs of post office and Labor Day Festival are not yet resolved. Nevertheless, the current Postal Service proposal seems the best answer now available.

Citizens who have comments on the proposal — perhaps some solutions to the difficulties mentioned above — have been invited by council to air their views at the next council session on Monday.

After two years of intensive searching by postal authorities and city officials, we believe this compromise site is in the best interests of the community. We urge council to give the proposal a green light.

A New Year's Resolution

Greenbelt is a city of cooperatives. Nowhere perhaps in the United States are the skills of volunteer association so closely honed and so much appreciated. How that has come about must in part go back to the extraordinary beginning of this town. It did not grow in some kind of natural way around resources or arteries of transportation. It simply began. There was no history to cast an imprint on what the first residents might choose to do.

Most of us know the story of how early Greenbelters turned to each other to solve the problems they had to confront. Some citizens brought food for less mobile neighbors in that Depression year of 1937, selling it out of the trunks of cars. From this informal and unplanned beginning, grew the cooperative store that still serves this town. This newspaper, formed cooperatively, was one of the earliest ventures in volunteer action. Later, parents of young children banded together to exchange services in kind; they formed a babysitting pool. Other parents organized a cooperative nursery school, and others a kindergarten. Church congregations and a synagogue; youth activities; cultural groups like a chorus, orchestra, drama company, and band—all formed voluntarily. Members of each organization worked out their own forms of governance, their own agendas, their own reason for being.

With such a wealth of experience to draw upon, it is not surprising that when the U.S. Congress decided to sell off the federal interest in this town, residents of the Maryland community decided to form a new cooperative—the Greenbelt Veterans Housing Corporation, now Greenbelt Homes, Inc.—to purchase the homes they had come to love. Following this Greenbelt pattern, two other groups bought land cooperatively, purchases from which the Lakeside and Woodland Hills developments derived.

Greenbelters have not always agreed with each other, of course. One could not expect groups of people with varying backgrounds to join in harmony on every issue. But they learned how to respect one another's right to dissent; to negotiate, adjust and compromise with the opinions of others seen as equals, with equal claims to respect and consideration.

This is the tradition we would like to resurrect, because as we look back on 1980, we seem to see in our largest cooperative a new and unfortunate pattern emerging. Perhaps under the strains of the rehabilitation program, perhaps from fears arising from sky-rocketing inflation as an older population finds its financial situation more precarious, we see in the present GHI a turning away from those traditions of mutual respect that Greenbelters had learned to cherish. We have seen other members' motives attacked, their integrity questioned. We have seen long-time, dedicated employees cut off without warning

A REPLY

To the Editor:

Every masonry home had an individual monthly bill except the 135 units connected to the boiler plants. By eliminating the boilers these homes also will have their own water bills. It will be a more equitable charge for usage of water by the number of people occupying the unit and for additional appliances in use, instead of an average based on square ft. . . .

The whizkids wisely stopped the drain of the members cash and unauthorized bank loans for selected members before the house is sold. . . .

We need more NEW DIRECTION whizkids. Anyone willing and able should be most welcome and deserve the gratitude of the paying membership.

Martha Hutzler

NASA Honors Gre'nbelters

Three Greenbelt residents received recognition at the annual Joint NASA / Goddard Honor Awards Ceremony, held at the Goddard Space Flight Center on December 18.

Peter A. Bracken was awarded the NASA Exceptional Service Medal "in recognition of exceptional service while initiating and managing the development of advanced information extraction systems for remote sensing applications. Under his leadership, the Information Extraction Division has demonstrated the effectiveness of advanced data systems technology in support of NASA's Earth Observations Programs." Bracken has lived in Greenbelt since 1961.

James M. Williamson also received the NASA Exceptional Service Medal, "in recognition of his personal dedication to excellence of work and leadership in the development of methods, and sustained support to critical operations, thus insuring the collection of vital scientific data from the crippled HCMM and SAGE spacecraft." Williamson moved to Greenbelt in 1960.

Susan Roland, a Greenbelter for the past 11 years, was given a Goddard Exceptional Performance Award "for development of an innovative and meaningful system for recording and reporting . . . energy usage" at the Space Flight Center.

Original Play to be Read At Mishkan Torah Saturday

When two inspired men confront each other, a religious leader and a scientist, do their differences outweigh the traits they hold in common? And what happens when science finds a loophole in ancient law? These are some of the questions raised by "Forbidden Taste," a science-fiction yarn by Phyllis and Saul Oresky, together with the author, at Sabbath services on Saturday, January 3 at Mishkan Torah (JCC), Westway and Ridge. The service begins 9:30 a.m. and, if time permits, a discussion will follow the reading.

with impersonal coldness one would associate with large industrial corporations.

The end of the year is always a time for recapitulation - for looking back at what has been accomplished and for looking forward to what we wish to achieve. In this last year particularly, as portions of the city have been transformed to change permanently the surrounding physical landscape, it is important to recognize trends that are leading away from the original cooperative fabric of which Greenbelt has been woven. A present danger appears to lie in neglecting basic human considerations while centering attention only on economic and technical issues. This is not the direction in which our community started out. With the beginning of the new year, we hope the drift can be halted.

Meet Maestro Comissiona

Immediately after the Baltimore Symphony Concert a Champagne Reception will be held at the Greenbriar Community Building to give concert-goers an opportunity to meet Maestro Comissiona. The reception will begin at about 10:30 p.m. and is a fund-raiser for the Greenbelt Cultural Arts Center, Inc. Reservations for the reception may be made by calling 474-4621.

Price of admission is a \$15 contribution for individuals and \$25 for couples. Contributions are tax deductible.

ST. JOHN'S CHURCH
Episcopal
 Baltimore Blvd. at Powder Mill Rd., Beltsville
 8:30 a.m. Holy Eucharist
 10:30 a.m. Morning Prayer
 10:30 a.m. Sunday School
 Rev. John G. Bals, Rector
 422-8057

Mowatt Memorial
 United Methodist Church
 40 Ridge Rd. 474-9410
 Church School 9:30 - 10:30 a.m.
 Morning Worship 11:00 A.M.
 Rev. Ira C. Keperling, Pastor
 474-1924



Greenbelt Community Church
 (United Church of Christ)
 Hillside and Crescent Roads
 Phone 474-6171 mornings
 11 a.m. - Sunday Morning Worship and Church School
 Nursery provided at 2B Hillside
 Rev. Sherry Taylor and Rev. Harry Taylor co-pastors

GOD'S WORD HAS A MODERN MESSAGE FOR MODERN MAN.
 DISCOVER THIS IN YOUR LIFE
GREENBELT BAPTIST CHURCH
 474-4212 Crescent & Greenhill Roads
 Bible Study for all ages (Sun.) 9:45 am
 Worship Services 11:00 am & 7:00 pm
 Mid-week Prayer service (Wed.) 8:00 pm
 For bus transportation, call Church office
 8:30 a.m.- 12:30 p.m. weekdays.

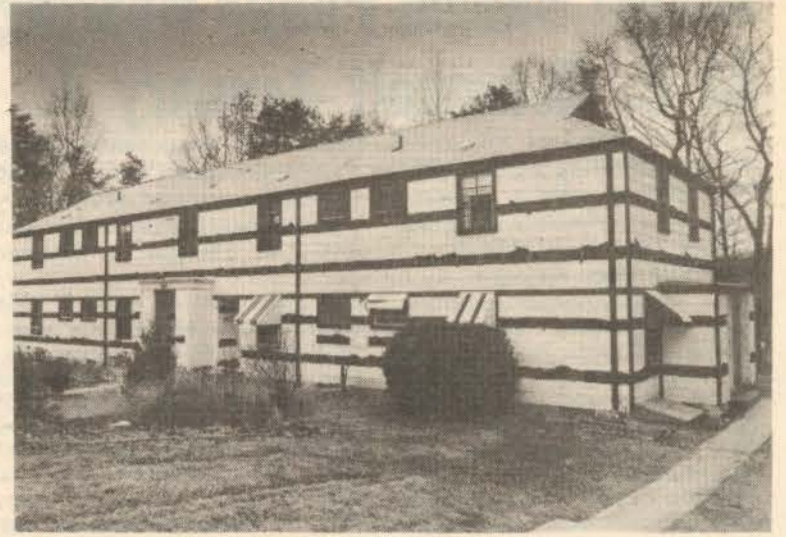
Holy Cross Lutheran Church
 6905 Greenbelt Road
 WORSHIP SERVICES: 8:30 & 11:15 a.m.
 Infant Nursery Provided
 ADULT BIBLE STUDY: 9:50 to 10:50 a.m.
 SUNDAY SCHOOL: 9:50 to 10:50 a.m.
 Ages 3 - 18, transportation provided
 NURSERY SCHOOL: 9:50 a.m.
 A new program offering a Christian Nursery school experience to children ages 3 - 5.
 SUPER TUESDAY 4:30 to 7:30 p.m.
 A program for ages 8 - 12 including choir, religious education, recreation, supper

Bahá'í Faith
 Greenbelt Community
 P.O. Box 245
 Greenbelt, Md.
 474-4090 * 345-2918



"BEFORE" and "DURING"
 ... All around the core of the city the frame houses of Greenbelt Homes are getting their stripes. After rows of asbestos shingles are removed, cellulose insulation is blown into the exterior walls and structures are checked for soundness. These "zebra houses" as they have been humorously dubbed will eventually receive new siding. GHI is still awaiting expected approval from the Maryland Historical Trust for use of vinyl-coated aluminium siding which would significantly alter the appearance of the houses.

— Photos by J. Henson



Our Neighbors

Excited eyes of anxious youngsters waiting for Santa Claus grew larger as they watched the Greenbelt Volunteer Fire truck arrive with Santa and his elves on Dec. 20. Over 150 children and parents were on hand to talk to Santa, exchange toys, watch Christmas movies and share refreshments.

More than 60 carolers also braved the bitter winter chill as they strolled the Center Mall, singing favorite holiday songs. The carolers proceeded to the Green Ridge House to serenade residents and receive hot chocolate for their cold bodies. After warming up, the carolers regrouped and sang songs throughout the City.

Condolences to Dorothy Davis on the recent death of her mother, Mary R. McIntyre. Mrs. McIntyre

Summer Jobs Available For College Students

The Maryland Department of Transportation will hire about 150 college students for 1981 summer jobs in highway maintenance, construction inspection, office work, and drafting.

To qualify, a student must be a Maryland resident who is returning to college in the fall. Also eligible had lived with the Davis family on Lakeside Dr. for five years.

Happy birthday to "big foot" Matthew Webb who will be 11 on January 5!

Congratulations to Joel Kastner on his graduation from the University of Maryland. Joel earlier attended Prince Georges Community College and the University of Colorado.

Seen about town this week were former Greenbelters Evelyn and Sid Barnett who left the 45 Court of Ridge several years ago for Southern California.

gible are high school seniors who will be age 18 by June 10 and expect to be starting college, and graduate students who will be continuing their studies next fall.

Students may apply for the jobs between January 2 and January 30 at the Maryland State Employment Service on Greenbelt Road next to Sir Walter Raleigh restaurant.

Students may apply for a job in their own county or in neighboring counties, but preference will be given to county residents for each county's jobs.

Applicants will be notified of their job status early in May, and interviewing for the various positions will begin as soon as possible thereafter.

Most of the job openings are in Baltimore, Baltimore County and Anne Arundel County, but some positions are available in every county.

CITY NOTES

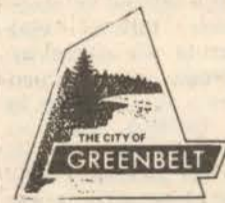
The general crew cleaned storm sewers and underpasses. They also installed new tires on the sandblaster. Potholes were patched on various streets and new traffic control signs installed on Hanover Parkway near the Greenway Cen-

ter.

The parks crew cleaned parks and playgrounds. Members of the general crew and parks crew began work at 4 a.m. on Dec. 23 to handle the icy road conditions. Some crew members came out late on the evening of Dec. 23 to salt several icy areas.

NOTICE OF MEETING

New Post Office Site Location



The City Council of Greenbelt, Maryland, will consider taking final action at its Regular Meeting of

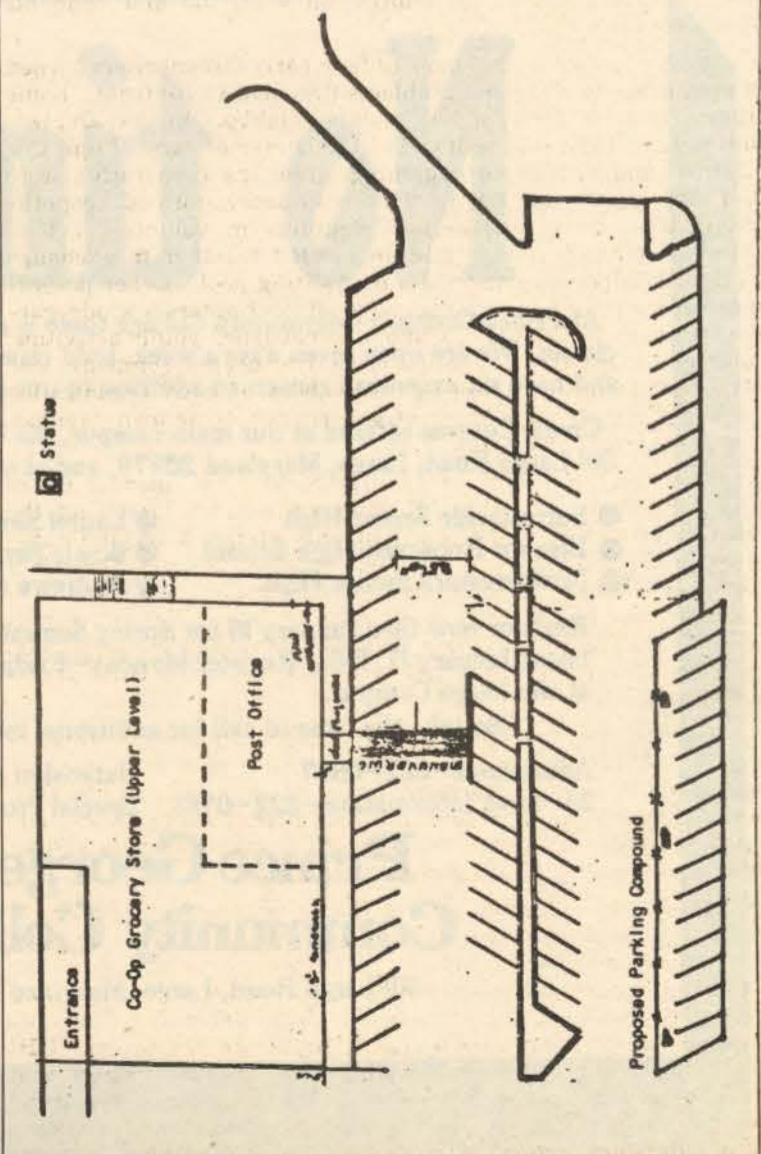
MONDAY, JANUARY 5, 1981 - 8:00 P.M.

Municipal Building, 25 Crescent Road

on a proposal of the United States Postal Service to relocate the Greenbelt Post Office under the Co-op Food Store with access from the rear parking lot of the Commercial Center, if the city makes available in the parking lot suitable space for an enclosed parking compound for postal vehicles. The location under consideration for the parking compound is the side of the rear parking lot opposite the Co-op Building (see map).

The City Council will give interested persons an opportunity to be heard.

Gudrun H. Mills, CMC
 City Clerk



Greenbelt Cultural Arts Center

presents the

Baltimore Symphony Orchestra
Sergiu Comissiona, Music Director

Tuesday, January 6, 1981 at 8 p.m.

at

Eleanor Roosevelt High School



PROGRAM

- CHABRIER Espana
- RAVEL Pavanne
- RAVEL Rapsodie Espagnole
- DVORÁK Symphony No. 8, G major. Op. 88



General Admission \$5; Senior Citizens, Students \$3
 Tickets available at City Finance Office 8:30-4:30.

or call 474-4621

School Budget Public Hearing At E. Roosevelt January 7.

Superintendent Edward J. Feeney has proposed a \$293.6 million operating budget for the Prince Georges County Public Schools next year, a 2.3 percent increase generated almost entirely by inflationary expenses. A public hearing on the budget will be held on Wednesday, January 7 at 7:30 p.m. at Eleanor Roosevelt High School.

The budget proposal would continue the planned reduction in staffing, with the elimination of 350 instructional and administrative positions totaling more than \$5.8 million in avoided costs. Since 1978, there have been staff cuts of more than 400 positions, including 50.5 administrative posts last year alone, in an effort to streamline and improve operations. These reductions far exceeded the positions removed on the basis of declining enrollment. Considering these extra cuts, plus another 57 staff positions (including 14 administrative jobs) cut beyond the enrollment criteria, the school system expects to avoid another \$7 million in expenses next year.

Despite other cost reduction measures, such as streamlining the bus fleet, closing surplus classroom space, installing fuel conservation equipment and improving refuse collection, the proposed budget would be an increase of \$6.5 million over the current year's budget of \$287.1 million.

Potential school closings, as well as the possible adjustments resulting from current negotiations between the Board of Education and the three employee unions, were not included in the superintendent's budget proposal.

Even though the proposal would impose systemwide reductions in staff and strict controls on existing expenditures in addition to those required during the last two years, the budget would still need increased funding support from the county government. The cause is the double problem of inflation

and governmental poverty. One example is the almost total abandonment of federal impact aid, which only last year provided more than \$7 million to the school system and this year provided essentially nothing. Another example is the increased payments required by the federal government for Social Security and the resulting limit the state placed on its share of the payments for local employees, two actions uncontrolled by the county government that added \$1 million to the local cost of operating the schools.

The problem of inflation is just as severe. In the areas of vehicle maintenance and operations, for example, gasoline prices are expected to increase 25 percent next year adding \$1.2 million in costs. Utilities, which include such things as heating oil, electricity, water and sewage, and telephone services, are seen as increasing by \$718,000 with building materials and contracts adding another \$287,000. Even the increased costs of health care, along with an additional number of unprecedented claims this year, will add an extra \$4.5 million in expected expenses.

Moreover, because the school system is "labor intensive," meaning that the single largest operation component is its workforce of 11,814 positions proposed for next year, the school system has a large responsibility for salaries. Despite the reduction of 350 staff positions and the overall salary reduction of \$2 million in the budget from this year to next, the proposed budget contains a \$5.3 million increase in salaries because of adjustments, annual in-

U. of Md. Offers Study Skills Lab January 15

The University of Maryland Reading and Study Skills Lab is offering individualized self-help programs for high school students preparing for college.

Special assistance is offered in reading comprehension, speed reading, study organization, time scheduling, and techniques of improved textbook comprehension. Training is also offered in preparing for and taking essay, objective and college entrance examinations; notetaking and listening skills; and grammar and composition skills. Vocabulary and spelling development are also offered.

Educational skills counselors will help students design appropriate individualized programs, evaluate progress, and determine

crements, professional advancement and terminal leave pay—not including expected changes resulting from a cost of living agreement with the unions—for employees remaining with the system. The only additional expenditures are a proposed increase in the daily pay rate for substitute teachers, full funding of high school athletic assistance and additional expenses for a larger number of handicapped students in non-public schools. And these changes total the relatively small amount of \$781,000.

new areas to be pursued. Students may start the independent work program at any time, and attend as often as they wish within a four-month period. Workshops begin Feb. 16. The program is open to 11th and 12th grade college-bound high

school students. The fee, which covers all expenses, entitles students to work at the Reading Lab as often as they need or want.

For more information on this program and other services offered by the laboratory, call 454-2935.



The American Dream is alive and well. And flourishing in Greenbelt.

Whenever you grasp the opportunity to improve your way of life, you're living the American Dream. At First Federal Savings and Loan Association of Annapolis, we're working hard to help make your dreams come true.

By encouraging thrift and by making home ownership possible, we're helping families in Greenbelt and in 21 other communities throughout Maryland enrich the quality of their lives. It's our way of keeping the American Dream alive.

First Federal Savings and Loan Association of Annapolis
Annapolis: Main Office; 2024 West Street, 266-6100
Greenbelt: Beltway Plaza Shopping Center, 474-6004

RON BORGWARDT

10212 Baltimore Blvd.
College Park, Md. 20740
(on U.S. 1 at the Beltway)
474-8400

"See me for car, home, life, health and business insurance"



State Farm Insurance Companies
Home Office: Bloomington, Illinois

No time.

At Prince George's Community College there is always time to attend classes. We are open seven days a week, hold classes between 7 am-11 pm, and have six extension centers in addition to our main campus in Largo.

Credit Courses offered at our main campus, the Largo Campus, 301 Largo Road, Largo, Maryland 20870, and at our extension centers:

- Surrattsville Senior High
- Eleanor Roosevelt High School
- Northwestern Senior High
- Laurel Senior High
- Bowie Senior High
- Andrews Air Force Base

Register now thru January 16 for Spring Semester Classes which begin January 17, 1981. Register Monday-Friday, 9 am-7 pm at the Largo Campus.

So take the time to call for additional information:

Admissions-322-0867 Extension Centers-322-0783
24-hour Information-322-0781 Special Programs-322-0785

Prince George's Community College

301 Largo Road, Largo, Maryland 20870



Holiday Greetings and Best Wishes for the New Year from

Twin Pines

Your Savings and Loan Association owned and operated by and for its members

Greenbelt Shopping Center
Greenbelt, MD 20770
301-474-6900

HOURS

Monday-Thursday ... 9-6
Friday 9-8
Saturday 9-12

MSSIC-insured savings to \$100,000 per account



Police Blotter

Several breaking and enterings to townhouses and apartments took place last week. Three entries were made via the hallway trap door to the attic in apartment buildings at 7830 Hanover Parkway and 7803 Mandan Road. Once inside the attic, the suspect(s) punched a hole in the ceiling and entered the apartment. TV, tape players and cameras were stolen. The department suggests that all public entrances into hallway attics be secured by a strong padlock.

A townhouse on Ora Glen Court was entered by forcing the patio door. Silverware and jewelry were among the items stolen. An attempt was made to enter another home on Ora Glen Court, but the suspect was unable to force the patio door. The department recommends that all patio type doors be secured by a bar in the track. Special locks, such as a "Charley" bar, can be purchased for this purpose.

As a result of a complaint, Pfc. Justin arrested a resident of Springhill Lake and charged him with forgery which involved a room-mate's checking account.

In separate traffic cases, Officer DiPietro charged one suspect with being in possession of a controlled dangerous substance (cocaine) and in another case, a juvenile with being in possession of fireworks.

Lt. Marshall H. Zoellner has announced that he plans to retire effective February 1, 1981. Lieutenant Zoellner will have completed 27 years of service.

The Greenbelt unit of the Fraternal Order of Police will honor Zoellner at a dinner on Saturday, January 31 at the American Legion.

Metrobus-Rail Fares Increase This Week

Transit fares will change in January, 1981. For the first time there will be a standard boarding charge of 60 cents on Metrobus and Metrorail, plus any applicable zone or mileage charges. Revenue from the higher fares is needed by the Washington Metropolitan Area Transit Authority to offset the rising cost of fuel, labor and equipment.

On Metrobus, new fares will be charged beginning Sunday, January 4. On Metrorail, off-peak fares will be charged from January 1 through January 4, with some passengers paying the new 60-cent fare and others the old 50-cent fare as each piece of fare collection equipment is readjusted. This means that non-rush hour fares will be charged on Metrorail all day on Friday, January 2 while the changeover is taking place.

Greenbelt Lake Drained, Cleaned Prepared for Restocking Fish

by Carl Choper

By spring, when the Bureau of Fisheries, Fish and Wildlife Administration restocks Greenbelt Lake with game fish, such as bass and catfish, the number of "trash fish" such as carp and goldfish should be minimal. In the past month the lake was drained, and as many of the fish as possible were caught. Game fish were transferred to other parts of the state, the "trash fish" were buried.

This was done, according to Assistant City Manager Dennis Piendak, because the Bureau of Fisheries had said they would not restock the lake unless steps were taken to eliminate the trash fish, which feed on the game fish. The

carp and goldfish are believed to come from the aquariums of residents who decide they no longer want their fish. Earlier this year it was possible to spot from the shore whole schools of such fish.

To drain the lake, the outflow pipe at the base of the dam was opened on Thursday, November 20. A fish trap was set up at the exit to that pipe to catch the fish which came through on the following Tuesday. On December 1, when the lake was drained as much as possible, the pipe was closed.

At that point, there was still some water and fish in the lake and chemical was applied to kill any remaining fish. The chemical, according to City Manager James K. Giese, is not harmful to humans, animals or waterfowl. All the same, it was necessary to ob-

tain a permit from the Maryland Department of Natural Resources to allow use of the chemical.

As a condition of the permit, no water was allowed to drain from the lake for 30 days after the application of the chemical, which was to be diluted and totally dissipated over that time period, according to Piendak. Those 30 days will end in early January.

Removal of all the dead fish currently in the lake, another requirement the city must meet, will then begin. Water will once again be released from the lake to allow access to the fish at the bottom. Officials hope all the fish can be gathered with nets. Otherwise they will have to be picked up.

Clean-up Begun

Since the water level was low, the city decided it would be a good time to give the lake a good general cleaning. With the help of the Jaycees, the Public Works Department removed much debris from the lake bottom. Piendak said he was surprised at how little debris there was more than five feet from the shore. He said there were only a couple of tires and trashcans beyond that point which were not removed because the ground around them was too soft. The city might decide to leave them there because they now provide spawning grounds for small fish.

The total cost of the job has been and will be minimal. Draining the lake consisted of little more than opening the outflow pipe. All the cleaning was and will be done by regular city crews or by volunteers. The only real expense that might have accrued would have been the renting of a crane. There had been some talk about using a crane to help in the cleaning process, but this was not done.

How long it will take for the lake to be refilled depends on the amount of precipitation there is. It has been over ten years since the lake was last drained, so nobody is sure how long it should take. When the lake will have to be drained again will depend on the type of fish in the lake, according to Piendak.

Assuming it gets cold enough, there will be ice skating on whatever water is in the lake this winter, as there was on Christmas day. Whenever ice forms, city employees will be checking it daily. (See regulations above.)



Unidentified youngster tries his hand with a new hockey stick earlier this week at Greenbelt Lake.



Tired skaters rest at the edge of partially refilled Greenbelt Lake. Lake will be lowered again before final refilling.

— Photos by J. Henson

Greenbelt Lake's Ice Skating Guidelines

The Greenbelt Lake is open for ice skating when weather conditions are favorable. In order to provide a wholesome, safe activity, the city has developed guidelines that should be followed. During cold weather, persons interested in ascertaining the conditions of the ice at the lake should call the Greenbelt Police Department, 474-7200. It is impossible to continually test ice thickness over all areas of the lake. Therefore, skating will always be at the risk of the participant. Recommended areas of skating are the shore lines and the bay around the peninsula. A green flag will be displayed on the bandstand flagpole to indicate SKATING AT YOUR OWN RISK. The lake area around the dam and spillway should be avoided, as open water is usually found in these areas. Parents should accompany young children. Skaters should also avoid gathering in groups on the ice.

The city's guide to ice conditions is as follows: **YOUNG OR BLACK ICE:** 2½ inches uniform; safe if cautious and no congregating. Four inches will support the weight of skaters. **SKATE AT YOUR OWN RISK. LAYERED OR WHITE ICE:** one foot of this kind will support the weight of skaters. **SKATE AT YOUR OWN RISK. OLD OR ROTTEN ICE:** thickness is under the above conditions. **ABSOLUTELY NO SKATING.**

The Recreation Department will attempt to provide assistance at the lake during week days from 4 p.m. until dark and on holidays, Saturdays and Sundays from 9 a.m. to dark. No skating will be allowed on the lake after dark. No fires will be allowed at the lake except those provided by the city due to the scarcity of firewood and danger from brush fires.

All skaters and parents should keep in mind the dangers involved in ice sports. A person who falls through the ice is in danger of drowning and freezing if he is not cared for immediately. Alertness to emergency and readiness to help other participants is stressed in such situations. A public telephone is located at the entrance to the Lake Park. For assistance, call 474-7200 for police; 911 for ambulance.

Happy New Year

from

GREENBELT FEDERAL CREDIT UNION

121 Centerway (P.O. Box 157)

Greenbelt, Md. 20770

STAMPS B+E COINS
ANTIQUES
BUY · SELL · TRADE

Buying - Silver & Gold
Jewelry & Flatware

TOP PRICES
937-9119

11110 Balt. Blvd. Beltsville
Park & Shop Shopping Center

PRICES
EFFECTIVE
DEC. 29, 1980
THRU
JAN. 6, 1981
QUANTITY RIGHTS RESERVED



CO-OP

CONSUMER SUPERMARKETS
A DIVISION OF
GREENBELT CO-OPERATIVE



BIG BONUS COUPON

GOOD DEC. 29 THRU JAN. 6, 1981

LIBBY SAUERKRAUT

27-OZ CAN **29¢**
WITHOUT COUPON 45¢

With This Coupon Limit One Per Family Good Only At



**FAMILY PACK
CUBE STEAK**

CHOICE **\$2.98**
LB

**BONELESS
RUMP ROAST**

CHOICE **\$2.29**
LB

**CENTER CUT RIB
PORK CHOPS**

\$1.88
LB
Loin & Thin Chops **\$1.98**

**COUNTRY STYLE
SPARE RIBS**

\$1.48
LB

**Hawaiian Punch
RED, ORANGE OR GRAPE**

46-OZ CAN **58¢**

SPECIAL BONUS BUY!

**BONELESS JUNIOR
STEAMSHIP
ROUND**
8 to 20-LB AVG.

CHOICE **\$1.98**
LB

**RIB HALF PORK
LOIN ROAST**

\$1.38
LB
LOIN HALF **\$1.48**

**FRESH REGULAR
GROUND
BEEF**

\$1.49
LB

SPECIAL BONUS BUY!

**MUSSELMANS
APPLESAUCE**
REGULAR OR NATURAL

50-OZ JAR **\$1.08**

SPECIAL BONUS BUY!

**CO-OP ECONOMY
NAPKINS**
ASST. OR WHITE

2 **\$1**
140-CT PKGS

COMBINATION (3 Loin End - 3 Rib End - 3 Center) **\$1.38**
Pork Loin Chops
USDA GRADE A
Perdue Oven Stuffers **88¢**
CO-OP OR
Esskay Sliced Bacon **\$1.58**
FROZEN LOBSTER OR
Shrimp Egg Rolls **4 3-OZ \$1**
WHOLE OR HALF
Semi-Boneless Hams **\$1.38**

We will slice your Cooked Boneless Beef Roast Free of Charge. A full line of Imported & Domestic Cheeses are always available at CO-OP.

WHOLE BONELESS
New York Strips **\$3.58**
WHOLE
Boneless Del Monicos **\$4.15**
WHOLE
Boneless Tenderloin **\$4.18**

ILE DE FRANCE
Brie Cheese **\$3.48**
HERKIMER
Cheese Nut Log **\$3.88**
VERMONT BLACK
Cheddar Cheese **\$3.18**



Pork & Beans 4 16-OZ CANS \$1

Light Tuna 6 1/2-OZ CAN 85¢

**BEST BUYS
FOR THE CONSUMER**

SUNSHINE
Hi Ho Crackers 16-OZ PKG 78¢

15¢ OFF
Crisco Oil 24-OZ BTL \$1.19

RED & WHITE
Soda ASST. FLAVORS 28-OZ BTL 38¢

CO-OP
Catsup 32-OZ BTL 78¢

NABISCO
Ritz Crackers 12-OZ PKG 98¢

7 FARMS 8-OZ JAR
Maraschino Cherries 72¢

RED & WHITE
Stuffed Olives 3 1/4-OZ JAR 93¢

CO-OP
Margarine 1-LB OTS 39¢

CO-OP
Orange Juice 3 6-OZ CANS \$1

HOUSEWARES & NON FOODS

G.E. - 60-75-100 WATT
Soft White Bulbs PKG OF 4 \$1.79

C OR D CELL
Duracell Batteries PKG OF 2 \$1.59

FROZEN FOODS

**TOTINO'S
CHEESE PIZZA**

\$1.48
18-OZ PKG

BANQUET
Fried Chicken 2-LB PKG \$2.58

MEAT & SHRIMP, SHRIMP OR CHICKEN
Chun King Egg Rolls 6-OZ PKG 78¢

CO-OP
Tiny Peas 10-OZ PKG 48¢

HOLLAND DUTCH
Ice Cream HALF GAL \$1.25

SEALTEST ICE CREAM
BUY ONE HALF GAL AT REG. PRICE
GET ONE QT SEALTEST VALENCIA
ORANGE JUICE - FREE

HEALTH & BEAUTY AIDS

ASST. OR PEPPERMINT
Tums PKG OF 3 68¢

FOR COLDS
Comtrex Tablets 50-CT BTL \$3.39

DAIRY DEPARTMENT

**MINUTE MAID
ORANGE JUICE**

99¢
HALF GAL

CO-OP YELLOW
American Singles 24-OZ PKG \$2.99

CO-OP EXTRA SHARP
Cheddar Chunks 10-OZ PKG \$1.68

ASST. VARIETIES
Sealtest Dips 8-OZ CUP 65¢

KRAFT SOFT PHILA.
Cream Cheese 8-OZ SIZE 95¢

Mayonnaise KRAFT 9T JAR \$1.39

CO-OP
Apple Juice 64-OZ BTL \$1.39

KOUNTY KIST
Sweet Peas 17-OZ CAN 33¢

LONG GRAIN
River Rice 1-LB PKG 47¢

CO-OP CHICKEN
Noodle Soup 10 1/2-OZ CAN 27¢

CO-OP
Elbow Macaroni 1-LB PKG 59¢

STAR-KIST CHUNK
Light Tuna 6 1/2-OZ CAN 99¢

GOLD MEDAL
Flour 5-LB BAG 95¢

BETTY CROCKER WHITE
Cake Mix 18.5-OZ PKG 69¢

COFFEE
Maxwell House 1-LB CAN \$2.49

TOILET TISSUE - PRINTS
Softweve 2-ROLL PKG 57¢

CO-OP
Liquid Bleach GAL JUG 69¢



"Quality & Variety Is The Best Value"

LETTUCE 38¢
WESTERN ICEBERG Head

GREEN
Cabbage LB 18¢

PURPLE TOP
TURNIPS LB 33¢

FRESH
APPLE CIDER GAL JUG \$1.98

**RED RIPE
MEDIUM
TOMATOES 38¢**
LB

ROME
APPLES 3-LB BAG 88¢

CALIF.
LEMONS 1A 10¢

FLORIDA
CARROTS 1-LB BAG 33¢

TASTY
GARLIC PK 25¢



GREENBELT
121 CENTERWAY ROAD
GREENBELT, MD.

WESTMINSTER
RT. 140 & ENGLER RD.
WESTMINSTER, MD.

ROCKVILLE
205 N. WASH. ST.
ROCKVILLE, MD.

FAIRLINGTON
1603 N. QUAKER LANE
ALEXANDRIA, VA.

KENSINGTON
3715 UNIVERSITY BLVD.
KENSINGTON, MD.

SEVERNA PARK
41 BALTIMORE ANNAPOLIS RD.
SEVERNA PARK, MD.

CLASSIFIED

\$1.50 for a ten word minimum, 10c each additional word. Submit ads in writing, accompanied by cash payment to the **News Review** office at 15 Parkway before 10 p.m. of the Tuesday preceding publication, or to the **News Review** drop box in the Twin Pines Savings & Loan office before 4:30 p.m. Tuesday. There is no charge for listing items that are found. **BOXED ADS:** \$4.50 minimum for a 1½ inch, 1 column box; \$1.50 each additional half inch.

PIANO TUNING AND REPAIR - Expert and Reliable Piano Service to Greenbelt since 1960. Benjamin Berkofsky 474-6894.

P/T and F/T positions available. Free training and good company benefits. Call Mr. Greg Shannon at 474-5700.

PIANO LESSONS: Peabody Conservatory Graduate. Beginners - Advanced. 490-8208.

INTERIOR & EXTERIOR PAINTING - General repairs, plaster patching, wall covering, drywall. Don Williams 474-4719.

PAINTING - Interior, exterior, wallpapering, light carpentry, and ceramic tile. Good Greenbelt references, excellent workmanship. Frank Gomez, 474-3814.

UNIVERSAL CARPET CLEANING - Quality work at reasonable rates, steam cleaned. 474-8035. Free estimates.

PAINTING

Painting	Carpentry
Papering	Decks
Tile	Additions
Tub Kits	Porches
Gutters	Storm Windows

Paul Remenick 441-8699

ACCOUNTING, Bookkeeping, tax service. Call James Cantwell CPA. 474-2784.

EXPERIENCED BOOKKEEPER will assist you with financial records and tax preparation. Very reasonable rates. 345-7923.

Photography

By
J.

PORTRAITS
ADVERTISING
INSURANCE
J. Henson, Photographer
441-9231

ELLERS TYPEWRITER REPAIR - Electric, Standard and portable. Call 474-0594.

STATE FARM



For Insurance Call:
Don W. Taulelle
9200 Edmonston Rd.
Greenbelt, Md. 20770
474-5007
Like a good neighbor,
State Farm is there.
State Farm Insurance Co's.
Home Offices: Bloomington, Ill.

TYPING DONE IN MY HOME— by expert typist, \$1 per page, 25c per carbon, 25c per card. \$1.25 per page for dissertations, thesis, or term papers. Call 345-9162 between 9 a.m. and 9 p.m.

PROFESSIONAL PIANIST AVAILABLE - Lessons all levels (jazz - improvisation specialty) combos for weddings or parties. 345-7975.

TEXAS REFINERY CORP. offers **PLENTY OF MONEY** plus cash bonuses, fringe benefits to mature individual in Greenbelt area. Regardless of experience, write A. T. Sears, Pres., Texas Refinery Corp., Box 711, Fort Worth, Texas 76101.

Voice Instruction

LEARN TO SING WELL
IN A SHORT TIME

Frank Hirschel
474-6605

auditions free

1973 CHEVY TRUCK "AS IS". **MAKE OFFER. CALL 345-2112 BETWEEN 7 a.m. & 5 p.m.**

DATSUN 510, '69, FOR SALE - as is. Excellent 4-speed transmission; excel. tires, rebuilt radiator. \$200. or best offer. Call 577-4127 or 864-8844. (No calls sundown Fri. thru sundown Satu.)

Beltway Appliance Service

SAME DAY SERVICE

- on
- Washers • Refrigerators
 - Dryers • Freezers
 - Ranges • Dishwashers

Discounts to Senior Citizens
Phone 345-5511
ALL WORK GUARANTEED

WANTED - Woman to help handicapped woman three or four hours daily. Please call 345-1828.

CHILDCARE - Mature person to care for 3 month old in our home. References. 474-5128.

Need

Bathroom Remodeled?

CALL **JOHN**
345-7497

Specializing in Ceramic Tile

TO D.D. FROM H.L. - You are a vision of beauty that permeates my heart and soul. Happy New Year. My Love, my Life. You are the sun that brightens my days. The moon and stars that light my path in the darkness. Your beauty abounds within me. I will love you eternally.

SF-171 & RESUMES

Frustrated and confusing are two terms frequently associated with applicants seeking Federal employment. Now a group of professional personnel specialists offer their services in completing Federal applications that obtain the highest possible ratings based on individual qualifications. We do the writing, the typing and the footwork.

We prepare **RESUMES** that bring out the best in you.

FOR INFORMATION CALL: 345-0324 (or 474-4418 after 6 p.m.)

Recreation Review

Men's Basketball

Six area teams will begin competition in Greenbelt's 1981 Men's 'A' League Basketball Sunday, Jan. 11. All games will be played at the SHLRC beginning at 6 p.m. on Sunday afternoons. Spectators are welcome to come out and cheer for their favorite team. No admission will be charged.

Boys' and Girls' Club Action

Next week begins the basketball season for the Boys' and Girls' Club. Games will be played at both the SHLRC and the Youth Center on Tuesday and Thursday evenings. Everyone is invited to watch the games and encourage the young competitors.

Winter Recreation Class Registration

Plan now to register for the Rec. Department's winter classes. Registration will be held on Monday, Jan. 12, 7-8:30 p.m. at the Youth Center; Tuesday, Jan. 13, 7-8:30 p.m. at SHLRC and Wednesday, Jan. 14, 3-5 p.m. at the Youth Center. Don't miss out on the many interesting classes offered for the winter. For more information call the Rec. Department Business Office, Monday-Friday, 9-5 p.m., 474-6878.

James Lockard

Licensed Electrical Contractor

Specializing In
Heavy-ups

Rec Room Additions
Emergency Service

552-1653

or

after 5 p.m.

552-9535

Reasonable All Work Rates Guaranteed

Odd Jobs a Specialty

HOME & YARD IMPROVEMENT SERVICES

Everything for your home or yard - No job too small

Free estimates

Bob Wilhide 345-8368

H.L. - Our path led upward. We reached a high plateau as a new year emerges. Our relationship a beautiful meadow filled with quiet joy. I am content in its knowledge. May 1981 bring you total happiness. D.D.

SALE: Partial set golf clubs with nice leather bag. \$25. Bed frame \$5. 478-8677.



F. Johnson of In-Home TV Service

visits Greenbelt
4 days each week

- ✓ Always estimates within 10%
- ✓ Always calls before visiting
- ✓ Works some nights & weekends
- ✓ Top rated with consumer groups
- ✓ Prompt, fair - 18 yrs. experience - He listens!
- ✓ Most repairs done in your home

Master Charge, VISA accepted
CALL 588-4166 IN DAYTIMES
565-0001 Evenings & Weekends

Please ask us how we can help do-it-yourselfers over the phone

WSSC Repairs Sanitary Sewer at Center Mall

WSSC has advised that the sanitary sewer main running through the Center Mall has a leak which has resulted in sewage entering the storm sewer in this area. On Dec. 22, as a temporary measure, WSSC personnel dug into the grass area behind the statue and temporarily connected the storm sewer into the sanitary sewer. This temporary connection was made so as not to disrupt the Commercial Center during the pre-Christmas shopping and mailing period.

On Dec. 29, permanent repairs

to the sanitary line began. These should be completed in one or two days, following which the entire line will undergo the Insituform process. By televising the line, the break has been pretty much located as being in the center of the Mall. Unfortunately, this is also underneath a section of Bomanite WSSC notes that the firm has suspended operations for the winter season. Thus a temporary asphalt patch will be placed over the excavation until the Bomanite can be replaced in the spring.

SPECIAL

\$5.00 off on all

Repair Jobs
With This Ad

CALL 441-9116

Edgewood TV & Audio

Dependable Guaranteed Service

4932 EDGEWOOD RD.
COLLEGE PARK, MD. 20740

Licensed & Bonded

LEGAL CLINIC of DOUGLAS I. MALCOM

Divorce, Uncont.	200.00
Incorporation	200.00
Simple Will	35.00
Bankruptcy	225.00
Adoption	200.00
Guardianship	100.00
Auto Accident	25%
Hourly Rate	\$ 35.00

(Fees Exclude Costs)

FREE INITIAL CONSULTATION

Beltway Plaza
Shopping Center
Greenbelt, Md. 20770

474-8808

Call for appointment

Typical Units Inside Measurements Appx.	Pella Windows Aluminum Clad Casement	Weathershield Windows Vinyl Clad Casement
4/5x3/3	\$510 2032CC2	\$440.00 (C-21-2032)
4/5x3/11	\$560 2040CC2	\$475.00 (C-21-2040)
1/9x3/3	\$310 1632CC	\$275.00 (C-11-1632)
1/9x3/11	\$320 1640CC	\$285.00 (C-11-1640)
5/9x4/7	\$695 2848CC2	\$545.00 (C-21-2844)
2/10x3/3	\$340 2832CC	\$295.00 (C-11-2832)
2/10x3/11	\$360 2840CC	\$305.00 (C-11-2840)
5/9x4/7	\$820 16.48 20.48 1648CC	\$624.00 (C-31-16-20-1644)

T. E. WIMSATT CONSTRUCTION CO.

953-2456 Md. HIC - 1512

Notice:

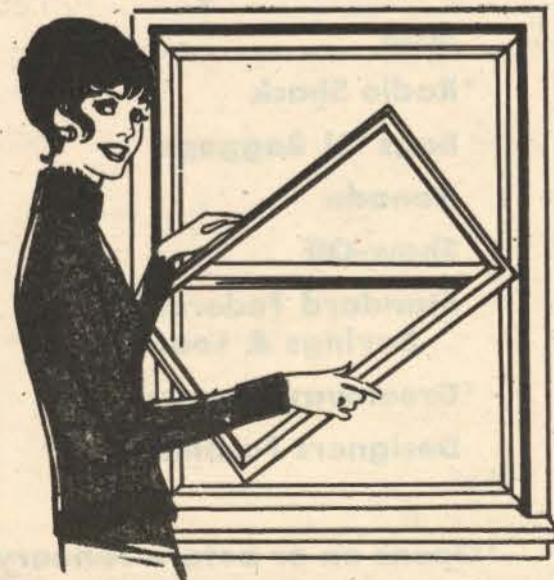
GHI Owners

All Vinyl Replacement Windows

Before you buy any Replacement Windows,
Call us for Free Brochure

Go by and see our Sample House.

3C Gardenway Mr. Wood
(or any of our 20 other sample houses)



A. T. George & Son Storm Window & Door Co.
6415 OLD BRANCH AVENUE-CAMP SPRINGS, MARYLAND 20881
TELEPHONE: 297-4705



Grand Opening

Sunday, January 4

at the

Greenway Shopping Center

Greenbelt Road between Hanover Parkway
& The Baltimore-Washington Parkway

We wish to thank the community for its support and cooperation during planning and building of this exciting new shopping area.

Our special thanks are extended to Mayor Gil Weidenfeld, Mayor Pro Tem Richard Pilski and Councilmen Thomas White, Richard Castaldi and Charles Schwan, to City Manager James Giese and Assistant City Manager Dennis Piendak and to all those who helped to bring this project to completion.

We are very pleased to have become members of the Greenbelt community.

Western Development Corporation

***Safeway**

Crown Books

Denny's

***Linens 'N Things**

Scan

***Radio Shack**

Bags 'N Baggage

Xanadu

Show-Off

**Standard Federal
Savings & Loan**

***Greenway Liquors**

Designers Fashion

Lane Shops

Godfather's Pizza

Off the Rax

***Delta Hosiery**

***The Vacuum Center**

**First National Bank of
Maryland**

Holiday SPA

Dart Home Center

Trak Auto

***Curiosity Shoppe**

Wendy's

***Kay-Bee Toy & Hobby
Shop**

Shoetown

The Great Factory Store

***Maternity Wearhouse
Outlet**

The Slimmery

***Zipper's**

Greenway Cleaners

***Kemp Mill Records**

Real Rich Ice Cream

***Greenway Interiors**

***Haircuttery**

Hanover Trails

La-Z-Boy

Kinney Shoe Store

***Opens on or before January 4.**