

# Greenbelt News Review

AN INDEPENDENT NEWSPAPER

Volume 43, Number 9

GREENBELT, MARYLAND

Thursday, January 17, 1980

## Post Office Willing to Re-examine Issues, Seek Compromise Solution

by Leta Mach

Although a solution to the post office problem was not reached at Monday's work session, city and post office officials, pleased with the positive atmosphere during the evening, felt a solution would be reached soon. In response to a postal request for as much input as possible, the city promised to give the postal service information about possible sites for a postal facility and the location of future commercial development in the city which could affect the postal service's decision.

"I'm glad to have you here," Councilman Richard Castaldi told the new Maryland/D.C. District Manager Gene Fleming, explaining that he felt more comfortable about the evening's negotiations than he had at previous meetings. Congresswoman Gladys Spellman explained that she felt the same about the meeting. Fleming noted that the postal service shared the city's concerns because their employees and customers were part of the community. "We both have a problem; we have to face up to it and come away with a solution," he said.

### Timetable

According to the original timetable, the project should already have been finished. Thus, Fleming would like to finish quickly, taking 30 days to examine the alternatives and after that do a cost analysis of each. Fleming asked to have the city's concerns "so when we make a decision, we can defend it." City Manager James Giese expressed his willingness to meet with post office real estate people to ex-

amine the sites for a facility.

Outlining postal concerns and alternatives, Fleming expressed willingness to reexamine the issue and look for compromise. The post office is concerned about its employees, the lack of space in the Greenbelt facility, the lack of secured parking for postal vehicles and the energy crisis. Fleming cautioned that the post office still has to be cost effective. In that regard, he was especially concerned about the million square feet of new office space that is to be built in Greenbelt. The new offices may change the center of mail density and the new facility should be as close to that center as possible to keep the total carrier mileage to a minimum.

Fleming listed the alternatives as: (1) one facility, (2) a finance station (customer services) in the center with a new carrier annex (distribution facility) elsewhere, and (3) contract station in the center with a carrier annex elsewhere.

With a finance station, the postal service would run the operation with a full range of customer services in the center. However, the facility at 2,109 square feet would be smaller than the present quarters. The carrier annex in this option would be an industrial facility for handling mail and with no customer services. Under a contract station, a private business in the center would offer customer services (stamps, mailing of packages, money orders) and could include lock/boxes. However, parcels or registered letters could not be picked up. A new carrier annex would include both customer services and distribution facilities.

Councilman Charles Schwan

did not believe that any center business had the space for a contract station. Mayor Gil Weidenfeld wondered how long such a station would last. Fleming agreed that there were problems with a contract station. Although its permanence could not be guaranteed, they had worked in some places, he said.

Schwan and Mayor Gil Weidenfeld did not feel a single facility was possible in the core of Greenbelt. Candidly, Schwan added that there was not much possibility of locating a new facility at Candy Cane City or the lower parking lot. Castaldi felt that the "one facility concept cannot be located in the core without a detrimental effect on traffic." He added that he would prefer to have the big facility on a main thoroughfare.

Citizen Bill Wilkerson explained that he had quickly found eight or nine vacant sites at intersections from Glendale to the railroad tracks west of the city. In response to Wilkerson's question, Fleming said he was not sure how important closeness to the railroad tracks would be for the post office. The area behind the American Legion has been previously mentioned as a possible site. However, Fleming said that there were problems with its access road. A location by a traffic light would be

See POST OFFICE page 3, col. 1

### WHAT GOES ON

Mon., Jan. 21, 7:30 p.m. Citizens Advisory Committee on Busing, E. Roosevelt High School.

8 p.m. City Council Meeting, Municipal Building

Thurs., Jan. 24, 8 p.m. GHI Board Meeting, Hamilton Pl.

### Programming

The Greenbelt Players performance will be just one of a number of events to be held at the theatre. Regularly scheduled programming featuring films, coffeehouses, concerts and speakers will commence the last weekend of January. Those interested in assisting in the operation of these events or in participating in any of the coffeehouses as performers are urged to call Dave Benson, chairman of the programming committee, at 414-2598.

## Co-op Party Postponed

One casualty of Friday night, January 4's snowfall was the 40th Anniversary celebration of Greenbelt Cooperative, Inc. (formerly GSC). The program had been planned to take place at Center School, and when the county schools shut down Friday afternoon, all activities scheduled for those buildings were automatically cancelled as well.

Bruce Bowman, chairman for the anniversary party, said a new date will be set when the GCI board of directors holds its next meeting.

## Toastmasters Club Elects 2 Greenbelters Officers

Delores Ramsey of Charles-towne Village was elected President and Stephen Polaschik of 12-D Ridge Road was elected treasurer of the Columbian Toastmasters Club which meets on the first and third Wednesday of each month at the Knights of Columbus Hall, located at 9220 Baltimore Boulevard, College Park. The meetings of the club begin at 7:30 p.m. and end approximately 9 p.m., including a short intermission.

Visitors are welcome to attend the meetings to learn more about Toastmasters training which is aimed at improving oral expression of thought; developing abilities to appear effectively before audiences; and developing the habit of analytical listening. This training is done in a spirit of mutual helpfulness in a friendly environment.

## The E & F. Roosevelt Democratic Club

The next regular meeting of the E&F Roosevelt Democratic Club will be held on Friday, January 18 at the Greenbriar Community Building. The business meeting will begin at 8 p.m. Guest speaker for the evening will be the Chairman of the Prince Georges County Council, Paris Glendening.

Refreshments will be served and all are welcome.

## It's Academic

Eleanor Roosevelt will play its first round "It's Academic" game on Sunday, January 20 at 11:30 a.m. on WRC-TV, Channel 4. ERHS will be competing against Virginia high schools, Oakton HS and J.E.B. Stuart HS. Greenbelt Alan Amberg (member of the News Review staff) is captain of the team. Watch to see who wins!

## Solicitations For Firemen's Ass'n.

The Prince Georges County Volunteer Firemen's Association has authorized the B.Y. company to solicit contributions for the Association's yearbook, to be printed for its annual convention. This solicitation will be in the name of the Prince Georges County Volunteer Firemen's Association, not in the name of any local fire company.

The B.Y. company will probably be soliciting in the Greenbelt area, but citizens and merchants are cautioned that B.Y. is the only company authorized to do so. Should anyone receive a solicitation that they suspect is not legitimate, they may contact the local fire department or the Prince Georges Volunteer Firemen's Association.

## Mothers Group Meets

Mothers of pre-school children have the opportunity to chat with other adults, bask in a little peace and quiet, share a common experience, and build mutual support.

Beginning Wednesday, January 23, and continuing for 11 consecutive weeks, such a group will be meeting at Berwyn Presbyterian Church (next to the MacDonalds on Greenbelt Road) from 9:45 a.m. until 11:30 a.m. This will be the second group sponsored by the Help By Phone, Limited, a non-profit group operating in Prince Georges County.

To register, send your name, address, and phone number to: Help-By-Phone, Limited, Box 321, Riverdale, Md. 20840. Baby-sitting will be provided. A fee will be charged. For information call 474-8437. (Questions? Call 474-8437.)

## Poetry Readings by Rhea Cohen

Prize-winning poetess Rhea Cohen will have her poetry reading on Tuesday, January 22 at 8 p.m. at the Washington Project for the Arts. Call 347-8304 for more information.

A staff lobbyist for the Capitol Hill office of the Sierra Club and former Greenbelt councilwoman, Cohen has studied journalism and literature at Northwestern University and Boston University. Three of her poems have prizes in the 1979 competitions for Ohio Poetry Day, and five others have been accepted for publication by *The Dream Shop*, Ohio Verse Writers' Guild; *Visions*, a Wheaton, Md., magazine; *The Jewish Week*; and *HaKof* magazine of Greenbelt.

## Greenbelt Players Schedule Production

# Christacos Agrees to Use of Theatre As Cultural Arts Center for Two Months

by Konrad Herling

An interim agreement has been reached between the Cultural Arts Center, Inc. and theatre owner George Christacos providing for rental of the theatre on a month-to-month basis. The City Council assisted in the successful effort to defer a final negotiated lease deadline for an indefinite period. In addition, the Greenbelt Players, nee Grenoble Theatre Guild, will present a play in the theatre during the last weekend in March and the first weekend in April.

The arrangement with owner Christacos was reached with the assistance of Councilman Richard Castaldi and Tony McCarthy. It requires a rent of \$500 plus

utilities for each of February and March, an amount to be renegotiated with Christacos upon the expiration of that period.

The Greenbelt Players will be deciding within the next few weeks which of three plays will be presented. Announcements for tryouts will be made at that point throughout the community. Angela Schreiber, one of the key actresses involved in the production, said, "We want as many people to come to these tryouts as is possible. I hope a lot of talent from the Greenbelt community will show up." She also made clear that anyone with talents or knowledge in carpentry, electrical operations, lighting, sound systems, painting, or just hammering a nail are welcome and necessary. Summarizing her

comments at last Sunday's Cultural Arts meeting, Schreiber said, about the production and anticipated impact, "We want people to know that this is their playhouse, their theatre; that you won't have to go to the Kennedy Center to see a good play."

## Greenbelt News Review

AN INDEPENDENT NEWSPAPER  
ALFRED M. SKOLNIK, PRESIDENT, 1959-1977  
Editor: Mary Lou Williamson, 441-2662  
News Editor: Elaine Skolnik, 474-6060  
Copy Editors: Barbara Likowski, 474-8483  
Virginia Beauchamp  
STAFF

Hally Ahearn, Alan Amberg, Sandra Barnes, Suzanne Batra, Edith Beauchamp, Clint Boushell, Linda Braun, Margaret Butler, Carl Choper, Corrine Comulada, Judy Goldstein, Marion Harrison, Janet James, Bernice Kastner, Sid Kastner, Martha Kaufman, Katherine Keene, John Kelly, Sylvia Langford, Dorothy Lauber, Loretta Levesque, Larry Levine, Leta Mach, Linda Orenstein, Lois Schrom, Pearl Siegel, James Simon, Joanne Tucker, Jean Turkiewicz, Otille Van Allen.

Business Manager: Betty Aggson; Circulation Manager: Mike Jones; 441-2717, 474-6001; Springhill Lake Circulation: Barbara Clawson, 474-4541. News Review answering machine: 474-4131.

Published every Thursday by Greenbelt Cooperative Publishing Association, Inc.

### BOARD OF DIRECTORS

Pres., Elaine Skolnik; Vice Pres., Sid Kastner; Sec., Barbara Likowski; Treas., Leta Mach; Virginia Beauchamp.

MAIL SUBSCRIPTIONS: \$15 per year. Advertising and news articles may be mailed (Box 68, Greenbelt); deposited in our box at the Twin Pines Office before 4:30 p.m. Tuesday; or delivered to the editorial office in the basement of 15 Parkway. (474-4131). The office is open Monday after 8 pm for display adverts.ng; deadline is 10 pm. News articles and classified ads are accepted after 8 pm on Tuesday; deadline is 10 pm.

Volume 43, Number 9

Thursday, January 17, 1980

### Legion Auxiliary

#### To the Editor:

Greenbelt Unit No. 136, American Legion Auxiliary, wishes all a healthy and prosperous New Year. We plan to continue offering our services in 1980—the new decade.

Many persons were remembered at Christmas and Thanksgiving with gifts and/or baskets filled with goodies. We were happy to share special moments with those who needed a friend during the holiday season.

Our Junior group spread Santa's cheer to the Greenbelt Convalescent Center residents, singing carols and brightening meal-times with handmade holiday placemats. Continuing to share, they sorted and donated over 250 pieces of new and used clothing for Great Oaks Center.

We are a veterans organization and we didn't forget our veterans! The women patients at Washington VA Medical Center were delighted with the decorated perfumed soap tray favors our juniors made for them. Mrs. Link, our community service chairman, sent best wishes to 18 servicemen/women who could not be with their families during this Yule season.

Cards were sent to our citizens being held hostage in Iran, expressing our concern and our belief regarding their speedy release.

Our Unit is here to aid the community, and any persons who are in need. Because we frequently ask for your cooperation on our projects, we wanted you to know the results of your cooperation. Please let us know how we can be of further support to the community.

Sandi Willoughby,  
President

### Archeology and the Bible

A brief course on Archeology and the Bible will be offered at Holy Cross Lutheran Church on Wednesday, January 23 and 30, February 6 and 13. The class will begin at 12 noon and adjourn at 1 p.m.

The course will be taught by the Rev. Arthur Kringel of Baltimore. Rev. Kringel has completed four years of post-graduate studies at Johns Hopkins University in the Department of Near Eastern Studies.

No registration fee is required. A free-will offering will be received. For transportation, call 345-5111.

### Teen Ski Trip

The first ski trip of 1980 has been rescheduled for Wed., Jan. 23rd. The bus will leave at 4 p.m. sharp from the Youth Center parking lot. There are still a few openings. First come, first served. For further information, see JoAnn Rowe at the Youth Center, or call 474-6878, 1-10 p.m.

### Scott Alan French

Scott Alan French, 15, Periwinkel Court, died Friday, January 11, from an accidental gunshot wound. Scott was in the tenth grade at Eleanor Roosevelt High School. He attended Mary Bethune Junior High and Center Elementary School. Scott was an active tennis player. He had been working part-time at the Storm Inn.

Scott is survived by his mother and father, Ann and Harold French, sisters Leslie and Cherie, a brother, Robert, and grandmother, Gladys P. French.

Memorial services were held Tuesday, January 15 at Holy Cross Lutheran Church with interment at Maryland National Memorial Park in Laurel.

### Gong Show II

#### To the Editor:

The Greenbelt Cultural Arts Center is a reality and can survive with community support. The main ingredient of a successful Center is, as with anything else, money. The Cultural Arts Center needs as much as it can possibly get.

The Greenbelt Jaycees are helping in this effort by sponsoring Greenbelt Gong Show II. You can help simply by attending the show. For a nominal fee you can be a supporter of the Greenbelt Cultural Arts Center. For the admission price, you will be treated to a zany night of humor and talent and possibly win one of the many door prizes being offered by the local merchants.

Our Mayor, Gil Weidenfeld, has offered his time as a Celebrity Judge. Joining him will be Maryland Terrapins running back, Charlie Wysocki, the leading rusher of the Atlantic Conference for 1979. Rounding off the list of Celebrity Judges is Cindy Baker, Miss Prince Georges County, 1979.

The show will be held on Saturday, January 19 at 7:30 p.m. at St. Hugh's Grenoble Hall. We have quite a few contestants and, hopefully, quite a large audience.

It would be quite helpful if people could bring baked goods for sale at the show. This will lend a bit more financial support to this effort and provide goodies for the audience.

Why not support the Greenbelt Cultural Arts Center? Come to Greenbelt Gong Show II.

Bob Phillips

### Mishkan Torah

Roy Mittleman, a third year student of the Reconstructionist Rabbinical College and a master's candidate in Psychology of Religion at Temple University, will serve as guest rabbi at the Mishkan Torah on Friday and Saturday. On January 18 at 8 p.m. he will discuss the Jews of Morocco and on January 19 at 9:30 a.m. his topic will be "The Jews for Jesus, an Eyewitness Account." Interested residents are welcome.

### Information Needed To the Editor:

Unlike some members of Greenbelt Homes, Inc., our committee does feel that the chemical issue is important and ought not be taken lightly.

Accordingly, our group is devoting considerable time and energy in an effort to determine the facts.

To date the investigation has been hampered by individuals who claim to have information, but have refused to divulge it to the committee when asked. Such refusals to assist the committee are counter-productive and contrary to the intent of the committee. On the other hand, those responsible individuals who have cooperated have assisted us greatly.

We need all the help we can get. If you have any information concerning the areas that we are looking into, please contact us.

Ad Hoc Committee investigating chemical purchases and usage: Barbara Ahearn; Della Donaldson; Joe Jenkins, Chairman, 474-2639; Joe McNamara; and Jean Nance.

### Personal Contact Brigade

#### To the Editor:

Out of 1,586 eligible voters, only 300 took the trouble to attend the important GHI membership meeting to vote on the necessity for increasing their monthly payments. The increase made necessary by the tremendous rise in heating oil prices, which required our democratically elected management to ask a reasonable budget increase in order to maintain our homes and continue to provide for our comfort and enjoyment.

The apathy of our GHI membership, with a few exceptions, and the lack of understanding of the ideals and objectives of our cooperative and the obligation to provide our elected authority with the financial means to provide for our "common good", is appalling. The majority of those attending the meeting, numbering only 186, fell for the same old deceptive tactics exercised by a few that have impeded our progress in the past and threaten our financial integrity at present, to the point where we might even face the loss of our homes.

The bag of dirty tricks employed by these few is to launch a vendetta against the board and cause confusion which diverts the membership from facing up to the grim possibility of financial disaster. Their tactics also have a tendency to discourage members from attending future meetings, which makes the destructive purposes of the few easier to achieve. They used the same bag of tricks during the membership meeting on rehabilitation and almost succeeded in defeating that progressive measure.

Since only 300 people voted on the increase, we must take quick action to hold another general membership meeting to reconsider the budget and monthly payment issue. But this time our members must be alerted to the true facts. We are, therefore, organizing a "Telephone and Personal Contact Brigade" armed with the facts to move our membership to take positive action and turn a deaf ear to those few "agents provocateur" who would destroy our cooperative and cause us to lose our homes.

Will you volunteer to fight to save your homes by joining forces with us to combat the enemy? Call 474-6646 or write to me at 45S Ridge Road.

Martin Holly

### Boys & Girls Club

by Ernest Varda

During 1979 the Boys and Girls Club membership increased 12% from 363 to 406. The club remains in "AA" status ("AAA" status begins with 500 members).

The number of basketball teams has increased from 13 to 16 while the number of basketball players jumped 18% over the number of 1978 participants.

Of the 16 volunteer coaches, 12 have had prior basketball experience. Tony Bouknight, one of our new volunteers, coached the 14-year-old boys team to a 47-45 victory over Fort Washington ("AAA") in the Prince Georges County Boys and Girls Club Christmas Tournament.

Other new coaches are Ed Daffron, Bob Hawks, and Bob Lud-dy. They are instructing intramural teams. Experienced coaches; Joann Rowe, Lori Kellaheer, and Toni Bram are instructing girls 18, 15, and 13, respectively. Jeff Cumberland, Bob Sonneveldt, Phil Straw, Tony Bouknight, Gene Kellaheer, Mike Gielen, Bill Rice, and Mel Scites coach boys ages 18, 17, 15, 14, 13, 12, 11 and 10, respectively. The experienced intramural coaches are Mike Gielen and Steve Leslie.

The club is grateful to the Recreation Department for allocating an additional seven hours of facility space per week over the 1978 allocation. This will enable the teams to continue to practice once the official season begins.

### MOWATT MEMORIAL

United Methodist Church

40 Ridge Rd. 474-9410

Church School 9:30-10:30 a.m.

Morning Worship 11 a.m.

Rev. Ira C. Keperling, Pastor  
474-1924

### ST. JOHN'S CHURCH

Episcopal

Baltimore Blvd. at Powder Mill Rd., Beltsville

8:30 a.m. Holy Eucharist

10:30 a.m. Morning Prayer

10:30 a.m. Sunday School

Rev. John G. Bals, Rector  
422-8057

### MISHKAN TORAH

Ridge & Westway

474-4223

Rabbi Kenneth Berger

Thursday, Jan. 17, 8 p.m. Film "Judaism, The Chosen People."

Discussion - "What It Is To Be A Jew - What Makes A Jew." Fri., Jan. 18, 8 p.m. Roy Mittleman, Rabbinic Intern, "The Jews of Morocco."

Sat., Jan. 19, 9:30 a.m. Roy Mittleman, Rabbinic Intern, "Jews For Jesus, an Eyewitness Account"

Sun., Jan. 20, 7:30 p.m. Membership Meeting

Tues., Jan. 22, 8 p.m. Sisterhood Meeting, 9 p.m. Linda Spevack speaks on Consumer Issues.

### YOU DO NOT HAVE TO GO IT ALONE

You are invited to worship with us

### GREENBELT BAPTIST CHURCH

474-4212

Crescent & Greenhill Roads

Bible Study for all ages (Sun.)

9:45 am

Worship services

11:00 am & 7:00 pm

Mid-week Prayer service (Wed.)

8:00 pm

For bus transportation, call Church office

8:30-12:30 weekdays.

### Greenbelt Community Church



(United Church of Christ)  
Hillside and Crescent Roads  
Phone 474-6171 mornings  
Church School for All Ages -  
9:45 a.m.  
Family Worship Service -  
11 a.m.  
Nursery provided at  
2B Hillside  
Rev. Sherry Taylor and  
Rev. Harry Taylor co-pastors



### Holy Cross Lutheran Church

6905 Greenbelt Road

Worship Services: 8:30 and 11:15 a.m.

Sunday School: 9:50 a.m.

Weekday Nursery School: 9-11:30 a.m.

Edward H. Birner, Pastor

Phone 345-5111

**POST OFFICE from page 1**

good. Discussing possible sites, Fleming noted amiably that council kept pushing him to Greenbelt Road.

As the evening began, council restated its position for postal officials, who included Tom Co-mick and the "two Georges," George Dennison and George Glover. Weidenfeld voiced the city's desire to have full custom-er services remain in the core of the city. He expressed his belief that Greenbelt was special, a place with a real sense of com-munity. One reason for this, he noted, is that it is a walking community. People walk to the center mall to use the post office, he said. "The post office is one of the delicate threads that keep that center together." Further, he reiterated the fears that a postal facility on Parkway and Crescent would change the char-acter of that residential area. In view of Greenbelt's history (the center mall was the first shopping center in the country) Weidenfeld concluded, "Costs aren't everything; don't measure everything by costs."

**PGCC Late Registration**

Classes for the 1980 spring se-mester at Prince Georges Com-munity College will begin on Monday, January 21.

Students can register weekdays from 9 a.m. to 7 p.m. through January 18 at the Community College registration desk in Bladen Hall, Largo. Late registra-tion and schedule adjustments will be offered from January 19 to 25.

For further information or a copy of the spring schedule of classes, call 322-0915.

**Clergy Offer Bible Studies**

The Greenbelt Clergy Associa-tion is offering the community an opportunity to study at the feet of outstanding Old and New Testament theologians on Thurs-day, January 24 and 31 at 7:30 p.m. Sessions will be held at the Mishkan Torah, Westway and Ridge Roads.

The first session of the even-ing, 7:30 to 8:30 p.m., will be an overview of the Pentateuch (the first five books of the Old Tes-tament). It will be led by Rabbi Harold White, chaplain at Georgetown University and pro-fessor of Old Testament The-ology.

The second session, 8:30-9:30 p.m., will be an overview of the Synoptic Gospels presented by Father Stephen J. Hartdegen, O.F.M. Father Hartdegen is also the general editor of the New American Bible and a Professor of Scripture at Catholic Univer-sity.

There will be a question and answer period and refreshments will be served. For further in-formation call 474-4223. There will be a registration fee.

The Greenbelt Clergy Associa-tion consists of the Holy Cross Lutheran Church, Mowatt Me-morial Methodist Church, Mish-kan Torah Synagogue, Greenbelt Baptist Church, Greenbelt Com-munity Church, St. Hugh's Ro-man Catholic Church and Baha'i Community.

**Mishkan Torah Sisterhood**

The Mishkan Torah Sisterhood will meet on Tuesday, January 22 at 8 p.m. At 9 p.m. Linda Spevack, an attorney with Katz and McClellan, will speak on consumer issues. Interested per-sons are welcome.

**Long Distance Results Show Local Fast Finish**

Eleven Greenbelters are known to have finished two long distance races held in Greenbelt as part of the annual races held by the D.C. Road Runners Club, on De-cember 23. The course started at Braden Field and continued for five miles into the farm.

**20 Mile**—55 finishers. Winner was Dave Lieb, 19, of Vienna, Va., 1:53:21. Greenbelters Al Morris was 20th, 2:14:49, and Alexander Barnes 37th, 2:31:53.

**10 Mile**—86 finishers. Winner was John Blankfield, 20, Frost-burg, 53:09. Greenbelters finished 38th, George Farris, 70:42; 41st Nelson Oertel, 71:35; 46th Robert Mongelli, 72:07; 47th Bill Bishop, 73:02; 55th Lee Johnson, 76:01; 56th Shalom Fisher, 76:57; 64th Les Myers, 79:57; 72nd Ann Park, 85:14; and 78th Bob Baker, 89:30. All Greenbelters will receive tro-phies—contact Larry Noel 474-9362. The Greenbelt Recreation Department, co-sponsored the event.

**La Leche Meeting**

The Greenbelt LaLeche League will hold its monthly meeting on Monday, Jan 21, at 8 p.m. The new meeting place is 18 Woodland Way. Topic: "The Advantages of Breastfeeding." For information call 345-2670

**Baha'i Meeting**

"The Violence-Free Society," the cherished hope of all for the future, is the subject of the monthly meeting of the Baha'is of Greenbelt to be held Friday, January 25, at 8 p.m., at 120 Rosewood.

Ms. Anita Chapman, member of the Baha'i Executive Council of Washington, D.C., will be ad-dressing the meeting. The public is encouraged to attend, and a children's film program is pro-vided for those wishing to come as a family. The children's mov-ies to be shown are: "A World

**Mishkan Torah News**

Mishkan Torah will hold a Family Service on Friday, Jan. 25 at 8 p.m. Children with birth-days in January and February will be honored.

On Saturday, January 2, Ber-nard Rosenberg, well-known Washington Jewish communal leader, will speak. Services start at 9:30 a.m.

Is "Born (from Fantasia)," "The Doughnuts," and "Ti-Jean Goes Lumbering."

For more information call 474-6779 or 474-4090.



**GHI MEMBERS**

**HEARING ON GARAGE REFERENDUM**

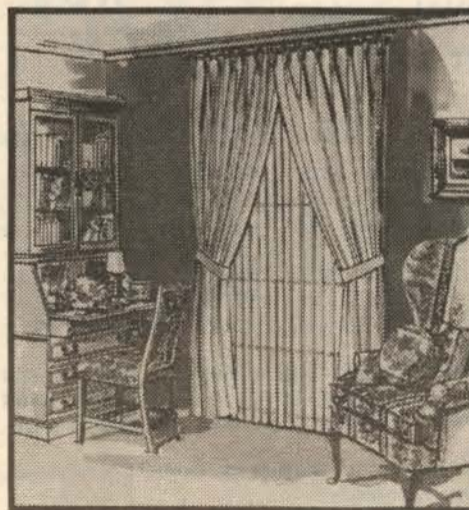
Saturday, January 19

10 a.m. to noon

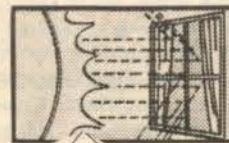
City Council Chambers, Municipal Bldg.

Ask questions, make comments, obtain additional information on issues related to use of GHI's rental garages.

Foamback custom draperies from Will's.  
**Think of them as a present from your utility company.**



They insulate against heat and cold.



One Call Does It All.  
We make  
We measure  
We install

**SAVE 30%\* on fabric, lining and labor**

You can afford beautiful new custom draperies from Will's. These foamback fabrics are not only gorgeous, they insulate against both heat and cold. With Will's foamback custom draperies, you'll cut the cost of heating and cooling your home while you beautify it — and that's a nice present for you. During this sale you can choose from three popular fabrics in a variety of colors. All will pay for themselves in the years to come.

Call Will's today and get ready for an energy boost. FREE Decorator shop-at-home service available.

**HURRY. LIMITED TIME OFFER**

Home Decorating Center

Chestnut Hill Shopping Center  
10506 Baltimore Boulevard  
Beltsville, Maryland 20705  
(301) 937-3733

\*Discount is off our regular, current price.

Sale expires Jan. 24, 1980

**Official Notice**

**TWIN PINES SAVINGS & LOAN ASSOCIATION NOTICE TO MEMBERS**

The Nominations and Elections Committee of Twin Pines is currently seeking names of persons interested in filling any of the seven elective positions which will be voted upon in the upcoming annual meeting. These positions are:

- Three positions on the Board of Directors for terms of three years;
- Two positions on the Nominations and Elections Committee for terms of two years;
- Two positions on the Member Relations Committee for terms of two years.

**Minimum** qualifications for all positions are membership in Twin Pines (loan or savings of \$100 or more) and willingness to serve if elected.

Persons who meet these qualifications, or who know of others who meet these qualifications are asked to inform the Committee in writing at the following address:

Nominations and Elections Committee  
Twin Pines Savings and Loan Association  
105 Centerway  
Greenbelt, Maryland 20770

**Deadline for suggestions for nominations is Thursday, February 14, 1980.**

**REGARDING PETITIONS**

Although it is highly recommended that potential candidates submit their names to the Nominations and Elections Committee, the Bylaws of Twin Pines provide for candidacy by petition. Such petitions must be signed by at least twenty-five members of Twin Pines and must be turned in to the Twin Pines office or to the Secretary of Twin Pines on or before Monday, February 25, 1980.

In addition, items of business can be placed on the agenda of the annual meeting by petition. Such petitions must be signed by at least fifteen members of Twin Pines, must contain an explanatory statement, and must be turned in to the Twin Pines office or to the Secretary of Twin Pines on or before Monday, February 25, 1980.

**The Annual Meeting is scheduled for Tuesday, March 25 at 8 p.m. The official meeting notice will be published in approximately one month.**

# Citizens Advisory Committee on Busing Hears Demographic Report on County

by Hally Ahearn

At its fifth meeting, on January 7, members of the Citizens Advisory Committee on Busing listened to a report by demographer George Grier from the Council of Governments on the growth, housing turnover and distribution of blacks in Prince Georges County. The difficult task before the committee is to develop principles on which to base their recommendations to the Prince Georges County School Board, while setting up flexible solutions that allow for growth and turnover in the county.

The committee is charged with reviewing present elementary school busing plans in order to recommend means of reducing both the number of students bused for desegregation and the distances some of them are bused, without breaking desegregation guidelines set by the federal courts. Although the school board is not obligated to follow the committee's recommendations, these recommendations must stand up to review by the federal court order to be considered for adoption.

Although Prince Georges County is often regarded as a poor relative, the demographer reminded the committee that the Washington area is one of the wealthiest in the country (exceeded only by Connecticut), that Prince Georges is the third wealthiest county in the metropolitan area (exceeded only by Montgomery and Fairfax), and that this makes the county one of the wealthiest in the nation. This wealth, Grier said, accounts for considerable housing turmoil, for changes in housing as people move up the economic ladder.

Further, he noted that while in the 1960s the area was the most rapidly growing in the nation, in the 1970s this growth slowed. Prince Georges County is now "virtually level" in its rate of growth. Although the area has a large black population, that population has not grown proportionately. The proportion of blacks in the metropolitan area in 1920 was 25 percent; it is 25 percent today.

Washington's black population is relatively wealthy, with one of the highest income averages in the nation. Upwardly mobile blacks contribute to the high rate of housing turnover in the area, although Grier cited that in Prince Georges County the black population is still concentrated in a narrow wedge along Central Avenue. This pattern, once and possibly still reinforced by the real estate industry—"and unfortunately by the school system"—continues, he said. Of course, there are pockets of blacks, and integrated communities, in other parts of the county.

Another trend is dubbed the "baby bust." The average family has dropped from a statistical 3.6 persons to 1.8, causing a dramatic drop in school population. And the public school population has dropped even further since a portion of white students now attend private schools to avoid busing and desegregation.

Any new plan to apportion percentages of black and white students in the public schools

along federal guidelines could remain viable for a period of only two or three years, according to the demographer, because of the high rate of housing turnover in the county.

At the present time the committee's charge is limited to elementary schools. One of the committee members, Robert Alcock, presented the results of his attempt to apply a "unitary" concept to the current busing situation among elementary schools in the county to clear up instances of obvious disparity or "overbusing." In one instance two neighboring communities, one once largely black and the other largely white are now one still largely black, the other integrated. He proposed that students from the black community now being bused into the other neighborhood be returned to their neighborhood school, although this would raise the black percentage in that school somewhat, and that students in the now integrated neighborhood be returned to their own neighborhood school, since the neighborhood itself provides an acceptable racial mix. He suggested that the committee might consider "rewarding" integrated communities in this way. In other instances he cited apartment complexes where children are bused to different schools according to what building they live in. In one case children from one building attend an elementary school across the street from the complex, while children from another building are bused some distance. In another case children from one building are bused about 20 miles north. "Surely we can find a closer school for these children to attend," Alcock said.

The committee voted to address the question, "What constitutes an integrated school?" after the school system's Office of Pupil Accounting supplies it with new attendance boundaries based on the number of children attending neighborhood schools. The current guidelines of not less than 10 percent nor more than 50 percent black enrollment in any one school are deemed unrealistic in view of the September 1979 black elementary school enrollment of 49.2 percent.

Should school closings be considered as part of the committee's report? There are currently over 20,000 vacant pupil seats in elementary schools in the county, but in considering this thorny question one of the members recalled that the question of school closings caused more public outcry, more attendance at school board meetings, than did busing. After considerable discussion the committee agreed, in effect, to include the reality of school closings in their deliberations, but not make any recommendations for closing specific schools in order to facilitate racial composition.

At their next meeting on Monday, January 21, 7:30 p.m. at Eleanor Roosevelt High School, the committee expects to have the statistics from the Office of Pupil Accounting, and to discuss the pros and cons of busing for racial balance in Prince Georges County.

The Reverend Harry Taylor of Greenbelt Community Church was recently named by Prince Georges County School Board member Lesley Kreimer to the Citizens Advisory Committee on Busing. Also serving on the committee is Greenbelter Katharine Gough.

## Our Neighbors

Our deepest sympathy to the members of the French family on the tragic loss of their son and brother, Scott.

Shipboard companion of Judy Goldstein on the Doric was Greenbelter Dorothea Leslie. Judy recounts in her article "Travelling on the Doric" their experiences on a recent cruise to Bermuda. After just a few hours on the ship, Judy had a feeling of *deja vu* and before long she discovered that the Doric had two previous names, the "Hanseatic" and the "Shalom." Well, Judy was aboard the "Shalom" in 1967.

## Green Ridge House Holiday Parties Held

About seventy Green Ridge House residents attended a Christmas party on December 19. Senator Ed Conroy, Mayor and Mrs. Gil Weidenfeld and Mr. and Mrs. Robert Dove were guests.

The residents enjoyed the Pearl Band of Beltsville who furnished the music and entertainment for the evening, free of charge. Door prizes were given out and refreshments were served.

A New Year's Eve party was held on Monday, December 31 from 8 p.m. until 1 a.m. Hats and noisemakers were distributed and refreshments were served during the dance.

## Greenbelt Pizza-Sub Shop

**FRIDAY & SATURDAY: Thick Crust Pepperoni**  
 Pizza ..... \$3.25  
**THE FAT KAT IS BACK**  
 Cold Cut or Meatball Sub (your choice) ..... \$2.10  
**JANUARY 17-23: COLD DRINKS:**  
 16 oz. Grape Drink or Punch (your choice) 25c/bottle  
 16 oz. Sunkist Orange ..... 27c/bottle  
**107 CENTERWAY 474-4998**



**GREENBELT HOMES INC.**

**GREENBELT COMMUNITY**

**THE COOPERATIVE**

**GREENBELT — the**

**"Unique"**

**community in a**

**setting of suburban**

**living & historical**

**background!**

**BEFORE YOU BUY A HOME NOW - LOOK AT OUR CO-OP TOWNHOMES . . . MODESTLY PRICED TO FIT TODAY'S BUDGET.**

- A **MUST** to see . . . attractive, neat & newly redecorated 2 br. masonry w/garage - very good loc. \$32,000.
  - 2 br. masonry, lg. corner lot; very new kitchen & loads of extras - \$37,091.
  - 2 br. frame with new kitchen & bath; nice appl. - large corner lot facing woods; \$21,600.
  - 2 br. frame very close to shopping area; good parking; remodeled kitchen - excell. cond. - \$22,550.
  - 2 br. frame with lg. addition; sep dining room, den, choice loc. - \$34,000 or best offer.
  - 3 br. frame, fenced yard, cor. lot; very new kitchen; extras including screened porch and good parking - \$31,550.
  - 3 br. frame, within walking distance to shopping & bus; beautifully redecorated; appl., \$30,000.
- The "little" apt. for the single who wants his own place . . . check this extra nice 1 br. apt. with private entrance; many extras - \$15,000


Other exceptionally nice properties listed - select your home now! **LIVE IN GREENBELT**

Mo. Chg. covers **HEAT/TAXES**; water/sewer; structural mtn. & ins., trash/garbage removal.

**SALES OFFICE OPEN SEVEN DAYS Mon.-Fri. 8:30 - 5**  
**A WEEK Sat. 10 - 5**  
**LOCATED ON HAMILTON PL. Sun. Noon - 5**

474-4161                      474-4244

474-4331




**equal housing opportunity**

## AUCTION

**FRIDAY, JANUARY 18**

### GREENBELT NATIONAL GUARD ARMORY



**TED & EDNA PHONE 772-2474**

**OAK:** Ornate bow front Larkin desk 6'6"; Bow front china cabinet, mirror, claw feet; Leaded glass stack bookcase; Corner China cabinet, leaded glass; Pedestal table & 4 legs w/10 leaves; 6 chairs; Ice box, 3-door, porcelain lined; Larkin table; Bonnet chest; Library table; Chest drawer w/mirror; Commode; Small mission oak bookcase; Washstand; Princess dresser; Pr. small tables; Sm. table w/drawer; File cabinet; Wall phone; Smoking stand; 4' Bench; 3-Piece Butterprint Cottage Bedroom Set;

**MAHOGANY:** Dining Room Suite, rd table w/5 leaves, split pedestal w/5th leg; 4 chairs, server, very ornate claw foot set; Smoking stand w/cobalt blue jars; sm table; sm drop leaf table w/2 drs; Needle-point club foot stool;

**WALNUT:** Victorian gambling table; Marble top table; Linen closet, bevel glass, mirror gallery; Commode;

**PINE:** Table, Tool box; Old sled; Cherry cottage dresser w/cherries & leaf carving w/rd beveled mirror;

**BRASS:** Old kettle; Ink well; Wall sconce; Vase; Anchor paperweight, etc. Floor lamp brass & alabaster;

**MISCELLANEOUS:** Wicker planter; 30" Wood carving of hunter, birds and a tree; Press carved high chair; Childs slatted rocker; Sm curio cabinet; Corner what-not shelf; Towel rack; Crocks; Copper boiler; Aladdin caboose bracket lamp; Pr. glass lamps w/prisms and Williamsburg shades; Pr. walnut lamps; other lamps; 125 pcs. depression, Iris, Adam, Princess; Lace Edge; Fiesta, Miss America; Fire King, Spoke, Ruby, Floral & Pineapple; Spatterware Bowls; Nippon; Spice Sets; Bisque Figurines; Childs Tea Set; Limoge; Homer Laughlin; Roseville; Carnival; N Bowl, Pedestal Fruit Bowl, Other pcs Dresden Girl; Occupied Japan; Old Banks; Display Board of Keys; Sadirons. Many other items!

**NOTE:** Furniture should be removed night of sale.  
**INSPECTION 4 p.m. TIL SALE TIME 7 p.m.**  
**TERMS: CASH OR CHECK W/I.D.**  
**AUCTIONEER - TED MOGER**

# GHI Members Experiment With Electric Heat Systems

by Alan Amberg

The GHI board of directors decided, at its meeting last Thursday, to authorize two pilot projects in electric heating of GHI homes. GHI is now looking for two members, one masonry owner and one frame home owner, to volunteer to convert their homes to radiant electric heat, and allow GHI to measure the cost of electric usage. The test homes will be fitted with resistance radiant heat panels in the ceiling, and an electric hot water heater. These homes will then be disconnected from the oil heating plant. The pilot homes should be end houses, with electrical wiring heaved-up to 150 amps, or ones that can be quickly heaved-up.

The homeowner will be responsible for the cost of heavy-up, installation, and any auxiliary work (i.e., storm windows, insulation, etc.). In return, the homeowner will be provided the heating panels free (retail value about \$500) by the manufacturer, TVI, Inc., of Kensington, as part of a special promotional agreement with GHI. These members will be exempt from GHI heating charges and will pay individually for heat. GHI will pay the cost of monitoring electricity consumption. Electricity will be measured by three meters: one for heat only, one for hot water, and one for overall household usage.

### Electric Heat vs. Oil Heat

The present system of heat in GHI burns oil to heat water which is then pumped through pipes into the radiators. One pipe carries the heated water throughout all the houses served by that heating plant. According to GHI management the oil heat system is inefficient for several reasons: 1) Heat is lost to crawl spaces, boiler plant and from pipes carrying the hot water; 2) since the pipes have a given water pressure, each person tapping the heat or hot water lessens the amount for those further down the line; and 3) oil heat has a large thermal inertia, i.e., if there is a very cold night, the boiler heats a lot of water—then if the next day is warm the houses are overheated because the water in the system is still hot and cools slowly. Also, in the past eight years, oil prices have risen over 600%, according to GHI president, Don Volk.

Volk and member Steve Curtis listed the following advantages for electric heat: 1) Individual control—member can get just as much as he wants to pay for; 2) option of zone heating—heating only rooms in use; 3) zero thermal inertia—the heating units get hot quickly and cool quickly; 4) lowest capital cost of any heating system—gas takes ductwork; heat pumps are expensive; 5) no loss of BTU's—once the electricity reaches the heating units, it is directly converted to heat; 6) electricity can be generated from many sources.

### Existing Units

There are three units in GHI that now have electric heat. All three use baseboard heating units and heat by convection (they heat the cold air at the floor, which rises and sets up space heating air currents).

These members paid for their heating systems. Steve Curtis, 9-M Ridge Road, put in his system for about \$2,400 (last October). He does not favor the radiant heat system, which he says heats like the sun's rays (the person, not the air). He contends that when the system is off it will be "like when a cloud passes between you and the sun."

Robert Wilhide, 59-G Ridge Road, converted his home to electric heat last March. His two-bedroom frame end house with a

one-bedroom addition has more total outside wall frontage than a three-bedroom frame end house. Wilhide gave the News Review examples of his electric bills. The total electric bill for heat and hot water for November was about \$22; December, which was much colder, \$45.89.

The breakdown of charges for December follows: main house

Wilhide attributes his low bills, in part, to the insulation he added (R-12 walls and R-30 ceilings) when the electric system was installed and to his storm windows, but mostly to the reduced rate he receives as an "All-Electric Home," from PEPCO.

The heating system cost \$1,492 for the equipment, installation and heavy-up, \$433 to insulate the main house, and \$153 (plus installation) for the storm windows. (Prices are those of one year ago.)

Wilhide summed up his feelings about electric heat for the News Review, "On a yearly basis, my total savings will result in a 60-75% reduction in heating,

## Golden Age Club

by Blanche Lee

Newly elected officers of the Greenbelt Golden Age Club for the current year are as follows: President, Henry Buese; Vice President, Florence Holly; Second Vice President, Ann McDonald; Recording Secretary, Lucille Vaughn; Corresponding Secretary, Olga Mae Delle; Treasurer, Delpha Buese. Appointments of chairpersons to the following committees were also announced: Membership, Claire Quintal; Sunshine, Peg Baldwin; Travel, Zelpha Parsons; Publicity, Blanche Lee; and Bingo, Katie Basinger.

Members are reminded that annual dues for 1980 are now due and payable. The club now has 252 members, twenty-six of whom were added during the past year, and looks forward to an active, interesting 1980.

hot water, and maintenance charges, as compared to GHI."

## At the Library

Adult Programs

Book Discussion - Thurs., Jan. 24, 10:15 a.m. "Cannibals and Missionaries" by Mary McCarthy. Please register at the information desk.

Annual Thought-Waves Cover Design Contest. Young Adults, ages 13-18, are invited to submit entries throughout February. Thought-Waves is the library's publication of book and movie reviews as well as original poetry by Prince Georges County teens. Details are available from all County libraries and Junior/Senior High School libraries.

Children's Programs

Exhibits at the library during January:

Eskimo Art by Julian Siomkajlo, Columbia;

Dolls—Ruth Dungan, Greenbelt;

Photographs—Gary Howard, Greenbelt; and

Woodburning Craft—Regina Petrutis, District Heights, Md.

# KASH INC. REALTORS

COMPUTERIZED LISTING SERVICE

WE BUY HOMES — ALL CASH

LET KASH REALTOR HELP YOUR FAMILY

PLANNING ON BUYING OR SELLING CALL NIGHT OR DAY

345-2151



**LANDOVER HILLS**—Are you a veteran with limited cash who wants a really nice home? If you are and have \$1,500 cash, we can make you the owner of this fabulous aluminum siding rambler surrounded by woods. Newly decorated with full basement, rec room with bar, central air conditioning. VA approved at \$62,500, no money down to vets. Call 345-2152.



**COLLEGE PARK, LARGE HOME**—Great investment opportunity. Five bedrooms, 2 full baths, rec room, formal dining room, garage and corner lot. Could be 2 separate apartments. Located only 5 minutes from University of Maryland. Call for more details. Asking \$75,000. 345-2151.



**BELTSVILLE**—Large family special. This very nice rambler in great location has 4 bedrooms, 2 full baths, den, and large rec room in full basement. Central air conditioning, carpeting. Vacant for quick occupancy. VA approved at \$62,000 with no money down to vets. Call 345-2151.



**EXCELLENT STARTER WITH GARAGE**—Well-kept throughout. Features formal dining room, washer, dryer, large front porch, added-on den, and fenced yard. No down payment on VA terms. At a bargain price of only \$45,950. See this home now by calling 345-2151.



**GOOD LOCATION WITH EXCELLENT VALUE** is offered in this 3 bedroom home with large family room addition, wall-to-wall carpet, washer, dryer, patio, and fenced yard with plenty of trees in rear. \$300 down FHA or no down VA terms. Total price is only \$57,000. Call 345-2151.



**TWO-ACRE FARMETTE**—Plus 4 bedroom, 2 full bath house. Also offering plenty of workshop area, barn, and much more including country setting with lots of ranch-style fencing. Located in the Bowie area just off Rt. 301. Don't be late on this one. Call 345-2151.

PRICES  
EFFECTIVE  
JAN. 16, 1980  
THRU  
JAN. 22, 1980  
QUANTITY RIGHTS RESERVED



# CO-OP

CONSUMER SUPERMARKETS  
A DIVISION OF  
GREENBELT CO-OPERATIVE

## Double Savings Coupons!

ON ALL  
MANUFACTURERS

FRESH REGULAR  
**GROUND BEEF**  
\$1.58  
LB

FROZEN IMPORTED  
WHOLE  
**LEG O' LAMB**  
\$1.70  
LB

HUDCO  
**SLICED BACON**  
1-LB VAC PAK 95¢

SOUTHERN ROSE  
**CHICKEN FRANKS**  
1-LB PKG 78¢

Summer Sun stoneware  
**FINAL 2 WEEKS**  
PROMOTION ENDS  
SAT. JAN. 26, 1980  
BONUS VALUE THIS WEEK  
**\$100 OFF ON ANY  
COMPLETER ITEM**

**BONELESS BOTTOM  
ROUND  
ROAST**  
\$1.98  
LB

FROZEN SELF BASTING  
**HEN  
TURKEYS**  
10/14-LB AVG  
USDA A GRADE 69¢  
LB

FROZEN SHENANDOAH  
**TURKEY  
DRUMSTICKS  
OR WINGS**  
USDA A GRADE 62¢  
LB

TAKE ADVANTAGE OF THESE  
**SUPER  
FOOD  
BUYS!**

USDA GRADE A FROZEN SHENANDOAH  
**TURKEY BREAST** 4/6-LB AVG \$1.72  
USDA CHOICE BEEF  
**BONELESS RUMP ROAST** \$2.16  
USDA CHOICE BEEF BONELESS  
**EYE ROUND ROAST** \$2.85

USDA CHOICE BEEF CUBE &  
**SANDWICH STEAK** (FAMILY PAK) \$2.97  
FRESH  
**WHOLE PORK BUTTS** \$1.23  
FRESH  
**SLICED PORK STEAK** \$1.46

CO-OP & ESSKAY  
**SLICED BACON** 1-LB VAC PAK \$1.26  
ESSKAY S.C.  
**LINK PORK SAUSAGE** 4-OZ PKG 70¢  
ESSKAY ORIOLE  
**FRANKS** ALL MEAT \$1.40 LB ALL BEEF \$1.70 LB

SPECIAL BONUS BUY!  
**KRAFT  
MIRACLE WHIP**  
\$1.16  
32-OZ JAR

SPECIAL BONUS BUY!  
**CO-OP VEGETABLE  
SHORTENING**  
\$1.73  
3-LB CAN

SPECIAL BONUS BUY!  
**CO-OP ELBOW  
MACARONI**  
\$0.39  
1-LB PKG

**BIG BONUS COUPON**  
GOOD JAN. 16 THRU JAN. 22, 1980  
GOLD MEDAL **FLOUR**  
5-LB BAG 59¢  
WITHOUT COUPON 79¢  
With This Coupon Excluding Milk, Cigarettes & This Item Limit One Per Family-Good Only At CO-OP

KRAFT  
**Grape Jelly** 2-LB JAR 85¢  
RED, ORANGE OR GRAPE 64-OZ BTL  
**Hawaiian Punch** 81¢

CO-OP  
**Vegetable Soup** 4 10 1/2-OZ CANS \$1.00  
CO-OP BUTTERMILK  
**Pancake Mix** 2-LB BOX 63¢

CO-OP  
**Liquid Bleach** HALF GAL 46¢  
25' OFF  
**Downy** FABRIC SOFTENER 64-OZ JUG \$1.55

**CHECKBOOK** — Supermarket Shopping Survey  
Washington Consumer's Checkbook magazine has just completed the most comprehensive survey-evaluation of the Washington area supermarkets that has ever been conducted.  
**How did Co-op compare to the major food chains?** (Rated by customers)  
"Superior" Meats "Superior" Produce "Superior" Checkout Speed  
**Prices** Co-op—"You may be able to save 2 to 3 percent compared to the major food chains."  
Note: Giant, Safeway, A & P and Grand Union control 90 percent of the Washington area food sales. Big is not always best!

CO-OP  
**Tomato Catsup** 14-OZ BTL 38¢  
CO-OP  
**Cider Vinegar** 32-OZ BTL 65¢  
CO-OP  
**Clover Honey** 1-LB JAR 99¢

CO-OP  
**Non-Fat Dry Milk** 14-OZ PKG \$4.05  
W/IRON  
**Similac Liquid** 12-OZ CAN 69¢  
GERBER  
**Jr. Baby Food** 7-OZ MIN JAR 29¢

CO-OP  
**Toddler Diapers** 12-CY PKG \$1.43  
CO-OP  
**Trash Can Liners** 10-CY PKG \$1.18  
CO-OP  
**Detergent** SUDS CONTROL 10-LB BOX \$3.86

CO-OP  
**Pink Dish Liquid** 32-OZ BTL 76¢  
CO-OP TOILET  
**Bowl Cleaner** 12-OZ BTL 69¢  
(IN MONTGOMERY CO. '1.81) FRESCA,  
**Coke, Tab & Sprite** 4/16-OZ 1.81 BTL \$1.69

**HEALTH & BEAUTY AIDS**  
10' OFF  
**Aim Toothpaste** 3.7-OZ TUBE 59¢  
BABY FRESH SKIN  
**Desitin Lotion** 4-OZ BTL 99¢

**HOUSEWARES & NON FOODS**  
TOILET  
**Bowl Deodorizers** 3 3-OZ PKGS \$1  
TAMPICO  
**Bowl Brush** 1A 99¢

**FROZEN FOODS**  
**MINUTE MAID  
ORANGE JUICE**  
12-OZ CAN 88¢

**DAIRY DEPARTMENT**  
**FLEISCHMANN'S  
MARGARINE**  
1-LB QTRS 88¢

"Quality & Variety Is The Best Value"  
**ORANGES**  
CALIF. NAVEL 10 88 SIZE FOR 88¢  
**CREAMY SMOOTH  
Mushrooms** 98¢ LB  
CRISP  
**Stayman Apples** 3-LB BAG 88¢  
FRESH  
**Green Onions** 4 Bunches \$1  
**WHITE  
INDIAN RIVER  
GRAPE-  
FRUIT** 6 40 SIZE FOR \$1  
**SWEET  
Tangerines** 12 FOR \$1  
SNAPPY  
**Red Radishes** 4-OZ PKG 20¢  
PURPLE TOP  
**Turnips** LB 28¢  
SPANISH  
**Onions** LB 18¢

"EVERYDAY LOW PRICES"  
CO-OP REG. OR FRENCH STYLE  
**Green Beans** 9-OZ PKG 38¢  
CO-OP  
**Broccoli Spears** 10-OZ PKG 48¢  
CO-OP SLICED  
**Strawberries** 10-OZ PKG 56¢  
CO-OP  
**Brussel Sprouts** 20-OZ PKG \$1.18

"EVERYDAY LOW PRICES"  
CHEESE FOOD  
**Kraft Velveeta** 1-LB LOAF \$1.38  
CO-OP CHEESE FOOD  
**Yellow Singles** 1-LB PKG \$1.88  
CO-OP YELLOW EX. SHARP  
**Cheddar Chunk** 10-OZ PKG \$1.55  
CO-OP CHUNK  
**Munster Rind** 10-OZ PKG \$1.37



**GREENBELT**  
121 CENTERWAY ROAD  
GREENBELT, MD.

**WESTMINSTER**  
RT. 140 & ENGLER RD.  
WESTMINSTER, MD.

**ROCKVILLE**  
205 N. WASH. ST.  
ROCKVILLE, MD.

**FAIRLINGTON**  
1603 N. QUAKER LANE  
ALEXANDRIA, VA.

**KENSINGTON**  
3715 UNIVERSITY BLVD.  
KENSINGTON, MD.

## CLASSIFIED

\$1.50 for a ten word minimum. 10c each additional word. Submit ads in writing, accompanied by cash payment to the News Review office at 15 Parkway before 10 p.m. of the Tuesday preceding publication, or to the News Review drop box in the Twin Pines Savings & Loan office before 4:30 p.m. Tuesday. There is no charge for listing items that are found. **BOXED ADS:** \$3.60 minimum for a 1½ inch, 1 column box; \$1.20 each additional half inch. Maximum ad for this section is three inches, and all ads must be prepaid.

**CALDWELL'S WASHER SERVICE.** All makes expertly repaired. Authorized Whirlpool dealer. GR-4-5515.

**PIANO TUNING AND REPAIR** - Expert and Reliable Piano Service to Greenbelt since 1960. Benjamin Berkofsky 474-6894.

**MARIE'S POODLE GROOMING** - Give your dog a new look. Call 474-3219.

**TYPEWRITER REPAIR** - Electric, standard, and portable. Call 474-0594.

### CERTIFIED MASSAGE THERAPY

for women

The value of relaxation today is immeasurable. You're not satisfied feeling tired, tense and stiff? Perhaps massage therapy can help you reach a new sense of well-being. Also suggestions in exercise and deep relaxation techniques. Call 441-8417.

**PIANO LESSONS:** Peabody Conservatory Graduate. Beginners - Advanced. 490-8208.

**ATTENTION G. H. I. MEMBERS - FOR SALE:** 4 bedroom townhouse; 2½ baths, full basement; central c/c; March occupancy. For information call 474-4161, 474-4244.

**PAINTING** - Interior, exterior, 20 yrs. exp. Do my own work. Call Bob Neal, 776-5461.

**APPLIANCE REPAIR,** large and small, including sewing machines. Call Dan, 474-7379.

### RON BORGWARDT

10212 Baltimore Blvd.  
College Park, Md. 20740  
(on U.S. 1 at the Beltway)  
474-8400

"See me for car, home, life, health and business insurance"



State Farm Insurance Companies  
Home Offices: Bloomington, Illinois

**BABYSITTING:** in my home. Playmates available. Call 345-5746.

**LOST** - Ladies Timex Calendar Watch near Co-op Food Store. Call 474-6668.

### STATE FARM



### INSURANCE

For Insurance Call:  
**Don W. Taulelle**  
9200 Edmonston Rd.  
Greenbelt, Md. 20770  
474-5007

Like a good neighbor,  
State Farm is there.  
State Farm Insurance Co's.  
Home Offices: Bloomington, Ill.

**PAINTING** - Interior, exterior, wallpapering, light carpentry, and ceramic tile. Good Greenbelt references, excellent workmanship. Frank Gomez, 474-3814.

**PLASTERING** - Patchwork and ceilings a specialty. Evenings, 345-2534.

### Photography

By  
**J.**

PORTRAITS

ADVERTISING

INSURANCE

**J. Henson, Photographer**  
441-9231

**UNIVERSITY BOUTIQUE INTERNATIONAL, INC.,** offers attractive savings during the present **WINTER CLEARANCE SALE.** You are invited to a visit to see our large **DANSKIN** selection with 25% off on all styles, our lovely and warm wool/silk sweaters, suits and jackets, and our exquisite gold and silver jewelry, most of it handcrafted and very reasonably priced. We also offer jewelry repair service. UBI at 7420 Baltimore Ave., College Park, open 10 a.m.-6:30 p.m., Mon.-Sat. Tel. 277-5521.

**DUE TO INFLATION** typing rates have increased to 70c per sheet and 20c per carbon. Still very reasonable, though. Call 345-9162 between 9 a.m. and 9 p.m.

Reasonable All Work Rates Guaranteed

Odd Jobs a Specialty

### HOME & YARD IMPROVEMENT SERVICES

Everything for your home or yard - No job too small

Free estimates

**Bob Wilhide** 345-8368

**BABYSITTER NEEDED:** Monday & Tuesday for 10 month old boy; my home or yours. 345-5706.

**INCOME TAX PREPARATION** in your home, reasonable rates. Call James Cantwell, CPA. 441-2412.

**FOR SALE:** Telephone End Table, 30" deep x 21" wide x 19" high, walnut finish, excellent condition, \$35. **BINOCULARS,** Century Mark IV with case, never used, \$30. 474-3604.

**LOST:** Lady's watch, round gold color, expandable band, Lake-side North-Lake. 474-3848.

## GHI NOTES

Forms for the 1980 Homeowners' Property Tax Credit Program are now available at the GHI offices. Any member who has not previously filled out an application may pick one up. Those who filed last year should receive a form in the mail. Property tax credits are available to all homeowners regardless of age and are based on the family's gross income. Renters who have reached age 60 or are disabled may qualify for a property tax credit. Those forms are available at GHI too. GHI advises all members who think they might be eligible to fill out the simple one-page form and let the State Department of Assessments and Taxation make the final determination on eligibility. Those not eligible will receive a letter of denial and reasons why.

Members should have received their information materials and ballot on the garage referendum. Anyone not receiving this information, please contact the manager's office. All ballots must be received by 5 p.m., Thursday, Jan. 31.

Free Blood pressure testing, is continuing in the GHI Board Room on the first and third Wednesday of each month.

**Meetings:** GHI Board of Directors, Jan. 24, 8 p.m.

**FOR SALE** - 1.3 acre residential corner lot with water, Charles County. Good investment. Call 332-7791.

**FOUND:** Small black male dog, tan paws, red collar. For information call 474-7200, Greenbelt Police Dept.

**AFTER SCHOOL BABYSITTER** - wanted for 1st grader. Mon.-Wed. near Center School. Call evenings 345-2529.

**TRANS AM, '79** bronze Firebird. New cond.; low mi.; seldom driven. Must sell. 345-3577.

**BABYSITTER** - Reliable young mother will provide tender loving care for your infant or toddler in her home. 345-2413.

**EXPERT PREPARATION** of tax returns in your home. 931-6138.

**HAVE A HIGHLY PROFITABLE AND BEAUTIFUL JEAN SHOP OF YOUR OWN.** Featuring the latest in Jeans, Denims and Sportswear. \$15,500.00 includes beginning inventory, fixtures and training. You may have your store open in as little as 15 days. Call any time for Mr. Colombo (313) 632-7018.

## SPECIAL

\$5.00 off on all  
Repair Jobs  
With This Ad  
CALL 441-9116

## Edgewood TV & Audio

Dependable Guaranteed Service

4932 EDGEWOOD RD.  
COLLEGE PARK, MD. 20740

Licensed & Bonded

● Fantastic Business Opportunity.

● Save 10-50% Over What You're Now Paying at local food stores for Home Care Products.

● Tremendous Products & Service - Home Delivery (Save on Gas and Time)

● We've Got It All!

# AMWAY

Get the **WHOLE STORY** - Call 441-1229

25 Hours a Day - 7 Days a Week

## LEGAL CLINIC of DOUGLAS I. MALCOM

Divorce, Uncont.	200.00
Incorporation	200.00
Simple Will	35.00
Bankruptcy	225.00
Adoption	200.00
Guardianship	100.00
Auto Accident	25%
Hourly Rate	\$ 35.00

(Fees Exclude Costs)

### FREE INITIAL CONSULTATION

Beltway Plaza  
Shopping Center  
Greenbelt, Md. 20770

474-8808

Call for appointment

# Saturday Service Discontinued by Greenbelt Credit Union

Beginning February 2, 1980 the  
**GREENBELT FEDERAL CREDIT UNION**

and the  
**ASPEN HILL SERVICE CENTER**

will be closed on Saturdays.

Regular weekday hours are:

### GREENBELT

Monday thru Thursday 9:00 a.m. - 3:00 p.m.  
Friday 9:00 a.m. - 7:00 p.m.

### ASPEN HILL

Monday thru Friday 10:00 a.m. - 5:00 p.m.  
121 Centerway (P.O. Box 157) Greenbelt, Md. 20770

Phone: 474-5900

# 6% 6.27%

Per Annum paid on  
passbook accounts  
Compounded daily

Annual Yield

Certificate Accounts-\$1000 minimum deposit required

3 month - 6.25% per annum; 6.54% annual yield  
6 months - 6.50% per annum; 6.81% annual yield  
12 months - 7.00% per annum; 7.35% annual yield  
48 months - 7.50% per annum; 7.90% annual yield  
96 months - 8.00% per annum; 8.45% annual yield

Note: A Substantial interest penalty is required by law for early withdrawals.

Money Market Certificate - \$10,000 minimum deposit, 182 day term  
Call for weekly rate.



# TWIN PINES SAVINGS & LOAN ASSOCIATION



Monday-Thursday 9-6  
Friday 9-8  
Saturday 9-12

# 474-6900

Member MSSIC

## Recreation Review

### Winter Class Registration

There are openings in the Winter Classes beginning the week of January 21. Call for further registration information, 474-6878.

### Free Programs Offered

Beginning Monday, January 21, the following free activities will be offered:

**Arts & Crafts (1 hr):** YC/SHLRC, Mon., 3:30 p.m., 1st-3rd graders; and YC/SHLRC, Wed., 3:30 p.m., 4th-6th graders.

**Chucks 'n' Lassies:** Group games/physical fitness program for boys and girls. Club shirts provided for regular attendance. (1½ hrs.); SHLRC, Sat., 9 a.m., 6-10 yrs.; and YC, Sat., 12 noon, 6-10 yrs.

**Funtime:** Stories, games and crafts for fun and skill. (1 hr.) YC/SHLRC, Thurs., 3:30 p.m., 3-6 yrs.

### CPR Classes

The Greenbelt CPR Committee and Greenbelt Recreation Department

encourages you to join in learning this important life saving technique. Non-residents may sign up and be put on a waiting list. There is a fee for all non-residents.

To pre-register, call weekdays, 9 a.m.-5 p.m., 474-6878. Classes are held from 7-10 p.m. at Center Elementary on February 5 and 6 and on March 11 and 12; at SHL Elementary on January 23 and 24, February 20 and 21, and March 26 and 27.

### Winter Coffee House

Since weather conditions are not conducive to chatting in the Center Mall, join the group in the Youth Center Conference Room Sunday afternoons from 1:30-4:30 p.m. Open to adults, 18 years through Senior Citizens, this informal Coffee House Drop-In will provide opportunities to meet and talk with old friends and neighbors and cultivate new acquaintances. Stop by, enjoy that old 'game' called conversation.

## Police Blotter

A 15-year old resident was fatally shot on January 11. In an apparent accident, the youth received a stomach wound when a rifle held by his 18-year old brother discharged. The incident took place in a bedroom where the boys and several friends were listening to music. The older brother, who had recently purchased the rifle for camping and hunting activities, was showing the boys the weapon when it discharged.

Responding to the shooting were police officers Corporal Kenneth Stair, Privates Dave Kress and Tom Justin and Detective Tom Ceccarelli. On the scene also was the Greenbelt Volunteer Fire Department and Rescue Squad paramedics from the the Prince Georges County Medical Unit I (Brentwood) and Mayor Gil Weidenfeld.

Last week three indecent exposure cases took place at three

different locations within the city. All apparently involved the same man. The first took place late evening behind 168 Westway; the second a half-hour later at the entrance to the -1 court of Ridge. The third occurred at 1:30 a.m. outside a window of a home in the 9 court of Southway.

The description of the man given by three women were close enough to determine that the person committing the offense was the same man - a white male, approximately in the mid-twenties, 5' 8" - 5' 10", about 150 lbs., with light brown hair reaching a little below the collar.

As a result of a domestic argument, a woman was arrested on Ridge Rd. and charged with assault and disorderly conduct.

A male shoplifting suspect was arrested at the A & P store in the Beltway Plaza.

An 18-year-old male resident of Crescent Road was apprehended by Officer Craddock for

attempting to enter a vehicle on Ridge Road. He was charged with attempted breaking and entering and tampering with a motor vehicle, then released upon personal recognizance, pending trial.

The owner of the Continental Hobby Crafts in Beltway Plaza reported an attempted break-in on New Year's Day from the roof through the air vent shaft. Patrol officers responded, assisted by the P.G. County K-9 Unit and the U.S. Park Police helicopter, but suspects escaped.

Officers responding to an alarm at Springhill Lake Elementary School disrupted a break-in in progress. Pvt. Love recovered several recording instruments which had been placed under an open window. Patrol units assisted by P.G. County K-9 units checked the interior of the building but the suspects had already fled.

## CITY NOTES

Several members of the general, parks and building maintenance crews worked removing snow from the city streets, parking areas, curb areas, and city walkways. The crew spent one day patching streets throughout the city.

The parks crew has worked several days last week removing dead wood near the Jaycee Clubhouse. The chipper was out picking up Christmas trees. Picnic tables were repaired. Corn was fed to the ducks at the lake. They will continue to be fed during the winter months.

Renovation of the Police Department is continuing. Several members of the building maintenance crew assembled lockers and some have been installed. It was necessary to shorten doors in some of the offices to accommodate carpeting.

The heating system has been repaired at the Springhill Lake Recreation Center gym. The heating system at the City Office Building is now being repaired.

Dr. David Pitt, professor from the University of Maryland Horticulture Department, toured city parks in preparation for selecting a suitable project for his landscape architecture class to participate in during the University's spring semester.

In December an average week's counseling activities were as follows: 41 individuals (19 of whom were under age 18) comprising 18 family units.

The Job Bank had three part time jobs that were completed by three youths. The volunteer tutoring program had 13 students and the GED class ended with a total of 11 participants.

Final coordination for the installation of equipment at the Greenbelt Junior High School Neighborhood Park took place recently. The first phase includes some light thinning of underbrush and installation of a wood climber apparatus, 2 park benches, bike rack, 8 picnic tables and 2 trash receptacles. Work is scheduled to begin soon.

## GREENBELT

### ENCHANTMENT

is the word to describe this 3 bedroom townhome in lovely wooded area. Includes so many extra features!! Washer, dryer, disposal, unique kitchen that's so pleasing, and MORE, MORE, MORE!! \$26,000

### LOCATION, LOCATION

and this lovely 3 bedroom has it all!! Remodeled and modern kitchen, refinished and glowing floors, cozy back porch and MORE!! \$27,000

## LAKESIDE

### KEEP WARM

in front of the huge fireplace in this exquisite 4 bedroom, 2½ bath split-level home that features family room and large wooded lot. Walk to lake and tennis courts. DON'T BE TOO LATE!! Owner financing below market.!

## UPPER MARLBORO

### GORGEOUS

and HOW!! Four level split with rec room plus family room with fireplace, one car garage. GOOD TERMS and asking \$89,900

Call 474-5700

**NYMAN REALTY INC.**

151 Centerway



**AT:** Prince George's Community College Eleanor Roosevelt Extension Center 7500 Hanover Pkwy at Greenbelt Rd. Greenbelt, Maryland

**EARN:** up to 12 credit hours per semester by attending classes only four evenings a week

**COURSES INCLUDE:** Everything from Art through Speech

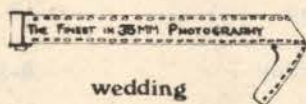
**TUITION:** For Prince George's County residents is ONLY \$17.50 per credit hour

**LATE REGISTRATION:** At the Largo Campus, 301 Largo Road January 19, 21-25 9am-7pm Late Registration Fee: \$15.00

**FOR INFORMATION:**  
 \*Extension Centers 322-0783  
 \*Weekend College, Courses by Newspaper and Television 322-0785  
 \*General Admission and Registration 322-0867

**BE ALL YOU CAN BE**  
**PRINCE GEORGE'S**  
**COMMUNITY COLLEGE**

## Gig's Photos



wedding  
 portraits  
 copy work

Greg Gigliotti 441 2309