

# Greenbelt News Review

AN INDEPENDENT NEWSPAPER

Volume 43, Number 5 P.O. Box 68, Greenbelt, Maryland 20770 Thursday, December 20, 1979

## GHI Members: 'No' to 21% Increase

by Mary Lou Williamson

Greenbelt Homes, Inc., members demanded a no frills budget for 1980 at the December 12 special membership meeting. By a vote of 186 to 114, members turned down the board and management proposed 21.66 percent increase in monthly operating charges and refused to consider a follow-up motion for an 18.11 percent increase. Those present understood there was little that could be done about the price of oil, but they were determined to find at least half of that needed money elsewhere in the budget.

Those who voted no to the increase had not been persuaded by GHI president Don Volk's message at the start of the meeting that "the primary reason for the increase is the cost of fuel oil." GHI has watched this price climb from 45c per gallon when the 1979 budget was approved last December to 75c per gallon now. The board, Volk said, found it very difficult to estimate "what we are going to pay next year." Some thought the price wouldn't go over an average of 85c, others were sure it would top \$1.25. Twice before—last year and following the 1973-74 oil crisis—the corporation had badly underestimated the rise in oil prices, Volk continued. This year, 1979, the heating budget was underestimated by more than \$150,000. There is no provision in the 1980 budget to make up that deficit.

Volk called attention to a graph distributed to members as they entered the meeting. This graph showed that the sharp decrease in the number of gallons consumed over the past 7 years had not resulted in a decrease in the dollar amount GHI must pay out. Fuel now costs GHI four times what it did in 1973. During the same period consumption was reduced 27.2 percent.

Because the costs in heating the homes were expected to approach 50 percent of this year's entire budget, \$2 million out of a total of \$4.9 million, management and board tried to keep a lid on other items. In a time of 13 percent inflation, the remainder of the budget, not including taxes and trash collection, has been decreased 4 percent. Those

items include a reduction of 10 percent in the number of employees and elimination of contributions for contingency reserves. Some members of the board, Volk cautioned, were concerned that the corporation, under the constraints of the new budget, might not be able to maintain a satisfactory level of services.

Volk called for the replacement of the old heating system within one to three years. In the meantime, "If we're going to keep warm, we're going to have to pay the price OPEC sets," Volk concluded.

### Those Who Voted No

One after another, individual members poked and pinched at the budget looking for fat—with calls for a reduction in the payroll being the focal point. Bettie Denson led off: we don't need 25 people to monitor boilers; trucks running up and down the roads; so much for grounds maintenance, engineering work; an assistant manager until the rehab program begins; and we didn't need to pay an expert for a study on future heating systems when our Engineering and Maintenance Committee was studying the same thing. Peg Waincott endorsed Denson's position. Why hadn't GHI rented voting machines for such a crucial vote? Waincott asked.

Carl Conrad called management and board "out of tune. Management makes up an inflated budget, and the board goes along."

Bill Feller challenged the board to cut out "at least five positions" he considers to be frills.

Elizabeth McGinn wondered whether the money collected for rehab (but not yet spent because work hasn't begun) was earning interest. Ben Elkins called management "myopically narrow-minded" for getting 6 percent interest on those funds when they should be getting 17 to 22 percent.

"What am I going to do next year?" pleaded one member. "I can't afford to stay in Greenbelt."

### The Other Side

While there were many who felt otherwise, they were easily outnumbered at the meeting. "This co-operative is a business organization," Martin Holly reminded those present when he

See MEMBERSHIP, p. 3, col. 1

## Board Agonizes Over \$428,700 Budget Cut

by Mary Lou Williamson

No decisions on the budget were made by the Greenbelt Homes, Inc., Board of Directors at the regular meeting on December 13, except to meet again December 19 (last night). In the face of membership refusal to approve an increase of 21.66 percent, the board must knock \$428,700 out of the budget in order to lower the increase to 10 percent. President Don Volk gave the board two choices: 1) go back to the membership with another budget; or 2) cut back to 10 percent.

Three possible options for the board to consider were then presented by Deputy General Manager Ken Kopstein in the absence of the General Manager, Roy Breashears.

**Alternative 1.** Borrow funds needed to amortize the existing capital improvement loans—about \$385,000 for the year and reduction in staff: resales inspector, heating staff (2).

Management called this option the "least disruptive." Budget increases in future years resulting from this increased borrowing could be more readily absorbed after conversion to an individualized heating system during 1980 or 1981. The net decrease in charges to members would be \$433,400. This alternative met with no interest whatever by the board.

**Alternative 2.** If the conversion to an individualized heating system could be accomplished by October 1980, possible savings would be: fuel oil (Oct.-Dec.) \$346,000, heating maintenance (Oct.-Dec.) \$63,000. Elimination of the resale inspector: It might be possible to substitute the heating conversion for some other items in the HUD 312 loan. The net decrease in charges to members would be \$426,000.

**Alternative 3** calls for elimination of 7 staff positions, some contract work (sidewalks) and laying off the rehab construction superintendent until work actually begins. Also included here were several proposals for increasing income from the sales department by reinstating commissions and raising various service fees. Also included were a number of smaller savings and elimination of the \$130,600 for rehab charges. Net decrease in charges to members would be \$435,300.

Kopstein warned the board that "GHI's cash position is not too strong and since we have no crystal ball on fuel prices, we must preserve as much liquidity as possible in the budget in case of crisis. Turning back the heat to an absolute minimum," he continued, "will not realize a lot of savings (\$87,000 at best), will be a potential health hazard for some, especially the elderly, and See BOARD AGONIZES, p. 3, c. 2

## Cultural Arts Center Continues Fund Drive and Coffee Houses

by Konrad Herling

A total of \$2,800 has been raised in less than three weeks by the Citizens for a Greenbelt Cultural Arts Center, it was announced at the group's weekly meeting last Sunday. The group still needs \$1700 to meet its goal of \$4500. to help pay for operating expenses required as part of a potential January 1, 1980, lease agreement. "That objective now appears to be within reach," said Konrad Herling. However, Dave Benson interjected, "We cannot let up. We've got a long way to go and we need a lot more canvassers to do that."

The amount collected is the net result of contributions mailed in to the organization, canvassing, an Open House held December 8, and last Saturday's Coffeehouse. While the total collected will be used to cover rental expenses as agreed upon in negotiating a lease with owner, George Christacos, it was agreed reaching the goal of \$4,500 would be a clear signal to City Council of community support (particularly in light of the time of the year.)

While the monetary objective may be achieved, the problem of co-signature remains unresolved. Where the City Council does have the authority to co-sign such a contract, it has not expressed, as of yet, an expression of commitment to do so.

The organization, it was pointed out, was not asking the city to pay the rent of the facility,

only to allow the group to be able to enter into a contract with Christacos.

The matter of the lease itself came into question. "What we need are some really good negotiators, people who are experienced in this sort of thing," said Trix Whitehall. "We also need to obtain a record of what other lessees are paying for their stores as well as what the prior lessee of the theatre paid," stated Faith Shields Roddell.

Canvassing will continue through the next two weeks and coffeehouses will be held on the last two Saturday evenings of December. These activities are aimed at raising both funds and an awareness of the needs for funds. Those interested in contributing to the canvassing campaign are urged to call Konrad Herling at 345-9369 while those who'd like to donate their services to the coffeehouses will need to contact Dave Benson at 441-2598.

Plans are now underway for a New Year's Eve Gala in the theatre.

It was also announced that a meeting was held Wednesday with several members of the Park and Planning Commission in which information on operating costs, grants, programming and other aspects of the Cheverly Publick Playhouse was discussed. Cheverly's Playhouse, like Greenbelt's facility, is a former theater in which all of the seats had been removed. In the 1975 Prince George's Cultural Study conversion of the Cheverly Theatre into a cultural center was seen to be an unlikely possibility.

### NEWS REVIEW HOLIDAY HOURS

The News Review office will be closed Monday, Dec. 24 and 31, Christmas Eve and New Year's Eve, but will be open between 8 and 10 p.m. on the evenings of Tuesday, Dec. 25 and Jan. 1, Christmas and New Year's day. The display advertising deadline for the next two weeks is extended until 10 p.m. Tuesday.

The News Review box at Twin Pines will be collected at about 11 a.m. on Monday, Dec. 24 and 31 because of the shortened holiday hours kept by Twin Pines.

### DEMOCRATIC CLUB

Representative Gladys Noon Spellman will administer the oath of office to the newly elected officers of the Eleanor & Franklin Roosevelt Democratic Club at its meeting on Friday, December 21, at the Greenbriar Community Building.

The Installation ceremony will begin at 8 p.m. and a holiday reception will follow. All are welcome.

### GHI NOTES

When the membership turned down the increase in monthly charges at the Wednesday, December 12, Special Membership Meeting, the impact was immediately felt in terms of less heat for the homes. Since the increase was almost entirely due to increased fuel costs, the Board of Directors, at its regular meeting on December 13 felt it had little choice but to roll the thermostats back to the legal minimum of 65 degrees in the last house in a

### Holiday Refuse Schedule

The refuse schedule for the Christmas and New Year's holiday weeks will be as follows: Monday - Regular trash service; Tuesday - No trash pick-up; Wednesday - Collection of regular Tuesday route; Thursday and Friday - regular trash service. There will be no paper pick-up for these two weeks. However, on Tuesday, December 25, a truck will be stationed in the parking lot of the Municipal Building from 8:00 A.M. until 4:30 P.M. to be used by City residents for trash disposal.

### Celebrating in Greenbelt

Santa Claus will be at the Youth Center for his annual visit on Saturday, December 22 from 10 a.m. to 1 p.m. All children are invited to talk with Santa.

On Saturday evening beginning at 7:30 p.m. carolers will serenade shoppers at the Center Mall. Greenbelters are invited to join in singing the old familiar holiday favorites. Wrapping up the holiday season's programs are the Jaycees who will travel through the City judging outdoor visual displays.

row served by a particular boiler plant. Similarly, the hot water was reduced to 110 degrees for the last house served by a particular boiler plant.



## HOLIDAY OFFICE HOURS

THE CITY OFFICES WILL BE CLOSED ON MONDAY, DECEMBER 24, 1979. ALSO, THE OFFICE IN THE PUBLIC WORKS DEPARTMENT WILL BE CLOSED ON DECEMBER 24, EVEN THOUGH REFUSE SERVICE WILL BE PROVIDED ON THAT DAY. (SEE REFUSE SCHEDULE). THE OFFICES WILL BE OPEN FROM 8 A.M. UNTIL 4:30 P.M. THE REMAINDER OF THE WEEK, AS WELL AS ON MONDAY, DECEMBER 31.

Guidrun H. Mills, City Clerk



## Greenbelt News Review

AN INDEPENDENT NEWSPAPER  
 ALFRED M. SKOLNIK, PRESIDENT, 1959-1977  
 Editor: Mary Lou Williamson, 441-2552  
 News Editor: Elaine Skolnik, 474-6060  
 Copy Editors: Barbara Likowski, 474-8483  
 Virginia Beauchamp

STAFF  
 Hally Ahearn, Alan Amberg, Sandra Barnes, Suzanne Batra, Edith Beauchamp, Clint Boushell, Linda Braun, Margaret Butler, Carl Choper, Corrine Comulada, Judy Goldstein, Marion Harrison, Janet James, Bernice Kastner, Sid Kastner, Martha Kaufman, Katherine Keene, John Kelly, Sylvia Langford, Dorothy Lauber, Loretta Levesque, Larry Levine, Leta Mach, Linda Orenstein, Lois Schrom, Pearl Siegel, James Simon, Joanne Tucker, Jean Turkiewicz, Otilie Van Allen,  
 Business Manager: Betty Aggson; Circulation Manager: Mike Jones; 441-2717, 474-6001; Springhill Lake Circulation: Barbara Clawson, 474-4541. News Review answering machine: 474-4131.

Published every Thursday by Greenbelt Cooperative Publishing Association, Inc.  
 BOARD OF DIRECTORS  
 Pres., Elaine Skolnik; Vice Pres., Sid Kastner; Sec., Barbara Likowski; Treas., Leta Mach; Virginia Beauchamp.  
 MAIL SUBSCRIPTIONS: \$15 per year. Advertising and news articles may be mailed (Box 68, Greenbelt); deposited in our box at the Twin Pines Office before 4:30 p.m. Tuesday; or delivered to the editorial office in the basement of 15 Parkway. (474-4131). The office is open Monday after 8 pm for display advertising; deadline is 10 pm. News articles and classified ads are accepted after 8 pm on Tuesday; deadline is 10 pm.

Volume 43, Number 5

Thursday, December 20, 1979

### THANKS

To the Editor:

Our family's thanks to the police dispatcher who was on the radio right away, to Officer Murray who came immediately, to those at the Police Department who helped but are unknown to us, and to the Krieger and Gough families who helped us search for our daughter who was missing last Friday. Thank God she was found safe. We are very fortunate to have such wonderful neighbors and Police Department. Patricia N. Charter

### Newspaper, TV Courses

In January the Prince Georges Community College, Community Resources Development and Special Programs Office will offer a course by newspaper and one using television. Beginning in January, also, a person may take weekend courses in one of three ways:

Friday evening, Saturday-Sunday schedule; 15 Saturdays for 3 hours per session; and Friday evenings for 15 sessions.

Registration for all college courses will be held from 9 a.m. to 7 p.m. at the college's Largo campus, 301 Largo Road, beginning January 7 through January 18.

For further information, call 322-0785. For 24-hour information, please call 322-0792.

## The "Hanukkah Bush"

"The Hanukkah Bush," a sermon in drama, will be performed by the Mishkan Torah Players at services on Friday, Dec. 21 at the synagogue. Adapted from a Jean Steiger short story by Greenbelter Frank Pearlman, the play deals with a problem of mixed marriage and the American "melting pot" and Jewish identity. Interested persons are welcome.

### MOWATT MEMORIAL

United Methodist Church  
 40 Ridge Rd. 474-9410  
 Church School 9:30-10:30 a.m.  
 Morning Worship 11 a.m.  
 Rev. Ira C. Keperling, Pastor  
 474-1924

### NEW YEAR'S EVE PARTY

A New Year's Eve party will be held at the Mishkan Torah featuring music, dancing, games, movies, champagne breakfast, etc. For information call Becky Silverstein, 474-3551.

## Greenbelt Community Church



(United Church of Christ)  
 Hillside and Crescent Roads  
 Phone 474-6171 mornings  
 Church School for All Ages -  
 9:45 a.m.  
 Family Worship Service -  
 11 a.m.  
 Nursery provided at  
 2B Hillside  
 Rev. Sherry Taylor and  
 Rev. Harry Taylor co-pastors

### YOU DO NOT HAVE TO GO IT ALONE

You are invited to worship with us

## GREENBELT BAPTIST CHURCH

474-4212

Crescent &amp; Greenhill Roads

Bible Study for all ages (Sun.)	9:45 am
Worship services	11:00 am & 7:00 pm
Mid-week Prayer service (Wed.)	8:00 pm

For bus transportation, call Church office  
 8:30-12:30 weekdays.

## HERE COMES SANTA

Saturday, December 22

to the

Greenbelt Youth Center

via the

Greenbelt Volunteer Fire Dept. Co. 35

at 10 a.m. and will stay till 1 p.m.



Come talk with Santa and his helpers. If you like, you may participate in the Toy Exchange. Bring a toy; take a toy, or bring one for a needy child. Cartoons will be shown. Treats for the kids. Refreshments for Mom and Dad.

### OTHER WEEKEND ACTIVITIES

Friday and Saturday,  
 December 21 and 22  
 Have lights on at dusk

Saturday, December 22  
 Meet at Greenbelt Youth  
 Center at 7:30 p.m.

Sponsored by the Greenbelt Recreation Department, the above programs are open to the public free of charge. For further information, call 474-6878.

ANNUAL CHRISTMAS DECORATIONS CONTEST The Greenbelt Jaycees will view as many decorated city homes and apartments as possible. Judging will be done on outside decorations and visual displays.

CAROLING - Come with us to the Greenbelt Center Mall and serenade the shoppers with all of the old favorite holiday tunes. Refreshments will follow.

### St. John's Church

Episcopal

Baltimore Blvd. at Powder  
 Mill Rd., Beltsville

### Christmas Eve Services

December 24, 1979

8 p.m. and 10:30 p.m.

Holy Eucharist

### St. Andrew's Church

(Episcopal)

4508 College Ave., College Park  
 1 block East of Book Exchange

Christmas Eve, Dec. 24

Holy Eucharist 7:30 & 11 p.m.

Christmas Day, Dec. 25

Holy Eucharist 10:00 a.m.

The Rev. A. Moody Burt,  
 Rector



## The Pitkin Family

Joe

Joan

Jeff

Jennie

Jon

Jackie



## St. Hugh's Catholic Church

135 Crescent Road - 474-4322

Wishes everyone a Happy and Holy Christmas

### Mass Schedule:

December 24th - 6:00 P.M. (Children's Liturgy)  
 7:30 P.M.

Carols beginning at 11:30 P.M.  
 12:00 Midnight

December 25th - 8:00 A.M., 9:30 A.M.  
 11:00 A.M., 12:30 P.M.

### Confessions:

December 22nd - 11:00 A.M. to 12:00 Noon  
 4:00 P.M. to 5:00 P.M.

7:30 P.M. to 8:30 P.M.

December 24th - 3:00 P.M. to 5:00 P.M.

## "Oh, Come, All Ye Faithful"

Special services for your celebration of Christmas

### Children's Christmas Program

Sunday, December 23: 6:30 p.m.

The children of the congregation will present the Nativity Pageant and "Christ, the Christmas Dragon". Refreshments will be served after the program.

### Christmas Eve Candlelighting Service

Monday, December 24: 10:00 p.m.

A service filled with congregational carolling, Scripture readings, anthems by the Jr. and Adult Choirs, and the traditional candlelighting ceremony.

A pre-service program of Christmas music arranged by Carole McDonnell and presented by members and friends of the congregation begins at 9:00 p.m.

### Christmas Festival Service

Tuesday, Christmas Day: 11:00 a.m.

A service celebrating the Nativity of our Lord. Special music by the Adult Choir. After opening the gifts, take time to remember the "Whys and wherefores" of Christmas.

A Gift of you: "What Everyone Should Know About Christmas"

## Holy Cross Lutheran Church

6905 Greenbelt Road

Sunday Services: 8:30 and 11:15 a.m. Sunday School: 9:50 a.m.  
 Edward H. Birner, Pastor Phone: 345-5111



# On GHI Budget Problems and Members' Comments

## Membership Meeting

Continued from page 1

seconded the motion for a 21.66 percent increase offered by treasurer James Foster. "We haven't been paying as we should. This co-op is a good deal even with a 22 percent increase."

"What we have postponed in the past has caught up with us," cautioned Jim Smith. "GHI has already cut costs and personnel from the budget."

"We have virtually no reserves!" Bobbi McCarthy pleaded with members to vote yes, "otherwise we'll have an astronomical increase next year. Our financial stability is in your hands tonight."

Joe Dalis couldn't see any way out of approving the full amount since "the increased cost of oil and electricity alone amount to over 19.5 percent." He called for a new heating system in which "each unit would pay its own heat and hot water."

"This is a bitter pill to swallow," said Charles Schwan, "but I hope we would have the courage to swallow it."

Others responded to points raised. Volk explained that because GHI had expected to begin paying back the rehab loan this year, the funds collected could not have been put into a time-restricted high-interest savings account. "We are getting the highest interest possible under the circumstances," he said.

Janet James, who as a board member several years ago had attended area housing cooperative meetings, related the amazed reactions of others to GHI's single manager. "It is impossible, they said, for one man to manage 1,600 units without killing himself. The rule of thumb is no more than 500 units per manager."

Margaret Hogensen took exception to the charge that the board had rubber-stamped an inflated budget: "We did work on it and we argued hotly!" (The board met on the budget all through November and early December.)

Ed James, GHI's newest board member, though, thought otherwise. The board, he charged, gave "very superficial treatment of the budget. We need to go over the budget, this time in detail, and come back to the membership in January" to ask again, but for less of an increase.

Leading to the only real brouhaha of the evening, James then called for adjournment, a motion he said took precedence over the motion on the floor and was not debatable. While Volk waited for the parliamentarian to look through Roberts Rules of Order, Mat Amberg argued against the motion. He insisted that members had come prepared to vote on the increase and should be allowed to do so. In the end the members agreed with Amberg and voted down the motion to adjourn and then accepted Martin Holly's call for the question.

Bill Mayhew's comment: "We came here not to be convinced, but to convince," was greeted with cheers of "All Right!" No one felt any need to verify the numbers in the vote: 186 to 114; it was a clear defeat for the board. Those who voted "no" applauded their success and could be identified later by their happy smiles. They had won the evening.

Not many were interested in hearing about plans for changing the old antiquated heating system.

## Board Agonizes

Continued from page 1

create member dissatisfaction." He noted that those at the end of the heating lines will find that using 110° water is like taking a cold shower.

Members of the board toyed with proposals 2 and 3, looking for what effect each action might have. But by 11:30 they found themselves no nearer to deciding even what basic approach to take—go back to the membership and ask for more money or stick to 10 percent. While most liked alternative 2, they felt it was both impractical and improper to count on having a new heating system installed and operating within nine months. But changing the heating system as quickly as possible is likely to be a central part of whatever plan is adopted.

### Heating Conversion

Director Margaret Hogensen moved to adopt alternative 2, but without the elimination of the resale inspector after Director Ed James had threatened management that it was politically motivated. "You'll have to deal with me personally," James said heatedly, if that person goes.

"Conversion of the heating system is so important, so major, let's not talk idly about it," said Director Bobbi McCarthy. She asked for a work session to make this decision.

Director Virginia Morydas replied "we've discussed this conversion for a year now. There is no need for a special meeting."

Director Jim Smith thought there were still some questions unanswered. "Are we satisfied, with the best projections of today, that electricity is the alternative of our choice?"

"You have to get a commitment from the membership," Charles Schwan reminded the board.

James suggested that all board members should attend the joint meeting on electric baseboard heating on Monday, December 17, that was being held by the Long Range Planning Committee and the Engineering and Maintenance Committee. Hogensen agreed and withdrew her motion.

Member Bill Feller said he agreed with some of the proposals in alternative 3, but wanted administrative personnel cut; he mentioned the member relations person and the assistant comptroller. He read his suggestions for further cuts: electrical heavy-ups should be charged to individual members and the grounds crew should be eliminated—CETA employees could be hired to shovel snow and now grass. He said members had had "no objections to the rehab charges

(\$130,600), members want to keep paying those charges." He said a raise of 15 percent in monthly operating expenses, instead of the proposed 21.66 percent would have been reasonable. "The members did not want you to go (down) to 10 percent," he insisted. The board should return to the members in one to three months to ask for another raise, he suggested.

James called for implementation of alternative 2. He wanted unnecessary trucks to be sold. He asked the engineer for the resale value of the radiators, copper piping and boilers when the corporation converts to electric heat. Staff engineer, Ove Konsted cautioned that the "quarter of a million dollars worth of equipment would be 2 or 3 years down the road. You can't take it out and sell it now. The only savings from the trucks would be gasoline."

Jim Smith took exception to some of the things said or implied about the staff at the special meeting. "They were criticized for things that don't get done (and at the same time said we) need better management services. The person who said she couldn't afford to stay in GHI received many expressions of sympathy. But what she needs is more staff assistance on Section 8 housing assistance. Our members need more help than in the early days of the corporation. The idea that we can eliminate staff, just isn't so. It is easy to sit here and talk about eliminating grounds crew, but at the first snow, members will be in here asking why we're doing no snow removal. We cannot have wholesale firings and still maintain viability."

It is likely, however, that the board will decide to make further cuts in staff—most of them in the heating department. "But if we do that," said Hogensen, "Let's make sure we keep our best employees."

Smith then proposed the board develop "within the next seven days a 10 percent budget and do this in a posture that would not disrupt the management of the corporation until we can go back to the membership and attempt to get a realistic increase. We need to be a reasonable employer."

Schwan agreed with Smith: "These are extremely difficult choices, none are attractive, but unless they add up to \$428,700, the board has not met the membership directive."

"We have until the 30th to pass the budget," Morydas said, calling for a meeting at which the board would go over the budget item by item. We're stuck, we have to go to 10 percent."

## GHI Energy Conservation

A paper entitled "Each GHI Member Can Help to Conserve Energy" was available for all who attended the Special Membership Meeting last Wednesday. If you did not pick up a copy please get one from the Coordinator of Member Services (474-5566). There is one important correction, under item 5. The last line should read:

Turn key slowly in the vent until all the air escapes and water starts to dribble out.

During the recent budget meetings and hearings some members expressed concern about their units being too hot. There are several reasons why this can happen. Some of these we cannot control. For example, if the weather changes from cold to warm, the exiting hot water will still be in your heating system even though it is not needed. Another reason your unit may be too warm is that someone on the same heating line requires additional heat for medical reasons. GHI needs to accommodate such needs on the part of our members.

The above conditions are beyond each individual's control. However, it is also possible for an individual's unit to be too hot because either GHI has the heating plant thermostat set too high or the members have their radiators turned on too far. GHI is continuing to set the thermostats down, attempting to reach the lowest reasonable level for each heating plant. On the other hand, members may be using too much heat. As hot water travels to the end of a heating line, its temperature will drop. More heat is available to the first unit than to the last unit on a heating line. This is why it is so important that each member keep the radiators turned as low as possible. If you use too much heat, later members will not be warm enough and GHI will have to turn up the thermostats and use more oil.

Now that the membership has voted not to consider an increase in fee greater than 10% for 1980, it is extremely important that the members be equally careful in their personal use of GHI resources. Close out all drafts, turn the radiators down as far as possible, use as little hot water as you can, and carefully consider all other methods you can use to conserve energy. For the first time since the formation of our cooperative, we are financially vulnerable.

Wayne Williams,  
Vice President,  
Board of Directors

## Examine Budget Carefully

To the Editor:

One of the things many of my friends in Greenbelt hold against me, as does the gentleman who thinks I am a "rabble rouser," is that I do not believe in the sanctity of the co-op. It does not take the place of God for me.

I believe that a cooperative is formed to serve the people who formed it, in our case the homeowners, not the other way round. If it is managed efficiently, as a business, then we, the members, benefit, but if management is inefficient and wasteful, then our investment is a liability.

Now consider what I said at the budget meeting. I acknowledged the inevitability of high oil prices and our dependence on oil until we convert to some other type of heat, but I asked that all items on the budget be examined more carefully with TRIM in mind. You and I must demand

a justification in terms of service and cost for every item on the budget. Do we need 20 or more people on the heating staff, do we need a highly paid public relations officer as well as a social service worker to scan applicants for assistance? We want to know why so many vehicles and heavy equipment are needed. We want to know why such a large budget for ground maintenance. We want to see more efficient means of inventory and distribution. Is that so unreasonable?

Workers and staff as far as possible should be GHI homeowners, who have the interest of the organization at heart because waste is money out of their pockets. The workers who live here and are employed by GHI want to see efficient management and have been the source from which I have received knowledge of the waste. Hints from these people led to uncovering the ground maintenance scandal which Mr. Conrad and I revealed.

For this the sanctimonious co-operators call me "rabble rouser" and by implication you who support me, rabble. This because we resent being ripped off year after year for the purposes of building an empire called GHI. The more inflated the organization becomes, the more power and prestige the top echelon has and none of them are members of this cooperative. . . .

You, the members, are better informed now because some of us speak out. We need an organization of frame home owners to protect our interests, and masonry home owners likewise. Separate organizations because our problems are different and our budgets separate, but working together for our combined interests and to study and update the bylaws under which GHI operates. We need to charge dues out of which we can engage a lawyer as skillful in protecting our rights as Mr. Ginsberg is in protecting management and the corporation.

Don't think you can relax, fellow members, after your victory Wednesday night. As I write this a meeting is going on between our treasurer and the future manager to consider ways in which to meet 1980 needs on a 10% increase. Four methods are suggested: No. 1, refinancing of capital improvement loans which would simply project the deficit to some future date when in order to meet the payments on these loans we will be forced to accept larger increases; No. 2 would necessitate conversion to individual heating by October 1980, which certainly should be done anyway; No. 3, staff and other deductions. This should be done. However, I object to laying off GHI members who have been on our payroll and served us well instead of new "outsiders." If an inspector must be dropped, let's keep our own. I understand they are considering combining Mr. Mogel's position with Miss Ciccone's. Mr. Mogel is a GHI member and has longevity. Let Board and Management know your feelings about this.

Proposal No. 4 would come back to the membership for an additional 4% increase over the 10%, to ease some of the cuts in proposal No. 3.

A combination of No. 2 and No. 3 should be considered and if, after all they can possibly cut back has been accomplished, the budget is still in deficit, then come back to the membership with proposal No. 4.

Bettie G. Denson

# ATTENTION!

## GHI Members

Due to late adoption of the Budget

Letters Announcing

1980 Monthly Charges

Will Be Mailed Near

The End of December



## Not Facing Realities

To the Editor:

On Wednesday night, December 12, the GHI membership refused to approve a proposed 1980 budget which would have required a 21% increase in membership charges. This is most regrettable as it will force the corporation to limp along within a 10% increase in operating charges. I submit that we are not facing the realities of what it costs to operate our co-operative. The villain in the budget, fuel oil costs, was there for all to see. Of the proposed increase of 21.66%, \$714,662 or 19.44% was for fuel oil to heat our homes. This cost for fuel oil will not go away by being voted down.

In the discussion before the voting, many half truths, naive statements and some falsehoods were made. I submit that it was a "bare bones" budget that the membership was asked to approve. In answer to the charge that the board accepted management figures without question, I am aware that the board met on each Tuesday in November, questioned management figures and sought ways to reduce the proposed 1980 budget. Their conclusion was that it would be financially unsound to try to operate on less. The budget did not address the recovery of the approximately \$200,000 overrun for fuel oil costs in the 1978 and 1979 budgets which must be paid sometime in the future. Our reserves, contingency and replacement continue to erode, and are in a deplorable state making it more difficult to meet emergencies in the future.

The board must reduce the budget by \$428,700 to be within the increase allowed under our bylaws. It will be done, but at what a cost in reduced services to the membership, in the "putting off" of needed maintenance, in increasing our long-term indebtedness, in disgruntled employees, only the New Year will reveal. To put it bluntly, a 10% increase in operating charges does not meet the cost of operating Greenbelt Homes and we are only postponing the day of reckoning.

James R. Foster  
Treasurer  
Greenbelt Homes, Inc.

## What Do They Do?

To the Editor:

I just had the most remarkable question asked me about Greenbelt Homes Inc. "What do 'they' do with the money they collect for heating the four months we don't have heat?" It's like saying, "What do 'they' do with the money collected for taxes the 11 months that we are not making a tax payment?"

All of GHI costs of operation are spread over a 12-month period regardless of when they are spent. As much is deemed prudent is drawing interest until the time it is needed to pay bills. GHI has had at least four Certified Public Accounting firms going over our books since I have lived here, 14 years. All of them have said that the money collected for the members was spent for the purpose for which it was collected. I'm afraid amateur, armchair accountants aren't competent to instruct GHI members as to the financial affairs of the corporation, although goodness knows enough of them try.

In the matter of the overbuying of the fertilizer, we can't really believe the stories on that until the committee appointed to look into it reports. Even if the worst were true, it is the first time in 30 years such a thing has happened. Such a fuss! It would be about fertilizer!!!

Janet M. James

## A Dangerous Thing

To the Editor:

At the Wednesday evening GHI special membership meeting concerning an increase of 21.66 percent in our monthly charges, that proposal was voted down.

However, after the vote had been taken and while Ben Elkins was talking concerning his feelings, many of the members got up and left.

Folks, that is a dangerous thing to do before the meeting is adjourned! After Elkins sat down, James Smith took the microphone and made a motion that the monthly payments be increased 18 percent!

The parliamentarian and the president, Donald Volk, ruled that the motion was out of order. But when a young man I did not recognize appealed that ruling, the membership had to vote to uphold the president's decision, which was done.

At that time someone moved that the meeting be adjourned. The motion carried almost unan-

Page 4

## Long Distance Races

On Saturday, December 22, a 1.75 mile race will start at 9:15 a.m. and a 10-mile and 20-mile race will start at 10 a.m. from Braden Field.

These races are sponsored by the D.C. Road Runners Club and the Greenbelt Recreation Department.

Registration starts at 8:30 a.m. and there is a nominal fee.

## At the Library

Wednesday, December 26—Holiday Film Program For The Whole Family. 2:30 p.m. Mole And The Christmas Tree plus The Cosmic Christmas, 11 Crescent Road, 345-5800.

imously.

Please be sure you move to adjourn the meeting before you leave—you could wake up the next morning being outvoted on some major issue. It has happened.

Peg Wainscott

# KASH INC. REALTORS

## COMPUTERIZED LISTING SERVICE

We Buy Houses — All Cash



**YES YOU CAN:** still buy a 3 bedroom, 2 full bath, lovely rambler for under \$62,500 VA appraised. Owner will pay most of closing costs. Featuring large rec. room, cen-OSP and nice treed yard. You can buy on FHA terms with as little as \$300 down payment or no down payment on VA terms. Call us now to see this fine home. 345-2151.



**BELTSVILLE BEAUTY!!!** Just reduced for fast sale. This 4 bedroom, 2 full bath rambler with large rec room won't last long. Featuring central air conditioning, storm windows and doors, wall-to-wall carpet, washer, dryer, dishwasher, and fenced yard. FHA or no down VA terms at a total price of only \$62,950. Sounds good? It is, call 345-2151.



**LARGE HOME IN COLLEGE PARK:** Excellent location and comes with 5 bedrms, 2 full baths, formal din-rm. Could be 2 sep. units. Rec-room and garage also.

# Ianham montessori school internationale

6715 cipriano road

Applications are now being accepted for Spring Semester  
Pre-school and elementary.

Full and Half Day programs available.

Day Care is provided before and after school hours.

Center opens 7 a.m., closes 6 p.m.

For additional information call 552-2400

Approved by:

Maryland State Department of Education

Prince Georges County Health Department

Association Montessori Internationale

We accept children regardless of race, creed, or national origin

PLANNING ON BUYING OR SELLING?

LET KASH REALTOR HELP

YOUR FAMILY

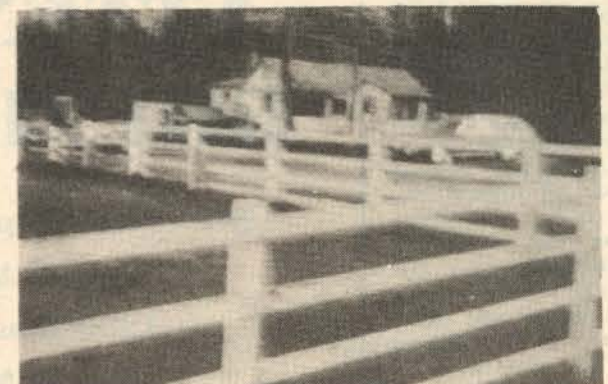
345-2151



**8½% V.A. LOAN: ASSUME** this VA loan and your total payment is only \$336. per month. 4 bedrm., full basement. \$46,950.



**HUGE ADDITION:** Makes this home ideal for the growing family. Washer, dryer, w/w carpet & fenced yard. \$300. down FHA or no down VA.



**FARMETTE:** 2 acre tract, white ranch fence, barn, out-building, 4 bedrm., 2 baths, sep. din. rm., modern TS kit., fireplace, lg. patio, & pool. Only \$79,500, call now.



Mickey and Marcie McGee entertained an enthusiastic audience of 75 at the Cultural Arts Center's Open House, December 8. The McGee sisters, long-time Greenbelt residents, sang Irish ballads they had learned while visiting Ireland last summer. — Photo by Scott Anderson

*Warmest Holiday Greetings  
to our Greenbelt friends and neighbors  
The Weidenfeld Family  
Gil, Muriel, Sharon & Ellen*



**Hair Fair**

**CHRISTMAS SPECIAL**

All Permanent Waves at  
One Low Price of \$15.00 plus  
\$5.00 for Haircut  
(long hair extra)

9250 Springhill Lane  
Greenbelt, Md. 20770  
Springhill Lake Apts. **345-8686**  
(Good thru December)



For Insurance Call:  
**Don W. Taulelle**  
9200 Edmonston Rd.  
Greenbelt, Md. 20770  
**474-5007**  
Like a good neighbor,  
State Farm is there.  
State Farm Insurance Co's.  
Home Offices: Bloomington, Ill.



The Howard Savage's  
extend to all their  
friends in Greenbelt  
their Best Wishes  
for a  
**Happy Holiday Season**

WE PRESENT A

# COFFEE HOUSE

for those of us who would like to see a

## Greenbelt Cultural Arts Center

in the old theater

### Saturday December 22

8 p.m.

featuring

*Wizard - humor and poetry*

*Angie Miller - guitarist*

*Songwriter*

Help make this program more than a one-day stand by contributing now! We have only 11 days to raise the necessary funds to meet lease deadline of January 1, 1980. Don't let this opportunity for your involvement slip away before it's too late for all of us. Let's move now to bring our community closer together by bringing life back into the Center!

**6%** **6.27%**

Per Annum paid on  
passbook accounts  
Compounded daily

Annual Yield

Certificate Accounts-\$1000 minimum deposit required

- 3 month - 6.25% per annum; 6.54% annual yield
- 6 months - 6.50% per annum; 6.81% annual yield
- 12 months - 7.00% per annum; 7.35% annual yield
- 48 months - 7.50% per annum; 7.90% annual yield
- 96 months - 8.00% per annum; 8.45% annual yield

Note: A Substantial interest penalty is required by law for early withdrawals.

Money Market Certificate - \$10,000 minimum deposit, 182 day term  
Call for weekly rate.



**TWIN PINES**

**SAVINGS & LOAN ASSOCIATION**



Wednesday & Thursday 9-6  
Friday 9-8  
Saturday 9-12  
Mon., Dec. 24 & 31 9-12

CLOSED CHRISTMAS  
& NEW YEAR'S DAY

**474-6900**

Member MSSIC



**PRICES EFFECTIVE**  
**DEC. 19, 1979**  
**THRU**  
**DEC. 24, 1979**  
 QUANTITY RIGHTS RESERVED



# CO-OP

**CONSUMER SUPERMARKETS**  
 A DIVISION OF  
**GREENBELT CO-OPERATIVE**

## Double Savings Coupons!

ON ALL MANUFACTURERS

A Fine Selection Of Fruited Hams -  
 Country Hams & Holiday Poultry

**ESSKAY "LOW SALT" COOKED HAM**  
 (NO SLICES REMOVED)  
 FULL SHANK HALF **\$1.26**  
 LB  
 FULL BUTT HALF **\$1.26**  
 LB  
 WHOLE 16/19-LB AVG. **\$1.26**  
 LB

**STANDING RIB ROAST**  
 ANY SIZE  
 CHOICE **\$2.48**  
 LB

**FRESH HAMS**  
 WHOLE or SHANK HALF **\$1.48**  
 LB  
 BUTT HALF **\$1.58**  
 LB

**WHOLE - 14-LB AVG. PORK LOIN**  
**\$1.30**  
 LB



**BONUS VALUE THIS WEEK**

SAVE \$1.00 No Purchase Necessary No Limit  
 Covered Butter Dish **\$4.99**

**FROM LOCAL FARMS FRESH YOUNG TOM TURKEYS**  
 18/24-LB AVG. **89¢**  
 LB  
 10/14-LB AVG HEN TURKEYS **99¢**  
 LB

**BONELESS SIRLOIN TIP ROAST**  
**\$2.07**  
 LB  
 SIRLOIN TIP STEAK **\$2.65**  
 LB

**PATRICK CUDAHY CANNED HAM**  
**\$5.50**  
 3-LB CAN  
 5-LB CANNED HAM **\$8.76**

**"PRICE BLASTER" COUPON**  
 This Week's Feature  
**Summer Sun STONWARE Cup**  
**49¢** EACH  
 With Coupon And Minimum \$7.50 Purchase  
 LIMIT ONE COUPON PER SHOPPING FAMILY  
 GOOD DEC. 19 THRU DEC. 24, 1979

**"BUY BONELESS BEEF & BULK CHEESE FOR CHRISTMAS GIFTS"**  
 5-LB HOFFMAN - Your Choice  
 Cheese & Onion Or Cheese & Salami Loaves **\$2.56**  
 LB  
 WHOLE Boneless N.Y. Strips **\$3.98**  
 LB  
 BEEF Boneless Del Monico **\$4.50**  
 LB  
 BEEF Boneless Tenderloin **\$4.20**  
 LB  
 3-LB VERMONT Black Cheddar Cheese **\$3.36**  
 LB  
 3-LB WINE CHEDDAR **\$2.87**  
 LB  
 5-LB LUCILLE FARMS MOZZARELLA CHEESE **\$2.65**  
 LB  
 2-LB HERKIMER CHEESE NUT LOG **\$3.83**  
 LB  
 4-LB HEIM MUENSTER CHEESE **\$2.46**  
 LB

LOIN Pork Roast **\$1.26**  
 RIB HALF LB  
 LOIN HALF **\$1.37**  
 LB  
 CO-OP & ESSKAY S.C. Esskay Sliced Bacon **\$1.31**  
 1-LB VAC PK  
 BATH Link Pork Sausage **70¢**  
 8-OZ PKG  
 FROZEN Pork Sausage Meat **77¢**  
 1-LB ROLL  
 FROZEN Lobster Egg Roll **3 for \$1**  
 30-CT  
 HORS D'OEUVRES - MEAT & SERVE Frozen Shrimp Rolls **\$5.98**  
 3-OZ TRAY

**DEL MONTE FRUIT COCKTAIL**  
**79¢**  
 30-OZ CAN

**CO-OP MAYONNAISE**  
**99¢**  
 32-OZ JAR

**HEAVY DUTY REYNOLDS FOIL**  
**68¢**  
 18" x 25' ROLL

**BIG BONUS COUPON**  
 GOOD DEC. 19 THRU DEC. 24, 1979  
**LIPTON TEA BAGS**  
 100-CT **\$1.39**  
 8-OZ PKG  
 WITHOUT COUPON \$1.69  
 With This Coupon Excluding Milk, Cigarettes & This Item Limit One Per Family-Good Only At

CO-OP JUICE - PUNCH, ORANGE, GRAPE  
**Fruit Drinks** 46-OZ CAN **48¢**  
**MUSSELMAN'S Applesauce** 50-OZ JAR **97¢**

CO-OP WHOLE OR STRAINED  
**Cranberry Sce.** 3 1-LB CANS **\$1**  
**DEL MONTE CREAM OR WHOLE KERNEL Golden Corn** 3 17-OZ CANS **\$1**

**DARK & LIGHT BROWN OR 10X Domino Sugar** 1-LB BOX **39¢**  
 IN MONTGOMERY COUNTY \$1.49  
**Pepsi** REG. OR DIET 6 PAK 16-OZ N.R. BTLs **\$1.37**

PLANTERS **Salted Peanuts** 12-OZ CAN **\$1.19**

## Merry Christmas

CO-OP **Salad Mustard** 9-OZ JAR **33¢**  
 SUGAR & SPICE **Ham Glaze** 9 1/2-OZ JAR **59¢**  
 CO-OP **Grape Jelly** 2-LB JAR **96¢**  
 RED & WHITE **Stuffed Olives** 5 1/4-OZ PAIL **68¢**  
 CO-OP **Whole Dill Pickles** 48-OZ JAR **\$1.34**

DEL MONTE CHUNK, CRUSHED, SLICED **Pineapples** JUICE PACK 15 1/2-OZ CAN **55¢**  
 HALLWOOD **Cut Yams** 46-OZ CAN **88¢**  
 CO-OP **Tomato Soup** 10 1/2-OZ CAN **25¢**  
 BETTY CROCKER **Pie Crust Mix** 3 11-OZ PKGS **\$1**  
 CO-OP PLASTIC **Sandwich Bags** 150-CT BOX **84¢**

CO-OP **Trash Bags** 10-CT PKG **\$1.18**  
 CO-OP ASST. ECONOMY **Paper Napkins** 140-CT PKG **68¢**  
 KRAFT MINI **Marshmallows** 10 1/2-OZ BAG **34¢**  
**HEALTH & BEAUTY AIDS**  
 COLD MEDICINE **Ny-Quil** 6-OZ BTL **\$1.98**  
 LIQUID - DRY, REG., OILY **Breck Shampoo** 7-OZ BTL **\$1.18**

**HOUSEWARES & NON FOODS**  
 EVEREADY **Batteries** PKG OF 4 **\$1.49**  
 35 BULB - UL APPROVED **Midget Life Set** SET **\$2.99**  
 32" x 40" SIZE **Sparktux Mats** PKG **89¢**  
 TAPER **Bayberry Candles** 2 3-CT PKGS **99¢**

**"Quality & Variety Is The Best Value"**  
**ORANGES**  
 CALIF. NAVELS **10 88 SIZE FOR 99¢**

RED INDIAN RIVER **Grapefruit** 4 40 SIZE FOR **\$1**  
 FLA. **Tangerines** 12 150 SIZE FOR **\$1**  
 RED OR GOLDEN DELICIOUS **Apples** WESTERN SWEET **48¢**  
 LB  
**Anjou Pears** **48¢**  
 LB

CALIF. **PASCAL CELERY** **38¢**  
 Stalk

RED RIPE **Tomatoes** **38¢**  
 LB  
 FRESH **Brussel Sprouts** **88¢**  
 LB  
 YELLOW **Cooking Onions** **10¢**  
 LB  
 NORTH CAROLINA **Golden Yams** **25¢**  
 LB

**BIRDS EYE COOL WHIP**  
**55¢**  
 8-OZ CONT

**LAND O' LAKES BUTTER**  
**\$1.69**  
 1-LB QTRS

**"EVERYDAY LOW PRICES"**  
 MRS. PAUL'S **Sweet Potatoes** 12-OZ PKG **67¢**  
 CO-OP FORDHOOK **Lima Beans** 24-OZ PKG **\$1.20**  
 CO-OP **Brussel Sprouts** 20-OZ PKG **\$1.18**  
 LOUIS SHERRY NATURAL **Ice Cream** HALF GAL **\$1.97**

**"EVERYDAY LOW PRICES"**  
 PILLSBURY **Crescent Rolls** 8-OZ TUBE **66¢**  
 KRAFT WHIPPED 3 VARIETIES **Cream Cheese** 8-OZ PKG **88¢**  
 KRAFT **Fruit Salad** 32-OZ JAR **\$1.89**  
 SEALTEST **Sour Cream** 16-OZ CONT **85¢**



# CLASSIFIED ADS

Ads must be prepaid and submitted in writing to:

- The News Review office in the basement of 15 Parkway between 8 and 10 p.m. on the Tuesday preceding publication. The office will be closed Mon., Dec. 24 & 31, but will be open Tues., Dec. 25 & Jan. 1.
  - The Twin Pines office (News Review drop box). Deadline is 11 a.m. Monday for the next 2 weeks. (Put payment in envelope with ad. Do not pay Twin Pines).
  - P.O. Box 68, Greenbelt, Md. 20770. Must be received by Tuesday.
- RATES:** \$1.50 minimum for the first ten words. 10c each additional word. No charge for listing items that are found.
- BOXED ADS** - \$3.60 minimum for a 1½ inch one column box. \$1.20 each additional half inch. Maximum ad for this section is three inches.

**CALDWELL'S WASHER SERVICE.** All makes expertly repaired. Authorized Whirlpool dealer. GR-4-5515.

**PIANO TUNING AND REPAIR** - Expert and Reliable Piano Service to Greenbelt since 1960. Benjamin Berkofsky 474-6894.

(MARIE'S POODLE GROOMING) Holidays are coming. Make your appointments. Call 474-3219.

**TYPEWRITER REPAIR** - Electric, standard, and portable. Call 474-0594.

**PIANO LESSONS:** Peabody Conservatory Graduate. Beginners - Advanced. 490-8208.

**FOUND** - If your pet is lost, call the animal warden 474-7200.

**DUE TO INFLATION** typing rates have increased to 70c per sheet and 20c per carbon. Still very reasonable, though. Call 345-9162 between 9 a.m. and 9 p.m.

**PAINTING** - Interior, exterior, 20 yrs. exp. Do my own work. Call Bob Neal, 776-5461.

**SUZUKI VIOLIN CLASS** for 4 and 5 yr. olds, in Greenbelt, starting Saturday, Jan. 5, 1980. Call 474-1047 for further information.

Reasonable All Work Rates Guaranteed  
Odd Jobs a Specialty

**HOME & YARD IMPROVEMENT SERVICES**

Everything for your home or yard - No job too small

Free estimates

Bob Wilhide 345-8368

**APPLIANCE REPAIR**, large and small. Sewing machines. Call Dan, 474-7379.

**RIDE WANTED** daily from Greenbelt to National Naval Medical Center, Bethesda or vicinity (NIH, etc.). Will pay. Call 345-2580 after 6 p.m.

1964 CHEV. P.U. - Engine needs work. Good for parts. 441-8960.

**SITTER WANTED** - Parent out of town Jan. 6th, 7th, & 8th and Jan. 25th, 26th, & 27th. Also need sitter for occasional evenings. Call 345-7917 after 6:30 p.m.



**F. Johnson of In-Home TV Service**

visits Greenbelt 4 days each week

- Always estimates within 10%
- Always calls before visiting
- Works some nights & weekends
- Top rated with consumer groups
- Prompt, fair - 18 yrs. experience - He listens!
- Most repairs done in your home

Master Charge, VISA accepted  
CALL 588-4166 IN DAYTIMES  
565-0001 Evenings & Weekends

**POOL TABLE SHUFFLEBOARD TABLE**

**FOR SALE**

Great X-Mas Gift

4 yrs. old

Call 441-1096 betw. 1-6 p.m.

**Photography**

By

J.

PORTRAITS

ADVERTISING

INSURANCE

J. Henson, Photographer  
441-9231

2 PIECE COUCH - \$35.00. 441-8960.

**HOUSE TO SHARE** - Female wanted to share house near bus & metro. Washer/dryer. \$112.50 & utilities. Available immediately. Call 474-8864.

**CARPOOL** - Greenbelt to Dupont Circle; leave 8 a.m., return 5 p.m. daily; have garage space, will share driving; call Joe at 828-0497 or 345-5671.

**FOR SALE:** Student violin, like new. Long dresser with mirrors, hockey skates, figure skates. 474-1011.

**BABYSIT NEW YEAR'S EVE:** I will provide child care in my home—all ages. 345-1876.

**Need**

**Bathroom Remodeled?**

CALL JOHN  
345-7497

Specializing in Ceramic Tile

**TWO SNOW TIRES**, 75 x 14, good tread, \$30 for both (mounted on 5-hole Plymouth wheels). 474-6338.

**SEASON'S GREETINGS!** Announcing my retirement from income tax preparation. Thank you. William Feller.

**LOVING, PATIENT, RELIABLE** babysitter wanted for 4-month old girl, M-F, 8 a.m. to 5 p.m. while mother works. Your home or mine. Must have a genuine interest in and affection for infants. Call Joan evenings, 345-7807.

**FREE PUPPIES** - Part spaniel, part shepherd. Call 937-5520 or 474-5276.

**Recreation Review**

**Volleyball and Roller Skating**  
Volleyball and roller skating activities held in the Center Elementary School gym, will be cancelled until school resumes on Wednesday, January 2, 1980.

**Winter Coffee House**

Since weather conditions are not conducive to chatting in the Center Mall, join the group in the Youth Center Conference Room Sunday afternoons from 1:30 p.m.-4:30 p.m. Open to adults over 18 years this informal Coffee House Drop-In will give you the opportunity to meet and talk with old friends/neighbors and cultivate new acquaintances. Stop by, enjoy that old 'game' called conversation.

**Holiday Hours**

Hours will be extended to the public at Greenbelt's Recreation Centers for the season's holidays. Facilities will be open as follows:

- Sat., Dec. 22, 9 a.m.-11 p.m.;
- Sun., Dec. 23, 1 p.m.-10 p.m.;
- Mon., Dec. 24, 12 noon-6 p.m.;
- Tues-Fri., Dec. 25-28, 12 noon-10 p.m.;
- Sat., Dec. 29, 9 a.m.-11 p.m.;
- Sun., Dec. 30, 1 p.m. - 10 p.m.;
- Mon. Dec. 31, 12 noon - 6 p.m.;
- Tues., Jan. 1, 12 noon-10 p.m.

**Summer Employ'm't For College Students**

The Maryland Department of Transportation will hire about 150 college students for summer jobs in highway maintenance, construction inspection, office work, and drafting in 1980.

To qualify, a student must be a Maryland resident who is or will attend college in the fall. Students may apply for the jobs between December 26 and January 25, 1980, at Maryland State Employment Service offices throughout the state and at the Baltimore Urban League office in the Mondawmin Mall in Baltimore.

Most of the job openings are in Baltimore, Baltimore County and Anne Arundel County, but there are some positions available in every county. Wages for most jobs will be \$3.20-\$3.40 an hour.

**RON BORGWARDT**

10212 Baltimore Blvd.  
College Park, Md. 20740  
(on U.S. 1 at the Beltway)  
474-8400

"See me for car, home, life, health and business insurance."



State Farm Insurance Companies  
Home Office: Bloomington, Illinois

We Wish

All Our Friends

In Greenbelt

A Joyful Holiday Season

George Loutsch Family

**SPECIAL**

\$5.00 off on all Repair Jobs With This Ad  
CALL 441-9116

**Edgewood TV & Audio**

Dependable Guaranteed Service  
4932 EDGEWOOD RD.  
COLLEGE PARK, MD. 20740  
Licensed & Bonded

The Department's annual Holiday Party for all of the School Safety Patrols was held today from 11:30 a.m. until 2 p.m.

Corporal Thomas M. Ceccarelli completed a Homicide Investigation course conducted by the University of Maryland.

Several shoplifting arrests were made last week. One adult and three juveniles were arrested for shoplifting at four different stores at the Beltway Plaza Mall.

**CITY NOTES**

Benches were repaired at the Center underpass. Rip-rap was put in at the stream at the Springhill Lake Golf Course.

Base was repaired on Ridge Road and pedestrian walkways marked at Green Ridge House. An earthen berm along the top of the hill by the picnic area of the Lake Park was built. Wood chips were placed on both sides of the berm for erosion control. This is part of an ongoing project to eliminate erosion at the Lake Park.

Blacktop was poured and the backboard was installed at the basketball court to the rear of 2 Eastway. The court is finished, however, grass seed still has to be placed around the area.

The surface of the bike path on Lakecrest Drive at Greenbelt Road has been completed. The pedestrian crossing at Green Ridge House was finished and the old lines were removed.

Potholes were repaired throughout the city. The utility lines have been marked at the lake so a drain can be installed around the bandstand to pick up subsurface drainage.

Ridge, is the proud grandmother. A speedy recovery to Holly Geller, 117 Northway, who is recuperating from knee surgery.

**COLLEGE PARK BICYCLES**

4360 Knox Rd.  
864-2211

10 SPEED BICYCLES FROM \$99.95  
MOTOCROSS BIKES 10% - 20% OFF  
ALL BIKES FULLY ASSEMBLED AND GUARANTEED  
\$10 holds any Bike until Christmas  
INDOOR EXERCISERS ON SALE  
\$20 TO \$350  
**GIFT IDEAS**



- Fantastic Business Opportunity.
- Save 10-50% Over What You're Now Paying at local food stores for Home Care Products.
- Tremendous Products & Service - Home Delivery (Save on Gas and Time)
- We've Got It All!

**AMWAY**

Get the **WHOLE STORY** - Call 441-1229

25 Hours a Day - 7 Days a Week

**GREENBELT HOMES, INC. EXTENDS**

**GREETINGS AND BEST WISHES FOR**

**THE HOLIDAY SEASON!**



## Holiday Tips for Shoppers

The Greenbelt Police Department reminds holiday shoppers of the following precautions:

Do not leave packages visible in your car. Please lock them in your trunk.

Do not place credit cards in your purse and leave your purse in your shopping cart.

Always keep your credit cards on your person!

Do not hold your money in your hand while standing at the checkout counter.

Do not make yourself a victim—carry your purse under your arm, not by the straps.

Lock your car when you get out of it, and look around for people looking into other people's cars.



*May the spirit and meaning of the holiday season be the guide to reconcile the differences that separate one individual from another, one group from another, one race from another and one country from another. May the spirit that is Greenbelt continue to be the guide to resolving the problems that beset us and to make our community a better place in which to live.*

*The City Council, the citizens who serve solicitously on the City's advisory boards and the employees of Greenbelt look forward to seeing you during the coming year, and pledge to continue working towards keeping Greenbelt the special place that it is.*

*We wish all a happy holiday season and a new year filled with peace, love, joy, hope, good health, achievement and happiness.*

## THE CITY OF GREENBELT, MARYLAND

### CITY COUNCIL

Gil Weidenfeld, Mayor  
Richard R. Pilski, Mayor Pro Tem  
Thomas X. White  
Richard J. Castaldi  
Charles F. Schwan, Jr.

### ADVISORY PLANNING BOARD

Donald Volk, Chairman  
Mary F. Clarke  
Ronald Colton  
Jeffrey R. Gallagher  
Frederick A. McCarthy  
Eileen Turner

### COMMUNITY RELATIONS ADVISORY BOARD

Darwin Beck, Chairman  
Rev. Edward H. Birner  
Alfred F. Cousin  
Katherine Keene  
Rev. Msgr. William O'Donnell  
Joanne Rossi Becker

### EMPLOYEE RELATIONS ADVISORY BOARD

Albert K. Herling, Chairman  
Hugh D. Jascourt  
Benjamin Rosenzweig

### BOARD OF ELECTIONS

Jule Churchill  
Joseph D. Compron  
John P. Gardes  
Betty Jane Moore  
Nathan Shinderman

### PARK AND RECREATION ADVISORY PLANNING BOARD

Ronald A. Ott, Chairman  
Antoinette M. Bram  
Rev. Kenneth C. Buker  
Donna Fluke  
Thomas V. Greer  
Joseph R. Greig  
Nancy Neupert  
J. Laurence Noel, Jr.  
Dial Silvers  
Wayne Spong  
Joanne M. Volk  
Joseph E. Wilkinson

### COUNCIL OF GOVERNMENTS CITIZENS ADVISORY COMMITTEES

Rhea Cohen  
Dr. Bernard Kessler  
James Cassels  
Nancy Spong  
William C. Brennan

### ADMINISTRATIVE

James K. Giese, City Manager  
Dennis E. Piendak, Assistant City Manager  
Emmett H. Nanna, City Solicitor  
Michael P. McLaughlin, Administrative Assistant

### Thomas E. Hauenstein,

Rehabilitation Loan Specialist  
Gudrun H. Mills, City Clerk  
Barbara Havekost, Administrative Assistant  
Dorothy Lauber, Secretary  
Pat Fitzenreiter, Office Assistant

### FINANCE

Zoltan Botykos, Accountant  
Dorothy Stair  
Linda Urso  
Helen Lee

### POLICE DEPARTMENT

William T. Lane, Chief  
John C. Krob, Lieutenant  
Marshall Zoellner, Lieutenant  
Ernest Brumley  
Thomas Ceccarelli  
Phillip R. Coombes  
James R. Craze  
Herbert L. Faulconer  
David Fulgham  
Kenneth Stair  
Ralph J. Cancelose  
Michael D. Craddock  
Mark DiPietro  
Thomas R. Justin  
David Kress  
John A. Lann  
James Danny Love  
Gregory Lynn  
Terrence M. McGrath  
Thomas Miskell  
Fred E. Murray  
Daniel P. O'Neil  
Michael Ricucci  
Charles W. Watkins  
Thelma Markley  
Katina Giles  
Cindy Lou McKnew  
Richard Riffe  
Linda Scarlata  
Theresa Schweiss  
Hyman Gerson  
Marc Siegel  
Robert Spencer

### PUBLIC WORKS DEPARTMENT

George E. Smith, Director  
J. Paul Williams, Assistant Director  
Dennis Doornekamp, Parks Superintendent  
Cindy French, Office Assistant  
Johnnie Allison, Jr.  
Joseph D. Aulisio  
Carl E. Bartholow, Jr.  
John W. Behrens  
Alfred Beymun  
Cecil Breeden  
Roy T. Brown  
Terence Burchick  
Ralph E. Diest II  
David Downs  
Adolphus Edwards, Jr.  
Kenneth R. Hall  
Daniel Himmelfarb

### Norman Lockerman, Jr.

Philip Johnson  
Joseph E. Lonesky  
Robert Lush  
Alfred L. Markell  
Hubert E. Michael  
Mark Miedzinski  
Richard L. Mills  
Norman Powell  
John W. Pyles  
Michael Rousseau  
Raymond Vitich, Jr.  
James P. Weiss  
Woodrow W. Wines

### GREENBELT CARES

Carol Leventhal, Director  
Johnnie Franklin

Barbara Lawson  
James Holmes  
Wendy Wexler

### RECREATION DEPARTMENT

Harry Irving, Director  
Harry James, Assistant Director  
George Rogala, Area Supervisor  
JoAnn C. Rowe, Recreation Assistant  
Janet Goldberg, Recreation Assistant  
Betty Lehman, Secretary  
Hazel Callahan, Office Assistant  
Katherine Adler  
Charles Backora, Jr.  
Kenneth J. Blue  
Linda Callahan  
Bonnie Carls  
David W. Clayton  
John DelHomme  
Amy L. Derin  
Theresa Dobbin  
Anthony Dockett  
Mildred DonBullian  
Betty Dougherty  
Ronald P. Ernst  
Valerie Fisher  
Craig Fitzenreiter  
Kevin Foster  
David J. C. Grego  
David Hussey  
Carol Hrycaj  
Kathleen James  
Eugene Kellaheer, Jr.  
Robert L. Kent  
Lynn Labukas  
David Lehman  
Terry E. Mangum  
Anne McFarland  
Roger Mowery  
Joseph Niland  
Margaret O'Hagan  
Elizabeth Osborne  
Scott Powell  
Betty Quigley  
Arlis Sowers  
Susan S. Taylor  
Charles Tompkins  
Raymond P. Treacy, Jr.  
Christine A. White

# Greenbelt Pizza-Sub Shop

Merry Christmas

FRIDAY & SATURDAY:

Thick Crust Pepperoni Pizza ..... \$3.25

SATURDAY:

Shock Steak ..... \$1.25

19th - 26th (Closed X-Mas Eve & X-Mas Day)

Coca-Cola, R.C. or Tahitian Treat (while they last) ... \$1.29/carton

Pepsi-Cola 16 oz. carton ..... \$1.35

2 liter Double-Cola, 7-Up or Dr. Pepper ..... 89c/bottle

107 CENTERWAY

474-4998

## LEGAL CLINIC of DOUGLAS I. MALCOM

Divorce, Uncont. 200.00  
Incorporation 200.00  
Simple Will 35.00  
Bankruptcy 225.00  
Adoption 200.00  
Guardianship 100.00  
Auto Accident 25%  
Hourly Rate \$ 35.00  
(Fees Exclude Costs)

**FREE INITIAL CONSULTATION**

Beltway Plaza  
Shopping Center  
Greenbelt, Md. 20770

474-8808

Call for appointment

## GREENBELT

### ONE BEDROOM DELIGHT

One bedroom "treehouse" apartment, light and airy, new wall to wall carpet. Unique decorative touches. Seller may help with financing!!! \$16,900.

### TWO BEDROOM DELICACY

SEEING IS BELIEVING!!! Gorgeous two bedroom townhome featuring remodeled kitchen, wall to wall carpet, washer, dryer, and air conditioners are just some of the many extras in this beautiful home. ENCHANTING PRICE, TOO! \$26,500.

### THREE BEDROOM FANTASY

That's just what you'll say when you see this three bedroom home, complete with new range with self cleaning ceramic top, washer and more enhancing extras!! Don't miss out!! \$25,000.

## BERWYN

### REFRESHING

to find all this in one home! 4 bedrooms, 2 baths, dining room, den, much more that can be all yours including 1/2 acre lot!! BEAUTIFUL COLONIAL.

Call 474-5700

**NYMAN REALTY INC.**

151 Centerway

