

Greenbelt News Review

AN INDEPENDENT NEWSPAPER

Volume 42, Number 4

GREENBELT, MARYLAND

T Thursday, December 14, 1978

Council Seeks Meeting with Postal Officials, Still Prefers Separation of Postal Facilities

by Leta Mach

After listening to both Advisory Planning Board (APB) and citizen concerns about the proposed Parkway post office site, the Greenbelt City Council asked for an early meeting with postal officials.

Council wants to discuss dividing post office functions into a full customer service facility in the Center, with a sorting facility at another site, and also to discuss an alternative site at Candy Cane City.

Learning that the Maryland National Capital Park and Planning Commission (MNCPPC) staff was to prepare its report on the Parkway site plan by December 12, with the MNCPPC board scheduled to take action on December 21, council decided to request a delay.

Chairman Donald Volk presented the APB report on the Parkway site, noting differences with the postal service's environmental assessment. Although the postal service projects a moderate or temporary detrimental effect on land use patterns, APB stressed the possible permanent effect on the commercial center and possible pressure for more commercial facilities on Parkway. APB also took exception to the postal service assessment that little or no damage caused by removal of trees, shrubs and other vegetation would occur.

APB questioned the postal service claim of beneficial accessibility and parking at the site. It also disagreed with the postal assessment of no effect on local employment, citing the possible effect on the commercial center and on indi-

viduals using the Parkway garages for business purposes.

Two Parkway residents, Carl Gregerson and Bill Wilkerson, spoke against the proposed site. Apartment residents had no vote on selling the GHI land to the post office, Gregerson noted. He presented a petition signed by Parkway residents. The facility, he said, would "deface and ruin the whole residential climate of the neighborhood." He also felt the location was not particularly convenient when the whole 20770 zip code area is considered. He endorsed the idea however, of keeping the facility in the Center.

"The old Greenbelt Center is a model of the Community Activity Center concept, with its central location for all community retail, service and public uses," Wilkerson reminded council. Such a concept, he said, is now encouraged by the county and planning commission, instead of having these facilities strung out along the highway.

"Had the correct procedure been followed in the site selection," he inquired, since it appears "the city was never asked to comment during the site selection process?" Another question concerned the level of service Parkway and Crescent will operate at in 1979 and 1999. Parkway is currently used as a secondary access to the Center, he noted, especially by trucks.

Wilkerson asked: "Will the operation comply with State and County noise abatement guidelines?" He has been told that the arrival and unloading of a 5-ton truck at 5:30 a.m. and the arrival of 20 employees at 6 a.m. with customers arriving and departing all day "is not conducive to residential uses within 50-100 feet." (The Parkway ap-

artments are 120 feet from the postal site.)

Other questions he felt the postal service should answer were: "How much additional cost per year could be projected if the sales and service function of the post office were separated from the sorting and distribution function?" and, "How much would it cost to renovate the vacant theatre?"

In reference to the proposed design of the building, he felt the architect had not paid attention to the surroundings, since the whole area is "1930's modern-art deco. Green Ridge House, he suggested, was a good example of architecture designed to harmonize with the neighborhood. He also noted that the pedestrian path along Parkway was not shown in the site plan.

As an alternative to the site, he suggested moving the sorting functions out of the center and leaving a customer service facility staffed by local people, such as the sister city of Greenhills.

Candy Cane City Site

City Manager James K. Giese, on a request from council, explored the feasibility of another site in the center. The only site in that area that he considered a possibility was the parkland between the rear parking lot and Braden Field, including Candy Cane City. Using the overhead projector, he superimposed a map showing the size of the Parkway site on that location. Because such a site "would effectively wipe out all park land between Braden Field and the parking lot," he did not consider it feasible. Instead he suggested using the Candy Cane City property for the postal building itself and the area beside as a parking compound for postal vehicles. To reduce the acreage see POST OFFICE, page 6, col. 1

Council Hears Protest from Teen Group on Police Patrol; Acts on Historic Site

by Jean Marie Gainey

Thirteen teenagers attended the December 4, Greenbelt City Council meeting to request that action be taken concerning what they consider unfair treatment by police officers who patrol the Greenbelt Center.

Increased patrol time in the center was recently allotted in response to complaints of increased vandalism, abusive language, and "disgraceful" behavior by young people who crowd around entrances to stores. This complaint was addressed to the city council at the Nov. 6, meeting by a Greenbelt citizen.

The young people expressed their opinion that they are repeatedly chased away from the center by police officers, while "the old people can sit around and say the same things, use vulgar language, and its not against the law for them but it is for us."

Pat Leech and Danny Foster spoke for the young people. Leech said, "I like some of the police officers, but some I feel shouldn't be on the force. They walk around the center and use vulgar language, and complain when we do it." He also complained of physical abuse by an officer on Halloween night.

Councilman Richard Castaldi said, "As long as you are behaving yourselves and as long as adults behave themselves, everyone can actively participate in the center. If not, you will be chased out. Get this to your peers — make sure the ones who are messing it up in the center cool

it or get out . . . A policeman has to use his judgment."

Mayor Richard Pilski pointed out that, "Even if you are behaving yourself, when others are misbehaving, it will affect you because somebody is going to pay the price."

The council told Leech that the normal procedure is administrative and informed him he should talk to City Manager James K. Giese to work out a written format for investigation before any action could be taken.

Historic Site Application

In other business Council moved to make application to designate the original portion of the city, including the commercial center and park areas, on the National Register of Historic Sites.

This action was in response to a request received at the November 20 meeting from Greenbelt Homes, Inc. from board member Donald Volk. Volk asked for the city's support of GHI's application to place GHI on the National Register of Historic Sites. Volk also urged that the city request the inclusion of non-GHI portions of Greenbelt on the application.

GHI feels such a designation would be an advantage in obtaining grants for rehabilitation. City Manager James K. Giese pointed out that if inclusion in the National Register were achieved, "Any public improvements within that designated area involving federal or state grants would require special historic review prior to the project being approved." Recommendations, however, from such a review would not be binding. Giese

felt that "there is merit in Greenbelt — an early experiment in community planning — being designated as an historic place . . ." The matter was tabled until the December 18 meeting for public input.

GHI is also interested in designating the frame home area on the National Register. Although this area was not part of the original planned community and was considered by many at the time to be temporary housing it was undertaken to alleviate a housing shortage. Council felt however that the original portion of the city should be designated as historic property.

Other Council Business

City endorsement for Greenbelt Homes Inc's application for up to \$3 million in rehabilitation loan funds under a special set-aside from the Department of Housing and Urban Development was discussed further. Council had previously endorsed the concept.

Since the November 20 meeting, Mayor Pilski and Giese have met with Thomas Cook, Director of the Maryland Community Development Administration, who expressed general support and cooperation concerning the proposal. Mayor Pilski followed up with a letter to Cook.

The Prince Georges Community Development Block Grant Program provides funds for the employment of a staff person by the city to administer a Section 312 rehabilitation program. The city is now working up a job description.

Nothing can be done until a staff person is employed. Council doubts that the program can be in operation by January 1.

1979 Legislative Program

by Jean Marie Gainey

City Council reviewed the legislative program for the 1979 Session of the Legislature on November 20. The items, which were agreed to at a City Council work session on November 13, include: improvement of the Kenilworth Avenue, Greenbelt Road intersection, Baltimore-Washington Parkway improvements consisting of no more than four-lane reconstruction north of the Beltway and suitable access from Greenbelt Road and Southway.

Other items agreed to are: Metro financing, including the METRO "E" Route to Greenbelt; municipal share in revenue increases; property tax relief by way of alternate sources of revenues for local governments; state highway user revenues repayment of overpayments resolution so that the city is not required to repay overpayments made as many as nine years ago; state funding for Youth Service Bureaus to be increased at a greater rate than five per cent annually because of the mandated increase in salaries that exceed this; authority to reduce speed limits, which was removed from municipalities as a result of an error in the codification of state and motor vehicle laws; and continued opposition to the inter-county highway connector.

The Maryland Municipal League Priority Program is also part of the 1979 legislative program. It consists of: public official tort immunity, to limit personal liability of public officials when their actions were not willfully negligent or malevolent; provision that municipalities receive all the distributed revenues from the automobile registration for vehicles located within the municipality; and supplemental grants for police aid, to provide that these grants be distributed the same as regular grants, between the counties and the municipalities, rather than all funds being given to the counties.

At the Library

Adult book discussion - Thurs., Dec. 21, 10:15 a.m. to 12 noon. Conference Room. Book: *With Malice Toward None* by Stephan B. Oates. Please register at the information desk.

Children's Drop-In Stories, Thursdays, 2 p.m. Children's Program Room, Ages 3 to 5.

Note: The News Review regrets that a Young Adult Photography Workshop reported for Dec. 14 at the Greenbelt library was in error. The program will be held at the Fairmount Heights library.

"As-Is" Sales Restricted

Motor Vehicle Administrator Ejner J. Johnson stated recently that rules being proposed by the Federal Trade Commission governing the nationwide sales of used automobiles would not permit the sale of so-called "as is" vehicles in Maryland.

The FTC's proposal, patterned after a Wisconsin law, would require auto dealers affix notices to vehicles indicating that various components of the automobile are either "okay" or "not okay."

Johnson said that in announcing its proposal, the FTC unfortunately gave the impression that a dealer "would be able to sell a so-called 'as is' vehicle as long as he disclosed that fact." But the proposed FTC rules contain a provision stating that it will not "invalidate or restrict any right or remedy of any consumer under State law."

"As I read it," Johnson said, "the FTC's proposal will simply supplement the Maryland law."

"We feel the proposal will be of assistance to both the dealer and the customer because, by reducing to writing the list of possible defects, disputes arising from oral representations will be minimized."

WHAT GOES ON

Thurs., Dec. 14, 8 p.m. GHI meeting, Hamilton Pl.
Sat., Dec. 16, 10 a.m. - 1 p.m. Santa Visits the Youth Center
Mon., Dec. 18, 8 p.m. City Council Meeting, Municipal Building
Thurs., Dec. 21, 8 p.m. - GHI Meeting, Hamilton Pl.



AGENDA

REGULAR MEETING OF CITY COUNCIL

Monday
December 18, 1978
8:00 P.M.

- I. ORGANIZATION
 1. Call to Order
 2. Roll Call
 3. Meditation
Pledge of Allegiance to the Flag
 4. Minutes of Meetings
 5. Additions to Agenda by Councilmen and Manager
- II. COMMUNICATIONS
 6. Petitions and Requests
 7. Administrative Reports
 8. Committee Reports
- III. OLD BUSINESS
 9. Post Office Relocation and Site Plan
 10. Designation of Greenbelt Homes, Inc. Area on the National Register of Historic Places
 11. Rezoning Petition A-9313, Smith-Ewing Property
 12. Mobil Oil Station - Exception #3151
Advisory Planning Board Report #207
- IV. NEW BUSINESS
 13. Charter Amendment resolution, establishing elderly housing facility operation as a separate municipal enterprise. First Reading.
 14. Establishment of Special Fund
 15. Prince Georges County Municipal Association Legislative Program
 16. State Legislation—Veto for Liquor License Applications.
 17. Meetings
- V. MISCELLANEOUS
Note: Preliminary Agenda subject to change

Democrats Meet to Accept Applications for Boards

A public meeting has been scheduled by the Prince Georges Democratic Committee for Tues., Dec. 19, in the auditorium of the Maryland National Capital Park and Planning Commission, 6600 Kenilworth Avenue, Riverdale at 8 p.m. to permit interested persons to apply for and submit resumes for appointed positions during 1979.

There are more than 200 vacancies on 60 boards and commissions including the Board of License Commissioners, the Board of Election Supervisors, the Park and Planning Commission and the Board of Zoning Appeals.

CITY NOTES

The general crew patched base in areas of the east parking lot. The shoulders on Crescent Road were rebuilt where they were repaired. The stable material that was removed during the base repair was stockpiled on the triangle at the entrance to the Lake Park and will be used to repair that area.

The paving on Crescent Road was completed on December 1. A total of 796 tons of asphalt was placed on the road—700 tons on the finish surface and 96 tons for the leveling course near Northway.

The final surface was completed on the east parking lot next to Coop. Through December 7, a total of 532.6 tons of asphalt was placed on the lot. Total surface mix placed to date is 1,328 tons.

GREENBELT NEWS REVIEW

AN INDEPENDENT NEWSPAPER
 ALFRED M. SKOLNIK, PRESIDENT, 1958-1977
 Editor: Mary Lou Williamson, 441-2652
 News Editor: Elaine Skolnik, 474-6060
 Copy Editors: Barbara Likowski, 474-8483
 Virginia Beauchamp

STAFF

Alan Amberg, Sandra Barnes, Suzanne Batra, Edith Beauchamp, Clint Boushell, Linda Braun, Margaret Butler, Ann Marie Charter, Carl Choper, Corrine Comulada, Jean Marie Galney, Judy Goldstein, Marion Harrison, Janet James, Michael Jones, Bernice Kastner, Sid Kastner, Martha Kaufman, Katherine Keene, Dorothy Lauber, Loretta Levesque, Larry Levine, Leta Mach, Irene Menassa, Linda Orenstein, John Seng, Lois Schrom, Pearl Siegel, James Simon, Joanne Tucker, Jean Turkiewicz, Otille Van Allen.
 Business Manager: Betty Aggson; Circulation Manager: Mike Jones, 474-6001; Springhill Lake Circulation: Barbara Clawson, 474-4541. News Review answering machine: 474-4131.
 Published every Thursday by Greenbelt Cooperative Publishing Association, Inc.

BOARD OF DIRECTORS

Pres., Elaine Skolnik; Vice Pres., Sid Kastner; Sec., Barbara Likowski; Treas., Leta Mach; Virginia Beauchamp.
 MAIL SUBSCRIPTIONS: \$15 per year. Advertising and news articles may be mailed (Box 68, Greenbelt); deposited in our box at the Twin Pines Office before 4:30 p.m. Tuesday; or delivered to the editorial office in the basement of 15 Parkway. (474-4131). The office is open Monday after 8 pm for display advertising; deadline is 10 pm. News articles and classified ads are accepted after 8 pm on Tuesday; deadline is 10 pm.

Volume 42, Number 4 Thursday, December 14, 1978

**News Review Carriers
 Bring Season's Greetings**

Around this time of year it is customary for the *News Review* delivery boys and girls to make personal calls on the homes they service to present Christmas cards and greetings. The *News Review's* financial position is such that we cannot pay our carriers very high remuneration. They are therefore dependent on generous holiday donations to supplement their nominal pay.

Most of our carriers range in age from pre-teen to the middle teens. For the younger boys and girls, delivering the *News Review* is their first job experience. Many of the older carriers started at a young age and continue to deliver the *News Review* mainly as a service to their neighborhood. It is a learning process for all of these youngsters and, in some cases, the instillation of responsibility takes time and patience.

The holiday season affords us all a chance to show appreciation and to provide encouragement for the efforts of these youngsters and at the same time to show understanding for any failings that might have occurred during the year.

O'Driscoll-Black

Eva and Terry O'Driscoll announce the marriage of their daughter Amarilis to Jim Alan Black on Dec. 2. The wedding and reception took place at the Newton White Mansion in Mitchellville, Md. The wedding was attended by the Kevin O'Driscoll family from New York City and the Black family from Pennsylvania along with many other relatives and friends.

**CHRISTMAS MUSICAL
 AT METHODIST CHURCH**

The choirs of Mowatt Memorial Methodist church will present a Christmas musical, "No Vacancy", Sunday evening, December 17 at 7 p.m. at the church on Ridge Rd.

All Greenbelters are invited to come and enjoy. Refreshments will be served.

John S. Carman

Dr. John S. Carman, 78, a medical missionary in India for over 40 years, died of cancer Sunday at the home of a son in St. Paul, Minnesota. He formerly lived on Lakecrest Drive in Greenbelt.

A native of Rochester, N.Y., he began work as a missionary in India after graduating from Cornell Medical School in 1938. He served in two places in India before becoming head of the department of surgery at the Christian Medical College and Hospital in Vellore, South India, from 1946-1954. In 1954 he became director of the college and served until his retirement in 1967.

Following his retirement, Dr. Carman became an honorary member of the board of the Vellore Medical College in New York City. He was the author of a book "Rats, Plague and Religion."

Surviving are his wife, the former Naomi Hull, who served with him in India, three sons, John B., Cambridge, Massachusetts; Bruce W., St. Paul; and Robert H. of Vellore, India, who is currently on home leave at Chapel Hill, North Carolina; two daughters, Eleanor MacFarland, Downers Grove, Illinois, and Margaret Tegenfeldt, Kodaikanal, India; a sister, Charity Carman, of California and 20 grandchildren.

Dr. Carman was active in the Community Church, where he served on the board of deacons and was a member of the choir.

A memorial fund is being established for an honorary chair of surgery at Vellore. Contributions may be sent in care of the Greenbelt Community Church.

Dial 911 for Fire/Rescue

Your Christmas tree will become dry and very flammable within a week and the needles will fall off unless these rules are followed:

1. Cut off the base of the tree at an angle about one inch above the original cut;
2. Place it in a pan of hot water to cause it to take on water and put moisture back into the limbs and needles;
3. Leave the tree outside until you are ready to trim it;
4. Keep the tree in a deep pan of water for the entire period it is to be kept inside the house;
5. Add water each day to keep the level above the cut;
6. Place the tree away from stoves, radiators and other sources of heat;
7. Do not set the tree near any exit;
8. Keep the light bulbs free from contact with needles. (Use aluminum reflectors);
9. Place the tree in a sturdy base which cannot be easily tipped over;
10. Secure the tree against accidental tipping by attaching invisible guy wires to the walls or ceiling;
11. Use only "UL" approved electric lights with cords in good condition;
12. Never use candle lights on a tree;
13. No smoking near the tree;
14. Flame proofing of trees - 9 oz. of Borax & 4 oz. of Boric Acid to 1 gallon of water. (Use this mixture to add to the water level daily as well as for step 2); and
15. Dispose of your tree properly when finished with it & don't litter.

The Polaschiks

send holiday wishes to:

Mayor Pilski, Council, City and GHI employees, neighbors, friends and others who help us enjoy Greenbelt living.

Steve and Betty



For Insurance Call:
Don W. Taulelle
 8200 Edmonston Rd.
 Greenbelt, Md. 20770
474-5007
 Like a good neighbor,
 State Farm is there.
 State Farm Insurance Companies
 Home Offices: Bloomington, Ill.

"A Boon to Greenbelt"

To the Editor:

I was distressed to read in the *News Review* that the Council is reconsidering the F-6 bus route. I have recently discovered the F-6 and consider it the greatest thing to happen in Greenbelt lately. At last there is convenient and economical public transportation to and from Prince Georges Plaza!

The Westway route is the only practical way to the Center from Lakecrest Drive, and disturbs the least number of people. The only alternative I can see is for the bus to skip Lakecrest Drive altogether and turn directly onto Southway from Greenbelt Road — or come into town the "back way" via Crescent Road as buses on other routes do. Both of these choices would leave out the University Square and Charlestowne Village people; perhaps the critical question is whether these people are using the bus.

Whatever the decision, please keep this bus running. It is a boon to Greenbelt.

Kathleen McFarland

**Post Office Sells 1978
 Stamp Collecting Books**

Postmaster Emory A. Harman has announced that the U.S. Postal Service's 1978 Mint Set and the new 5th edition of the *Stamps and Stories* book are now available at the Greenbelt post office for purchase by patrons.

The 1978 Mint Set is a colorful folder containing and describing all the 28 commemorative and special stamps issued by the U.S. Postal Service during 1978. The 1978 issue is the latest in a series of annual sets of commemorative stamps released by the post office each year prior to Christmas.

The 5th edition of *Stamps and Stories*, the U.S. Postal Service guide to stamp collecting, is also for sale at the post office, Harman said. It is designed to introduce non-collectors to stamp collecting as well as to provide interesting philatelic information.

Harman also noted that purchasers should not forget that a number of popular topical stamp collecting kits may be purchased for beginning collectors.

For information, call 345-1335.

GHI NOTES

Some members who are receiving Section 8 housing assistance payments have expressed uncertainty on how to fill out the rehabilitation questionnaire recently sent them. Should they indicate that they are interested in financial assistance with their monthly charges if they are presently receiving Section 8? The answer is yes.

The reason is that the Section 8 program which is administered through the county's Housing Authority is a yearly program. There is no guarantee that these monies will continue year to year (although there is no reason to think that they will stop.) On the other hand, the 325 units of Section 8 funds, earmarked to GHI to be used in conjunction with the rehabilitation program represents a 20-year commitment by the Dept. of Housing and Urban Development. It is possible that those residents now receiving Section 8 may be able to transfer to the program which is connected with rehabilitation with its long-term security. In any event, members do themselves no harm by returning the green sheet indicating interest in either Section 8 or the Loan Deferral Program.

Two meetings scheduled for next week: the Long Range Planning Committee on Wed., Dec. 20, 8 p.m., and the GHI Board of Directors, Dec. 21, 8 p.m. Both are in the GHI Board Room, Hamilton Place.

MOWATT MEMORIAL

United Methodist Church
 40 Ridge Rd. 474-9410
 Church School 9:30-10:30 a.m.
 Morning Worship 11 a.m.
 (Cribbery and Nursery provided)
 SERMON:
 'Is It Christmas Yet?'
 Christmas Musical "No Vacancy"
 7 p.m.

ST. JOHN'S CHURCH

Episcopal
 Baltimore Blvd. at Powder Mill Rd., Beltsville
 8 a.m. Holy Communion
 10:30 a.m. Morning Prayer (Holy Communion 1st Sunday)
 10:30 a.m. Sunday School
 Rev. John G. Bals, Rector
 422-8057

**STUFF NEXT YEAR'S
 HOLIDAY STOCKING NOW!**

**Twin Pines Savings & Loan Assn
 6% ANNUAL RATE ON
 HOLIDAY SAVINGS**

COMPOUNDED DAILY FROM DATE OF DEPOSIT

**OPEN A HOLIDAY
 SAVINGS ACCOUNT**

**DEPOSIT ON A
 REGULAR BASIS**

**RELAX AND ENJOY NEXT
 SEASON'S HOLIDAYS**

Ask about our savings certificate plans:

Minimum Deposit \$1000

- 6.25% per annum for 3 months
- 6.50% per annum for 6 months
- 7.00% per annum for 12 months
- 7.50% per annum for 4 years
- 8.00% per annum for 8 years

(A substantial interest penalty is required by law for early withdrawal)

HOURS

- Mon.-Thur. 9-6
- Friday 9-8
- Saturday 9-12

474-6900



Maryland Savings-Share Insurance Corporation
 (An Agency of the State of Maryland)
 Insures each account to \$40,000.00

Put feet on your prayers.

Give expression to your faith.

Let God's Word speak to your life.

GREENBELT BAPTIST CHURCH

474-4812 Crescent & Greenhill Roads
 Bible Study for all ages (Sun) 9:45 am
 Worship services 11:00 am & 7:00 pm
 Mid-week prayer service (Wed.) 8:00 pm

For bus transportation, call Church office 8:30-12:30 weekdays.

Greenbelt Community Church

(United Church of Christ)

Hillside and Crescent Roads - Phone 474-6171 (mornings)

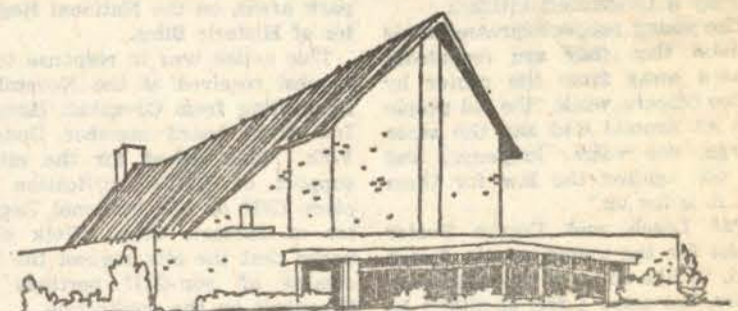
Sunday

Church School for all - 9:45

Worship Service - 11 a.m.

Nursery provided at 2B Hillside

Rev. Sherry Taylor and Rev. Harry Taylor, co-pastors



Holy Cross Lutheran Church

6905 Greenbelt Road

Worship Services: 8:30 and 11:15 a.m.

Sunday School: 9:50 a.m.

Weekday Nursery School: 9-11:30 a.m.

Edward H. Birner, Pastor

Phone 345-5111

Post Office Update

by Elaine Skolnik

It appears likely that the U.S. Postal Service and the National Capital Planning Commission (NCPC) will agree to the city's request that the Maryland National Capital Park and Planning Commission's (MNCPPC) consideration of the Parkway post office site and building plans on December 21, be postponed. NCPC officials are sympathetic with the desire of the city to pursue alternatives that would keep the post office in the commercial center.

NCPC referred the plans to the city and to MNCPPC for review, but the Park and Planning Board's final action is not binding on NCPC. Neither, for that matter, is NCPC's position binding on federal installations in Maryland. However, City Manager James K. Giese noted in a memo to the city council that "because their (NCPC) approval is mandatory within the District, they carry a great deal of weight with the federal agencies."

The actual site selection, and acquisition process occurred in 1973 (A-95 review) when both MNCPPC and NCPC apparently gave the Parkway location their blessing. However, the city maintains that it was overlooked at that time, that it was not notified of the A-95 review nor sent any plans. The NCPC staff is now raising questions about the adequacy of the 1973 review, and is expected to meet with Postal Service officials this week to request a delay so that further exploration can be carried out with a view toward locating the facility in the commercial center.

As soon as feasible, Congresswoman Gladys Spellman plans to hold a meeting of all interested parties to discuss the matter in detail.

Giese, at the direction of council, notified Postal, NCPC and other interested parties that the city council is studying the Candy Cane City location for a postal facility. Directly behind the commercial center, the site is a tract of city parkland located between the Greenbelt municipal swimming pool and the Greenbelt Plaza Apartments to the north of the large municipal parking lot.

At a December 11 work session, Giese had informed council that a letter had been received from postal representative George Dennison requesting more information about the Candy Cane City site. He said that the postal service was making a preliminary study of the site to determine whether it was on a flood plain and whether all the water from the stream can be piped.

Separation

However, council unanimously supports a full (customer) service

Volunteers Needed

Volunteers are urgently sought for the Meals On Wheels program. If enough persons do not respond, the program is in jeopardy. Call 345-6395 to help.

Christmas Decorations To Be Judged on 22-23

The Greenbelt Jaycees will be viewing and judging Christmas decorations on Dec. 22 and/or Dec. 23. Awards will be given to the winners at their homes on Christmas Eve. Nine awards will be given—three each to frame and brick homes, three to houses, and three to apartments. For more information call Bill Hammond, Chairman, at 345-5860 or Andy Webster, co-chairman, at 474-9554.

Weight Training Program

A weight training and fitness program for men and women, ages 18 and older, is now being held on Mondays, Wednesdays and Fridays from 7 to 10 p.m. at Greenbelt Junior High School. Registration will be held during the program hours. There is a fee. For further information, call 277-8350. The program is sponsored by MNCPPC.

facility in the center, with the distribution operation outside the core of Greenbelt. Although postal officials have advised the city that it would not be economically feasible to separate the operations, council is asking for further documentation to show why this is not a feasible alternative.

Council also desires additional information concerning alternative site locations that have been given consideration by the Postal Service. About a month ago the Information Office of the Postal Service informed the News Review that several sites—Hamilton Place across from the GHI offices; Parcel 15, off Greenbelt Road near the American Legion Post Home; and Beltway Plaza—have been considered as alternatives. None of these has been confirmed by area postal officials, however. Greenbelt East and the Golden Triangle have also been mentioned as possible locations.

CANDY CANE CITY SITE DESCRIPTION

The Candy Cane City site, under consideration as a possible location for a new post office, is a tract of city parkland between the Greenbelt municipal swimming pool and the Greenbelt Plaza Apartments and north of a large municipal parking lot which is generally underutilized. The tract lies directly behind the Greenbelt Commercial Center.

This site receives its name from a playground located there. The area is relatively level, except near the Greenbelt Plaza Apartments, with a stream channel running through the middle of the property. This channel begins at the parking lot, where two storm sewer lines outfall. Surface drainage from the parking lot also enters the stream channel at that point.

For possible development, the stream channel could be enclosed in a sewer pipe. Several sanitary sewer lines crossing the property should not prevent the siting of a building. Although surface flooding occurs in the nearby athletic fields at the north of this property because of a stream channel of inadequate size, no surface water flooding affects the Candy Cane City area.

The Candy Cane City area is too small to accommodate a postal facility of the type planned for the site at Parkway and Crescent Road. However, it is believed to be adequate for a post office building and parking compound for the storage of postal vehicles and use by delivery trucks. The adjacent municipal parking lot would provide adequate parking facilities for customers and employees of the postal facility.

Mishkan Torah

A Bake and Gift Shop Sale will be held at the Mishkan Torah on Sunday, Dec. 17 from 9:30 a.m. to noon.

At 8 p.m. Rabbi Moshe Silverman of the University of Maryland's Hillel Foundation will examine various aspects of Chanukah. Interested persons are invited to attend.

BAKE & GIFT SHOP SALE

Sun., Dec. 17, 9:30 a.m. - noon

at the

MISHKAN TORAH

Ridge & Westway

featuring

Gifts for All Occasions, including Chanukah and holiday items.

Sponsored by the Mishkan Torah Sisterhood

HERE COMES SANTA

Saturday, December 16

to the

Greenbelt Youth Center

via the

Greenbelt Volunteer Fire Dept. Co. 35 . .

at 10 a.m. and will stay till 1 p.m.



Come talk with Santa and his helpers. If you like, you may participate in the Toy Exchange. Bring a toy; take a toy, or bring one for a needy child. Cartoons will be shown. Treats for the kids. Refreshments for Mom and Dad.

OTHER WEEKEND ACTIVITIES

Saturday, December 16
7:30 p.m. Greenbelt
Youth Center

CAROLING - Come with us to the Greenbelt Center Mall and serenade the shoppers with all of the old favorite carols. Refreshments will follow.

Friday, December 22 and
Saturday, December 23
Have lights on at dusk

ANNUAL CHRISTMAS DECORATIONS CONTEST - The Greenbelt Jaycees will view as many decorated city homes and apartments as possible. Judging will be done on outside decorations and visual displays.

Sponsored by the Greenbelt Recreation Department, the above programs are open to the public free of charge. For further information, call 474-6878.

KASH INC. REALTORS

Computerized Multiple Listing Service

HOMES FOR SALE

345-2151

Kash Inc., hopes to present you with another bag of Christmas surprises.

Remember that last week we had a splendid home in Woodland Hills that we felt would sell right away. It has been sold.

We have another absolutely unique opportunity. A beautiful Greenbelt Co-op home. The very best location, at 6-P-Ridge Road. This handsome 3 bedroom brick home has a beautiful view, overlooking deep woods. It also features a custom built 12'x24' covered concrete patio which is constructed to make a 2 story addition possible. Owner has bought another home and says sell this beautiful home quickly.

We are holding it open Sunday from 12 noon till 5 p.m. Come and have a look or call 345-2151. We promise you'll love it.

Directions Ridge Rd. from Southway, past Westway, to 6 court of Ridge and to 6-P.

Last week we didn't get to describe fully our fabulous newly listed 2 story home with full basement in lovely Cheverly. We are sure that within a week this home will be sold. So many features, including brick, stone and aluminum construction, and a 12'x20' sundeck overlook a deep wooded back lawn. It has 4 bedrooms, 2 baths, sep. dining room, lg. kitchen, full basement with walk-out exit to covered patio, very heavy duty cent. A/C system. All appliances. This fabulous home is owned by a school principal who is retiring; would you believe only \$59,950 for all of this; all terms including VA or FHA. Call 345-2151.

We have a real opportunity for you. An all brick 3 bedroom rambler with full basement in a lovely section of Lewisdale, behind Toys R Us. It is vacant for quick possession. Nice level lawn. VA approved at only \$49,000. If you are a veteran, you can get into this nice home with very little cash. Just ask for Mr. Kash or Mr. Guerre; move in by new years.

Open Sunday 12 to 5. The address is 2204 Hannon St. Directions University Blvd. to 23rd St. (by Toys R Us); down 23rd St. to Hannon St. and right to 2204. or call 345-2151.

Do you want a big Colonial in the lovely Carole Highlands section, near Langley Park? We present such a home, located on a prominent high point, but with level ground, surrounded by beautiful trees. This might be exactly the home for you. Call 345-2151.

Do you want a budget priced home in nice condition? Here it is, a lovely 4 bedroom brick semi-rambler with full basement and rec. room. Just right to get started in for home ownership. Only \$44,500 on all terms including nothing down to vets. You would only need total family income of \$18,000 before deductions to buy this home; and it is conveniently located near Capital Plaza. You have to hurry on this kind. Call now 345-2151.

Another bargain! A very nice 3 bedroom all brick semi-colonial with full basement; a really spacious home with level fenced lawn, and a nice wooded area in back; VA approved at only \$39,900 no down to vets. If you have a total family income of \$16,500 before deductions, you can buy this home. Call 345-2151.

Let us show you a really nice 2 bedroom corner frame home, priced right at only \$21,000. Remodeled kitchen; nice fenced yard and other extras. Owner has bought new home and is in a hurry!

We also have a lovely vacant 2 bedroom frame home at 9-C Hillside Rd.; excellent location with no congestion. New floor in living room; 1/2 bath downstairs; patio and nice trees in back; would you believe only \$19,950. Call 345-2151.

Now that the ads have been written, let's have a little talk. Every information we have tells us that real estate will continue to advance in value in this area at least 8% to 10% a year. If you buy a home with a small down payment, this means you get a return of 8% to 10% on the full price of the house. When you also consider the very heavy tax write-offs you get with home ownership, as compared with a pile of rent receipts, there just isn't any reason not to buy a home now. Kash, Inc. has a complete selection of homes throughout Prince George's County which you can own for little or no down payment. The house you buy for \$55,000 now will be worth \$60,000 next year and \$66,000 in 2 to 3 years. No one with a view to his future can overlook those possibilities. Come in and let us help you to get a home and move with the economy.

KASH, INC. REALTORS

YOUR NEIGHBORHOOD REALTOR

FIND US FAST

FIRST IN THE YELLOW PAGES

(p. 1180)

345-2151

Allen Printing Service

Would like to serve your
needs in the Printing Line

Call Us for Free Estimates on

All Types of Printing

Letterpress & Offset

864-8844

We have it on high authority that sharing the ride is a very good idea.

It made sense to Noah. After all, it was a whole lot more economical and efficient to get together and share the ride than it would have been for everybody to go their own way. And that still holds true today. Sharing the ride with

just one other person can cut your commuting costs in half. Think about it.

Share the ride with a friend. It sure beats driving alone.



A public service of this newspaper, The U.S. Department of Transportation and The Advertising Council.



POST OFFICE con't from p. 1 age required, the existing rear lot would then be used for employee and customer parking.

Possible problems noted with this location were parking conflicts during heavier summer use, the effect on the Labor Day Festival, and whether the site's distance from the commercial center would affect its viability.

Giese concluded that the city's interests would best be served by a customer service facility in the commercial center and a new distribution facility elsewhere. "Barring that possibility," Giese felt "the Parkway and Crescent Road site is the best alternative."

Citing the "potential adverse impact on the residential character of Parkway," Councilman Richard Castaldi, however, felt the Candy Cane City site had more advantages than any other. The use of that site might solve the problem of water sitting on Candy Cane City, he felt. He discounted the arguments of tree loss and the steep grade (steps) to get to this site because trees would be lost anywhere and people could get to the facility in other ways, such as driving.

Councilman Thomas White also saw no serious drawbacks with the site. He suggested that the facility could even be advantageous for the Labor Day Festival, with rest room facilities being used on a

shared basis. White was concerned that the city would probably have to be responsive to the need for changes on Parkway Road and for pedestrian facilities, if that site were selected.

Other Views

Councilman Charles Schwan delineated the alternatives as the Parkway site, a division of post office functions or further investigation of the Candy Cane City site. In view of postal objections, he did not feel the present facility could be renovated or that the theatre could be used.

Councilman Gil Weidenfeld also felt that Candy Cane City had "some possibilities." He asked, however, whether there would be any legal problems in selling the land, which was deeded to the city by the federal government in 1953. Giese explained that the city parkland was dedicated for park and other municipal purposes.

City Solicitor Emmett Nanna was not sure whether the original restrictions still held after twenty years. He suggested the matter could be checked out with the successor agency of the original grantor - the Public Housing Authority. He felt a quitclaim deed could be sold to the post office and that there would be no problem if no one raised any questions.

Although Mayor Richard Pilski said he would like to maintain the post office in the Center, he felt

doing so was "trying to hang on to a dream." He suggested that the future entrance on Parkway and Crescent would blend in with the churches and other facilities located along the road. He also felt the vacant post office building in the Center could be used by other businesses wishing to expand and thus revitalize the Center. He stated "I don't want to move it out of town."

In Summary

Council reemphasized its unanimous support of a full service customer facility in the Center and its desire to discuss the division of postal functions and the Candy Cane City site with the post office. In requesting the delay of the site plan consideration, council decided

Fall Sports Wrap-Up

by Alan Amberg

Eleanor Roosevelt had a good year all around in fall season sports.

The ERHS football team had a good season for a change. With a record of five wins and five losses, ERHS placed third in the county.

Soccer also had a good year. Under the coaching of Greenbelt Robert Dredger, the team had a record of six wins, five losses and one tie. They placed third in the

to notify all agencies involved (the Council of Governments, National Capital Planning Commission, and MNCPPC) as well as Congresswoman Gladys Spellman.

county. Greenbelt Paul Felsher received an honorable mention in All-Metropolitan Soccer.

The Boys Cross-Country team had a very good season — they placed third in this district and eleventh in the state.

However, the star athletic team from ERHS was the Girls' Cross Country team. Our team placed first in this district and second in the state.

In the Math Team's first meet with five local high schools, the "A" team beat all the other "A" teams. The "B" team made an excellent showing. Even the "D" team beat one of the other "A" teams.

To all of our teams: GOOD WORK!

PAID ADVERTISEMENT

**It Takes Money to Make Money
Private Enterprises Want
To Loan You Money**

Borrow For Your Business Venture From Businesses That Understand Your Business

A new trend has been developed that makes investment money available on businesses like yours FROM lenders and investors that relate to businesses such as yours. Small and large companies alike are becoming reluctant to obtain expansion, investment and venture capital from lending institutions that will talk in their terms only.

Now, WORLDWIDE FINANCE EXCHANGE is providing a new concept in exposing you to new sources of capital that know and understand your business requirements. They talk money to you on YOUR terms!

Four Basic Categories

More than 1,100 investment capital-heavy companies throughout the nation have been brought together by WORLDWIDE FINANCE that want to loan or invest money in four basic areas of business:

BUSINESS EXPANSION CAPITAL
Number of Funding Sources OVER 150
Lending Range \$3,000 to Unlimited

Excellent for revolving lines of credit
Inventory financing
Accounts receivable
Factoring
Equipment purchases
Times sales contracts
Rediscounting

LEASING SOURCES
Number of Funding Sources OVER 500
Lending Range \$500 to Unlimited

Office furniture
Business equipment
Computer hardware and software
Construction equipment
Transportation (airplanes, trucks, etc.)
Farm equipment
Electronic equipment
Oil field supplies and equipment

VENTURE CAPITAL
Number of Funding Sources OVER 350
Lending Range \$50,000 to Multi-million

Long term & intermediate lending for general business expansion
Manufacturing
Construction
Movies
Oil & gas development
Energy sources development
Electronic development

REAL ESTATE
Number of Funding Sources OVER 150
Lending Range \$50,000 to Unlimited

Apartments
Motels/hotels
Shopping centers
Housing developments
Recreational facilities
Business & office complexes
Mobile home parks
Agricultural
Nursing homes
Medical institutions

These four categories over a broad spectrum of business interests that represent loaning power into the billions of dollars. Loans from a few hundred dollars to long-term arrangements amounting to multi-million dollar agreements are available from interested individuals and companies who want to help you meet your growth and financial desires. In fact, in many transactions the bigger the loan requirement, the more attention you will demand.

How You Find These Investors
WORLDWIDE FINANCE has been years in developing four portfolios of companies ready and willing to talk with you immediately about your financial requirements. These specialized portfolios contain names, companies, responsible persons, range of lending or investing power and most instances specific areas of business activities. If your financial requirements are specifically suited to just one or more of the four general categories, send for that portfolio and allow it to open a new world of financial growth power for your business ventures. YOU choose the potential source of lending activities.

WORLDWIDE FINANCE EXCHANGE
P.O. Box 2952 • 1248 East 49th Street North
Tulsa, Oklahoma 74101 (919) 425-5547

PAID ADVERTISEMENT

**Finance Your Own Business
Individuals & Brokers —
An Ultimate Source of Lending Power**

People Who Have Money Make Money
The WORLDWIDE FINANCE EXCHANGE portfolios have been years in growth and development, so you will be dealing with professional business executives just like yourself — people who want to get involved because they have the capital to do just that, and they understand that it takes money to make money.

The time and money you save with WORLDWIDE FINANCE portfolios will more than repay the small investment involved to obtain highly rated firms (many are AAA rated). Further, your portfolios' cost is totally tax deductible as a business expense.

You can order your choice of one or any combination of the four portfolios at volume discount prices:

Any One Portfolio	\$25.00
Any Two Portfolios	40.00
Any Three Portfolios	52.00
Any Four Portfolios	60.00

Your bound portfolios will be forwarded to you by return mail.

**Modernize Your Financing
Detach and Send Today**

Order All Four Portfolios for Maximum Opportunities

WORLDWIDE FINANCE EXCHANGE is the new and modern method to find financing for your particular needs. Send check, money order or for convenience use your Master Charge or VISA cards for your portfolios.

Name Title

Address

Company City

State Zip Phone

Please send me the following lists:

- BUSINESS EXPANSION CAPITAL
- LEASING SOURCES
- VENTURE CAPITAL
- REAL ESTATE

Enclosed is (circle one):
\$25 for 1 \$40 for 2 \$52 for 3 \$60 for All Four

Please bill my (check one):
 VISA MASTER CHARGE

Card No.

Expiration Date

Signature

Satisfaction Guaranteed or Money Refunded

Shouldn't your savings be anchored here?



FIRST FEDERAL SAVINGS & Loan Assn. of Annapolis

ANNAPOLIS: Main Office; 2024 West Street, 268-7891

GREENBELT: Beltway Plaza Shopping Center, 474-6004

**\$1.00 OFF
HOMEMADE
LASAGNA**

DINNER INCLUDES:

- LASAGNA
- OPEN SALAD BAR
- GARLIC BREAD

\$ 2.50
REG. \$3.50

WITH THIS COUPON ONLY

NO CARRYOUTS

WEDNESDAY ONLY



PAPPY'S

UofM Pappy's 5810 Greenbelt Road (Next to Beltway Plaza) Plaza 441-1200



CLASSIFIED

\$1.50 for a 10 word minimum. 10c each additional word. Submit ads in writing, accompanied by cash payment to the News Review office at 15 Parkway before 10 p.m. of the Tuesday preceding publication, or to the News Review drop box in the Twin Pines Savings & Loan office before 4:30 p.m. Tuesday. There is no charge for listing items that are found. **BOXED ADS:** \$3.00 minimum for a 1 1/2 inch, 1 column box; \$1.00 each additional half inch. Maximum ad for this section is three inches, and all ads must be prepaid.

CALDWELL'S WASHER SERVICE. All makes expertly repaired. Authorized Whirlpool dealer. GR 4-5515.

PIANO TUNING AND REPAIR - Expert and Reliable Piano Service to Greenbelt since 1960. Benjamin Berkofsky 474-6894.

START NOW

Amway distributor offers opportunity for good earnings. You pick the hours. We assist.

For appointment, call 474-4067

after 5:00 p.m.

Over 21 only

(MARIE'S POODLE GROOMING) make your appointments today. Call 474-3219.

TYPEWRITER REPAIR - Electric, standard, and portable. Call 474-0594.

PIANO LESSONS: Peabody Conservatory Graduate. Beginners-Advanced. 474-9222.

Need Home

Improvements?

Call John

Specializing in Ceramic Tile and Kitchen Floors, Sidewalks, Patios, Driveways, etc. Call anytime.

345-7497

PAINTING - Interior, exterior, 20 years exp. Do my own work. Call Bob Neal, 776-5461.

LIGHT HAULING, w/ pick-up Truck. Call Mike after 4:30, 474-9401.

PAINTING

Interior and exterior. Drywall and plaster repair. Gutters and downspouts cleaned, also screens, if wanted, for gutters. Call from 5 to 8 p.m.

Grady's Painting

441-9078

Greenbelt, Md.

TYPEWRITER OR ADDING MACHINE \$30 & up. Howard's Typewriter Co., 5103 Baltimore Ave., Hyattsville, Md. 277-8333

PAINTING - Interior, exterior wallpapering and light carpentry also. Good Greenbelt references, excellent workmanship. Frank Gomez. 474-3814.

Phone 345-5443

Pat-Ern
Ceramics

Macrame

Start off the New Year
by
Learning a Craft

Ceramics Classes start Jan. 3
Macrame Classes start Jan. 4
Mon.-Thur. 10-4 7-9
Fri. & Sat. 10-4
153 CENTERWAY
GREENBELT, MD. 20770

Our Neighbors

First place honors went to the team of Clare Jacobs and Ray Carriere at the Dec. 8 duplicate bridge game. Tied for second place were the teams of Ann Pisano and Ugo Gervasio and Doris Johnson and Ruth Schultze.

U. S. Air Force Sergeant James C. Windle is now stationed at Andrews Air Force Base. A law enforcement specialist with the unit of the Military Airlift Command, he previously served at Lajes Field, Azores. His wife, Paula, is the daughter of Mr. and Mrs. Lawrence Levine of Eastway.

At the recent Maryland Recreation and Park Association general membership meeting, the following city employees were certified under the provisions of the MRPA Board of Examiners for professional recreation and parks qualifications: Harry James, assistant recreation director, Dennis Doornekamp, parks

NOW IS THE TIME for all good people to think of their loved ones and the YULETIDE SEASON. Show your love with a unique gift - be it jewelry, pottery, or silk - from the UNIVERSITY BOUTIQUE INTERNATIONAL, in College Park. 277-5521.

LUXURY TOWNHOUSE

for sale: 3 bedrooms, 2 1/2 baths, formal dining, big kitchen, CAC, draperies, hardwood floors, immaculate. Walk to lake. \$41,000 assume with high down payment. Owner

474-0238, 474-5533

NEED DEPENDABLE loving mother to care for 16 month old boy. Four days a week. Prefer not watching more than two other children. Call after 6 p.m. 345-2992.

CLERK-TYPIST for Silver Spring synagogue office. Afternoon hours. 598-3410.

Moisture & Mildew Problems?

Aire-Dri

474-5040

By Sand-Sei

DIRECTOR OF MAINTENANCE: College degree or equivalent administrative experience in large residential complex. Emphasis on MANAGEMENT ABILITY to develop work control, performance standards, employee evaluation and management information systems. Complete maintenance for 1,608 units. Supervision of 40+ crew in all trades. Large boiler system experience desired. Unique co-op environment, innovative leadership encouraged. Excellent fringe. Salary \$18,500-21,600, based on qualifications. EOE. Resume to Box 182, Greenbelt, Md. 20770.

FOR SALE - Bicycles, 27" & 26", \$7.50 each. 474-8470.

CLASSICAL GUITAR - silvertone. \$25.00. 345-3762 after 5 p.m.

BABYSITTER: Full-time for 18-mo. girl. Loving home and dedication to children a must. 474-5977.



F. Johnson of
In-Home
TV Service

visits Greenbelt 4 days each week.

- ✓ Always estimates within 10%
 - ✓ Always calls before visiting
 - ✓ Works some nights & weekends
 - ✓ Top rated with consumer groups
 - ✓ Prompt, fair - 18 yrs. experience - He listens!
 - ✓ Most repairs done in your home
- Master Charge, VISA accepted.
CALL 588-4166 IN DAYTIMES
565-0001 Evenings & Weekends

superintendent, George Rogala, recreation area supervisor, JoAnn Rowe, recreation assistant and Betty Lehman, secretary for the recreation department.

Kay Davis is enrolled as a freshman at Western Maryland College.

Navy Airman Recruit Robin L. Legere, whose husband is the son of Robert C. Legere Sr. of Greenknoll Pace, has completed recruit training at the Naval Training Center, Orlando, Fla. She joined the Navy in 1978.

John Michael Tatum, new son of former Greenbelt S/Sgt. Richard Tatum and his wife Marion, arrived Dec. 11 weighing 8 lbs. 12 oz. He joins a sister, Kim, age 3 years. John and his family are living in Dover, Delaware until June when Richard, who is in the Air Force, is being transferred to Alaska. John's grandparents, Carlton and Joan Tatum, and great-grandmother, Catherine Tatum, are all Greenbelters.

RON BORGWARDT

10212 Baltimore Blvd.
College Park, Md. 20740
(on U.S. 1 at the Beltway)
474-8400

"See me for car, home,
life, health and business
insurance."



State Farm Insurance Companies
Home Offices: Bloomington, Illinois

PORTER'S LIQUORS

8200 Balto. Blvd. 474-3278
(next to McDonald's in College Park)

We have the largest selection of wines from around the world. Special prices on case purchases

Order Early

Any questions about wines welcomed

HANSEN PLUMBING - 14C Hillside Rd., Greenbelt, 345-5837. Bonded, licensed, small home jobs.

EXCELLENT CHILD CARE by licensed home, Greenbelt area. Call 441-9417.

CASH IN on the big fall and Christmas buying season: Distribute nationally known merchandise. Write to P.O. Box 633, Bowie, Md. 20715.

NEED LOVING babysitter for 3 year old. Call 345-5067 evenings.

LOST - Our gentleman cat "Smoke" has been missing since last Wednesday. He is a big handsome maltese (dark gray) colored cat. He has his left hind leg gone. He lost it in an accident 3 years ago, on his first and last night "out with the boys." Dee Davis 345-9647, wk 488-5900.

J. C. Henson

Photographer

MODEL PORTFOLIOS

PORTRAITS

ADVERTISING

For Information Call

441-9231

Own Your Own Business. Area distributor for Rand McNally Maps. No selling. Service company established accounts. Investments \$1,650 to \$15,450 secured by inventory and equipment. Write, include name, address, telephone and three references to Personnel Director, NAMCO 2121 Montevallo Rd. S.W. Birmingham, Alabama 35211 or call toll free 1-800-633-4545.

University
Boutique
International, Inc.

Beautiful, natural clothing and exquisite gold and silver jewelry for women & men

COLLEGE PARK

7420 Baltimore Avenue
277-5521

Police Blotter

Officers responded to a complaint about a loud party in an apartment on Mandan Road and subsequently broke up the party. One youth, after leaving the apartment, became loud and disorderly in the hallway. He was requested to quiet down. When he refused, he was placed under arrest by PFC Lann and charged with disorderly conduct. Upon being searched subsequent to being charged, a container with suspected narcotics was found. A field test revealed it was heroin. The youth, a fifteen year old runaway, was also charged with possession of a narcotic. When his parents could not be contacted, he was transported to Boys Village in Cheltenham.

Several days later, officers were again requested to respond to the same apartment where a loud party was occurring. As a result, four subjects were charged with possession of narcotic - marijuana. In addition, the 17 year old resident of the apartment was charged with maintaining a common nuisance and he was detained at Boys Village. A 17 year old non-resident was released to his mother pending Juvenile Court action. A 22 year old non-resident was released on personal recognizance pending District Court Action and the 15 year old non-resident mentioned in the above incident was again incarcerated in Boys Village, additionally

charged with escaping from detention.

Insure two and save

If you're a two-car family, Nationwide can save you money on your auto insurance. Additional liberalized benefits are available to those who qualify. Call a Nationwide agent for complete details.

MARTY MADDEN

Insurance Center

Weber Building

9420 Annapolis Rd.

Lanham, Md. 20870

Tel. 577-0200

NATIONWIDE INSURANCE

Nationwide is on your side

Nationwide Mutual Insurance Company
Nationwide Mutual Fire Insurance Company
Nationwide Life Insurance Company
Home office: Columbus, Ohio

Edgewood TV & Audio

Dependable Guaranteed Service

4932 EDGEWOOD RD.

COLLEGE PARK, MD. 20740

Licensed & Bonded

SPECIAL

\$5.00 off on all

Repair Jobs

With This Ad

CALL 441-9116

Greenbelt Pizza - Sub Shop

16 oz. Coca-Cola, R.C. Cola, 7-Up or Dr. Pepper (your choice) \$1.19/carton
2 liter Pepsi 89c/bottle
Half Gallon 7-Up or Dr. Pepper (your choice) 89c/bottle
28 oz. bottle of Coca-Cola 39c/bottle
FRIDAY & SATURDAY:
Large Pepperoni Pizza \$2.95
107 CENTERWAY 474-4998

GREENBELT

ONE OF
A KIND

This 3BR frame townhouse is definitely one of the nicest Greenbelt has to offer! W/W carpet, model kitchen with eye level oven, counter top range, solid oak cabinets, solarium floor, dishwasher. Utility room with washer and dryer. Fenced yard with beautiful shed. Immaculate \$28,000. Financing Available.

HYATTSVILLE

CLOSING COST HELP

"SELLER SAYS SELL," and to do so he will pay \$1,000 of purchaser's closing costs on this charming 4BR Cape Cod with eat-in kitchen and upstairs den. Offered all terms. NEAT AS A PIN. HURRY!

Call 474-5700

NYMAN REALTY, INC.

151 Centerway



consumers
A COOPERATIVE OPEN TO ALL SHOPPERS **CO-OP**

Visit Our In-Store Pharmacy
Beer & Wine Sale on Sunday

ALL PURPOSE

POTATOES
20 LB. BAG **1.38**

SWEET

TANGELOES
100 SIZE
EA. **8c**

FRESH Green Peppers lb. 38c
INDIAN RIVER (RED OR WHITE) Grapefruit ea. 17c
FRESH JUICY Lemons ea. 9c

'PRICE BLASTER' COUPON
CO-OP

SHORTENING

3-lb. can **1.58** With this coupon and add'l \$10.00 food purchase
CO-OP Effective Dec. 13-19, 1978 Limit one per family

'PRICE BLASTER' COUPON
LIPTON

TEA BAGS

100-ct. pkg. **1.58** With this coupon and add'l \$10.00 food purchase
CO-OP Effective Dec. 13-19, 1978 Limit one per family

'PRICE BLASTER' COUPON
MARCAL

PAPER TOWELS

3 JUMBO ROLLS **\$1** With this coupon and add'l \$10.00 food purchase
CO-OP Effective Dec. 13-19, 1978 Limit one per family

'PRICE BLASTER' COUPON
FRANKS

TRIPLE COLA

1/2-Gal Btl. **48c** With this coupon and add'l \$10.00 food purchase
CO-OP Effective Dec. 13-19, 1978 Limit one per family

U.S.D.A. CHOICE BEEF WHOLE

BONELESS BOTTOM ROUNDS

lb. **1.37**

Bottom Round Roast lb. 1.57

U.S.D.A. CHOICE BEEF WHOLE

BONELESS N. Y. STRIP

lb. **2.56**

FULL RIB HALF

Pork Loin Roast lb. 1.28

LOIN HALF lb. 1.32

CENTER CUT

Rib Pork Chops lb. 1.77

BIRDSEYE

COOL WHIP

9-oz. ctn. **58c**

BIRDSEYE Fordhook Lima Beans 10-oz. pkg. 48c

MRS. PAUL'S Sweet Potatoes 12-oz. pkg. 58c

LAND O' LAKES

BUTTER 1.48

1-lb. qtrs.

PILLSBURY Crescent Rolls 3-oz. pkg. 58c

KRAFT PHILADELPHIA Cream Cheese 8-oz. pkg. 67c

COMBINATION PORK

LOIN CHOPS

lb. **1.77**

U.S.D.A. CHOICE BEEF

FLANK STEAK

lb. **2.16**

FRESH PREMIUM (90% LEAN 10% FAT) Ground Beef lb. 1.55

FRESH WHOLE Pork Butts lb. 1.17

FRESH Pork Steak lb. 1.36

CO-OP Sliced Bacon 1-lb. pkg. 1.55

16-oz. N.R. BOTTLES

Pepsi-Cola 6 PAK 1.29

ROCKVILLE & KENSINGTON \$1.41 including Mont. Co. Tax

LUCKY LEAF

Applesauce

50-oz. jar **98c**

KRAFT

Mayonnaise

QUART JAR

1.18

CO-OP (WHOLE OR STRAINED) 16-oz. can Cran. Sauce 98c

DEL MONTE CUT OR FRENCH STYLE 16-oz. can Green Beans 35c

Del Monte (Whole or Cream Style) 16-oz. can Yellow Corn 35c

PRICES EFFECTIVE DEC. 13-19, 1978

We reserve the right to limit sale items to 3 units per customer.

GREENBELT CO-OP

121 CENTERWAY

Open Daily 9-9, Sunday 10-6