

Greenbelt News Review

AN INDEPENDENT NEWSPAPER

Volume 41, Number 23

GREENBELT, MARYLAND

Thursday, April 27, 1978

Grading Permit Filed for a Portion Of Springhill Lake North Development

by Elaine Skolnik

All systems are go for the development of the Springhill Lake North commercial office complex. With the approval of the record plat for Parcel D by the Maryland National Capital Park and Planning Commission (MNCPPC) on April 13, all the required preliminary subdivision plans and record plats have been approved for the tract (parcels A,B,C,D).

Slated for the 31.57 acre property are five 10-story office buildings with a combined gross floor space of 500,000 square feet. A 200-room motor inn and convention center with restaurant facilities is also proposed. The complex, located north of the Beltway and west of Kenilworth Avenue behind the State Highway Administration building (SHA), is expected to have an estimated market value at full development of \$23.7 million.

Developers Greenbelt Associates hope to begin construction in June. A grading permit was filed with the Bureau of Licenses and Permits on April 4 and has been approved by MNCPPC and the county Public Works Department. The county Engineering Department must also sign off on the permit before clearing operations can begin.

No building permits will be issued, however, until conditions set down by MNCPPC for (1) the improvement and widening of Kenilworth Avenue from the end of the existing permanent improvements (dualization) to Ivy Lane (the access road into Springhill Lake north) and (2) provision for an adequate landscaping program for the property abutting the Capital Beltway, are firmed up.

Roads

In August 1974, MNCPPC approved the preliminary subdivision plans for parcels A,B, and C provided certain changes were made, such as requiring an 80-foot right-of-way for the Ivy Lane entrance to the tract at Kenilworth Avenue. The proposed right-of-way now narrows to less than 80 feet at this intersection.

The problem is that an 80 foot right-of-way would either have to cut into the city cemetery property or into the acreage zoned for a gas station. According to SHA and Greenbelt Associates, the solution appears to be the utilization of part of the land where the state has its salt stored. The developer will relocate the salt storage teepee

Ride-A-Bike on Sunday

by Eileen Labukas

Mayor Piiski will lead off the first group of riders in the annual Greenbelt Ride-A-Bike for the Retarded this Sunday April 30 (rain-date May 7) at 12 noon at the Youth Center. Other members of Council will join him on the bike hike.

Harvey Geller, longtime Greenbelt resident, has added his name to the list of 100 mile riders. This brings the total of long distance riders from Greenbelt to a record high of 5. Individuals, organizations and local businesses are encouraged to support these riders by serving as sponsors. Call the Recreation Department for details.

The drawing for the winner of the participants' bike raffle will be held at the close of the event. Each rider automatically receives one chance on the 10-speed deluxe Schwinn, and additional chances can be earned for each full page of sponsors. Pam Valente (11) Plateau Place was the lucky bike winner last year.

Pledge forms can still be obtained from the library, the schools and the city recreation centers.

to the north.

The Greenbelt city council also requested a provision for a right-of-way along the western edge of the parcel for the eventual connection of the north and south portions of Springhill Lake. (The SHL apartments and the SHL industrial tracts are located south of the Beltway.) With a Metro station proposed for the industrial tract, this connection is considered vital by the city. The thinking by the State Highway Administration and Metro officials has been to provide access to (and from) the Metro Station from the Beltway only to those commuters from the west (Montgomery County). Commuters from the east (Greenbelt) headed for the Metro Station would take Greenbelt Road (most passing through the Kenilworth intersection) to Cherrywood Lane, then travelling along the western edge of the Springhill Lake Apartment development. The record plat for Parcel D includes a reservation for a possible Perimeter Road.

City Opposition

Council has generally opposed sewage allocations for Springhill Lake North, Greenbelt East and the Golden Triangle because of the aggravated traffic situation that now exists at the Kenilworth Ave.-Greenbelt Rd. intersection. While project planning for the intersection's improvement is underway, no construction can be expected until after 1982, when funding for rights-of-way and construction is expected.

The city's position is that until improvements are accomplished:

County Council Endorses Metro Route to Greenbelt

County Council has laid to rest perhaps its thorniest Metrorail question by voting 7-3 to endorse full construction of the 'E' Route out to Greenbelt as the preferred alternative rather than terminating the northern alignment inside the District of Columbia. The vote came April 18 as Council was asked to choose one preferred routing as the last step in the system-wide Alternatives Analysis.

The decision on the 'F' Route in Southern Prince Georges was not as clear cut. Council asked for a one-week delay to study the cost and feasibility of building a three-mile connection between the Branch Avenue alternative, which would end at Branch Avenue and Auth Place inside the Beltway, and the Rosecroft option which would end beyond the Beltway at Rosecroft Raceway.

The Alternative Analysis Steering Committee is to submit a preferred Metrorail system, whether 100 miles or less, to the U. S. Urban Mass Transit Administration by the beginning of May.

There never has been much question about citizen support for a Metrorail system in southern Prince Georges.

The situation has been vastly different in northern Prince Georges, where College Park and University Park citizens have appeared in large numbers to question the viability and necessity of the Metrorail in their communities. In the final analysis, the County Council majority disagreed with their opposition, pointing to heavy traffic congestion, the dwindling supply of highway dollars and energy sources and finally Metro's economic development potentials as arguments in favor of mass transit.

Councilman Francois summed up the Council's support of the Metro- See METRO, page 4, col. 1

(1) development is premature; and (2) it will be irresponsible for the county government to allow further development, especially of office buildings which generate peak rush-hour traffic.

The combined gross square footage proposed for office buildings on the three tracts is 1,150,000 (SHL North - 500,000, Triangle 450,000, Greenbelt East 200,000). According to the county's Economic Development Program Committee, some 4,600 office workers would be employed; 2,000 at SHL North, 1,800 at the Triangle, and 800 at Greenbelt East.

The city council has also pointed out that with the completion of the 1,193-unit Greenbriar/Glen Oaks development, the 700 Windsor Green Townhouses, and other residential developments on Greenbelt Road East, congestion at the Kenilworth Ave.-Greenbelt Road intersection will be further exacerbated.

In evaluating the proposed commercial complex, the Economic Development Program Committee noted that the numerous projects with which the developers (Albert Small, Theodore Lerner, Harold Kramer, Edward Perkins, Morton Funder, Ralph Ochsman) were associated—Tyson's Corner, Landover Mall, and Springhill Lake Office Building—suggest the developers are highly qualified from a marketing and financial perspective to successfully undertake the project.

Zoning

The proposed Springhill Lake North development is in conformance with land use recommendations of the College Park-Greenbelt and Vicinity Master Plan. In 1969 MNCPPC and the city supported the rezoning of the property from R-18 (21 apartment units an acre) to the commercial zone because Greenbelt was already top-heavy in high density apartment developments. (Greenbelt Associates developed the 3,000-unit Springhill apartments.)

DEADLINE CHANGE

Starting next week, the deadline for all display advertising will be Monday, 10 p.m., at the News Review office. The office will be open on Mondays between 8 and 10 p.m. starting May 1.

The News Review office will continue to be open on Tuesdays between 8 and 10 p.m. The deadline for news items and classified advertising will continue to be 10 p.m. Tuesday.

WHAT GOES ON

Sun., April 30, 12 noon Ride-A-Bike for Retarded, Youth Center

Mon., May 1, 8 p.m. City Council Meeting, Municipal Building

Wed., May 3, 8 p.m. City Council Workshop on Recreation Organizations Budget, Municipal Building

Thurs., May 4, 7:45 p.m. G.H.I. Board Meeting, Hamilton Pl.

Police Exhibits May 4-6 At Beltway Plaza Mall

Exhibits are being prepared for displays at the Beltway Plaza May 4 through 6 in honor of Police Week. Residents are invited to see how Greenbelt's police department works for them. The Prince Georges County Police, Maryland State Police and Maryland-National Capital Park and Planning Police will also have displays.

Pros and Cons For Every Item Discussions Last Ad Infinitum

by Leta Mach

Perhaps Greenbriar resident David Andrews best summed up the dilemma facing the Greenbelt City Council at the April 24 public hearing about the site of the proposed Baltimore-Washington Parkway overpass when he said, "You gentlemen have a hard row to hoe . . . , you have people sniping at you from all directions."

About 145 people turned out at Eleanor Roosevelt Senior High School to hear 31 speakers talk about the controversial site of the overpass. The speakers, some representing groups, were almost evenly divided—17 for Gardenway and 13 for the Mandan Road pedestrian-bicycle overpass. Some of the questions discussed involved the need for safety in crossing the Parkway, the location of the overpass, and the problem of vandalism.

Aided by overhead projections of maps and diagrams, City Manager James Giese compared the two site locations. Federal funds are authorized for the overpass in the interests of the safety of Eleanor Roosevelt High School students, who have been cutting across the Parkway. However, it is up to the city to name the overpass location. Originally four sites for the overpass were studied, but after discussions at council sessions and meetings with the Board of Directors of Greenbriar Phase I and Phase II there did not appear to be any serious objections to the preferred site at Gardenway.

Gardenway Route

Giese explained that the city was acquiring property from Gardenway to the Baltimore-Washington Parkway for parkland. The access path would cut through this property. However, because 75% of Greenbriar Phase I, as their by-laws require, did not approve the

easement for the overpass, the city would be forced to go to condemnation proceedings to obtain the use of land for the Greenbriar path.

Mandan Route

An alternate site, at the end of Mandan Road in Greenbriar, would require the use of a right of way on Board of Education land on the western side of the Parkway. However, the Mandan Rd. site would be more expensive than the Gardenway route since more fill would be needed for an access ramp and the bridge would also be longer because of a wider median strip at that point on the Parkway.

James Smith, President of Greenbelt Homes, Inc., read a statement from the GHI board of directors urging the selection of the Gardenway route. It urged that consideration of the Mandan Road site be terminated on the grounds that the Parkway crossing hazards would not be eliminated since "only a few students are likely to use the overpass at this location" and a large portion of Greenbriar "would be adversely affected by the great temptation for students to take short cuts through their property" if the Mandan Rd. overpass were chosen.

Greenbriar Position

William E. Ayers, president of the Greenbriar-Phase I board of directors, expressed concern about vandalism, destroyed trees and shrubs, and littering. He felt there was less chance of these problems with the Mandan route because, although the route covers more of Greenbriar property, it does not come as close to the buildings and "there are wide open roads to use." However, other speakers suggested that students would take a shortcut through Greenbriar - Phase II from the Mandan route. Ayers stated that if the bridge was for the benefit of east Greenbelt, then the Mandan site is the only logical choice since it is centrally located, especially when taking future development into consideration. He predicted that in the event of condemnation the possibility for cooperation between Greenbelt and Greenbriar would be severed. In that event, he asked for increased police protection and no fence or wall along the path, since this would divide Greenbriar. Ayers approved White's suggestion that shrubbery could be used to delineate the path instead. Ayers concluded by expressing the feelings of many Greenbriar residents, "This thing is very emotional to us."

Indeed, Peggy Johnson from Greenbriar echoed the feelings of many saying that emotions had gotten out of hand. During the evening, analogies were drawn with Omar Torrijos's threat to destroy the Panama Canal and Hitler's argument. See EMOTIONS, p. 8, col. 1

Woman's Club Holds Sidewalk Sale 28, 29

The Woman's Club of Greenbelt will hold a sidewalk sale this Friday, April 28, from 9 a.m. to 6 p.m. and Saturday, April 29 from 10 a.m. to 2 p.m. in the Center mall. The sale features books, plants, white elephants and clothing, as well as a bake sale on Saturday.

Center School Yard Sale

Center School Yard Sale will be held, rain or shine, on Saturday, April 29 from 9 a.m. to 4 p.m. Weather permitting, the sale will take place under the trees in front of the school. If it rains, the sale will be inside. Donated items can be dropped at the school office or call 474-8479 for pick-up. Materials may be sent to school on Friday or brought on Saturday morning. Baked goods are needed. Volunteers who can work for an hour or more please call.



AGENDA

REGULAR MEETING OF CITY COUNCIL

Monday, May 1, 1978
8:00 P.M.

I. ORGANIZATION

1. Call to Order
2. Roll Call
3. Meditation
- Pledge of Allegiance to the Flag
4. Minutes of Meetings
5. Additions to Agenda by Councilmen and Manager

II. COMMUNICATIONS

6. Presentation
7. Petitions and Requests
8. Administrative Reports
9. Committee Reports

III. OLD BUSINESS

10. Baltimore-Washington Parkway Overpass Site Selection
11. METRO Bus Service - R-15 Express Service and F-6 Routing
12. Re-zoning Request A-9394, Greenbelt Commercial Center - Advisory Planning Board Report #197 and Park and Recreation Advisory Board 6-78
14. North End Elementary School - Park and Recreation Advisory Board Report 5-78

IV. NEW BUSINESS

15. Resolution to Transfer Funds - First Reading
16. Appointments to Park and Recreation Advisory Board
17. Snow Removal

V. MISCELLANEOUS

NOTE: This is a preliminary agenda subject to change.

GREENBELT NEWS REVIEW

AN INDEPENDENT NEWSPAPER
ALFRED M. SKOLNIK, PRESIDENT, 1959-1977
Editor: Mary Lou Williamson, 474-4900

Associate Editors: Sandra Barnes, 474-5310; Barbara Likowski, 474-8483
STAFF
Betty Aggson, Bob Alfaro, Alexander Barnes, Suzanne Batra, Edith Beauchamp, Virginia Beauchamp, Linda Braun, Marilyn Brinkley, Margaret Butler, Corrine Comulada, Theresa Crowley, Judy Goldstein, Marian Harzison, Janet James, Michael Jones, Bernice Kastner, Sid Kastner, Martha Kaufman, Katherine Keene, Dorothy Lauber, Loretta Levesque, Larry Levine, Leta Mach, Jean Magee, Irene Menassa, Roberta McNamara, Linda Orenstein, Pearl Siegel, James Simon, Elaine Skolnik, Joanne Tucker, Jenn Turkiewicz, Otilie Van Allen.

Business Manager: Lynette Johnson; Circulation Manager: Mike Jones, 474-8001
Springhill Lake Circulation: Barbara Clawson, 474-4541
Published every Thursday by Greenbelt Cooperative Publishing Assn., Inc.
BOARD OF DIRECTORS
Pres., Elaine Skolnik; Vice Pres., Sid Kastner; Secy., Barbara Likowski; Treas., Virginia Beauchamp, Sandra Barnes.
MAIL SUBSCRIPTIONS: \$12.00 per year. Advertising and news articles may be mailed (Box 68, Greenbelt); deposited in our box at the Twin Pines Office; or delivered to the editorial office in the basement of 15 Parkway (474-4131), open after 8 p.m. Tuesday. Deadline is 10 p.m. on Tuesday.

Volume 41, Number 23

Thursday, April 27, 1978

Kill the Amendment

To the Editor:

I urge every Greenbelt Homes, Inc., member to attend the May 10 annual meeting and stay at least long enough to be sure that the proposed bylaw amendment forbidding any increase in members' monthly charges without a vote at a special annual budget meeting is killed, at least in its present form.

Years ago I read that, because under the laws of the Polish parliament nothing could be done unless it had a unanimous vote in favor, Poland could have no effective government and was torn apart repeatedly and divided by surrounding monarchs. This doesn't mean democracy is bad — I love it and would not live under a dictatorship. It does mean that at some point you have to give a leadership some authority to act.

The proposed amendment would place in the hands of a few determined members the power to block any increase in charges, however vital, merely by disrupting the one annual budget meeting provided under the amendment so badly that no vote can be had on a board-recommended budget. They won't need a majority to "win" — to prevent needed increases being enacted. All they'll need is to prevent majority action. And when they win, only the real estate interests who take over GHI's bankrupt operation will really win. We will all lose.

Bettie Denson, chief public advocate for the amendment, admits that it "presupposes" that members "will attend the budget meeting each year and consider fairly the needs of the corporation and vote for any just increases that are needed . . . that we would study the budget plan before going to the annual budget meeting in a constructive and understanding spirit . . . we must not let lack of funds paralyze . . . GHI." (News Review, April 20)

That's a wild "presupposition" if ever I read one. How many members do read and study what they've been sent, carefully, cover-to-cover? Many, but not all. How many attend budget meetings yearly, as they have a right to and have always been welcome to, when the board and management prepare the budget over a period of several meetings? Darned few.

Denson may well be sincere in what she said but she won't persuade some of us that enough members will behave that way to make her amendment safe.

Too many of us have been to too many GHI meetings disrupted by a coterie who were determined not to listen to explanations, not to permit others to listen either, not to let the personal reputations of those we'd elected to the board or of employees or of those who didn't agree with their attacks go unblemished, not to let business be conducted. We remember too many pre-meeting, door-to-door, slanderous, rumor-mongering scare campaigns.

We remember charges of law-breaking laid by certain members against the GHI leadership, and these accusers demanded that needed actions not be taken in GHI while the authorities weighed the charges, and they didn't even publicly apologize to the accused or to the membership at large when their charges were discarded by federal and state authorities alike.

We remember many other disruptive tactics. I would not place a loaded automatic machinegun in the hands of a terrorist as he or she steps into a full passenger airliner. Nor would

Ballots, Budgets, Costs

To the Editor:

Howdy. This is ol' Jack again. I would be delighted to answer Janet M. James, chairperson of the nominations and elections committee, "Why not paper ballots?"

The first, and to me, obvious answer is: if only one member of the co-op feels that there could be the slightest possibility of error with paper ballots then voting machines should be used. (And voting machines appear to be less able to grow tired and bored.)

Secondly, if more than 300 people show up to vote on an amendment to the bylaws to cut the boards' purse strings and bring some communication accountability to bear, the nominations and elections committee will be quite sufficiently occupied.

Thirdly, there may be a crowd when GHI folks realize a few budget facts. The management budget for 1978 for 5 people for salary and wages for GHI is \$93,413. The administration-general government general fund for the city of Greenbelt for 8 people is \$116,200. The whole city of Greenbelt is administered for only \$22,787 more a year than GHI, at an average cost per administrative employee of \$14,525. On the other hand, the cost to run GHI is \$18,562 per administrative employee. For \$4,157 a piece more at GHI, I expect a bigger budget book than the city's; not a 15 page handout. The budget book of the City of Greenbelt is an outstanding document to a well-run city.

Fourthly, the management section of GHI has been very nice to me. Mr. Breashears, Mr. Kopstein and their staff have been great in cooperating with me as I continue my search for answers. And one answer that's kinda forming now is that management is following the direction of the board. It is the board that is out of step and out of touch with the membership! Yeh! I'm gettin' involved! Big deal! It's enlightened self-interest, man. A lot of people living here, are here 'cause it's cheap. They like their "old" homes and they didn't come here to participate in a co-operative. And I don't blame them. In my opinion, many people are tired of the "we know what is best for you" line. They resent fancy answers that make them feel stupid for raising a question. If you want people to stay or get interested in the operation of the co-op, then the leadership is going to have to come down to our level.

One line in the city budget book is: "Overall, the City's financial health is good." I want to make sure GHI's is too.

Jack Steiffer

I put this amendment into the hands of one kind of person we have in our membership — fortunately a minority — who one time can sue the corporation (without success, but expensively), another time charge lawbreaking, at other times impute crookedness all without basis; who can complain of having been given no information when they've been given it repeatedly, and who can disrupt shamelessly for years.

I urge: Come to the meeting and, if it is on the agenda, kill this amendment. (It shouldn't be on the agenda at all, partly because it was defectively worded.)

There is another bylaw amendment, I have heard, to add one hour to the voting period the day after the annual membership meeting. If well-written, this is a good amendment, helping late-working members to be able to vote.

I also commend the Nominations and Elections Committee for having the sense and guts to use a ballot box when needed; voting machines can be as accurate or inaccurate — or crooked — as voting with paper ballots.

Mat Amberg

REMINDER

This is to remind readers of News Review policy with respect to the printing of campaign and election material. The newspaper will not publish in its last edition preceding an election letters to the editor and similar materials that inject for the first time highly controversial issues and charges. Last minute introduction of such material without an opportunity for refutation is considered an unfair campaign practice.

Letters to the editor and other copy on election issues must be submitted by 9:30 p.m. Tuesday evening, so as to give the News Review editorial board sufficient time to review content.

Overpass vs. Trespass

To the Editor:

We are told that 40% of the students would continue to use the shortcut across the Parkway if the overpass were built at Mandan Road. 48% of tax-paying Greenbriar (phase I) residents don't want the Gardenway overpass. Why then should law-abiding citizens allow illegally trespassing persons to dictate where an overpass should be built? Residents should not have to attend a public hearing to plead and grovel for an alternate route on a proposed overpass; we should be demanding that the Greenbelt city officials enforce the existing trespass laws. The Mandan Road route might necessitate walking an extra block (at most two) for some Greenbelt residents. Is that too much to ask someone to do out of respect for law and order?

Richard W. Ley

Telephone Reassurance

To the Editor:

St. Hugh's Ladies of Charity are thinking about organizing a telephone reassurance service for the elderly and handicapped living alone in our community. Briefly, this would mean making telephone calls at intervals to those who want this service to make sure they are well and have not had an accident. In order to evaluate the need or desire for such a service, the ladies would appreciate comments or suggestions from the people of Greenbelt.

Ladies of Charity - T.R.S.
135 Crescent Road
Greenbelt, Md. 20778

Remembering "Beno"

To the Editor:

On March 31, great sadness and grief came over the Ladies Auxiliary to the Greenbelt Fire Department. Our flags were lowered at half staff and a black drape hung across the front of the fire station in memory of Mercedes Reynolds.

Mercedes Reynolds, so lovingly known as "Beno" by her close friends, will long be remembered by all who are associated with the Greenbelt Fire Department.

We lost a member who dedicated over 18 years to volunteer service at Greenbelt Fire Department. Mercedes "Beno" Reynolds received one of the highest awards in a fire prevention song writing contest that was carried throughout the state of Maryland. The contest was entered by many members of ladies auxiliaries throughout the state. These awards are presented at Maryland State Firemen's Convention at Ocean City in June of each year.

"Beno" will be greatly missed as will her laughter, kindness, dedication, hard work and her "zingers" that she so often contributed to fondly remembered fun times, which are MANY.

May her love, energy, zest, dedication and thoughtfulness be an inspiration to each of us who had the privilege of being her friend and co-volunteer.

Our deepest sympathy and blessings are extended to her family. We love you Eeno — till we meet again.

Greenbelt Ladies Auxiliary,
Greenbelt Volunteer Fire Dept.

Baha'is Celebrate Festival

All are welcome to attend and share in the celebration of the festival of Ridvah on Saturday, April 29, 8 p.m. at the Greenbelt Youth Center. A talk on the significance of Ridvan will be given by Tom Thompson of Columbia, Md. Thompson, a long time Baha'i is Associate Professor of Human Behavior at Morgan State University and a regular commentator over National Public Radio and also a regular guest on Washington's Channel 7 morning talk show "A M Washington".

Following the talk, music will be presented by Michele Garber, noted folk singer and guitarist from Falls Church, Va.

April 21 is the start of a 12-day festival period known to Baha'is as Ridvan, the time during which the Baha'i Faith was first proclaimed publicly in 1863. Baha'u'llah the Prophet-Founder of the Baha'i Faith, taught that all peoples in the world are equal and should come together in a worldwide system to ensure peace and well being.

On the last day of the Festival, May 2, the entire Greenbelt Baha'i community will dine together at a local restaurant.

On April 21, 1978, the Baha'is of Greenbelt met to elect a nine-member local spiritual assembly to guide the affairs of their community. The newly elected officers are Jim Sturdivant — Chairman, Greg Billington — Vice Chairman, Jim Fischer — Secretary and Khai Dolinh — Treasurer.

ERSH Graduation

Eleanor Roosevelt Senior High School will hold its first graduation exercises on Wednesday, June 7, 1978, at 2 p.m. at Cole Field House.

ST. JOHN'S CHURCH

Episcopal
Baltimore Blvd. at Powder Mill Rd., Beltsville
8 a.m. Holy Communion
10:30 a.m. Morning Prayer (Holy Communion 1st Sunday)
10:30 a.m. Sunday School
Rev. John G. Bals, Rector

MISHKAN TORAH

Ridge & Westway
474-4223
PASSOVER SERVICES
Rabbi Kenneth Berger
Fri., Apr. 28, 8 p.m.
"Concepts of the Holiday"
Sat., Apr. 29, 9:30 a.m.
Yiskor

Greenbelt Community Church

(United Church of Christ)

Hillside and Crescent Roads - Phone 474-6171 (mornings)

Sunday 11 a.m. - Worship Service and Church School

Nursery provided at 2B Hillside

Rev. Sherry Taylor and Rev. Harry Taylor, co-pastors

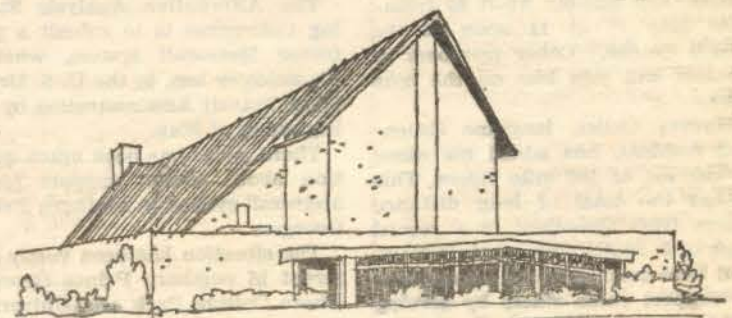
TO WHOM IT MAY CONCERN !!

You are invited and welcomed to meet with us each week.

GREENBELT BAPTIST CHURCH

474-4212

Bible Study for all ages (Sun) 9:45 am
Sunday Worship 11:00 am & 7:00 pm
Mid-week prayer service (Wed) 6:00 pm
For bus transportation, call Church office 8:30-12:30 weekdays



Holy Cross Lutheran Church

6905 Greenbelt Road

Worship Services: 8:30 and 11:15 a.m.

Sunday School: 9:50 a.m.

Weekday Nursery School: 9-11:30 a.m.

Edward H. Birner, Pastor

Phone 345-5111

METRO Fare Rise Options

by Mike Jones

The Washington Metropolitan Area Transit Authority will hold a public hearing on Thursday May 4 at 7:30 p.m. in the Maryland University Center for Adult Education for the purpose of discussing proposed fare increases for area metros and metrorail lines.

Proposals that affect Greenbelt include the institution of zone charges for the bus portion of bus-rail trips from Washington to the Maryland suburbs. This would amount to an additional 50 cents paid on a bus from the Armory to the city during rush hours and an additional 20 cents at other times.

While some rail fares are increased, passengers on the blue metrorail line would pay the same rush hour fare from the Armory station to points in Washington. Fares between the Armory station and points in Virginia would be increased by five cents per trip. Non-rush hour rail fares have been proposed to be set at a flat 50 cents, regardless of the distance travelled. On the red rail line, the fare from Silver Spring to points in the downtown Washington area would be increased by five cents in rush hour.

Another proposal to be discussed at the hearing is the institution of a bus-rail pass, which would be available for sixteen dollars. The pass would be valid for unlimited bus transportation between D.C. and Maryland, and would have five dollars of encoded rail value on it for use in the two week period. It should be noted, though, that a commuter using metrorail on a round-trip basis every weekday for a two week period would pay at between eight and eleven dollars for rail fare in that period.

According to Metro, the rail amount on the farecard would be used up (using addfare if necessary), then another farecard would have to be purchased. The card could not be traded in at the farecard machines, because the bus pass would be lost. Entrance and exit gates would be set so that they would not keep bus passes, even if they had no rail value.

Even with the added rail expense of three to six dollars, a commuter would still pay three to six dollars less in a two week period travelling between downtown Washington and Greenbelt.

Persons wishing to testify are requested to furnish, in writing, their name, address, telephone number, and organization affiliation (if any) to Mr. Delmer Ison, Secretary-Treasurer, Washington Metropolitan Area Transit Authority, 600 Fifth Street N.W., Washington, D. C. 20001 by Friday, April 28, or to call 687-1092.

Dial 911 for Fire/Rescue

by Wayne Lewis

The past few months have been busy for the Greenbelt Fire Department and Rescue Squad. Several members took training classes to improve their skills and knowledge in safety, fire prevention, rescue, operational procedures, etc. Classes in Aircraft Crash & Rescue, Hydraulics and Pumps, Basic Firefighting, Fire Photography, Chief Officer Seminars and Advanced First Aid are a few of the many courses attended.

The next month or two will offer classes in Forcible Entry, Industrial Firefighting, Smoke Detectors, Elevator Rescue, Advanced First Aid, Building Construction, plus several others.

In the near future, this column will attempt to answer questions on "WHY WE DO THE THINGS WE DO?" Sometimes we are asked why we act in certain ways while on the fireground or at the scene of an accident. The first question to be answered is "Why do we blow the siren and make our presence known to everyone at 4 a.m. when there are few vehicles on the roadways?" According to the Maryland Motor Vehicle Law, fire and rescue vehicles responding to an emergency call MUST MAKE USE OF VISUAL AND AUDIBLE SIGNALING DEVICES (lights and sirens).

Legion Auxiliary Contest Winners

The American Legion Auxiliary, Greenbelt Unit #136, recently sponsored an essay contest on "Why I Thank You, America," in which four local schools, Springhill Lake, St. Matthias Apostle School, St. Hugh's and Thomas Jefferson Jr. High, participated. Awards were given at a Joint Americanism Program held April 20 at the American Legion Post Home in Greenbelt. Two hundred people were present including teachers and principals from three of the four schools: American Legion Auxiliary Department President, Mrs. Norris Walbert; American Legion Auxiliary National Executive Committeewoman, Mrs. Clayton Varner; American Legion Auxiliary Department 2d Vice President, Mrs. Edwin Thompson; American Legion Auxiliary Southern Maryland District President, Mrs. Barry Herr and guest speaker, American Legion Department 1st Vice Commander, James R. Thomas.

Prizes were awarded by Greenbelt Unit President, Mrs. T. T. Newsome, to the following Greenbelt youngsters: GROUP I (Grades 4 & 5): 1st Place - \$25.00 Savings Bond to Jennifer Leslie, Springhill Lake; 2nd Place - \$10.00 to Sunday Lynn Smith, Springhill Lake; and 3rd Place - \$5.00 to Marc Allen, Springhill Lake. Honorable mentions with

Beautification Awards '78

The Prince Georges County Beautification Committee announces that all citizens of the County are invited to nominate a business, school, public agency, civic or youth group or even a next-door neighbor for recognition in the County-wide AWARDS '78 program.

The first person to nominate a project which becomes a "winner" in any of the six categories, that individual and the winner will be invited to the AWARDS '78 ceremony and festivities to be held in October. (The nominator may remain anonymous.) All projects will be judged by qualified judges from the National Capital Area Federation of Garden Clubs.

Nominations may be sent to Prince Georges County Beautification Committee, County Administration Building, Upper Marlboro, Md. 20670. Or, call 952-4270.

Certificates of Participation, Group I, were awarded to Kelly Jo Barbour, Joe Lynch, Brad Salazar and Orna Tamches. A special Certificate of Participation was awarded to Lori Wiener, for an outstanding 800-word poem on the essay topic. GROUP II (6, 7 & 8th Grades): 3rd Place - \$5.00 to Lisa Corey, St. Hugh's. Certificates of Participation, Group II were awarded to Joanne Brooks, Joni Jackson, Ginger McKinney, Tina Peacock and Donna Robey.

Paint Branch Montessori School

Learning by Doing

3215 Powder Mill Road, Adelphi, Md. 20783

The Paint Branch Montessori School is now enrolling children for its half and full day programs.

Pre-School & Elementary Programs

You are cordially invited to make an appointment to observe our classes.

For further information, please call Betsy Yeomans at 937-2244, or Patricia Barshay at 474-5170 after 4 p.m.

Phone 345-5443

Pat-Ern Ceramics

Greenware - Classes - Firings - Workshop

Complete Line of Duncan Products

Mon. - Thurs. Fri. & Sat.

10-4, 7-9 10-4

Now Available-Macrame Hangers & Pots

183 CENTERWAY GREENBELT, MD. 20770



Per Annum

PASSBOOK RATE

from day of deposit paid quarterly

Twin Pines Savings & Loan Assn.

105 Centerway Greenbelt, Md. 20770 474-6900

HOURS

Mon.-Thurs. 9-6
Friday 9-8
Saturday 9-12



Maryland Savings-Share Insurance Corporation

(An Agency of the State of Maryland)

Insures each account to \$40,000.00

Ask about our savings certificate plans:

6 1/2% per annum for a \$1000 minimum deposit when held until one year maturity.

7% per annum for a \$2000 minimum deposit when held until one year maturity.

7 1/2% per annum for a \$4000 minimum deposit when held until four year maturity.

NOTARY SERVICE (free to account holders)

MONEY ORDERS 20c up to \$500

XEROX COPIES 10c

Need Home Financing? Give us a call

THANKS to all the Citizens who have supported the AMBULANCE CLUB drive this year. However, many families in the community have not as yet joined. We would like to see 100% PARTICIPATION in our community.

Help us to Help You

JOIN YOUR AMBULANCE CLUB

— Greenbelt Volunteer Fire Department and Rescue Squad

GHI MEMBERS ASK QUESTIONS ON REHABILITATION

The following questions have been excerpted from letters members have sent to GHI regarding the proposed rehabilitation program. Management has made its recommendations to the Board of Directors. The Board is now in the process of discussing these recommendations and those made by the consultants on rehabilitation.

Will we have to pay for storm windows a second time since we have already installed them?
No. Members who have storm windows would receive credit for these improvements.

Will we be forced to put plywood siding on our homes since we are satisfied with the more fire-resistant asbestos?
The kind of new siding, if any, has not been decided. No. The manager, in his report to the Board on rehabilitation, has in fact recommended against new siding for the frames.

Will we have to pay for those who want to install sliding doors and picture windows?
No.

Why should we pay for sidewalks to connect North End to the inner walkway system when we don't even have a sidewalk for our court?
The Manager is recommending that membership hearings be held on expansion of parking courts and inner walkways.

Isn't it unrealistic to expect individual residents to be able to carry out the type of rehabilitation needed?
Yes. We are hopeful that we can develop a co-operative plan that the majority of the members will approve and support.

Why did the consultants recommend plywood siding over the more maintenance-free aluminum siding?
Probably cost, future maintenance, insulating value and appearance (a matter of individual taste) influenced their conclusions.

Was any consideration given to the 312 members who have not yet "burned" their mortgage?
Payments on the mortgage and rehabilitation could mean a hardship for some. However, the Board is determined to hold the increase in monthly charges to no more than 10%—including rehabilitation.

Is increased resale value the main reason for the rehabilitation program?
No. The main reason for rehabilitation is to reduce future energy and maintenance costs as well as to maintain the integrity of the structures.

Isn't heat loss through windows the only rehabilitation project necessary at this time?
Heat loss through the windows is a major problem. Weatherstripping and insulation of walls in the frames will also greatly affect the heat loss.

What happens if the members approve a rehabilitation program and then find out Federal financing is not available?
When the Board proposes its program to the membership, the financing conditions, including governmental assistance will be spelled out.

Members who have questions or suggestions may write to GHI Board President, James Smith, at the GHI offices on Hamilton Place.

paid ad

METRO continued from p. 1
rail system when he noted, "We will not rule out commuter rail if we cannot afford to build Metro. But commuter rail cannot do the job that needs to be done. The first choice is Metro. Enhanced commuter rail is the second choice by far."

Council's endorsement of the modified ARS line for the 'E' Route, running along the B&O Railroad Tracks to a terminal in Greenbelt, came only on the stipulation that a regional financial agreement can be worked out to Prince Georges satisfaction.

All Metrorail participating jurisdictions are to sign a financial compact, detailing who will bear the capital and operating costs of the rapid rail system, by August 31. The financial compact could well be the last step in the nearly decade-old question of Metro or no Metro.

Councilmen Casula, Glendening and Bogley continued to vote against the extension of Metro to Greenbelt. Earlier the Council rejected on a 3-7 vote a motion to endorse the Columbia Heights terminus as the preferred alignment. The Columbia Heights option would have ended the 'E' Route inside the District of Columbia and substituted enhanced commuter rail in Prince Georges County.

In endorsing full construction of the 'E' Route, Council stipulated the College Park station should be omitted unless the station was redesigned or relocated to the city's satisfaction.

In opposing full construction, Glendening noted the 'E' Route is "one of the weakest lines" in the entire 100-mile rapid rail system. Councilman Casula followed up by observing that the year-long alternatives analysis "did not give the idea of enhanced commuter rail a fair shake. This route will not get anyone out of the automobile."

Speaking for the majority, Chairman White said, "The commuter rail holds no hope of ever serving this corridor fully or adequately. Mass transit is needed beyond just the work to home routine. Hopefully, citizens will use it for home

Our Neighbors

Named to the Letzeiser honor list in recognition of good citizenship and achievement during the annual Senior Awards Banquet on April 19 at the University of Oklahoma was Linda Kristof Webster of Greenbelt.

Sarah Kelley has been awarded a \$1000 academic scholarship by Texas Christian University. Sarah is a senior at Eleanor Roosevelt Sr. High and is presently serving as honor society president.

CHINA SHOW APRIL 29

The Annual Show of Hand Painted China, sponsored by the Porcelain Painters Guild of Md., will be held from 11 a.m.-4 p.m. on Sat., April 29 in the Greenbelt Library. The show will include displays, demonstrations and refreshments. Admission is free.

At the Library

"International Cinema," a series of memorable films continues on alternate Wednesdays during May at 7:30 p.m. in the Greenbelt Library. Admission is free. On May 3 the feature will be *Open City* (Italian, 1945.)

Registration for the Checker Tournament will be held from Mon., April 24 through Fri., May 5. The tournament, for grades 1-12, is scheduled for Sat., May 13, 1-3 p.m. in the Meeting Room.

to library trips, home to relatives and even home to hospital.

"The auto must be de-emphasized in this region if we are to survive. Air pollution is a fact and a dangerous fact at that."

Although the County Council has endorsed full construction as the preferred alignment on the 'E' Route, decisions on Metrorail still have a distance to go before construction. County Council still must hold public hearings on General Plans for the 'E' Route which will give a detailed mapping of the entire line. And a final vote is necessary on General Plans before construction. (P.G. Councilgram.)

GHI Will Vote for Board on May 10-11

Elections for the Greenbelt Homes, Inc. Board of Directors will take place at Center School, on Wednesday, May 10, and at the GHI offices on Hamilton Place, Thursday, May 11.

On Wednesday, which is also the night of the annual meeting, members may vote by paper ballot following presentations by the candidates. On Thursday, members may cast their ballot on voting machines from 7 a.m. to 7 p.m. The bylaws stipulate that "The annual meeting shall automatically adjourn at 7 p.m. on the day following that on which the election is begun."

GHI currently rents two voting machines from a private company at a cost of \$120 each plus pay for the services of a mechanic to insure that the machines are in proper working order. If the machines were to be moved from one location to another, a bonded carrier would have to be hired to transport the machines sometime between 11 p.m. on Wednesday and 7 a.m. on Thursday. According to Janet James, chairman of the Nominations and Elections Committee, the committee did not want to incur the additional expense of moving the machines or take the chance that the machines might be dropped or otherwise broken during transport. Members who wish to vote by machine must therefore cast their ballots on Thursday, May 11, at the GHI offices.

Notice — Notice — Notice

**New
DEADLINE
for
DISPLAY ADS
is
Monday 10 p.m.**

The Greenbelt News Review

RE-ELECT TO GHI BOARD OF DIRECTORS

Norman W. Weyel

Secretary of G.H.I.

Chairman of Parking Committee

Experienced Board member with a record of service on Finance, Member Complaints, Member Relations, Larger Homes, and Engineering and Maintenance Committees;

Pledged to

- Work for rehabilitation items that members can afford
- Continue working on members' parking problems
- Protect value of members' Home Investment
- Preserve the distinctive quality of Greenbelt living

Annual Meeting Wed., May 10th Voting Thur., May 11th



by authority of candidate

RE-ELECT

James W. (Jim) Smith to G.H.I. Board of Directors

As Board Member has worked to

- Develop cost effective energy saving programs
- Maintain the financial strength of GHI
- Retain the unique residential character of Greenbelt

Will pledge to continue working to keep GHI a GREAT PLACE TO LIVE.

Has Served GHI since 1965 — Board Committees — Treasurer and President

Annual Meeting Wednesday, May 10 and Voting 7 a.m. to 7 p.m. Thursday, May 11, 1978

by authority of candidate



KASH INC. REALTORS

Computerized Multiple Listing Service

345-2151

Want to pay \$55,000 for a \$50,000 house? Then wait until next year to buy! Want to have more equity in your home next year? Then buy now!

FHA and VA interest rates are still under 9% and you'll be surprised at how little cash from your savings can move you into your own home. Call now and let Kash Realtors help your family. 345-2151.

Planning to Buy A Home? Act Now!! Cozy & Comfortable

A real charming 1 bedrm. condo. in Greenbriar, located on terrace, and offering w/w carpet, washer, dryer, dishwasher, disposal, cent. a/c, also plenty of closet space. Priced under the market at \$25,900.

All Brick

3 bedrm, semi-col. in Riverdale, washer, dryer, new electrical system, utility room in basement, and patio in fenced yard with huge oak tree. Only \$39,900. No down VA or \$100 FHA. Call 345-2151.

Roomy Rambler

5 bedrm., 2 full bath brick and alum. in Lewisdale, rec. room, w/w carpet, patio, fenced yard and 3 car o.s.p. No down payment for vets at a bargain price of \$52,500.

In-Ground Pool

Split-foyer featuring 3 bedrm., 1½ bath, cent. a/c, rec. room, washer, dryer, dishwasher, patio, fenced yard and o.s.p. \$56,500. Call 927-1221.

VA Appraised \$66,500 (Bargain)

For this 5 bedrm, 2½ bath split-level home near High Point High School loaded with all the extras such as rec. room, cent. a/c, fully equipt kit. w/w carpet, patio and carport. No down VA and fast possession. Call 345-2151.

Farmette in the Country

3 bedrm. older home, with a lot that measures 37,500 square feet of level land that is fenced and surrounded by woods. Also zoned I-1 for industrial uses. Call for details, 345-2151.

Older Colonial

But in better-than-new condition. Truly an exceptional all brick home that offers all the modern equipment for fine living including new cent. a/c, fireplace, added-on family room, rec. room in basement, and plenty of large shade trees and beautiful shrubs in fenced yard. Located in hard-to-get Hyattsville Hills, all 927-1221 or 345-2151.

Fantastic Custom Built

Plenty of room to grow, plenty of room to entertain, or plenty of room to have your own professional office in lower level, this one-of-a-kind home has everything you would look for in your dream home and is located on 4/5 of an acre in Beltsville, on Montgomery Road. Call to inspect this home, you will be impressed. 345-2151.

Lakeside

The living room picture window of this all brick custom built rambler overlooks Greenbelt Lake. You can also enjoy the view from the rear yard which is ½ acre of beautiful shrubs and shade trees. This home features 3 fireplaces and much, much more. Don't miss this chance. all 345-2151.

If you are thinking of buying or selling a home, call us. We can help. If you have a home to sell and would like a free estimate with no obligations call 345-2151.

Call 345-2151

KASH, INC. REALTORS

LET KASH HELP YOUR FAMILY

consumers
A COOPERATIVE OPEN TO ALL SHOPPERS **CO-OP**

Visit Our In-Store Pharmacy
Beer & Wine on Sale on Sunday

FRESH CALIFORNIA

ASPARAGUS
lb. **79¢**

EXTRA LARGE INDIAN RIVER
White Grapefruit

5/\$1

BETTY CROCKER 'SUPER MOIST'

CAKE MIX

Asst. Flavors

58¢

18½ oz. pkg.

JAM LOVERS

GRAPE JELLY

3-LB.
JAR

95¢

SEALTEST

SOUR CREAM

PINT
CTN.

71¢

PILLSBURY

LIGHT BUTTERMILK
BISCUITS

CTN. OF 4 - 7½-OZ. CANS

58¢

SAVE 15c WITH THIS COUPON

DORITOS BRAND

TORTILLA CHIPS

REG., TACO &
NACHO CHEESE
7.5 to 8.5 oz. pkg.

68¢

CO-OP

Effect. Apr. 26-May 2, 1978
Limit One Per Family

SAVE 10c WITH THIS COUPON

CHEERIOS

15-OZ. PKG.

1.05

CO-OP

Effect. Apr. 26-May 2, 1978
Limit One Per Family

U.S.D.A. GRADE 'A'

WHOLE FRYERS

lb. **47¢**

CUT-UP lb. 53¢

Fryer Sale Ends Sat., April 29

FRESH WHOLE

Chicken Legs w/Thighs

lb. 58¢

Breast & Leg Qtrs

lb. 57¢

Chicken Thighs

lb. 77¢

Chicken Drumsticks

lb. 87¢

FRESH REGULAR

GROUND BEEF

lb. **96¢**

FROZEN SLICED
BEEF LIVER

lb. 66¢

BREYER'S ALL NATURAL

Ice Cream

ASST. FLAVORS
½-GAL. CTN.

1.78

COUNTRY TIME FROZEN

LEMONADE

REG. & PINK

12-OZ. CAN

38¢

Beer & Wine Special of the Week

MOGEN DAVID

PINK CATAWBA

25.4-OZ.
BTL.

1.98

WARM ONLY

You're Invited ...

Greenbelt - Penn Mar

Area Annual

Membership Meeting

MAY 2 - 7:45 P.M.

COMMUNITY CHURCH

CRESCENT RD. AT HILLSIDE

U.S.D.A. CHOICE BEEF

CHUCK STEAK

lb. **87¢**

1st CUT, BONE-IN

SLICED LEAN

PORK STEAKS

lb. **1.17**

MASH'S LOW SALT

COOKED HAM

SHANK HALF

1.15

lb.

BUTT HALF lb. 1.25

U.S.D.A. CHOICE BEEF

BONELESS CHUCK STEAK

lb. **1.35**

CENTER CUT

RIB STEAKS

lb. **1.76**

HYGRADE FRANKS

REGULAR & BEEF
1-LB. PKG.

1.07

SIGNAL

SLICED BACON

1-LB.
VAC. PK.

1.23

PRICES EFFECTIVE APRIL 26 - MAY 2, 1978

We reserve the right to limit sale items to 3 units per customer.

GREENBELT CO-OP

121 CENTERWAY

Open Daily 9-9, Sunday 10-6

Greenbelt Golden Agers Celebrate Anniversary

by Blanche Lee

April 19 was a special occasion for the Greenbelt Golden Age Club. It was their 23rd Anniversary and was celebrated with a catered luncheon at the Youth Center. Spring flowers decorated the tables, where places were set for 138 members and invited guests. Club President Bob Dove introduced the guests and officers of the Greenbelt Club. Guests present were: State Senator Edward T. Conroy and his legislative assistant, Elaine Smith; Delegate Leo Green, Mary Galbreath, Director of the Department of Aging; Chief of Police William Lane and Mrs. Lane; Mayor Richard Pilski and Mrs. Pilski; City Manager James Giese; Councilman Charles Schwan; Councilman Thomas White and Mrs. White; Mayor pro tem Gil Weidenfeld and Mrs. Weidenfeld; Leo Gerton, Hank Irving and staff from the Recreation Department.

After the luncheon speakers included Senator Conroy, who presented a resolution to President Bob Dove, in appreciation and congratulating the Greenbelt Golden Age Club on their outstanding accomplishments and activities over the years. The Greenbelt club is the oldest active club in the county. Other speakers were Mayor Pilski and Mary Galbreath. Mrs. Galbreath, who works directly with the Department of Aging and has contacts with city and club members, told her audience there had been a 30% increase in county funds and she was "listening" to Greenbelt wants on the various programs now in the mill.

Door prizes and donations were contributed by Greenbelt merchants, and music for dancing was furnished by Allen Del Homme & Company of Waldorf. Board Chairman Katie Basinger was in charge of the event.

Youth Job Training

The Prince Georges Red Cross invites junior and senior high youth to participate in its "Summer Career Program 78." This program offers teenagers job training placements in hospitals, nursing homes, day care and special education centers.

Not only do these youth volunteers earn valuable experience in the fields of health, education, medicine and recreation but they also receive evaluations which can be used as references for future paid jobs.

Last year almost 200 teenagers throughout the county participated. Youth who are 13 and older and who can work at least once a week are urged to call the Red Cross Office of Youth Services at 559-8500, between 9 and 4:30 p.m. on weekdays.

Doctor of Family Practice

Dr. Till Bergemann of the Greenbelt Medical Center has been named a diplomate of the American Board of Family Practice (ABFP), and he is now certified in that specialty. Family practitioners are certified in the areas of internal medicine, surgery, obstetrics, gynecology, pediatrics, psychiatry and community medicine.

To qualify for the examination a physician must have completed either a 3-year family practice residency or have been in family practice a minimum of six years and successfully completed 300 hours of continuing medical education approved by the ABFP.

GTA Tennis Tournament

More than 100 persons took part in the Greenbelt Tennis Association Spring Tournament, played the past two weekends at Braden Field and Roosevelt High School. Barbara deLevie led all participants by winning championship trophies in three events.

Results of the finals in the eight events contested were as follows: Men's "A" singles, Richard Jones defeated Tom Savage 6-7, 6-0, 6-1; Men's "B" singles, Dave Dierker defeated John Brantner 6-3, 7-6; Women's "A" singles, Barbara deLevie defeated Mary Beth Hatem 6-0, 6-2; Women's "B" singles, Jackie Feldman defeated Gail Sarni 6-4, 7-5; Men's "A" Doubles, Jim Hare - Dan Peterson defeated Howard Savage - Tom Savage 7-6, 6-4; Men's "B" Doubles, Ken Hayes - Frank Moraff defeated Phil Nicholson - Shanon Harbaugh 7-5, 6-2; Women's Doubles, Jan McLaughlin - Barbara deLevie defeated Mary Beth Hatem - Joan Hult 5-7, 6-4, 7-5; Mixed Doubles, Bob Carroll - Barbara deLevie defeated Mike Swaney - Mary Beth Hatem 6-0, 6-1.

E. Roosevelt Girls' Team Wins Basketball Award

Eleanor Roosevelt Sr. High School Girls' Basketball Team was among those receiving awards at the "Winter Sports Awards Presentation Ceremony" held April 12 at the school. Of the 11-member team, 5 are Greenbelt girls - Karen Clute, Valerie Richards, Lynn Labukas, Karen Nagle and Barbara Hand, Mgr.

The girls presented coaches Linda Jones and Candy Rester with a dozen carnations each. A social hour was held afterwards for parents and students.

Driver Ed. Courses

The Prince Georges County Public Schools will hold registration for its summer driver education program from May 1 through May 12. Registration forms are available in all county junior and senior high schools on or after May 1. Registration is by mail and all applications must be postmarked by May 12.

To be eligible, enrollees must be between the ages of 15 and 18 on the first day of class. Classes will run from June 26 through July 21 and, if needed, a second session will run from July 20 through August 11.

Eleanor Roosevelt and Parkdale are among the schools offering the summer program. For further information call 952-4533.

Community Interviews

The University of Maryland at Baltimore is currently seeking experienced interviewers for a short-term (six months) federally funded statewide project. Interviewers are needed in all Maryland state counties. Only applicants meeting the following qualifications need apply:

High school graduate or equivalent; possession of a valid Maryland drivers license and a car; prior experience in home interviewing. The position guarantees a minimum of 30 hours per week and requires evening and weekend hours.

Qualified applicants should submit resumes only to Mr. Gary Williams: UNIVERSITY OF MARYLAND AT BALTIMORE Office of Personnel 685 West Baltimore Street Baltimore, Maryland 21201 EQUAL OPPORTUNITY EMPLOYER



For Insurance Call: Don W. Taulelle 9200 Edmonston Rd. Greenbelt, Md. 20770 474-5007

Like a good neighbor, State Farm is there. State Farm Insurance Companies Home Offices: Bloomington, Ill.

PORTER'S LIQUORS

3200 Balto. Blvd. 474-5275 (next to McDonald's in College Park)

We have the largest selection of Wines from around the world. Special prices on case purchases

Order Early

Any questions about wines welcomed

Notice — Notice — Notice

New DEADLINE for DISPLAY ADS is Monday 10 p.m.

The Greenbelt News Review

Vote for

JIM SIMON

1B Laurel Hill Rd.

FOR

AUDIT COMMITTEE

Pledged for:

Economical Rehabilitation
Maintaining Values

Annual Meeting, May 10-11



By authority of Candidate

In Greenbelt -

The Partridgeberry School, Inc.

— A Unique Educational Environment —
Offers Children Freedom to Learn

— motivated by their own interests, curiosity, & enthusiasm
— through developmental activities
— in an open concept program with individualized instruction and an enrichment academic curriculum

Partridgeberry, a fully accredited parent-cooperative elementary school (K-6) is now in its eighth year of innovative, humanistic education.

Now Enrolling for Next School Year

For information, call or write to the Director

The Partridgeberry School, Inc.
20-G Hillside Road
Greenbelt, MD 20770
(301) 474-0994

*Unalterably opposed by moral principle, policy, and practice, at all levels, to discrimination by race, color, sex, national origin, or economic class.

FORT WASHINGTON FOREST

WE HAVE THE KEY

to your new home. It's so pretty! A comfortable home complete with 4 BR, 2 baths, and an economical exterior of brick and aluminum siding. Exceptional rambler even has w/w carpet and a paneled rec room. A good buy at only \$58,500. Located on full 1/2 acre backing up to park.

GREENBELT

ONE GLANCE CONVINCED US

that this one BR unit will be nice for you to come home to! Eat in kitchen, w/w carpet in living room. Two window air conditioners. It's hard to imagine all this for only \$14,950. Wonderful for young marrieds to start saving a bundle toward their home in the future instead of paying rent.

Call 474-5700

NYMAN REALTY, INC.

151 Centerway

474-5700



AUCTION

Saturday, May 6, 1978

Commencing at 10:30 a.m.

To enforce our liens for storage and/or other charges, we will sell by public action the complete contents of numerous household shipments. Consisting of furniture, antiques, glassware, pots and pans, etc.

Bryan Moving & Storage

5005 Cook St., Beltsville

RON BORGWARDT

10212 Baltimore Blvd. College Park, Md. 20740 (on U.S. 1 at the Beltway) 474-8400

"See me for car, home, life, health and business insurance"



State Farm Insurance Companies Home Offices: Bloomington, Illinois

Will's Hardware

- Home Center

Shade Your Home - Conserve Energy

- Levolor Mini Blinds
- Woven Woods by Kirsch & Columbia
- Custom Shades
- In Stock Shades - Cut to Order

Shop at home. Call for Appointment 937-3733 10502 Baltimore Blvd. (Rt. 1)

Open Sundays 10-4.

Warm up to

Wallcoverings at Will's

Select From Our Designer Line by

- SCHUMACHER
- KATENBACH & WARREN
- BOB MITCHELL
- WALLTEX
- STAUFFER
- VICOA
- SUNWORTHY
- GREEF
- STRAHAN
- FASHION
- SANITAS
- BIRGE
- CAREFREE
- IMPERIAL

Wallcoverings on Sale Up to 30% off

Free Decorating Advice Beltsville, 937-3733

(Directions from Greenbelt. Take the Beltway to exit 27N (one exit north of Greenbelt) and Will's is one mile on your left, in the Chestnut Hill Center).

CLASSIFIED ADS

Ads must be prepaid and submitted in writing to:

- The News Review office in the basement of 15 Parkway between 8 and 10 p.m. on the Tuesday preceding publication.
- The Twin Pines office (News Review drop box). Deadline is 4:30 p.m. Tuesday (Put payment in envelope with ad. Do not pay Twin Pines).
- P.O. Box 68, Greenbelt, Md. 20770. Must be received by Tuesday.

RATES: \$1.50 minimum for the first ten words. 10c each additional word. No charge for listing items that are found.

BOXED ADS - \$3.00 minimum for a 1 1/2 inch one column box. \$1.00 each additional half inch. Maximum ad for this section is three inches.

CALDWELL'S WASHER SERVICE. All makes expertly repaired. Authorized Whirlpool dealer. GR 4-5515.

PIANO TUNING AND REPAIR - Expert and Reliable Piano Service to Greenbelt since 1960. Benjamin Berkofsky 474-6894.

TYPEWRITER REPAIR, ELECTRIC, STANDARD AND PORTABLES. Call 474-6018.

TROMBONE TRUMPET and VOICE LESSONS. Professional musician with degree. 474-5945.

(MARIE'S POODLE GROOMING) make your appointments today. Call 474-3219.

HOUSE DOCTOR

Expert craftsman will replace broken window glass, misc. electrical jobs, wall patching, ceramic tile, etc. Assemble sheds and yard duties. Call evenings.

474-5530

TYPEWRITER REPAIR - Electric, standard, and portable. Call 474-0594.

PIANO LESSONS: Peabody Conservatory Graduate. Beginners-Advanced. 474-9222.

PAINTING - Interior, exterior, 20 years exp. Do my own work. Call Bob Neal 776-5461.

PIANO TUNING AND REPAIR - G. Daniel, 262-2448.

LIGHT HAULING, w/ pick-up Truck. Call Mike after 4:30, 474-9401.

VACUUM CLEANER REPAIR All brands and types. Call evenings, 474-5530.

TYPEWRITER OR ADDING MACHINE \$30 & UP. HOWARD'S TYPEWRITER CO., 5111 BALTIMORE AVE., HYATTSVILLE, MD. 277-9333.

ANTENNA PROBLEMS

Sales & Service
Expert antenna man will install new/repair antenna for

Attic or Outdoors
Evenings

474-5530

PAINTING - Interior, exterior wallpapering and light carpentry also. Good Greenbelt references, excellent workmanship. Frank Gomez, 474-3814.

APPLIANCE REPAIR - Washers, dryers, dishwashers, garbage disposals, trash compactors, etc. **WEAVER APPLIANCE REPAIR SERVICE.** 552-1119.

HANSEN PLUMBING & HEATING - 14C Hillside Rd., Greenbelt, 345-5837. Bonded, licensed, small home jobs.

FOUND - Greenbelt's Animal Warden finds stray animals every week. If your pet is lost, check with the police dept. 474-5454.

LAMPS REPAIRED - Floor and table types. Evenings, 474-5530.

ARTEX - ELVIS IS HERE. Call your Greenbelt instructor evenings and weekends. Jackie, 345-1086.

HOUSE FOR SALE

by owner

Berwyn Heights - 4 bedroom rambler, 2 full baths, large modern kitchen with spacious dining area. Enclosed porch, finished rec. room & second kitchen. C/A/C Mid 50's.

Open Saturday - Sunday, 1-6 From Greenbelt Road, 1 block on 58th Ave. to Seminole Street. Right one block to 5613.

474-4982.

\$100 up **WEEKLY MAILING CIRCULARS!** Materials supplied, immediate income guaranteed! Send self-addressed stamped envelope: Homeworkeer, B427-3AP, Troy, MT 59935.

FOR RENT

4 Bedroom, 2 bath rambler in Lakewood. Family room, living room, dining room, eat-in kitchen. C/A/C w/w carpet, draperies, washer/dryer. Energy efficient. \$425/month. No groups.

474-5349 after 5 p.m.

FOR SALE - Several chests of drawers and sundries. Moving. 474-7766.

TORO 19" Electric lawn mower. Good condition. \$35. Call 474-8204.

FOR SALE: Ethan Allen Maple Desk, Excellent Condition. \$50.00. Maple Arm Chair \$15.00, Maple Dresser \$25.00. Phone: 345-8975.

FOR SALE - Sears bunk beds, \$185 or best offer. 474-8533 after 3 p.m.

2 CREAM PUFFS! 1974 Malibu 4D (\$2,895) & 1972 New Yorker Brougham (\$1895) 441-2528.

STUDIO CLOSING - Art supplies, easels, frames, etc. Reasonable. 474-9330, 474-2054 eves. & weekend.

House For Sale

by Owner

3 bedroom masonry
26 E Ridge Road
Greenbelt
Call 474-1087 after
5:30 p.m.

YARD SALES

SALE - Antique furniture, Sat. April 29, 10-12. 57K Ridge Rd.

BIG YARD SALE - Various items, H.O. trains. Saturday, 10 a.m. - 3 p.m. 15 Woodland Way.

MOVING SALE - No junk here. Duplicate small appliances, outgrown children's things, more. Sat., Apr. 29, 10-6. 58H Ridge.

YARD SALE - Sat, April 29 10-4. Used furniture, books, odds & ends. 10 court Laurel Hill Rd.

YARD SALE - Sat., Apr. 29, 10-3. Good stuff, not junk. 3M Research.

Mostly children's BOOK SALE. Some old bikes. This Saturday 10-2. Gardenside of 45-H Ridge. Also, Barbie doll collection, seldom used.

Need Home

Improvements?

Call John

Specializing in Ceramic Tile and Kitchen Floors, Sidewalks, Patios, Driveways, etc. Call anytime.

345-7497

FOR SALE - 2 1975 Chevy Belair Station Wagons. 9 passenger. P/S, P/B, tinted glass, V-8 engine, 50,000 miles Md inspected. Call 559-8500 ext. 42 9-4:30.

PLAN YOUR OCEAN CITY VACATION NOW in our lovely 2BR, 2 bath oceanside condo. 262-4003.

LAWN MOWERS and small engines repaired. Reasonable. Call 474-8261.

MOTHER WILL CARE for your child. Breakfast and lunch included. Call 474-5198.

PROFESSIONAL - LOOKING YARD WORK and other odd jobs done by reliable 15 year old \$3/hr. Call Mark, 345-7457.

HOUSE FOR SALE

Berwyn Heights

4 BR Rambler - 2 baths, C/A/C, w/w carpet. Large treed lot. Newly Redecorated. VA appraisal at \$51,500.

8415 57th Ave. 345-7548

CAMP CENTER

Camp Center/upper camp (ages 8-14) is now accepting applications for a summer day camp program from June 19-Aug. 25. Hours 7 a.m. - 6 p.m. The location is on a 22 acre farm on Enterprise Rd. near Prince George's Community College. Activities: Swimming and Horseback Riding Instructions, Archery, Arts and Crafts, Field Sports and Special Events. Transportation available. Call 336-7740 for brochure.

GHI UNIT

One bedroom, second floor end new kitchen & bath, attic w/w carpeting, woods, garden \$15,750. / 10% down. 345-7189

FOR SALE - Serta mattress and box spring. Full size, used, good condition \$25.00. 343-1259.

TWO MALE KITTENS - FREE to good homes. 8 weeks. One buff, one grey w/ white boots. 474-6282.

FREE KITTENS - Born April 25 345-8049, 6-10 p.m.

Cemetery Lots - Fort Lincoln, 2 lots in the Garden of the Apostles. 345-8703.

GUITAR LESSONS - Folk, rock, jazz, pop. Beginners & up. 345-8576.

HONDA CB 1000 miles Top condition, 2 helmets with bar luggage rack. \$775. Call after 5 p.m. 925-8322.

HOUSE FOR SALE - 55-E Ridge - 3 bedroom end frame. Washer, dryer, dishwasher, 2 air conditioners. Large fenced yard. 345-7252.

BOWIE HOME

Wooded corner lot for beauty and privacy. 3 bedrooms, 2 full baths, enclosed garage. Mid 50's. Suburban Realty

474-4938

LOVABLE, GENTLE 3 year old cat needs home. Has had all shots, spayed, declawed. 345-9421.

FOR SALE - Early American style table and chairs, blue bench seat for van, wedding dress size 7-8, never used. Call 345-5128.

Biorhythms - your personal chart for next 12 months. Send birthdate and \$4.00 to Kaynel, P.O. Box 76, College Park, Md. 20740.

VIOLIN-SHAPED GERMAN BASS and bow \$1,200. 474-6964.

KNITTING AND CROCHETING done in my home. Baby clothes, children's clothes, summer clothes, wedding accessories, etc. Call Mrs. Comulada at 345-9162. 9-9.

FIRST TIME BUYERS

can save up to \$100.00 on monthly mortgage payments using new FHA graduated payment plan. Renting now? Learn about tax advantages that all homeowners enjoy.

Call Robbie Milberg
Century 21 Award
249-5592 or 262-5600

For a confidential
qualifying interview now

GHI Board Meetings

Because of the GHI elections, the GHI Board of Directors will be meeting on two Thursdays in a row. Regular board meetings will take place on April 27 and the following week, on May 4. GHI members are welcome to attend these meetings.

The Board will also be holding a Saturday session on April 29, from 10 a.m. to 12 noon, to discuss rehabilitation proposals with members of GHI committees. Approximately 40 committee members have attended these sessions in the past.

SELLING OUT!

Brass chandelier, bookcase, lamps, tables, portable stereo with speakers, cameras, cedar chest, 8 antique oak dining chairs with velvet cushions, antique churn, much more. 441-2528.

F. Johnson of In-Home TV Service

visits Greenbelt 4 days each week.

- ✓ Always estimates within 10%
- ✓ Always calls before visiting
- ✓ Works some nights & weekends
- ✓ Top rated with consumer groups
- ✓ Prompt, fair - 18 yrs. experience - He listens!
- ✓ Most repairs done in your home

Master Charge, VISA accepted. CALL 588-1166 IN DAYTIMES 565-0001 Evenings & Weekends

Youth of Greenbelt

Full or Part-Time Work. If you can't average Min. \$14. hr. plus \$1950 scholarships, you are just plain lazy! American Youth Enterprises offers Exceptional Dealerships. Be your own boss. Work when YOU feel like it. Take your work wherever you go - On Vacation or College. Apply by appointment. Parents please accompany minors. This offer open to all ages. 474-6028.

Ad Distributors

With Own Transportation
Wanted

GOOD WORK
GOOD PAY

(Poor work, no pay)

ANY AGE, ANY HOURS

Call Mr. Johnson
261-5577

CAMP CENTER

Camp Center/lower camp (ages 2-7) is now accepting applications for a summer day camp program from June 26-Aug. 25. Hours 7 a.m.-6 p.m. Locations in Greenbelt and on the Campus of Prince Georges Community College. Activities: Swimming, Pony Rides, Arts and Crafts, Outdoor Games, Field Trips and Special Events. Transportation available. Call 336-7740 for brochure.

Recreation Review

Play Ball!!!

Attention all softball spectators! Slow-pitch action begins on Mon., May 1, 6:15 p.m. The women will play one game on Braden Field #2 and two games at the North End School Field. The men will play on Mon., Tues. and Thur., the women on Weds. Little League will be on the field Fri. evenings, under the lights, with the Men's 'B' League competition on Sats.

Camp Pine Tree

The summer camp is operated by the Greenbelt Rec. Dept. This marks the 13th year of fun and skill programs of outdoor and special activities. Instructional programs in swimming, tennis, tumbling, trampoline, crafts and archery are offered. The camp session is eight weeks long, divided into 4-two week sessions beginning June 26. Brochures and applications are available at the Rec. Dept. For further details call 474-6878. Mon., - Fri., 9 a.m. - 5 p.m.

Tennis News

The season's first tournament, co-sponsored by the Rec. Dept. and the Greenbelt Tennis Association, will take place May 19 thru May 29 with Men's Singles and Doubles - 'A' and 'B' Divisions - plus Women's 'A' and 'B' Singles and Doubles and Mixed Doubles. Register at the Youth Center Business Office May 8 thru 16, 10 a.m. - 2 p.m. For further information on the tournament, call the Rec. Dept. Mon. - Fri., 9-5 p.m. 474-6878.

For convenience, a central location is established for tennis court reservations at the Braden Field Tennis Courts. A sign-in board, with reservation sheets for each of the eight courts is located at the center outside area of the complex. All players must sign-in as outlined by the posted rules. Check permits for tournaments and city lessons to avoid unnecessary delay.

Little League Opening

Springhill Lake will greet Little League Baseball Opening Day Saturday, April 29, with a parade at 1 p.m. Beginning at the Community House, the parade will proceed down Springhill Drive to Cherrywood Terrace and turn left onto Breezewood Court, then right onto Springhill Lane and finally across Breezewood Drive to the junior high school baseball field for opening day ceremonies. Featured performers will be the Shriners from Almas Temple, Majorettes from Berwyn Heights, Adelphi Marching Bands, National Capitol Park Police Horse Patrol, clowns and sports cars. State Senator Ed Conroy is expected to be among the VIP's. The baseball teams, their coaches, officials and managers will also be present. Raindate is May 6.

At 2 p.m. the Equitable Trust Orioles vs. Community Realty-Mets at GJHS field. To help call Art Houchens 474-2898.

Family wants to locate Mr. and Mrs. Robert Erickson, formerly of Mt. Rainier. Write Mrs. Erickson's brother, Earl Kline, 2102 Carter Ave., St. Paul, Mn. 55108

University Boutique International, Inc.

Beautiful, natural clothing and exquisite gold and silver jewelry for women & men

COLLEGE PARK

7429 Baltimore Avenue
277-5521

College Park Electric Service

Efficient, economical
Service by Master Electrician
Small Jobs Welcome

Mr. Brown

937-3683 474-8188

Emotions Run High at Public Hearing

(CONTINUED FROM PAGE 1)

ments for invading Poland. Addressing her remarks to the students, Sharon Smith expressed resentment of the "blackmail" that if the overpass is not built at Gardenway they will walk across the Parkway anyhow. This was in reference to a student survey at Roosevelt in which 39% of those polled said that they would continue to walk across the Parkway even if an overpass was built at Mandan Road. Some Greenbriar residents expressed the view that having to build an overpass was sanctioning lawlessness because walking across the Parkway is a State and Federal offense. Marilyn Chaples of Greenbriar - Phase I shared the view of others that these people have chosen to accept the consequences of their acts - namely "the loss of life." Dale Whipple of Greenbriar - Phase I objected to what he called "intimidation to-night." When choosing between the two sites, Whipple, Chaples, and several others preferred Mandan Road. Joseph Margolis, represent-

ing the Board of Directors of Greenbriar - Phase I, stated that if Mandan Road is too expensive or impractical, then "to heck with it."

Other Views

Katherine Keene, Roosevelt teacher and resident of Hillside Road, expressed horror and wondered "why some of you apparently believe in human sacrifice—I don't." Greenbelt students Alan Amberg, Carl Choper, David Craig, Ilana Stern, and Margaret Williamson also spoke in favor of the Gardenway site. The Lakeside Citizens Association and Boxwood Civic Association have also expressed support for the Gardenway route. Lakeside resident Howard Savage noted that buses, which do not always come as assigned, would not solve the walking situation because the times of before- and after-school activities for Roosevelt students are so varied. Favoring the Gardenway site because of necessity, cost and safety, Steven Lloyd from the ERSHS student

government wondered whether Mandan Road might be extended in the future anyhow.

Clearing up some confusion, Mayor Pro Tem Gil Weidenfeld pointed out that people are now crossing north of the Gardenway site where the land is level and easiest to walk across. Because Greenbriar students attend Center School, Dick French, Center School PTA representative and Greenbriar resident, called the need for students' safety "a two way street." In a written statement to Council, Greenbriar resident Thomas Jenkins felt the safety of children was the primary issue and "making Greenbriar become closer united with the City of Greenbelt" a secondary issue.

Jenkins also pointed out that Council does not know how 34% of Greenbriar Phase I feels about the overpass. At an annual meeting in March 66% of Greenbriar - Phase I voted 47.7% against the Gardenway location. Another Greenbriar - Phase I resident, Thomas Pace, questioned whether that vote was taken on a fair basis, since four speakers at the meeting gave rousing speeches of "pure poppycock" against the overpass and only one individual spoke for it. Favoring the Gardenway site, since students have said they wouldn't use Mandan Road, he reminded the audience that "kids do foolish things." Jaylee Mead of 7724 Hanover Parkway pointed out that the Phase I Board of Directors voted in favor of the Gardenway site in January.

Roosevelt teacher and Greenbelt resident, Jack Steiffer, spoke to Greenbriar's fears of vandalism. He felt a bridge would funnel these vandals to the woods and Center Mall and thus away from Greenbriar and the school. Agreeing with this, Todd Chernikoff, Roosevelt PTSA vice-president, concluded that Gardenway was the only way both economically and from the student viewpoint. Many residents, especially Greenbelters living near the lake, sympathized with Greenbriar's fears. One of these was Lakeside resident Nancy Neupert, who felt "a life is at stake" and it was unrealistic to say parents should be controlling their children. Although a victim of vandalism herself, Katherine Keene summed up the feeling with, "You shouldn't put property damage above human life."

Greenbelt Rd. Route

Questions about the location of the proposed overpass continued to crop up. Lou Cassidy and Dale Whipple of Greenbriar wondered why a walkway couldn't be put along Greenbelt Road (route 193) since this would be the cheapest solution. Other people complained about the crumbling, unsafe curb along route 193. Councilman Thomas White explained that the city has asked the State Highway Administration (SHA) for a safer crossing. However, SHA has refused because a long-range plan for the crossing is under review and they don't want to mix pedestrian and automobile traffic. SHA also wants to discourage walking in the area because it is so unsafe.

Some Greenbriar residents questioned the need for the public hearing, saying they were initially "given the impression that their wishes with respect to the overpass location would be respected." Many felt the "comparative analysis of Pedestrian Overpass Locations" prepared by the City of Greenbelt was biased. Reynold Schnyder, Greenbriar resident, asked that the bridge be put "where it would have the least impact, where it would produce the least amount of ill-will and dissatisfaction." Expressing support for the Gardenway site, Thomas Jenkins felt Council has to decide, "How much of a personal sacrifice should a person have to pay to insure the safety of a child?"

FLOORING

Tile - Linoleum
Carpet & Ceramic
Installation

Free Estimates
Phone 345-4277

Greenbelt Pizza - Sub Shop

THURSDAY, FRIDAY, SATURDAY, & SUNDAY

Package Deal - Large Pepperoni Pizza and carton
of Coca-Cola \$4.10

MONDAY & TUESDAY - Royal Steak Sub \$1.10

WEDNESDAY - Large Sausage Pizza \$2.85

107 CENTERWAY

474-4998

RE-ELECT

ARTHUR E. GROPP

6-H Crescent Rd.

to the

AUDIT COMMITTEE

Member: GHI Aesthetics
and Environment Committee

Participant: Rehabilitation

Program Planning

Will continue to work for sound Administration and Fiscal
Planning, and for home improvements.

Annual Meeting,

May 10-11, 1978

By authority of the candidate



PRIZES!

PRIZES!

PRIZES!

Drawing

April 29 - 3 p.m.

Eagle Sports Inc.

Discount Sporting Goods

9219 Baltimore Blvd., College Park, Md.

474-3095

1st Prize	- \$50.00	(in merchandise of your choice)
2nd Prize	- \$25.00	(in merchandise of your choice)
3rd Prize	- \$10.00	(in merchandise of your choice)
4th Prize	- \$ 5.00	(in merchandise of your choice)

Your name goes into the pot with every purchase of \$2.00
or more!

You do not have to be present to win, HOWEVER, if you
are, the value of the prize is DOUBLED!

REAL ESTATE OFFICE

GREENBELT HOMES, INC.

OPEN 7 DAYS A WEEK

HOUSES FOR SALE:

Extra-nice 3 BR frame; neat and compact kitchen; new bathroom; washer, dryer, A/C, carpeting, dishwasher. Fenced yards, good location - \$19,000.00.

Added room would make ideal den or family room in this newly redecorated 2 B.R. frame; large kitchen; ra/refr/washer. Immediate possession. \$22,000.

Landscaped, fenced yard - The ideal starter home for the single or young married couple. Newly painted second floor 1 BR apt. Good location and parking - \$11,950.

Make a good start now -
Enjoy summer living in a country atmosphere! Parks,
playgrounds, lake, and other recreation facilities.

Your monthly payment covers TAXES, HEAT, water/
sewer, structural maintenance, insurance, and trash collection.

GREENBELT HOMES, INC.

Hamilton Place

Greenbelt, Maryland

474-4161

474-4244

474-4331

Questions and Answers on Overpass

by Elaine Skolnik

About 14 Greenbriar residents, representing the sentiments of almost all Greenbriar residents in the audience Monday night, expressed their frustrations and fears concerning the problems they believe they would face if the Gardenway route for the overpass is chosen. This route would require an easement from Greenbriar residents for the pathway running through the median strip of the parking lot between 7716 and 7718 Hanover Parkway.

In an effort to present some key issues as seen by those who are opposed to the Gardenway route, the News Review offers the following question and answer format.

Question: Why use private land (Gardenway Route) instead of public land at Mandan Road, especially since the Mandan route is the central location for most Greenbriar residents?

Answer: Federal funds have been authorized to provide a safe passage-way for students now shortcutting across the Parkway to get to and from E. Roosevelt. The rationale for the Gardenway route is that there would be no reason for students to shortcut, since it would be shorter to use the overpass at that point than to dart across the Parkway. Students might be expected to continue to cross the Parkway if the Mandan Road overpass were constructed.

The Mandan Road overpass is at the center of the Greenbriar/Glen Oaks development and will be used by a portion of Windsor Green residents. (Others will be closer to the Gardenway site.). In terms of distance, the Mandan Road overpass would be a third of a block shorter for the majority of Greenbriar/Glen Oaks residents walking to the center. For Greenbriar residents going to McDonald Field, the library and other facilities south of the center, the Gardenway overpass would be shorter. Those walking to most Greenbelt churches or to the ballfields on the landfill would find the Mandan Road overpass shorter. In terms of distance for Roosevelt students, the Gardenway overpass would be the shorter route from any area of town.

Question: Why hasn't the city pressed for a pedestrian walkway on the present bridge on Greenbelt Road?

Answer: Prior to the construction of E. Roosevelt, the city, Board of Education and Greenbriar developer approached the State, advocating that the bikeway under construction at that time along Greenbelt Road be extended over the bridge to NASA. The State took the position that with all the turning movements from the various ramps, such an extension would be unsafe.

Question: Why place the overpass at Gardenway when the students are now shortcutting across the parkway between Mandan Road and Gardenway?

Answer: The present crossing takes place where the terrain makes it easier to cross, where the land on either side is at the same level as the roadway. At both the proposed Mandan Rd. and Gardenway sites, the land slopes sharply to the level of the Parkway. The present crossing is actually a longer distance from Greenbelt Center to E. Roosevelt than the overpass crossing at Gardenway would be, but is shorter than the crossing at Mandan Rd. via an overpass.

Question: Why subject those Greenbriar residents living near the path to the Gardenway overpass to potential vandalism and litter when the Mandan Road path is located further away from the apartments?

Answer: It is thought that if the Mandan overpass were constructed, students would not stay on the path because of the longer walk to Roosevelt. Instead, they might take a number of shortcuts through parking lots and across lawns of Phase II apartments. The thinking is that students would stick to the Gardenway route path because it is shorter. The Gardenway route would be easier to monitor.

Question: Wouldn't a fence on the median strip in the parking lot separate one part of Greenbriar from another?

Answer: The thinking is to run a fence, with or without openings, only if desired by Greenbriar residents, on either side of the median to separate the pedestrians from the automobiles.

Question: Why don't students take the buses to and from school?

Answer: Students living close enough to walk are tempted to use the crossing at Rte 193 or cross the Parkway at grade if they miss their bus or when the bus is late or does not come at all. There is no bus for those who engage in programs before school and there is insufficient transportation for those who participate in after-school activities.