

# Greenbelt News Review

AN INDEPENDENT NEWSPAPER

Volume 40, Number 14

GREENBELT, MARYLAND

Thursday, February 24, 1977

## GHI Board Will Appeal HRC Housing Ruling

by Al Skolnik

At a special meeting on Thursday, February 17, the Greenbelt Homes, Inc. board of directors voted to appeal the county Human Relations Commission ruling in the marital status case to the Circuit Court of Maryland. Opposing votes were cast by directors Ted Byerly and Mary Clarke; director Steve Polaschik was absent.

GHI has 30 days in which to appeal the ruling which requires GHI to grant membership to unmarried couples living together for the purpose of purchasing a home (perpetual use lease).

### Key Questions

GHI counsel Albert Ginsberg told the board that he thought the key questions to be resolved in a court of law are the definitions of "marital status" and "immediate family."

The Human Relations law prohibits discrimination in housing on the basis of race, creed, color, sex, national origin, age, occupation, marital status, public opinion, or personal appearance. The law however, contains no definition of marital status. Many of the county council members who voted for the original act say that the marital status clause was designed to protect single, widowed, separated, and divorced women from housing discrimination and was not intended to force any landlord or housing corporation to admit two or more persons unrelated by blood or marriage.

GHI's position is that it does not discriminate between single and married persons but it does restrict occupancy to members of an immediate family. Though no definition of immediate family is contained in the contract or bylaws, GHI officials claim a "commonly accepted" interpretation of "family" as being "related by blood or marriage."

The Human Relations Commission has taken the position that an unmarried couple living together constitute a family unit and consequently cannot be barred from housing.

### Other Questions

GHI also sees the ruling as raising the question as to whether there is such an overriding social need to provide housing for unmarried couples living together as to make the Human Relations law applicable. Another unanswered question is whether GHI members have a property right in their mutual ownership contract to limit occupancy of their units to immediate family.

Another aspect that caused the board concern was the ruling's requirement that during the next two years GHI submit for review to the HRC staff all applications denied for membership to persons of the opposite sex who are unmarried. The concern arose that disclosure

of information in connection with an application might violate rules of confidentiality, especially with respect to financial status.

### Public Hearing

In the meantime citizen comment will be solicited March 8 at 7:30 p.m. on a county bill allowing landlords and housing corporations to refuse housing to individuals not related by blood, marriage or adoption. CB-3 is sponsored by Council members Francis White, Bogley, Amonett, Wilson, Hartlove, Casula and Darlene White.

The bill amends the 1972 Human Relations Law that provides protection against discrimination in housing, public accommodations, education and employment on the basis of sex, race, nationality or creed. The proposal changes the definition of "marital status" to mean persons married, single, widowed, separated or divorced. But it would no longer prohibit a landlord or housing corporation from refusing housing to individuals not married or otherwise related to one another.

### HEARING FEB. 28

## GHI and City Ask For CDBG Grants

County staff has recommended a \$150,000 grant to Greenbelt Homes, Inc. under the Community Development Block Grant (CDBG) program for fiscal year 1977-78. The grant program is administered by Prince Georges county, which uses such Federal funds for a number of activities related to capital improvements, especially in older neighborhoods.

The grant to GHI would be used to fund consultants to prepare a long range rehabilitation plan and to offset certain costs of financing the last stages of the heating renovation program.

The city of Greenbelt has also been recommended for a \$130,000 grant which will be used in upgrading recreation areas (\$30,000) and streets (\$100,000).

These grant moneys have to be approved by the county council. A hearing will be held by the county council on Monday, Feb. 28, 1977 at 7:30 p.m. at the offices of the Maryland-National Capital Parks and Planning Commission at 6600 Kenilworth Ave. GHI is urging its members attend the hearing.

GHI has already received bids from eight consultant firms to prepare a long-range plan for rehabilitating GHI. The bids all approximate \$40,000 for the intended work. To help defray this cost, GHI is hopeful of obtaining a \$20,000 grant from the National Endowment for the Arts. The remaining \$20,000 could come from the CDBG program.

### PURIM CARNIVAL

A Purim Carnival for the entire family will be sponsored by the Mishkan Torah Synagogue on Sun., Feb. 27 from 1 to 2:30 p.m. Featured will be a costume parade with a prize for each participant, games for everyone, fortune teller, refreshments, etc. Free entry - charge for games, etc.

## AGENDA

### REGULAR MEETING OF CITY COUNCIL

Mon., February 28, 1977

8:00 P.M.

#### I. ORGANIZATION

1. Call to Order
2. Roll Call
3. Meditation  
Pledge of Allegiance to the Flag
4. Minutes of Regular Meeting of February 7, 1977
5. Additions to Agenda by Councilmen and Manager

#### II. COMMUNICATIONS

6. Petitions and Requests
7. Administrative Reports
8. Committee Reports

#### III. OLD BUSINESS

9. Charter Amendment Resolution to Amend the Charter of the City of Greenbelt, Said Charter Being Subtitle 40 of Article 17 of the Code of Public Local Laws of Maryland (1973 Edition as Amended) and Containing in Whole or in Part the Charter of the City of Greenbelt, by Amending Section 3, Title "General Powers" to Add a New Paragraph 21 to Provide the City the Authority to Create a Non-Profit Corporation to Hold Title to and Administer a Housing for the Elderly Project - Second Reading

#### IV. NEW BUSINESS

10. Charter Amendment Resolution to Amend the Charter of the City of Greenbelt, Said Charter Being Subtitle 40 of Article 17 of the Code of Public Local Laws of Maryland (1963 Edition as Amended) and Containing in Whole or in Part the Charter of the City of Greenbelt, by Re-numbering Section 72, Title "Separability" to Section 73, and by Adding a New Section 72, Title "Legal Defense of City Officials and Employees" to Provide Authority for the Appropriation of Funds to Defray Expenses and to Insure Proper Legal Defense for City Officials and Employees for Possible Legal Actions that Might Result from the Lawful Performance of Their Official Duties - First Reading
11. An Ordinance to Repeal Section 7-2, "Voter Registration Records; Where Voters to Cast Ballots"; to Repeal and Reenact with Amendments Section 7-3, "Polling Places" to Include the Provisions of Section 7-2; and to Enact a new Section 7-2, Title "Voter Registration" to provide for the manner in which registrations for elections may be effected - First Reading
12. Zoning map Amendment A-9214, Stidham Property Advisory Planning Board Report # 182

## METRO Station Plans For Springhill Lake Unveiled

by Al Skolnik

Greenbelt citizens got a run-down on the problems and proposals for a METRO subway terminal station at the Springhill Lake industrial tract at an informational meeting on Wednesday, Feb. 16, at the city offices. METRO officials were on hand to make the presentations and answer questions.

Although the meeting was intended to review various design concepts for the terminal station on the Modified Adopted Regional System (ARS) line, it soon became obvious that there were many uncertainties in the picture, the first one being whether there will be a subway route running to Greenbelt at all.

### Need Access to Beltway

The State Highway Administration is opposing a Greenbelt "E" line that parallels the B & O railroad tracks and ends up at SHL. It favors an alignment that goes west of the University of Maryland and terminates near the Beltway and I-95 intersection.

Consequently, the SHA has indicated that it would not approve any direct access from the Capital Beltway to a METRO station except one located at I-95. There was general agreement that without access from the Beltway, the case for a subway station at the SHL industrial tract is weak.

The various design concepts presented by METRO representative Lee Skillman all depend on direct access from the Beltway. The designs call for a 40-acre station at the northernmost portion of the SHL tract on the southern side of the Beltway. A storage yard would be located north of the Beltway between the Beltway and Sunnyside Avenue.

The designs call for accommodations for 3,000 automobiles. A novel feature would be the division of the parking lots so that motorists arriving from the west on the Beltway would go to one parking lot and other traffic would go to the other. There will also be accommodations for feeder bus routes.

### Difference in Plans

The main difference in the design plans concerns the access roads. In one case the present bridge into the industrial tract would be used for non-Beltway traffic. In the other case, a special access road would be built off Springhill Drive going west to the station. Which plan is used will also determine whether accesses to the Beltway go over or under the Beltway and whether there will be two separate parking lots or one large parking lot with movable separators.

Both design plans contemplate ramps from the Beltway to receive traffic from the west and return traffic to the westbound lane of the Beltway only. Thus, there would be no direct access from the Beltway to the station for motorists traveling from the east. This means that residents from the Greenbelt core wanting to go to the station would have to take Greenbelt Road and a widened Cherrywood Lane.

### Criticism

This aspect of the plan received the most criticism at Wednesday's meeting, as observers visualized traffic jams along Greenbelt Road as well as a clogged intersection at Greenbelt Road and Cherrywood Lane or increased traffic through the residential parts of the Springhill Lake apartments.

Skillman explained the thinking that went into the design plan. The roads, he said, are to accommodate where the riders come from. SHL is expected to provide 20 percent of the ridership. The Greenbelt core and traffic from the east is expected to draw another 25 percent, with the remainder coming from the west.

13. Expiration of Appointments and Appointments to Community Relations Advisory Board
14. Revenue Sharing - Proposed Use Hearing
15. Swimming Pool Rates
16. Employment of Auditor
17. Community Development Project Proposal

#### V. MISCELLANEOUS

He also noted the technical problems of constructing a Beltway access for traffic coming from the east. State highway regulations require at least 2,000 feet between ramps on the Beltway. To meet this requirement the access from the east would have to be built in the Indian Creek flood plain which is an expensive matter.

### Overpass

Skillman said that the staff recognized the problem for motorists coming from the east and one of the design plans calls for an overpass over the Beltway that would connect Ridge/Crescent Road and an extended Cherrywood Lane (as part of an eventual perimeter road). In this way, motorists from the Greenbelt core could get to the station without using Greenbelt Road. Also SHL residents would be spared the increased traffic that otherwise would have to use SHL streets to get to the station.

Another alternative to help ease the intersection problems at Cherrywood Lane and Greenbelt Road calls for constructing a road parallel to Cherrywood Lane near the A. H. Smith gravel company.

In all these cases of new road construction, the county and/or city would have to bear the costs, since METRO has a policy of only paying for connectors to the nearest public highway.

In response to a suggestion that the station be placed closer to Greenbelt Road, METRO officials pointed out that the lower half of the SHL industrial tract was in a flood plain and that it would be costly to construct on this property and difficult to get State environmental approval.

### Pros and Cons

Asked to list the reasons why the State Department of Transportation favored the I-95 alignment over the ARS alignment, representative Wayne McDaniel gave the following explanation.

The ARS location of a subway station at Prince Georges Plaza is further away from the center of the Plaza than the I-95 line location. The I-95 terminal station will be more convenient for the bulk of riders who will be coming from the west on the Beltway. No new interchanges on the Beltway will be required with the I-95 alignment. The I-95 alignment will avoid the duplication of a subway with the B & O railroad lines and will permit upgrading of commuter service on the latter.

McDaniel also noted, on the other side of the ledger, that the I-95 alignment would cost about \$60 million more than the ARS alignment. Some critics of the I-95 alignment also claim serious environmental impacts, but McDaniel felt that the impacts were about comparable for the two routes. In fact, he noted that I-95 route will not cause the loss of any residential homes, whereas the ARS alignment will require some razing of homes and apartment buildings.

Some observers feel that DOT's evaluation of the routes underestimates the political opposition to the I-95 route. Mass rallies were held two years ago against the route by residents along Adelphi Road and in the West Hyattsville and College Park Woods areas.

Also, it has been noted that a station at Springhill Lake would be serving an on-going residential area within walking distance, whereas an I-95 station would be mainly utilized by motorists.

### Greenbelt Lion Belles

The Greenbelt Lion Belles held their eleventh charter-installation ceremonies at The Golden Bull Restaurant on Feb. 18. Incoming officers for 1977-78 are: president, Angie Lindahl; vice-president, Stephanie Cornett; secretary, Gudrun Mills; treasurer, Mildred Hieber; Golddigger, Mildred Kern.

### WHAT GOES ON

- Thurs., Feb. 24, 7:30 p.m. PTA/PTSA Organizational Meeting at Roosevelt High.  
8 p.m. Greenbelt Homes, Inc. Board Meeting, Hamilton Pl.
- Fri., Feb. 25, 8 p.m. Duplicate Bridge, Youth Center.
- Mon., Feb. 28, 7:30 p.m. County Council Hearing on CDBG Grants, Md. Nat'l Capital Park & Planning Comm.  
7:30 p.m. Task Force Public Hearing for School Closings, area 2B, DuVal Sr. High.  
8 p.m. City Council Meeting, Municipal Building.
- Tues., March 1, 8 p.m. Greenbelt Citizens Com. on School Closing, Municipal Bldg.

**GREENBELT NEWS REVIEW**  
AN INDEPENDENT NEWSPAPER

Editor: Mary Lou Williamson, 474-4906

Associate Editors: Sandra Barnes 474-5310; Elaine Skolnik 474-6060

**STAFF**

Bob Alfaro, Alexander Barnes, Suzanne Batra, Virginia Beauchamp, Corrinne Comulada, Jane Connolly, Judy Goldstein, Marian Harrison, Janet James, Michael Jones, Bernice Kastner, Sid Kastner, Martha Kaufman, Dorothy Lauber, Loretta Levesque, Barbara Likowski, Bob McGee, Roberta McNamara, Olga Penney, Margaret Reynolds, William Schumaker, Pearl Siegel, Al Skolnik, Joanne Tucker, Otilie Van Allen.

Business Manager: Lynette Johnson; Circulation Manager: Joy Greig, 474-6332; Springhill Lake Circulation: Barbara Clawson, 474-4541.

Published every Thursday by Greenbelt Cooperative Publishing Assn. Inc.

**BOARD OF DIRECTORS**

Pres., Al Skolnik; Vice Pres., Sid Kastner; Secy., Barbara Likowski; Treas., Roberta McNamara.

MAIL SUBSCRIPTIONS: \$10.00 per year. Advertising and news articles may be mailed (Box 65, Greenbelt); deposited in our box at the Twin Pines Office; or delivered to the editorial office in the basement of 15 Parkway 474-4131, open after 8 p.m. Tuesday. Deadline is 10 p.m. on Tuesday.

Volume 40, Number 14

Thursday, February 24, 1977

# Greenbriar Owners take Over In Harmonious Atmosphere

by Elaine Skolnik

In an atmosphere of harmony, Greenbriar condominium owners living in Phase II took over control of their section from developers Alan, Jerome and Stanley Kay on February 16 at a meeting held at Eleanor Roosevelt High School.

Phase II has 236 units in 16 buildings. Phase I, which was turned over by the developers to the condominium buyers over a year ago, has 252 units in 17 buildings. When the development is completed, there will be 1,191 apartment units in five Phases.

A large turnout of Phase II owners voted last Tuesday for a 5-member governing board of directors. Elected were Bruce Kerr (3 year term), Charles Sokol (3 year term), William Meister (2 year term), Kathleen Robinson (2 year term), and James Bonds (1 year term). The board will select its officers, and 16 building representatives will be named.

The membership looked for continued good faith to exist between them and the developers who would be serving in a management capacity to the condominium owners' associations of each Phase. They also approved a motion by Joseph Cosby that, in essence, "ratified the belief that it was not in Greenbriar's best interests, nor was it valid, that an article appeared in the media relating to Greenbriar facilities, self-government, builders, etc." Members had expressed concern with "adverse publicity" in the Prince George's Journal relating to a meeting of Phase II owners on January 27 called to work out the mechanics of compiling a list of remedial work to be accomplished by the builders. Cosby was delegated to communicate the dissatisfaction of the members with the articles to the newspaper.

Phase I officers are Margaret Lebkicker, president; Paul Pickering, first vice-president; Jeanette Gordy, second vice-president; Rosii Candland, secretary and Steve Fuller, treasurer. Additionally, there are 17 building representatives.

**Community Problems**

Greenbriar residents have expressed concern that some Eleanor Roosevelt High students were loitering in the apartment hallways, especially during the lunch hours. School officials have been aware of the problem and several students were suspended.

Vice Principal Charles Cockrell notes that students have been cautioned against trespassing and advises that another bulletin on the matter will be distributed soon to all homeroom teachers.

Another matter of concern to Greenbriar residents has been that of students crossing the Baltimore-Washington Parkway and breaking through the fence that surrounds the development to reach the school. They fear a tragedy will occur and urge that parents warn their children of the danger in crossing the heavily trafficked highway. School buses should be used by all Roosevelt students from the core of Greenbelt.

# Public Hearing Monday On Closing Lanham Sch.

The Task Force to Study School Closings for Area 2B will hold a hearing on the possible closing of Lanham Elementary School on Monday, Feb. 28 at 7:30 p.m. at DuVal Senior High School, 9880 Good Luck Rd.

Schools included in Area 2B are: Center and North End Schools, Catherine T. Reed, Magnolia, Gaywood and Lanham Elementary.

The Lanham school was built in 1942 and is the smallest of the six schools. Since it is no longer economical to maintain its cafeteria, lunches are received from a nearby Junior High School.

Lanham has a capacity for 450 pupils. It is currently operating with 343 pupils, at 76.2% utilization. Projected enrollment for 1977-78 is 335. The school also has the largest number of bused children, 259, (except for C. T. Reed which buses all children into the school because of its location along two major roads) as opposed to 117 for Magnolia, 174 for Gaywood, 200 for Center and 203 for North End.

Organizations and individuals wishing to speak may sign up at the beginning of the meeting. Organizations have 5 minutes to present their views; individuals 3 minutes.

# Task Force 4-A Holds Public Hearing

Community Task Force 4A will hold a public hearing for citizen input on possible school closings on Thurs., Feb. 24, at Greenbelt Junior High School in the Multi-Purpose Room from 7 to 10 p.m.

All interested parents and citizens are invited to express their views on recommendations for possible closing of one or more of the following schools: College Park Elementary School, Holly Park Elementary School, and Berwyn Heights Elementary School.

At its meeting on Feb. 17, College Park Elementary was ranked first, Holly Park, second, and Berwyn Heights Elementary, third, for possible closing after a preliminary vote. The Task Force eliminated Springhill Lake Elementary School from consideration for closing because the school is operating at 100% capacity.

It is vital for all citizens to understand that no firm decision has been made at this time. A final decision will be made by the Board of Education.

# Instructors Needed

Volunteer instructors are needed for the Prince Georges County Red Cross Mother's Aide Program for teen-agers between 12 and 16 years of age. It is taught in community centers and schools, wherever the need exists.

There are four, two-hour sessions which stress the responsible and safe way to care for children. Anyone over 18 is welcome to volunteer to instruct the classes. Experience is not necessary since a brief orientation is given by Red Cross nurses. To volunteer, or to set up or take a class, call the Office of Nursing Programs at 559-8500 between 9:00 a.m. and 4:00 p.m. on weekdays.

# Mishkan Torah Notes

Rabbi Kenneth Berger will discuss the holiday of Purim on Fri., Feb. 25 at 8:30 p.m.

Greenbelters Adele Mund and Frank Pearlman will be heard on the "Now Jerusalem" Broadcast, Sun, Feb. 27, from 10:30 a.m. to 12 noon, on radio station WHFS, 102.3 FM.

Starting on Sun., Mar. 6 at 11:30 a.m. Rabbi Berger will conduct an 8-week course on Reconstructionism which will center around the Reconstructionist approach to the Jewish life cycles. Call 474-4223 for more information.

# Chester Silvagni

Chester Silvagni, 76, died Monday, February 21. Born in Italy, he moved to Chicago as a young man and lived there most of his life. He and his wife Ann came to Greenbelt two and a half years ago to live with their daughter, Catherine Harris.

Silvagni is survived by his wife Ann, daughter Catherine, son-in-law James and two grandchildren, Jeanne and Mark.

Funeral and interment will be in Chicago.

# Penny Party at Legion Post

A Penny Party will be held on Fri., Feb. 25 at 7:30 p.m. at the Greenbelt American Legion Post on Greenbelt Road. The party will be sponsored by the Greenbelt American Legion Auxiliary. The public is invited to attend.

# MOWATT MEMORIAL

United Methodist Church

Church School 9:30 a.m.

Morning Worship 11 a.m.

Sermon: The Meaning of Lent

Rev. Clifton D. Cunningham,

Pastor

474-3381 40 Ridge Rd. 474-9410

# PURIM CARNIVAL

for the entire family

MISHKAN TORAH - Ridge & Westway rds.

SUNDAY, FEB. 27, 1-2:30 p.m.

Costume Parade • Games For All

Fortune Teller • Raffle • Prizes

Refreshments by the Men's Club Chefs

No Entry Fee - Fee for games, etc.

# Bahá'í Faith

In recognition of "Black History Month"

Every created thing in the whole universe is but a door leading into His knowledge, a sign of His sovereignty, a revelation of His names, a symbol of His majesty, a token of His power, a means of admittance into His straight path . . .

# Bahá'u'lláh

345-2918  
or  
474-4090

P. O. Box 245  
Greenbelt, Md. 20770

It's still good news . . .

God loves YOU . . .

Discover this for YOUR life.

# GREENBELT BAPTIST CHURCH

474-4812

Bible Study for all ages (Sun)

9:45 am

Sunday Worship

11:00 am & 7:00 pm

Mid-week Service (Wed)

7:30 pm

For bus transportation, call church office 8:30-12:30 weekdays

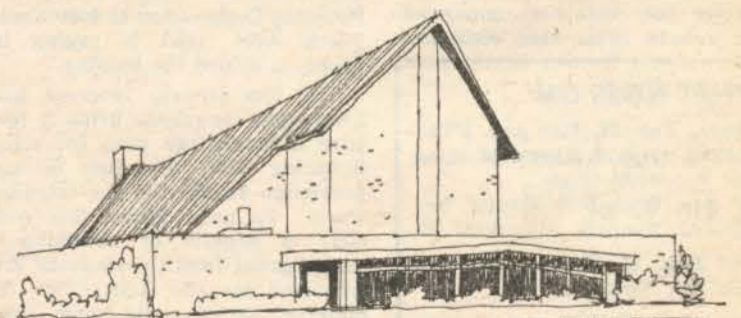
# GREENBELT COMMUNITY CHURCH

(United Church of Christ)

Hillside and Crescent Roads - Phone 474-6171 (mornings)

Sun., 11 a.m. - Worship Service and Church School

Rev. Sherry Taylor and Rev. Harry Taylor, Ministers



# Holy Cross Lutheran Church

6905 Greenbelt Road

Worship Services: 8:30 and 11:15 a.m.

Sunday School: 9:50 a.m.

Weekday Nursery School: 9-11:30 a.m.

Edward H. Birner, Pastor

Phone 345-5111

# FIRST FEDERAL



# SAVINGS & LOAN

OF ANNAPOLIS

Certificates up to 7.75%

yielding 8.17%

All certificates \$1,000.00 minimum  
Federally Insured

There is a substantial penalty on early withdrawal of all certificates.

BELTWAY PLAZA SHOPPING CENTER

GREENBELT, MARYLAND • 474-6004

Main Office: 2024 West St.

Annapolis, Md. 21401



# Photography

by  
J.

Candid Portraits  
Model Portfolios

J. Henson, Photographer

Call . . . 441-9231

## Police Blotter

Sgt. Faulconer charged two male juveniles from Lanham with possession of stolen property when they were found to have \$400 worth of science equipment that had been reported stolen from Eleanor Roosevelt High School. Juvenile court action is pending.

One breaking and entering was reported last week. The responding officers found that the apartment in question was occupied by repairmen who had been requested by the resident to repair a broken window.

Twenty-five juvenile complaints were received. Included in this number were four runaways. All have returned home.

Twenty-five animal complaints were received. The majority were for animals running loose. One dog running loose in the Center area was struck by an auto and killed.

Officers responded several times to a call for disorderly persons at an apartment on Crescent Road. As a result, a 19 year old male resident, was charged by Sgt. Van Valkenburgh with disorderly conduct and assault.

An investigation is being conducted in two larceny cases involving stores at Beltway Plaza. Both reported money stolen.

Lookouts have been issued for a subject who snatched a woman's purse as she was leaving Beltway Plaza. The purse was recovered.

After being advised of a lookout by Prince Georges County for a subject wanted for a larceny in Berwyn Heights. PFC John Lann stopped a suspect who met the description. As a result, the suspect, a 20 year old resident of the City, was charged with assault. He was also charged by Prince Georges County with assault and petty larceny.

An entrance level examination was administered last week to 65 prospective applicants for the one opening on the Department.

## CITY NOTES

Patching of potholes continues. Approximately 14½ tons of cold mix have been used. Electrical and pipe work is being done at the swimming pool. Broken glass was replaced at the Youth Center and Springhill Lake Center.

Work in Greenbriar includes building picnic tables and operating the chipper. Paper and other debris was cleaned from along city streets, including Springhill Lake.

Work is being done on lawnmowers. The paper collection netted 6 tons, 940 lbs. Approximately 170 lbs. of aluminum were taken to Reynolds for recycling. The ducks have been fed.

### Greenbelt CARES

The CARES program was presented at two national conferences. On Feb. 23, Molly G. Schuchat, Ph.D., evaluation consultant, and Leopold Walder, Ph.D., technical consultant presented a paper entitled "Continuous Evaluation of a Youth Services Bureau" to a panel on Alternatives for Treating Juvenile Offenders at the National Conference on Criminal Justice Evaluation at the Sheraton-Park Hotel in Washington, D.C.

On March 1, at the annual meeting of the National Council of Community Mental Health Centers to be held in Atlanta, Georgia, Dr. Walder will describe Greenbelt CARES and a similar program in Baltimore.

A second tutoring workshop was held Feb. 14. Fourteen people were screened and trained, bringing the total tutoring force up to 20 individuals.

## Weekend Courses At Univ. of Md.

Registration for a wide selection of weekend courses in business, English, mathematics, economics, and other fields will be held at the U. of Md. University College March 5 and 26, noon to 1:30 p.m., at the Center of Adult Education, Univ. Blvd. and Adelphi Rd., College Park.

Weekend courses at University College are designed on several schedules to meet the needs of the students. Classes begin the third weekend in March.

All courses offered carry three hours of academic credit towards a U. of Md. degree.

For details and a free copy of the Schedule of Classes call 451-5735.

## Free Concerts at Maryland

The College Band Directors National Association will hold its 19th National Conference at the Univ. of Maryland March 9-11.

Highlighting the conference will be three free public concerts in Tawes Fine Arts Theatre: Wed., March 9, at 8:15 p.m.: the Ohio Univ. Symphonic Band and Univ. of West Virginia Wind Symphony Thurs., March 10, 8:15 p.m.: The "25th Anniversary Concert" of the Eastman Wind Ensemble. Fri., March 11, 8:15 p.m.: Univ. of Md. Symphony Band and Baylor Univ. Wind Ensemble.

The closing Friday evening concert will feature the internationally acclaimed composer Ernst Krenek conducting the World Premier of his Dream Sequences, commissioned for large band by CBDNA.

Additional free events include a concert for organ and wind ensemble at the University Methodist Church on Thursday, March 10 at 4 p.m., and Jazz Concerts in Tawes Fine Arts Theatre each evening of the conference at 11 p.m.

For more information call 454-2501.

## P.G. Little Theatre

The Prince Georges Little Theater will present Woody Allen's romantic comedy "Play It Again, Sam," on March 4, 5, 11, and 12. Showtime is 8:30 p.m. at Charles Carroll Jr. High School, Lamont and Westbrook Dr., New Carrollton.

Greenbelter Dick Simko plays the part of movie star Humphrey Bogart. Tickets are available at the door.



**State Farm Insurance**  
**Ron Borgwardt**

474-8400  
Auto - Life - Homeowners  
16212 Baltimore Blvd.  
College Park, Md. 20740  
(on U.S. 1 at the Beltway)

## PORTER'S LIQUORS

8200 Balto. Blvd. 474-3273  
(next to McDonald's in College Park)

We have the largest selection of Wines from around the world. Special prices on case purchases.

Order Early

Any questions about wines welcomed

## Recreation Review

### Family Roller Skating

Sun., from 1 - 3 p.m. at the Center School, is roller skating for the entire family. All family members are invited.

### Kite Flying Contest

Now is the time to start making kites for the Annual Kite Flying Contest which is only two weeks away. Kites will be judged on Braden Field, Sat. March 12 at 12 noon. Watch the News Review for more details.

### Men's 'B' League Softball

This is a recreational type league with competition on a leisure time level, not affiliated with A.S.A. leagues. Limited to eight (8) teams to play a double round robin (two halves). The winner of this league will be the City's 'B' League champion. Brochures may be picked up in the Youth Center's Bus. Off., Mon. - Fri., 9 - 5 p.m. For information relating to franchise fees and rosters call 474-6878, 9-5 p.m.

Stern's

## SHOE REPAIR

While U Wait  
DISCOUNT PRICES

## Beltway Plaza

around the corner Hanover Shoes

Meltonian Creams & Sprays  
474-9288 M-F 10-9 Sat. 'til 6

## GREENBELT REALTY

A Division of Nyman Realty, Inc.  
151 Centerway  
Greenbelt, Maryland 20770  
474-5700

### PRICED RIGHT

2 BR frame, w/large addition, 1½ bath only \$19,000 - Call for information - 474-5700

### NEED MORE SPACE?

Let us show you this delightful 3 BR frame w/paneled dining area and remodeled kitchen. A real buy at \$18,500. Why not call now? - 474-5700

\$27,500

What are you waiting for?  
Lovely 3 BR Masonry, corner lot, many extras, immaculate. Call now - 474-5700

\$16,500

3 BR Frame - beautifully landscaped lot - all appliances-excellent condition. Call for more information 474-5700.

## REAL ESTATE OFFICE of GREENBELT HOMES, INC.

Hamilton Place  
Greenbelt, Maryland

TURN THOSE RENT DOLLARS INTO HOME OWNERSHIP - MONEY IN YOUR POCKET... AN INVESTMENT IN A CO-OP TOWNHOUSE IS YOUR ANSWER!

For \$15,000 - 2 BR townhouse with large yard extending to wooded area. Improvements - good appliances included.

Two bedroom frame townhouse - has remodeled kitchen & bathroom; washer/dryer/dishwasher/ra/refrg. and air cond. included - \$18,000.

This 2 BR townhouse - located within walking distance of shopping center has front porch enclosed with glass & screen; enlarged closet on courtyard; nice improvements throughout; \$16,605 - May 1st occ.

Other 1, 2 & 3 BR townhouses available - ranging from \$10,000 to \$27,800.

NO APPOINTMENTS NECESSARY - SALES OFFICE OPEN 7 DAYS A WEEK. FOR INFORMATION CALL OUR SALESPeople. THEY WILL BE GLAD TO GIVE YOU ALL DETAILS.

WANT TO SEE A 'SOLD' SIGN ON YOUR GHI HOME? WE WILL GIVE YOU PROMPT, EFFICIENT AND QUALITY SERVICE. LET US TAKE YOUR LISTING!

Mary E. Dixon - Broker

474-4161

474-4244

474-4331

## COME, SUPPORT GHI AND CITY OF GREENBELT APPLICATIONS FOR \$280,000

GHI and the City of Greenbelt have applied to Prince George's County to be included in the County's Community Development Block Grant application to the Federal Government. The County Executive has recommended that GHI be allocated \$150,000 to support its proposed rehabilitation program and the City be allocated \$130,000 for park and street improvements primarily in the GHI area. In order for GHI and the City to receive their grants, the County Council has to approve the County Executive's recommendation. Prior to approving the County Executive's recommendation, the Council will hold a public hearing to see if there is community support for applicants such as GHI and the City of Greenbelt.

GHI and City resident support is needed to demonstrate to the County Council that there is community support for our applications. The public hearing is:

Monday, February 28, 1977

7:30 p.m.

Maryland-National Capital Parks and Planning

Commission's Auditorium

6600 Kenilworth Avenue

I urge you to attend and support GHI and the City of Greenbelt. If you plan to attend or want additional information, please contact Ken Kopstein, GHI Assistant General Manager, telephone 474-5566.

James W. Smith

President

Greenbelt Homes, Inc.

## CITY OF GREENBELT, MARYLAND

## NOTICE OF CHARTER AMENDMENT

On February 7, 1977 the City Council of Greenbelt, Maryland adopted Charter Amendment Resolution Number 1977-1 (Resolution No. 350) and the following Title of the Resolution is a fair summary of the amendment:

### Charter Amendment Resolution Number 1977-1

RESOLUTION OF THE CITY OF GREENBELT ADOPTED PURSUANT TO THE AUTHORITY OF ARTICLE 11E OF THE CONSTITUTION OF MARYLAND AND SECTION 13 OF ARTICLE 23A OF THE ANNOTATED CODE OF MARYLAND (1957 EDITION AS AMENDED), TITLE "CORPORATION-MUNICIPAL," SUBTITLE "HOME RULE," TO AMEND THE CHARTER OF THE CITY OF GREENBELT, SAID CHARTER BEING SUBTITLE 40 OF ARTICLE 17 OF THE CODE OF PUBLIC LOCAL LAWS OF MARYLAND (1963 EDITION AS AMENDED) AND CONTAINING IN WHOLE OR IN PART THE CHARTER OF THE CITY OF GREENBELT, BY REPEALING AND REENACTING WITH AMENDMENTS SECTION 18, TITLE "REGISTRATION FOR ELECTION," TO PROVIDE THAT PERSONS POSSESSING THE QUALIFICATIONS TO VOTE AS PRESCRIBED BY SAID CHARTER SHALL BE ABLE TO REGISTER EITHER IN PERSON OR BY MAIL.

The above amendment shall become and be considered a part of the Charter of the City of Greenbelt, Maryland, according to the terms of the amendment, in all respects to be effective and observed as such, upon the 29th day of March, 1977, unless on or before the fortieth day after passage, which shall be the 19th day of March, 1977, there shall be presented to the Council of the City of Greenbelt, Maryland, or mailed to it by registered mail, a petition for referendum signed by twenty percent or more of the persons qualified to vote in the general election of the City of Greenbelt, requesting that the above Charter Amendment be submitted on referendum to the voters of the City of Greenbelt.

A copy of the above Charter Amendment Resolution is posted in the Greenbelt Municipal Building in accordance with the requirements of Section 13(d) of Article 23A of the Annotated Code of Maryland, and may be obtained from the City Clerk, 25 Crescent Road, Greenbelt, Maryland, Telephone 474-3370 or 474-8000.

James K. Giese, City Manager

**consumers**  
A COOPERATIVE OPEN TO ALL SHOPPERS **CO-OP**

U.S.D.A. CHOICE BEEF BONELESS

**Sirloin Tip Roast**  
**lb. 1.29**

- BONELESS SIRLOIN TIP STEAK ..... lb 1.49  
U.S.D.A. CHOICE BONELESS  
**Strip Steak** lb. 2.59  
U.S.D.A CHOICE BEEF  
**Rib Steaks** lb. 1.49  
U.S.D.A. GRADE A  
**Fryer Breast & Leg Qtrs** lb. 55c

CRISP CALIF.  
**Iceberg Lettuce**  
**2 HEADS 79c**  
**Tomatoes** lb. 59c

- CAL. SUNKIST 88 size  
**Navel Oranges** 10/99c  
LARGE FLORIDA 36 size  
**White Grapefruit** 6/\$1  
LARGE FLORIDA 36 size  
**Red Grapefruit** 5/\$1

BANQUET  
**Macaroni & Cheese**  
**2-lb. pkg. 89c**

- MRS. PAUL'S FAMILY 14-oz. pkg.  
**Fish Sticks & Fish Fillets** 99c  
BEACH HAVEN 3-lb. pkg.  
**Fish Cakes** 1.69  
BOOTH 12-oz. pkg.  
**Fish-Burgers** 89c  
HANOVER 2-lb. pkg.  
**Shoestring Potatoes** 69c  
FOX - 4 VARIETIES 13.5-oz. pkg.  
**Deluxe Pizza** 79c  
RICHFOOD FROZEN 10-oz. pkgs.  
**Green Peas** 4/\$1  
RICHFOOD FROZEN CUT CORN OR  
**Mixed Vegetables** 1-lb., 4-oz. pkgs. 2/\$1

Visit Our Complete  
**Beer & Wine**  
Department

U.S.D.A. GRADE A FROZEN  
**HEN TURKEYS**  
**lb. 39c**  
10-LB. AVG.

**Fresh Fish**  
FOR YOUR LENTEN MEALS

- Cleaned & Headless  
**Croakers** lb. 79c  
**Trout** lb. 79c  
**Bass** lb. 89c

BREAST O' CHICKEN  
CHUNK LIGHT **Tuna**  
**2 6.5-oz. cans \$1**

- Reg. or Sugar Free 1-pt., 12-oz. N.R. btls.  
**Pepsi-Cola** 3-\$1  
CO-OP CREAM OF 10.5-oz. cans  
**Mushroom Soup** 5/\$1  
BUMBLE BEE 15.5-oz. can  
**Pink Salmon** 1.59  
FRENCH'S BIG TATE 1-lb. pkg.  
**Instant Potatoes** 75c  
CO-OP MUSHROOMS, MEAT OR PLAIN qt. jar  
**Spaghetti Sauce** 79c  
CO-OP 5-lb. bag  
**Unbleached Flour** 69c  
THOMAS' TWIN 6 PK. 1-lb., 8-oz. pkg.  
**English Muffins** 99c

SEALTEST  
**Cottage Cheese**  
With Pineapple or Garden Salad  
**12-oz. ctn. 57c**

- KRAFT HALF MOON 10-oz. pkg.  
**Longhorn Cheese** 99c  
BLUE BONNET 1-lb. qtrs.  
**Margarine** 49c  
ROYAL DAIRY pt. ctn.  
**Sour Cream** 59c

**Pillsbury Flour**  
PLAIN  
SAVE 10-lb. 70c bag **1.25** WITH THIS COUPON  
**CO-OP** Effective Feb. 23-Mar. 1, 1977  
Limit One Per Family

SKIPPY CREAMY OR CHUNKY  
**Peanut Butter**  
SAVE 1-lb. 12-oz. 50c jar **1.25** WITH THIS COUPON  
**CO-OP** Effective Feb. 23-Mar. 1, 1977  
Limit One Per Family

PUSS-N-BOOTS MOIST MEALS  
**Cat Food**  
TUNA, LIVER, BEEF, CHICKEN  
SAVE 12-oz. 30c pkg. **45c** WITH THIS COUPON  
**CO-OP** Effective Feb. 23-Mar. 1, 1977  
Limit One Per Family

**Candies**  
M&M PLAIN, MILKY WAY,  
THREE MUSKETEERS, SNICKERS  
SAVE 30c 6-pk. **69c** WITH THIS COUPON  
**CO-OP** Effective Feb. 23-Mar. 1, 1977  
Limit One Per Family

**Brim Coffee**  
ELEC. PERK OR DRIP  
SAVE 1-lb. 70c can **2.99** WITH THIS COUPON 22057  
**CO-OP** Effective Feb. 23-Mar. 1, 1977  
Limit One Per Family

GAINES  
**Top Choice**  
SAVE 4-lb. 8-oz. 30c pkg. **2.35** WITH THIS COUPON  
**CO-OP** Effective Feb. 23-Mar. 1, 1977  
Limit One Per Family

GAINES  
**Top Meal**  
SAVE 25-lb. 80c bag **5.99** WITH THIS COUPON  
**CO-OP** Effective Feb. 23-Mar. 1, 1977  
Limit One Per Family

PRICES EFFECTIVE FEB. 23 - MARCH 1, 1977

We reserve the right to limit sale items to 3 units per customer.

# GREENBELT CO-OP

121 CENTERWAY  
OPEN DAILY 9-9, SUN. 10-6

**DIAL TRUTH**

**EVERY DAY**

Recorded music and inspiration by telephone

**270-9000**

# Before we could raise the flag, we had to raise the money.



And it wasn't because Betsy Ross charged too much.

Building an independent nation cost plenty. In lives, in property, and yes, in money.

So, our Founding Fathers asked their fellow Americans to take stock in their country.

And we did. To the tune of \$27,000,000.

With that kind of support, it's no wonder that, after the smoke cleared, the star-spangled banner kept waving.

Yes, folks really took stock

in their country back then. And you still can by buying United States Savings Bonds.

Because when you join the Payroll Savings Plan at work or the Bond-A-Month Plan where you save, you're investing in a brighter future for you and for America.

So buy United States Savings Bonds. They're a great way to raise the flag. Or a family.



## Take stock in America.

200 years at the same location.

Now E Bonds pay 6% interest when held to maturity of 5 years (4 1/2% the first year). Lost, stolen or destroyed Bonds can be replaced if records are provided. When needed, Bonds can be cashed at your bank. Interest is not subject to state or local income taxes, and federal tax may be deferred until redemption.



### Boys and Girls Club

All memberships expire in March. Membership sign-ups will take place on March 12 and 19 between 12 noon and 3 p.m. at the Youth Center and SHL Rec. Center. All residents of Greenbelt between the ages of 8 and 17 are eligible to join. Anyone who has not previously belonged to the club must bring a copy of his birth certificate for club records. This one sign up is good for all sports. The new 4" Boys and Girls Club Patch will be given, free, to each member who signs up in March. Additional patches may be purchased for a fee. Raffle tickets will be on sale and orders will be taken for Boys and Girls Club license tags and for the new Boys and Girls Club jacket. The jacket is kelly green nylon with Boys and Girls Club in white lettering on the back and a place on the front to sew the patch that will be given to members at sign-ups.

Anyone who enjoys working with youth and has time to spare should call Pat Gainor, 474-3649. Coaches are needed for all sports. Assistant coaches are also needed.

There are a little over 2 weeks of the basketball season left. Home games for the week of Feb. 27 are: Mar. 1 at Youth Center - 7 p.m., 11 yr. boys and 8 p.m., 14 yr. boys, Mar. 3 at Youth Center - 6 p.m., 12 yr. boys and 7 p.m., 17 yr. boys.

There will be a Board of Directors meeting on Wed., Mar. 2 at 7:30 p.m.

### Gas Rates Reduced

The Washington Gas Light Company announced recently that the system charges to residential customers have been reduced effective February 1, as a result of an order by the Maryland Public Service Commission. The order only affects residential customers in Maryland.

The system charge is one part of the Company's new two-part rate structure which was approved by the Public Service Commission last November. The system charge is a monthly charge to cover, in part, the company's fixed costs of providing service. Customers also pay a flat charge for each unit of gas used.

### The 4-H Chipmunks

by Persa Batra

The Chipmunks elected officers. They were: Terry Osika, president, Timmy Savage, vice president, Mira Batra, secretary, Margaret Williamson, treasurer, Persa Batra, reporter, Cole Lauber, game leader, and Angela Brinkley song leader.

Last December we had a cake and plant sale. We made \$27.11 from it. We held the sale at the center mall.

The projects we are working on are electricity, cooking and bicycles.

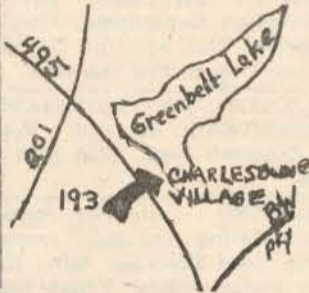
### WINTER SWIMMING

Winter swimming, which had previously been cancelled for Sun., February 27 has been rescheduled for that date. Please call Bob Greig at 474-0332 for more information.

### Kool Klovers 4-H Club

The Kool Klovers 4-H group will have its next meeting Mon., Feb. 28, at 7:30 p.m. at Karen Jones' home, 113 Northway Rd. Jim Rohrbach, county extension agent, will be the featured guest. He will review parliamentary procedure and project books. All are invited.

## CHARLESTOWNE VILLAGE



LUXURY 2 & 3 BEDROOM TOWNHOUSES  
ENGLISH STYLE 1 & 2 BEDROOM  
TERRACE APARTMENTS  
MID \$20's to HIGH \$30's

- Unique lakefront (2-mile perimeter) location on Greenbelt Lake Park with fishing, boating, ice skating, jogging, bicycle paths, picnic areas and bandstands, scenic atmosphere.
- Traditional colonial style with charm of courtyard setting.
- Tennis courts, pool facilities, playgrounds.
- Conveniently located close to shopping and transportation at crossroads of Baltimore-Washington Parkway, Capital Beltway (Rt. 495), Kenilworth Ave. (Rt. 201), and University Blvd. (Rt. 193).
- Only a few available, so hurry!

### CHARLES T. FINLEY REALTY, Inc.



5401 KENILWORTH AVENUE  
RIVERDALE, MD. 20840

779-4777



# TENNIS

TENNIS ANYONE? announces  
new six-week

INDOOR INSTRUCTION SESSION  
STARTING WEEK OF FEB. 27.

Private • Semi-private • Group  
Beltsville & Calverton locations

Singles court available for practice with ball machine

Call 596-3838



## Greenbelt Pizza - Sub Shop

IT'S TOE SMACKING DELICIOUS

SPECIALS OF THE WEEK

Thursday - Introducing the one & only

SCRAMBLE SHAMBLE LARGE PIZZA .....\$3.25

Friday - Extra Large Pepperoni Pizza .....\$3.95

Saturday - Royal Steak Sub ..... 90c

Monday - Meatball Sub .....95c

Tuesday - Royal Steak Sub .....90c

Wednesday - Quarter Pound Hamburger .....59c

107 CENTERWAY

474-4998

## DO-IT-YOURSELF AUTO REPAIR

# BAY RENTAL

BY THE HOUR

# 3.50

LIFTS & LUBE EQUIPMENT AVAILABLE

EVENING HOURS 6-9

SUNDAY - ALL DAY

Offer good thru  
Feb. 28, 1977

We Honor: Bank Americard  
Master Charge



CO-OP  
SERVICE STATION

20 SOUTHWAY 474-6111

Official Notice



## TWIN PINES SAVINGS AND LOAN ASSOCIATION

20th Annual Meeting of the Members

Tuesday, March 22, 1977 at 8 p.m.

City Council Meeting Room, City Office Bldg.

24 Crescent Road, Greenbelt, Maryland

### AGENDA

- REPORTS BY PRESIDENT, TREASURER, MEMBER RELATIONS COMMITTEE, NOMINATIONS AND ELECTIONS COMMITTEE, AND LOAN COMMITTEE
- ANNUAL ELECTIONS
- FORMATION OF AN AD HOC COMMITTEE OF MEMBERS TO CONSIDER REVISION OF THE BY-LAWS, ESPECIALLY WITH REGARD TO PROCEDURES FOR NOMINATION AND ELECTION
- CONSIDERATION OF STIPENDS FOR DIRECTORS AND FOR MEMBERS OF THE MEMBER RELATIONS AND THE NOMINATIONS AND ELECTIONS COMMITTEES

### CANDIDATES FOR ELECTION:

(nominated by committee)

Board of Directors  
(Three are to be elected to terms of three years):

Henry R. Fisher  
George R. Jones  
William P. Morin  
Joseph R. Timer  
Peter J. Watters  
John S. Webb

Member Relations Committee  
(Three are to be elected to terms of two years and one to a term of one year):

J. R. (Bob) Greig  
Michael T. Jones  
Thomas J. Martin  
Wayne W. Spang, Jr.

Nominations and Elections Committee (three are to be elected to terms of two years and two alternates are to be elected to terms of one year):

Sonia G. Garin  
Helen S. Geller  
John S. Golombe  
Katherine Keene  
Miriam C. Reynolds

Biographies of these candidates will be printed next week.

All members of Twin Pines Savings and Loan Association are encouraged to attend this meeting or to vote by proxy. For your convenience, proxy ballots and copies of the present by-laws will be available at the Twin Pines office, 105 Centerway, Greenbelt, Maryland, 20770 after February 28, 1977. Proxies may be turned in at the office until 6 p.m., Monday, March 21.

## YOUR MONEY WORKS FOR YOU

AT

## GREENBELT FEDERAL CREDIT UNION

Current Dividend  
Paid Quarterly

# 6

PLUS UP TO \$2,000 FREE LIFE INSURANCE

Each member account insured to \$40,000 by Administrator, National Credit Union Administration an agency of the U.S. Government

121 Centerway (Shopping Center)

Greenbelt, Md. 20770

Phone: 474-5900

Hours: Daily: 9-3

Saturdays: 9-1

Friday evening 7-9