

# Greenbelt News Review

AN INDEPENDENT NEWSPAPER

Volume 39, Number 16

GREENBELT, MARYLAND

Thursday, March 4, 1976

## ROOSEVELT TREATED ROUGHLY

### School Board Reverses Decisions On Open Enrollment, Boundaries

by Elaine and Al Skolnik

A series of last-minute decisions by the majority of the Prince Georges County Board of Education succeeded in undermining the transfer policy and truncating the boundaries of the new Eleanor Roosevelt senior high school in a stormy session on Thursday, February 26. Succumbing to public sentiments expressed the previous night at a public hearing, the school board hastily approved a recommendation of the school board staff that 114 Bowie area students scheduled to attend DuVal and Largo senior high schools would be allowed to remain at Bowie senior high school. At the same time, 203 students from the Seabrook area were withdrawn from the Roosevelt pupil attendance area and allowed to continue at DuVal Senior high school.

As a result of this decision, the Bowie school will be 570 students over its capacity and the DuVal school 142 under. To help relieve the overcrowding in Bowie, the Superintendent of Schools was directed to spend additional sums to accommodate the Bowie school system, which may include introduction of the middle school concept.

#### Back to Open Enrollment

In addition, the school board voted 5-3 (with board members Jesse Warr, Lesley Kreimer, and Maureen Steinecke opposed) to revise its transfer policy so that the 400 additional spaces reserved at Roosevelt for such transfers could be filled by students on a first-come, first-served basis without meeting any criteria except the one that their transfer will not tip racial balances, at least for the first year. The board had on May 26, 1975, adopted a policy that no new school will open below 10 percent or above 50 percent black, and that no new school will be permitted to tip other schools beyond these percentages.

This decision was interpreted as reintroducing the concept of open enrollment, a policy which the city of Greenbelt had strongly opposed because of the danger of tipping of racial balances, the additional transportation costs, and the uncertainty produced in school planning and programming.

#### New Roosevelt Boundaries

With the removal of 203 students from the Roosevelt boundary area, the school is now left with 655 tenth and eleventh grade students from fixed boundaries. Kreimer, Steinecke, and Warr objected to this decision mainly on the grounds that it could be difficult to guarantee a full instructional program for students attending the comprehensive school, especially since one would not know until the last minute how many transfers (of the 400) would materialize. Hassel said later that "the goal for Roosevelt is a full program for tenth and eleventh graders." (Twelfth graders will be allowed to graduate at their present schools.)

Steinecke observed that State board policy states that students should have assurance of stability and not be subject to the threat of shifts each year. She and Kreimer felt that with the small enrollment at Roosevelt, boundary changes would have to be made each year (instead of one time), thus undermining the stability of neighborhoods. They argued fruitlessly for a compromise that would exclude those presently enrolled at DuVal and assign incoming tenth graders to Roosevelt.

But the plebiscite approach prevailed as a stream of students from DuVal as well as some parents and PTA representatives spoke against shifting. "If New Carrollton students can remain at Largo, and Bowie students at Bowie, why can't we stay at DuVal?" was the theme. One parent's plaint was "School spirit will suffer and kids will be demoralized and not do so well scholastically." In an obvious retort to Bowie parents who objected to sending their children to an

inferior school, one DuVal area parent proclaimed that she had two sons as college graduates "who got their excellent math and science background at DuVal, not Bowie."

#### New Transfer Policy

The move toward open enrollment was made upon Kathleen Barker's motion after receiving an opinion from school board attorney Paul Nussbaum that the 400 students desiring to transfer to Roosevelt need not necessarily meet the criteria of the board's transfer policy adopted on November 10, 1970. This policy had been set up to avoid transfers by white students wishing to avoid desegregation plans by requiring each student to justify his transfer in terms of individual academic needs, health, economic hardship, or personal adjustment.

Nussbaum was responding to an inquiry by board chairman Sue Mills who felt there were ambiguities in the board resolution of February 12, particularly resolve 3 - "that 400 spaces at Eleanor Roosevelt be reserved for students wishing to transfer in, in accordance with present board policy on transfers." Nussbaum said that one could possibly interpret these 400 students as having already transferred.

As the maker of the above resolution that called for the 400 transfers, Steinecke took great exception to this interpretation. She said the intent of her motion was to apply the present transfer policy which has been and still is in operation since November 1970. She said that in all the years she had attended the school board she had never heard of this concept of "already transferred." She also referred to the Feb. 12 minutes which quoted Barker as acknowledging that the 400 students would be assigned in accordance with present board policy on transfers.

Steinecke said she was "terrified" that this entering wedge of open enrollment would land the board back in the courts. Superintendent Carl Hassel said that his staff would monitor this operation very carefully and would cease transfers when they reached the point of tipping racial balances at any school.

#### Bowie Preferential Treatment?

Warr charged that the Bowie community was receiving preferential treatment. Hassel had asked the board to authorize him to proceed to develop the "most educationally sound" plan for housing the Bowie students within the present boundaries of Bowie high school. Warr contended that Hassel had yielded to political influences.

Warr said that the cost to the county of renovating Bowie school would range from \$30,000 to \$50,000, "but nothing is being said about where the money is coming from. We are strapped financially, there are other communities talking about stability, and we contravene board policy by allowing Bowie to have 14 temporaries and to go 500 students overcapacity. At the same time, we paid \$11 million for Roosevelt and seem to be heading toward the inane position of

#### WHAT GOES ON

Sat., March 6, 10 a.m. - 1 p.m.  
Little League Registration  
Greenbelt Youth Center  
Mon., March 8, 8 p.m. Registration  
for Greenbelt Coop Nursery School Building behind  
Community Church  
Wed., March 10, 11 a.m. Greenbelt  
Morning Theatre "City  
Out of Wilderness: Washington,  
D.C.;" "This Is New  
York", Library  
Thurs., March 11, 8 p.m. GHI  
Board Meeting, Hamilton Pl.

### Staff Gets Cracking On New High School

With the concept of the Eleanor Roosevelt Senior High School pinned down as a comprehensive school with a technical component, G. James Gholson, assistant superintendent of the county's northern area school system, set the wheels in motion for the opening of the school in September 1976.

In a 4½-hour work session on February 25, some 50 department heads and staff members discussed such matters as school philosophy, goals, programs, curriculum, staff, transportation organization and management problems and school/community involvement. Specific tasks were assigned and the group will meet again next week.

#### Forum on Use of Schools

An open forum to discuss after-school use of public school buildings will be held on Monday, March 8, 7:30 p.m. at the M-NC-PPC Regional Office Building, 6600 Kenilworth Ave. This is one of a series of forums on this topic being held throughout the county. For information call 627-4800, ext. 203 or 277-2200, ext. 336.

### Parent's Forum

The next meeting of the Greenbelt Parent Discussion Group will be held Wed., March 10 from 9:30-11:30 a.m. at the Greenbelt Baptist Church. The discussion topic will be a continuation of "The Multiple Roles of Today's Mother." Refreshments are served and babysitting is provided.

leaving it half-vacant. We should be looking at the whole county," he concluded.

Following this up, Kreimer and Steinecke moved that the superintendent be directed to come back to the board with his cost recommendations for Bowie. They pointed out that money for the Bowie plan was not in the school budget. But Norman Saunders, with the support of the 5-member majority, voted to give the superintendent the latitude to handle the Bowie problem because of his "expertise."

After the meeting, Steinecke pointed out the inconsistency: "This board will not let the superintendent transfer \$5,000 of funds for any project, yet now they are authorizing up to a ¼ million dollars for a Bowie plan without knowing what the costs will be."

#### Transportation Problems

The superintendent acknowledged that the Roosevelt school, especially the technological portion, will cause problems for the transportation department, because its boundaries will be contiguous with those of the county. He said that students should be prepared to attend Roosevelt on a 10 a.m. to 4:30 p.m. schedule because of the need for existing buses to make additional trips. Students from non-fixed boundaries transferring to the comprehensive component of the new school are generally not entitled to transportation.

## Performance of School Board

Well, it blew it. The Prince Georges County Board of Education was just gaining some stature as a responsible body able to resolve differences in a reasonable, mature, and far-sighted way. Then at last Thursday's (February 26) meeting, it reverted to form, allowed parochial interests to predominate over the county interest in high quality education, and proceeded to upset the previous arrangements for the Eleanor Roosevelt senior high school and related matters.

First, it reduced the number of students attending the 2,360-capacity Roosevelt school from fixed boundaries from 858 to 655.

Second, it adopted what is in effect an open enrollment policy. Four hundred additional students will be allowed to transfer to Roosevelt from anywhere in the county on a first-come, first-served basis with no restrictions, except that bus transportation will generally not be provided. Such transfers would not be permitted to tip racial balances in any school, but only for the first year.

Third, it directed that all Bowie students be retained within the boundaries of the Bowie senior high school, which would then be 570 students over capacity. To meet this overcrowding, the superintendent was given carte blanche authority to spend up to \$250,000 needed to accommodate these students.

The one thing unchanged was the concept of Eleanor Roosevelt as a comprehensive school with a technical component. And, of course, the assignment of all Greenbelt area students (incoming 10th and 11th graders) to the new school.

No one can fully predict what the consequences of these actions will be, but the dangers are many. Limiting the number of students attending Roosevelt may inhibit the staff from offering a full instructional program to students. Open enrollment, by eventually tipping racial balances, could lead to court intervention that may subject all areas in the county to inspection, including Bowie with its 11% black school ratio. Preferential expenditures of funds to accommodate Bowie's overcrowded schools may result in the short-changing of funds for other critical parts of the county.

Whenever a new school is opened, there are always some transitory inconveniences as students are shifted from one attendance area to another. But this is accepted as the price to be paid for adding a modern plant to the system that will help relieve overcrowded conditions in other schools. By bowing to provincial interests, the school board has managed to perpetuate overcrowded schools and impair quality education while still having to wrestle with the same problem again next school year.

In the meantime, the maneuverings and intrigue that began last October with respect to the Roosevelt school have succeeded in producing the kind of adverse conditions that will make an orderly opening of Roosevelt in September 1976 a very difficult thing. We sympathize with the school board staff who will now have to set about arranging classes, ordering supplies, and assigning instructors for a student body of unknown size and composition.

### Recreation Review

#### Kava Teen Dance

A teen dance has been scheduled at the Youth Center on Saturday, March 6, from 8-11 p.m. 'Menagerie,' a popular local band, will provide the music. All teens are encouraged to attend. A fee will be charged at the door.

#### Family Roller Skating

There are only two more Sundays left to roller skate with the family at Center School on Sun. from 1-3 p.m. Families can bring their own skates or rent them. A nominal fee will be charged at the door.

#### Kite Flying Contest

Only one week left before the Annual Kite Flying Contest. Kites will be judged on Braden Field, Sat., March 13 at noon. Raindate is Sat., March 20, noon. Trophies will be awarded for the largest kite, smallest kite, highest flying kite, youngest flyer, oldest flyer, most unusual kite, prettiest kite and a family speed race. All kites must fly to qualify for trophies. Call 474-6878 for further details.

### Garden Club Meets

Garden Club members who ordered fertilizer and lime may pick up their materials at the Municipal Warehouse adjacent to the lake-park on Fri., March 5, from 4 to 6 p.m. and on Sat., March 6, from 8 to 10 a.m. There has been a slight increase in the quoted cost of lime.

On Tues., March 9, at 7:30 p.m. at the Greenbelt Library there will be a presentation of "Grow It" (concerning vegetable and fruit production, soil preparation, weed and insect control). This is a repeat of the January program, and should be helpful to new gardeners.

### Little League Registration

Registration for the Greenbelt Little League will be held Sat., March 6 and Sat., March 13 from 10 a.m. to 1 p.m. at the Greenbelt Youth Center. Boys and girls aged eight to 12 may register. A copy of the applicant's birth certificate or other proof of age is required.

## YOUR Annual Ambulance Club Drive will start in April

Your most recently purchased ambulance, which was bought in March of 1975, will be on display in the Center Friday, March 12, 7 p.m. to 9 p.m., and Saturday, March 13, 10 a.m. to 4 p.m.

As the average life of an ambulance is three years, we are presently replacing the ambulance purchased in 1970 with one similar to that being displayed. The new ambulance will be equipped with radio capabilities for communications between the ambulance and the hospital. It is also designed so necessary life-saving functions can be conducted while enroute to the hospital.

We are asking for an increase this year from \$3.65 to \$5.00 to provide you with adequate ambulance service for the next year. This \$5.00 entitles you to membership in the Ambulance Club. Due to the increased costs we find it necessary to charge non-members for ambulance service.

A supplemental flyer will be issued by this Department to the citizens to explain the financial requirements needed.

M. W. Dutton  
Chief  
Greenbelt Volunteer  
Fire Department and  
Rescue Squad, Inc.

**STAFF**  
 Alexander Barnes, Virginia Beauchamp, Ann Bolt, Mary Clarke, Jane Connolly, Miriam Cornelijs, Theresa Crowley, Judy Goldstein, Bernice Kastner, Sid Kastner, Martha Kaufman, Barbara Lane, Sue Lange, Dorothy Lauber, Jean Levesque, Loretta Levesque, Lawrence Levine, Barbara Likowski, Paula Mask, Bob McGee, Roberta McNamara, Wini Milan, Olga Penney, Al Skolnik, Elaine Skolnik, Ottilie Van Allen.  
**Business Manager:** Adele Mund; **Springhill Lake Circulation:** Barbara Clawson, 474-4541, **Circulation Manager:** Lynette Johnson, 345-1916.  
**Published every Thursday by Greenbelt Cooperative Publishing Assn., Inc.**  
**BOARD OF DIRECTORS**  
 Pres., Al Skolnik; Vice Pres., Sid Kastner; Secy., Barbara Likowski; Treas., Roberta McNamara, Paula Mask.  
**MAIL SUBSCRIPTIONS:** \$10.00 per year. Advertising and news articles may be mailed (Box 68, Greenbelt); deposited in our box at the Twin Pines Office; or delivered to the editorial office in the basement of 15 Parkway (474-4131), open after 8 p.m. Tuesday. **Deadline is 10 p.m. on Tuesday.**

Volume 39, Number 16 Thursday, March 4, 1976

**Compliments to Greenbelt To the Editor:**

If compliments are in order for Greenbelt's efforts on behalf of the opening of the Eleanor Roosevelt High School, I welcome the opportunity to compliment all the citizens who participated on the Greenbelt Citizens Committee and the city government for its strong and effective actions.

The facts of the Board of Education's decision are reported comprehensively in this issue. As chairperson of the committee, I would like to offer a review of the results.

1. The original concern of Greenbelt parents, that our students would be included in the school boundaries, is settled to our satisfaction.

2. Our second concern, that decisions not be delayed so long that the school would not be able to open in September, is also settled. The staff of the Board of Education is hard at work on plans for opening the school in September.

3. Our desire was that the school be opened as a comprehensive high school, as it was designed. The school will open as a comprehensive/technical school. We have been told that "technical" will be defined as a scientifically oriented/mathematics oriented curriculum and that this program will be phased into the school.

4. We also worked hard for fixed boundaries around the entire school in opposition to the goal of some board members that the entire student body of the school be drawn by open enrollment. Boundaries are fixed to include Greenbelt and nearby locations. However, 400 students will be permitted to enroll from any part of the county into the comprehensive portion of the school without having to meet present school board policy on transfers. In the technical portion, there is space for about 700 students from any part of the county who meet the enrollment requirements (these are not yet formulated).

The purposes for which the Greenbelt Citizens Committee for the Eleanor Roosevelt High School was organized are probably accomplished at this point. But this interested and concerned group of citizens can logically become the guardians of Greenbelt's concept of a quality educational experience for our children and all those who will attend the school.

During the past week, several citizens participated with the staff of the Board of Education in the initial planning for the opening of the school. Parents gave their views on the concerns of the community in a school/community committee session. Plans will be made for a community meeting with the principal (not yet appointed) and for a tour through the school and for the forming of parents into a Parents Advisory Council. The background and insights we Greenbelt parents have gained in these past months can be and will be put to constructive uses.

Compliments again to the spirit of Greenbelt as we move toward the opening of the Eleanor Roosevelt High School.

Muriel Weidenfeld, Chairperson  
 Greenbelt Citizens Committee  
 for the Eleanor Roosevelt  
 High School

**Mishkan Torah News**

The Mishkan Torah Players' Experimental Theatre will present "A Jewish Valentine" at the synagogue, on Sat. March 6, at 9:30 a.m. The performance will feature "A Journey of Love Through Jewish Writings from the Bible to the Modern Poets of Israel Today." The community is invited.

The Jewish Community in the Netherlands will be discussed on Fri., March 5 at 8:30 p.m.

**Police Blotter**

Residents in the area of Hillside Road are warned to take extra precautions following five attempted breaking and enterings in the area during the week. In all the incidents, casement windows were either broken or forced open at about midnight on various nights. The Department has taken steps to apprehend the perpetrator. Citizens are cautioned to keep their doors locked when at home as well as when they are away.

A 20 year old resident of Ridge Road, while "hotrodding" on a city street, observed a patrolling officer, and while attempting to reduce speed, lost control and struck two parked autos. The operator was charged.

Four acts of vandalism were reported, two of which were closed with the apprehension of the juveniles involved. Parents will be making restitution in both cases.

A family on Westway Road awakened during the night hours, found a burglar in their apartment. The suspect fled, eluding police who searched the area. The resident had failed to lock the patio door.


One breaking and entering in the University Square Apartments did not result in any loss, but the responsible party left five chickens and a pig in the resident's apartment. No motive has been developed for this somewhat peculiar incident.

**MOVING?**  
 Flat Rate or Hourly  
 Experienced & Dependable  
**MARYLAND STATE MOVERS**  
 552-2019  
**FREE ESTIMATES**

  
**State Farm Insurance**  
 Ron Borgwardt  
 474-8400  
 Auto - Life - Homeowners  
 10212 Baltimore Blvd.  
 College Park, Md. 20740  
 (on U.S. 1 at the Beltway)

**NEED HOME REPAIRS?**  
 Call the Handyman anytime  
**552-1059**  
 Special Discount for Senior Citizens on 1 coat painting

**Stern's SHOE REPAIR**  
 While U Wait DISCOUNT PRICES  
**Beltway Plaza**  
 around the corner Hanover Shoes  
 Meltonian Creams & Sprays  
 474-9288 M-F 10-9 Sat. 'til 6

**Holy Cross Lutheran Church**  
  
 6905 Greenbelt Rd.  
**Worship Services**  
 8:30 and 11:15 A.M.  
**Sunday School 9:50 A.M.**  
**Weekday Nursery School**  
 9:00 - 11:30 A.M.  
 Phone 345-5111  
 Edward H. Birner, Pastor

  
**F. JOHNSON of IN-HOME TV SERVICE**  
 Visits this area 4 days each week and some evenings.  
 ✓ 17 yrs. servicing all makes  
 ✓ With references, license & bond  
 ✓ Published rates & guarantees  
 ✓ Always estimate  
 ✓ All estimates correct within 10%  
**Call 588-4166 on**  
 Weekdays or 565-0001 on evenings & weekends.


**GREENBELT FIRE DEPT. DANCE**  
**SAT., MAR. 20**  
 With Star Machine  
**\$5.00 couple** **\$3.00 single**  
 Only 50c for 12 oz. can of Schlitz

**GREEN PLANTS & PETALS**  
 THIS WEEK'S SPECIAL  
**Carnations \$3.00 doz. reg. \$5.00 doz.**  
 Located at the rear (parking lot) of Co-op  
 Hours 9:30 a.m. - 8:30 p.m. Mon. - Sat.  
 10 a.m. - 6 p.m. Sundays  
**474-7779**

**UNIVERSITY BOUTIQUE INTERNATIONAL**  
 Spring has arrived at our Boutique!  
 Our racks are now filled with lovely light-weight cotton blouses w. matching skirts, below-the-knee length dresses, new shirts, halters, scarves and shawls - all in fresh spring colors. We also carry wide legged draw-string pants, new tops, capes and jackets in crinkle cotton with hand crocheted trimmings from Greece... and DANSKIN tank leotards.  
 7420 Baltimore Ave., College Park, open 11 a.m. - 6 p.m. daily

**UNITED METHODIST CHURCH**  
 (Mowatt Memorial 40 Ridge Rd., Greenbelt, Md. 474-9410)  
 Church School 9:30 A.M. (For ALL Ages)  
 Morning Worship - 11:00 A.M.  
 Holy Communion  
 Nursery Care for Infants Through Kindergarten  
 Rev. Clifton D. Cunningham (474-3381 474-9410)

**GREENBELT COMMUNITY CHURCH**  
 (United Church of Christ)  
 Hillside and Crescent Roads - Phone 474-6171 (mornings)  
 Sun. - 11 a.m. Worship Service and Church School  
 Infant Care at 2-B Hillside  
 Wed., Mar. 10, 7:30 a.m. Communion Breakfast  
 Rev. Sherry Taylor and Rev. Harry Taylor Ministers

The  is God's plus sign. It says, God plus your life can make a difference. Let Him put the plus in your life!  
**GREENBELT BAPTIST CHURCH**  
 474-4212  
 Bible Study for all ages (Sun) 9:45 am  
 Sunday Worship 11:00 am & 7:00 pm  
 Mid-week Service (Wed) 7:30 pm  
 For bus transportation, call church office 8:30-12:30 weekdays

**Bahai Faith**  
 What is God's purpose for mankind?  
 Does man in the beginning possess mind and spirit or are they an outcome of his evolution?  
 What is the most challenging issue facing the American nation?  
 Join us for discussions and answers to these and other questions relative to the spiritual being of our world.  
 Place: 8150 Lakecrest Drive #806  
 Greenbelt, Md.  
 Time: Each Tuesday, 8:00 P.M.  
 Telephone or write  
 345-2918 P.O. Box 245  
 or Greenbelt  
 474-4090 Md. 20770

**Twin Pines Savings & Loan Assn.**  
 Greenbelt, Maryland  
 474-6900  
 Maryland Savings-Share Insurance Corporation  
 Insures each account to \$40,000.00  
**5 1/2% Regular Savings**  
 from day of deposit \*\*\*\*\*  
**OPEN YOUR ACCOUNT BY MAIL**  
 BANK BY MAIL  
 (POSTAGE PAID)  
**HOURS**  
 MON thru THURS.  
 9 to 6-  
 FRIDAY  
 9 to 8  
 SATURDAY  
 9 to 12  
  
  
 Notary Service Available (free to account holders)  
 Xerox copies 10c  
 Money Orders 20c up to \$250.00  
 \*\*\*\*\* payable quarterly

## CLASSIFIED

\$1.50 for a 10-word minimum, 10c for each additional word. Submit ads in writing, accompanied by cash payment, either to the News Review office at 15 Parkway before 10 p.m. of the Tuesday preceding publication, or to the Twin Pines Savings and Loan office.

There is no charge for advertising items that are found.

**CALDWELL'S WASHER SERVICE.** All makes expertly repaired. Authorized Whirlpool dealer. GR 4-5515.

**PIANO TUNING AND REPAIR** - Expert and Reliable Piano Service to Greenbelt since 1960. Benjamin Berkofsky 474-6894.

**TYPEWRITER REPAIR, ELECTRIC, STANDARD AND PORTABLES.** Call 474-6018.

**CLARINET LESSONS:** 1st Clarinet, U. S. Army Field Band, BM degree Peabody Conservatory. Beginners - Advanced 474-9222.

### ANTENNA PROBLEMS

Sales & Service

Expert antenna man will install new/repair antenna for

Attic or Outdoors  
474-5530

**LIGHT HAULING,** w/ pick-up Truck. Call Mike after 4:30, 474-9401.

**(MARIE'S POODLE GROOMING)** make your appointments today. Call 474-3219.

**PIANO LESSONS:** Peabody Conservatory Graduate. Beginners-Advanced. 474-9222.

**BEAUTIFY your furniture** - fabric selection - Free Estimate - Quality work - Prompt service. **THE UPHOLSTERY SHOP** 441-2062.

**GUITAR LESSONS** by former university instructor of classical guitar. All styles of playing taught to all ages. Fred 474-1649.

**WEDDING PHOTOGRAPHY** at low rates; packages from \$45. Call 245-3581 for appt.

**LAMPS REPAIRED** - Floor and Table types Call 474-5530.

**INCOME TAX Returns Prepared.** J. Mousley, 474-6045.

**TROMBONE TRUMPET and VOICE LESSONS.** Professional musician with degree. 474-5945.

**VACUUM CLEANER REPAIR** - All brands and types. Call 474-5530.

**FEDERAL & STATE Tax returns** prepared in your home Call Mr. Ginsberg 924-2638.

### HOUSE DOCTOR

Expert craftsman will replace broken window glass, misc. electrical jobs, wall patching, ceramic tile, etc. Assemble sheds and yard duties. Call anytime.

474-5530

**INCOME TAX RETURNS** prepared by retired revenue agent. Reasonable rates. Phone 345-8634.

**SCUBA GEAR** - U.S. Divers tank, back pack, regulator, weight belt, never been used. 345-7147.

**YARD NEEDED CLEANING?** Hedges need cutting? Call me. Freddy (\$6/hr.) Baluch. 474-9409.

24 Hr. Emergency electrical or plumbing service, call 474-3610.

**WANTED:** Small desk to be used as Vanity. Call 474-4272.

**PAINTING, GLAZING, SMALL REPAIRS** inside-outside, experienced & cheap. Bill, 474-3832 anytime.

**WILL BABY SIT IN MY HOME.** 345-7698.

**BABYSITTER - NEAR MISHKAN TORAH (JCC)** - Some mornings & late afternoons. Call Mrs. Rhodes 773-7430 home, 341-3036 work.

**HOUSEWORK HELP:** Available part-time days. References and own transportation. 277-3556.

**FOR RENT (March 1 thru May 31)** Four bedroom, Split foyer; Boxwood, Immediate Occupancy. Phone 474-6313 after 6:00 p.m.

**YARD SALE** 13-E Hillside Rd. March 6 & 7. 10 a.m. to 4 p.m.

**EXPERIENCED SECRETARY** wishes to type at home. Reasonable Rates. Call 552-2677.

**CURTAINS: FIT UNIV. SQ. APTS.** \$35.00. Call 735-7879 after 6 p.m.

**FOR SALE BY OWNER: HONEYMOON COTTAGE - MASONRY** Centrally located. Completely Modernized. Air Conditioned. Fenced. Landscaped. Covered Patio. Immaculate Condition. Reasonable. Call 474-6745 after 6 p.m. and weekends.

**YARD SALE 3G Plateau Place.** March 6 & 7. 474-2722.

**FREE KITTENS, BLACK & WHITE MALE.** CALL 345-7435.

**FOR SALE: 1973 MG MIDGET** \$2000. Call 474-5806.

Spring has arrived at the **UNIVERSITY BOUTIQUE INTERNATIONAL!** Our racks are filled with lovely light-weight cotton blouses w/matching skirts, below-the-knee length dresses, new shirts, halters, scarves and shawls - all in fresh Spring colors. We also carry wide legged draw-string pants, new tops, capes and jackets in crinkle cotton with hand crocheted trimmings from Greece . . . and **DANSKIN** tank leotards. 7420 Baltimore Ave., College Park, open 11 a.m. - 6 p.m. daily.

**CAT LOST SINCE FEB 14.** All dark grey, short haired, ten year old neutered male. May still have red collar and Greenbelt Tag #63. Disappeared Lakeside Dr. Formerly lived Laurel Hill Rd. Greatly missed by old couple. 474-0803. Reward.

**ENGLISH BUNK BEDS, CONTEMPORARY STYLE, 32"x75"**, Foam Mattresses. Ideal for young children in small rom \$40.00. 474-0332.

**ANTIQUE GUN AUCTION:** Estate sale of antique guns, swords, replicas, decorator & military items. Sun., Mar. 14, 6 p.m., Holiday Inn, College Park, Md., Jet. Rt. 1 & I-495. Inspection 5-8. Terms Cash.

**SWIRLED CEILING** - choice of design. Call 474-5530 anytime.

**HUMIDIFIER** - Sears portable type. Like new condition \$35. delivered. 474-5530 anytime.

**VANITY w/sink 24"** excellent condition \$45. delivered Call 474-5530 anytime.

**PART-TIME TYPIST** for Greenbelt-Seabrook Law Office. Hours flexible. Excellent typing and accuracy, no shorthand. Lovely working conditions. Call 794-6900.

### INCOME TAX

Federal and all States

ALL RETURNS  
COMPUTERIZED

Preparation done in your home, if desired

TED PRITZKER

19-D Ridge Road

474-2864

### GREENBELT REALTY

151 Centerway  
Greenbelt, Maryland 20770  
474-8700

**GREENBELT: FOR QUICK SALE:** \$13,000.

2 Bedroom Frame Townhouse in very nice court. Included in low, low price - Washer, Dryer, Air Conditioners, & Carpeting in living room.

2 Bedroom End Frame Townhouse with Panelled living room, Washer, Air Conditioner. Home in very nice condition.

A Real Good Buy: 2 Bedroom Townhouse with many extras and covered patio - \$14,950.

3 Bedroom Masonry close to Shopping-Center for immediate possession - \$22,000.

3 Bedroom End Masonry with huge back yard, enclosed porch, and parking next to home. \$26,500.

3 Bedroom Brick Townhouse close to Center \$26,750.

Looking for a single standing home? Call us to help you find the home of your choice.

In Shopping Center  
\*Next to Mobil Gas Station\*

### PORTER'S LIQUORS

8200 Balto. Blvd. 474-3273  
(next to McDonald's in College Park)

We have the largest selection of Wines from around the world. Special prices on case purchases

Order Early

Any questions about wines welcomed

### Need Home Improvements?

Call John

Specializing in Ceramic Tile and Kitchen Floors, Sidewalks, Patios, Driveways, etc. Call anytime.

345-7497 or 552-1059.

## Will's Hardware

"The hardware store with Personalized Service"

SERVING THE GREENBELT AREA  
YOUR COMPLETE HARDWARE NEEDS

WHITE & YELLOW ONION SETS  
& VEGETABLE SEEDS HAVE ARRIVED

Windows & screens repaired Glass cut to size  
Pipe cut & threaded Key & Lock supplies  
Electric & Plumbing Supplies  
Glidden paint, sakrete products

Open weekdays 8-6:30, Saturday 8-6, Sunday 10-1

10502 Baltimore Blvd., Beltsville 937-4141

In Chestnut Hills Shopping Center

## Greenbelt Carry-out

PROTECT YOUR TABLE WITH A GOLDEN JOE LABEL

Sun. - Bonus Pizza Special

Hot Dogs . . 25c

Sat. - Royal Steak Sub .....85c

Hot Dogs . . 25c

Carton Drinks start at 99c

107 CENTERWAY

474-4998

## Grand Opening

SPECIAL Introductory Prices  
Our New Location

"Let the Beltway Put You In Orbit"

The Area's Largest and Most Complete AMC Service Dept.

'76 GREMLINS

Grand Opening Special  
\$50 Over Factory Invoice  
(First 25 Sold)

'76 MATADOR \$3717

258 engine, auto., p.s., AM radio, whitewalls  
Full price delivered  
(25 Matadors in Stock to choose from)

FREE

AMERICAN FLAG  
OR MOOD RING

With any Demonstration Ride. Licensed Drivers Only

Standing 100% behind the AMC Buyer Protection Plan

LOU TOLLISON'S

**ORBIT AMC/JEEP**

Beltway Exit 32W and Landover Rd.  
Directly across from entrance to Landover Mall

341-7300

### Kash, Inc. Realtors

"WE MAY CLOSE, BUT WE NEVER DOZE. CALL ANYTIME"

WE WOULDN'T "RIG A TONE" just to sell you this fine 2 BR 2 BATH CAC home with separate din. rm., family room, lge. kit. with all appliances, including washer and dryer. Many other features include a walk-in closet off master BR. \$300/mo. plus condo fee takes care of everything! \$33,900. Call 345-2151 anytime day or night.

ONE MEATBALL TO A CUSTOMER and this 2 BR END home is another "Real STEAL"! It has all Sears appliances including range, ref., washer, dryer plus it has new screens and a shed. Also, a Brick patio and - Pmts. of \$157.20/mo. after lgt. dwn. pmts. includes all utilities except elect. and phone. GRAB YOUR PHONE \$14000.!

### KASH'S HOME KOMMENTS

COME TO THE PARTY Open house at 32-R Ridge Rd. from 12 'til 5 Sunday. This fine buy is priced to sell right away! 2 BR home in one of the best courts in town that has washer, A/C and window fan. At the giveaway price of \$14,500. Pmts. of \$153/mo. includes all utilities except elect. and phone - after substantial dwn. pmt. Call 345-2151 for details. Don't forget \$14,500

THIS ONE IS "FENCED" but it's OK! A BIG END home with garage near the Greenbelt Library with 3 BR's and many fine appliances including washer, dryer, lge. 20,000 BTU A/C, W/W carpeting. Kitchen and bath are remodeled and the entire home is completely painted inside and ready to move into. Priced at below the appraisal \$28,500

THIS ONE IS STILL "WARM" AND is for sale - just listed, and it is really a fine home. Imagine, 3 BR 2 bath CAC brick home with washer, dryer, 2 refs all located on a large fenced lot. Rec. rm. in basement. Offered on all terms \$43,900

"THE DON" SAYS buy this fine 1 BR end apt. with din. area, washer, A/C, W/W carpet throughout plus many other features. Take over pmts. of \$124.25/mo. after lge. dwn. pmt. Just right for Mom or Dad or the newly-weds Priced to sell at \$11,800

"THE STING" of having to pay rent, with tax yet, when you could buy this 2 BR home with basement near Greenbelt and located on a large 60'x157' lot. Also, has a garage! Equipped with W/W carpet, and A/C. Would you believe this is offered on all terms at \$32,840?

ROBBED? There is no way you can be robbed on this beautiful home in Berwyn Heights! Here it is: 4 BR home with beautiful rec. room, new kit., new furnace and has a fireplace in LR. Also equipped with disposal, dishwasher, washer, dryer and of course CAC. Very nice Patio (would you believe 12' x 20')? Entire home is spotless! \$47,900

PARMA, JOHN, the meat balls were just too much for me. But, after seeing this 1 1/2 bath home in Carrolton, I just could not resist re"vealing" what it has to offer. It is a brick 1 1/2 bath rambler with CAC plus all of the fine appliances that you expect in a quality home. Offered on all terms for only \$48,000

FENCING WON'T "FOIL" you here if you want a fine 4 BR home in a decent neighborhood. See this best of best homes. It is neat and clean as a pin and ready for you to move into. In fact, if you have Veteran's preference and have the qualifying income you can move into this home for \$1,000 cash. Don't be late, this one will not last! call 345-2151 anytime day or night. Again, \$1000 and a qualifying income will move you in! \$38,000

A PHONE BOOTH will serve for you to call us on 345-2151 about this very well decorated 2 BR home with many features that have customized this home beyond belief. Paneled liv. rm., nice open kit, extra din. space, closets and equipped with fine appliances such as a F/F ref. 2 years old, washer 2 years old, and W/W carpet throughout! Woods in back! Quiet dead-end street! Appraised at \$16,600. Pmts. of 124/mo. after lge. dwn. pmt. includes all utilities except elect. and phone.

### KASH INC., REALTORS

Univ. Blvd. & Rhode Island Ave.

345-2151

LET KASH HELP YOU!

# Torch House Restaurant

6408 Kenilworth Ave., Riverdale 277-9520

60 oz. Pitcher Michelob Beer

Daily 10 a.m. - 9 p.m. . . . . only \$1.50

Try Our ALL-YOU-CAN-EAT Specials  
EVERY NIGHT 4-9 P.M.

Fish or Spaghetti . . . . . only \$1.89

Chicken . . . . . only \$2.49

Served with salad, potato or vegetable and Texas Toast

N. Y. Strip reg. \$3.00 now 20% off with this ad.

JOIN YOUR CREDIT UNION  
IT'S WHERE YOU BELONG  
AUTO FINANCING

\$ \$ \$  
**LOW CREDIT UNION RATES**

Amount of Loan	24 Months		36 Months	
	Monthly Payment	Total Interest	Monthly Payment	Total Interest
\$1,500	\$68.94	\$154.56	\$48.12	\$232.32
\$2,000	\$1.92	206.08	64.16	309.76
\$2,500	114.90	257.60	80.20	387.20
\$3,000	137.88	309.12	96.24	464.64

Monthly payments include principal and interest (.8 of 1% per month on the unpaid balance - 8.6% annual rate), plus life insurance for eligible borrowers at no additional cost.

## GREENBELT FEDERAL CREDIT UNION

121 Centerway (Shopping Center)  
Greenbelt, Md. 20770 Phone: 474-5906  
Hours: Daily: 9-3 Saturdays: 9-1  
Friday evening 7-9

COME IN AND GET YOUR FREE  
BICENTENNIAL APPOINTMENT CALENDAR

## REAL ESTATE OFFICE of GREENBELT HOMES, INC.

Hamilton Place  
off Ridge Road

OFFICE OPEN 7 DAYS A WEEK

Imm. occ. - 3 br. masonry home - completely redecorated interior, new stove & refrg., tiled bath/shower; addition on gardenside; near Center; \$23,500.00.

HONEYMOON COTTAGE - 1 br., living room, kitchen & bathroom all on one floor; extremely nice location; has fenced front & back yards; excellent con. throughout - Occ. by May 1st.

Two br. frame home - full-sized bathroom on first floor; remodeled kitchen with excellent appliances; tiled bathroom with shower on sec. floor; exterior recently painted - good location; parking in front of house.

Just reduced - 3 br. frame with large yard extending out to woods on gardenside; improvements - Selling for a low \$15,743.54.

Other 1, 2 & 3 br. brick & frame properties from which to choose - prices ranging from \$9,000 to \$32,000 - imm. to June occ.

FOR INFORMATION CALL SALES OFFICE OF YOUR CO-OP COMMUNITY. OUR SALES-PEOPLE WILL DISCUSS PRICES, HOUSING NEEDS, LOCATION AND ALL INFORMATION FOR BUYING IN G.H.I.

FOR INFORMATION CALL NOW . . .  
474-4161 474-4244 474-4881

Mary E. Dixon, Broker

## TWIN PINES SAVINGS AND LOAN ASSOCIATION

Further Official Notice

With reference to last week's official notice of Twin Pines' 19th Annual Meeting of the Members, HARVEY GELLER, nominated by petition, has been added to the list of nominees for the Board of Directors.

## GREENBELT TRANSMISSIONS

159 Centerway 474-1800

ALL MAJOR MOTOR WORK  
HONEST, RELIABLE WORK

ALL WORK FULLY GUARANTEED  
8-6 weekdays, 8-1 Sat. Open 'til 9 p.m. Thurs.

## Present This Coupon Seabrook Bakery & Deli

Natural - No Preservatives  
Added - We use all Vegetable  
Shortening ONLY

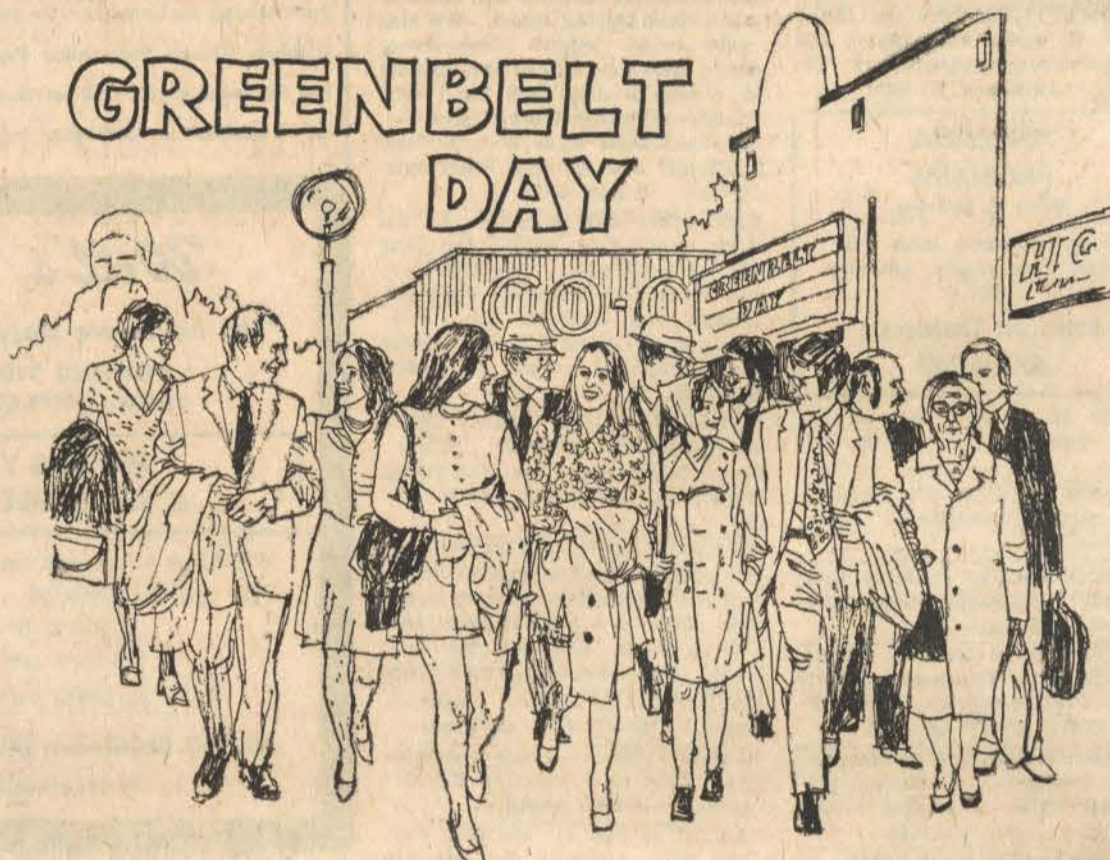
Come in and try our fresh,  
delicious pastries, pies and  
cookies. We'll give you a  
FREE cup of "hot" coffee  
to go with your purchase.

577-9854

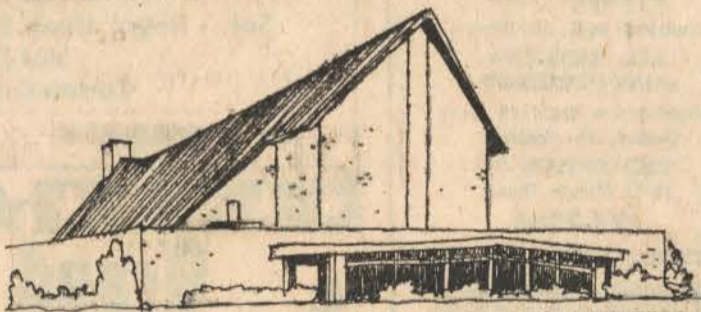
9434 Lanham-Severn Rd.  
Seabrook Shopping Center  
offer good FEB. & MAR. 1976

— Clip This Coupon —

# GREENBELT DAY



## AT HOLY CROSS LUTHERAN CHURCH SUNDAY MARCH 7



We've been a part of Greenbelt for many years now . . . but there are many of you that we've never had the pleasure of welcoming to our congregation.

So, in order to focus on one day, when more than the usual number of your neighbors will be there, we've picked Sunday, March 7, for two special services - especially to share our love for our Lord with you. We'd love to meet you there!

### These Greenbelt Neighbors invite you to join them in worship . . .

- |                        |                    |                      |                     |
|------------------------|--------------------|----------------------|---------------------|
| Sharyn Alexander       | Ann Fitzenreiter   | Dorothea Leslie      | Ethel Nieman        |
| James Apel             | William Garrea     | Jill Leslie          | Lee Olszar          |
| Patricia Apel          | Daniel Garrea      | Anthony McDonnell    | Thomas Payne        |
| Dorothy Baum           | Nancy Garrea       | Carole McDonnell     | Lynne Payne         |
| Darwin Beck            | Donald Gerdes      | Ted Reich            | Peggy Pyle          |
| Sharron Beck           | Rachel Gerdes      | Thomas Reich         | Katherine Reynolds  |
| Heidi Beck             | Erik Gerdes        | Ed Meier             | John Riley          |
| Heather Beck           | Carole Gover       | Ruth Meier           | Doris Riley         |
| Kelli Beck             | Diane Griffith     | Eddie Meier          | James Rishel        |
| Parker Beck            | Wayne Young        | Gudrun Mills         | Willie Ross         |
| Nancy Birner           | Mary Young         | Monica Mills         | Elaine Ross         |
| Pastor Birner          | Lydia Goldstein    | Regina Mills         | Sonja Ross          |
| Andrew Birner          | Susan Goldstein    | Larry Monke          | William Ross        |
| Paul Birner            | Alan Goldstein     | Ann Falkenheim Monke | Patricia Savage     |
| Janathon Birner        | Ronald Graunke     | Durrell Moore        | Robert Savage       |
| Joel Birner            | Cynthia Graunke    | Betty Moore          | Regina Sappe        |
| Allen Buzzell          | Heidi Graunke      | Leslie Moore         | Richard Schneider   |
| Raymond Carriere       | Lorene Hanna       | Timothy Moore        | Christine Schneider |
| Lael Carriere          | Sarah Hanna        | Pamela Moore         | Deborah Schneider   |
| Maralyn Chaples        | Clifford Hanna     | Ricky Young          | Stephen Schneider   |
| Karin Chaples          | Maria Hanna        | Bobby Young          | Kay Sawyer          |
| Ruby Conrad            | Lloyd Hanna        | Gloria Moorehead     | Randy Sawyer        |
| Mary Dacey             | Bonnie Hayes       | William Morin        | Leonard Slyter      |
| Shirley Davis          | Brent Hayes        | Peggy Morin          | Dolores Slyter      |
| Linda Davis            | Martin Holly       | Andy Morin           | Susan Slyter        |
| Helen DeFay            | Florence Holly     | Sharon Morin         | Sandra Slyter       |
| Susan Denvir           | Dennese Hoppel     | Julia Morin          | Carlton Tatum       |
| Donald Erdmann         | Patricia Kurburski | Marilyn Nagle        | Joan Tatum          |
| Lois Erdmann           | Dawn Kurburski     | Douglas Nagle        | Catherine Tatum     |
| Mary Jane Felsentreger | Laura Kurburski    | Donna Nagle          | Dolly Tome          |
| Richard Fitzenreiter   | Elsie Holtzclaw    | Karen Nagle          | Joanne Volk         |
| Patricia Fitzenreiter  | Mabel Isenberg     | Kerry Nagle          | Edgar Weber         |
| Craig Fitzenreiter     | Debbie Miller      | Sheila Nagle         | Vera Weber          |
| Scott Fitzenreiter     | Mike King          | Lorene Newman        | Lowell Willock      |

Holy Cross Lutheran Church 6905 Greenbelt Rd.  
Greenbelt, Md.  
CHURCH SERVICES AT 8:30 and 11:15 a.m. • SUNDAY SCHOOL AT 9:45 a.m.